

Plans and SSM's placed under Survey Practice Regulations 12 and 55B are required to have a Locality Sketch Plan lodged with the Deposited Plan at The Land Titles Office.  
**D.P.** .....



**PM 46715**  
**SSM**

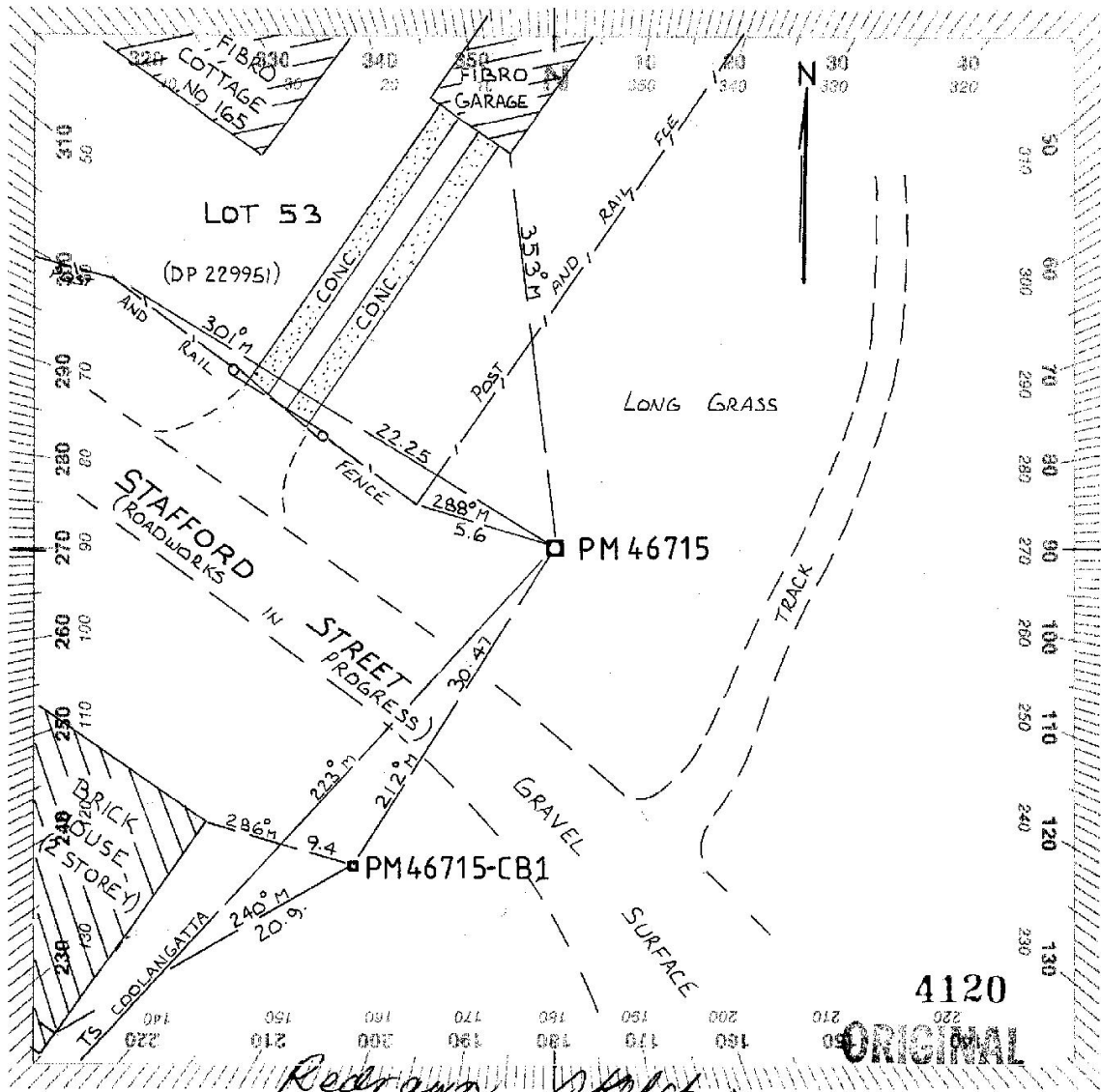
Description .....

**LOCALITY SKETCH PLAN**

Parish BROUGHTON County CAMDEN Town/Suburb/Locality GERROA  
 Municipality or Shire KIAMA C.M.A. Map Sheet GERRINGONG WB247-4

Measurements are in metres

Zone ...../.....



Organization placing Marks LANDS DEPT. NOWRA.

I certify that the Mark or Marks have been placed and numbered as detailed hereon.

Ref. ....

The Surveyor General is to be notified of ISG/AMG Co-Ordinates and/or AHD Levels determined by survey for mark placed.

**PM 46715**  
**SSM**

D. WOLFF  
 Mark placed 14 / 7 / 1978  
 (NEW SKETCH 13.10.88.  
G. MURRAY)

Replaces PM .....  
 SSM .....



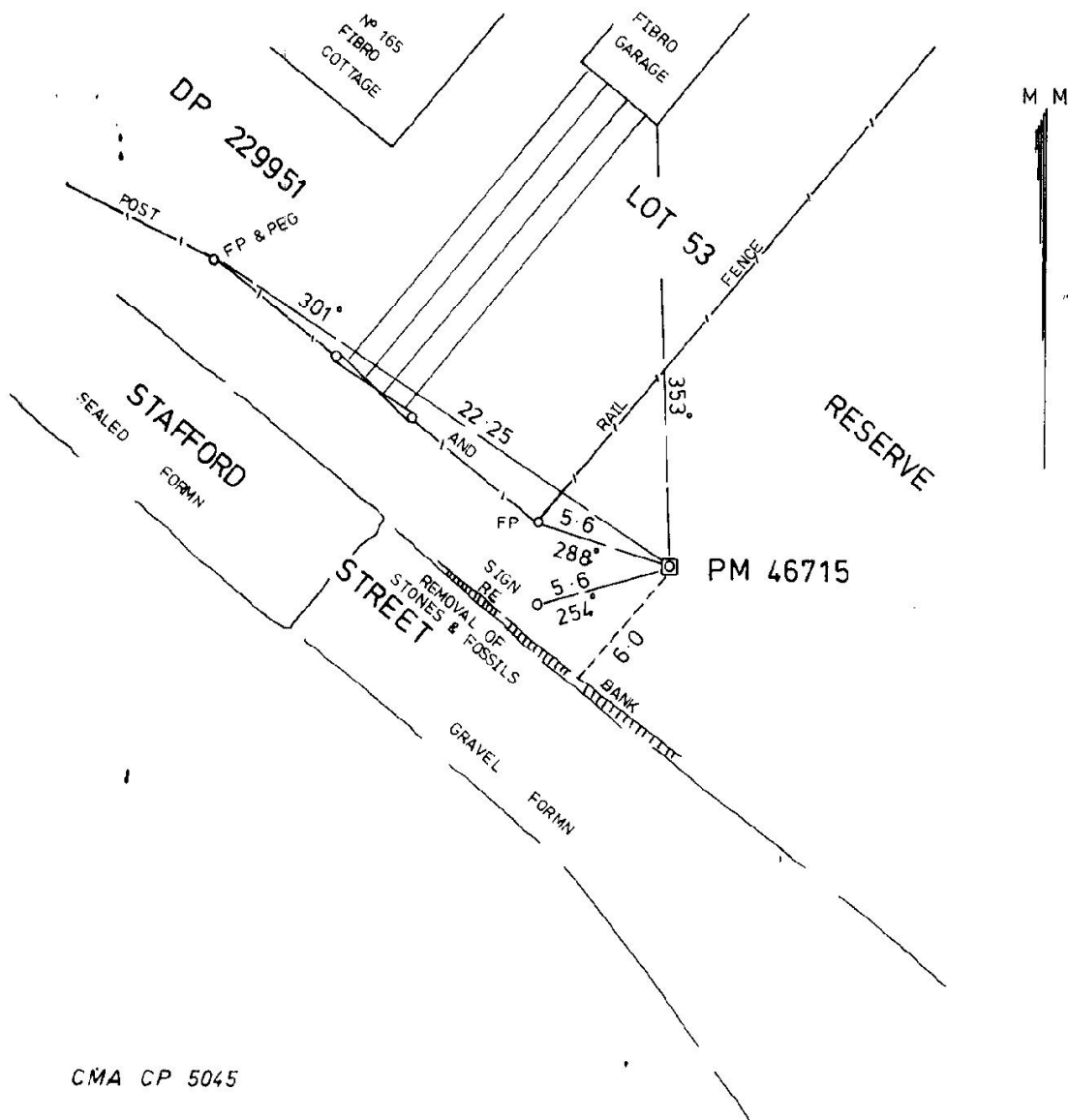
PM 46715  
 SSM  
 MsM

**LOCALITY SKETCH PLAN**

Parish ... BROUGHTON ... County ... CAMDEN ... City or Town ... GERRONG ...  
 Municipality or Shire ... KIAMA ... Control Survey Plan ... GERRINGONG W 8247 A

Measurements are in metres

Zone ... 56 ... / 1 ...



CMA CP 5045

2749

Organization placing Marks

DEPARTMENT OF LANDS

Aerial photo No. .... Run .....  
 Plan registered / / 19  
 Mark last inspected / / 19

36391 8.77 D. West, Government Printer

106 ORIGINAL  
 PM 46715  
 SSM  
 MsM

I certify that the Mark or Marks have been placed and numbered as detailed hereon.

*David H Wolff*  
 David H Wolff B Surv  
 Staff Surveyor

Designation  
 14. 7. 1978