

7-4-88

CENTRAL MAPPING AUTHORITY  
Department of Lands  
Trigonometrical Survey of N.S.W.  
RECONNAISSANCE and MAINTENANCE REPORT

STATION BINGILLY G.S. 7165

Co: BURVETT Ph: GRAVENSED

Map Sheet: IMIRELL 1:250,000 No:

Inspected by: D. KAIN Date: 2nd November 1976

Authority: Central Mapping Authority Field Book: 1409

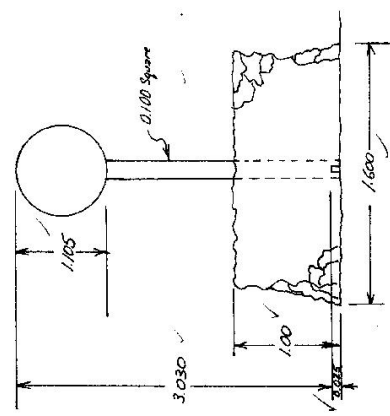
Beacon Diagram Net to Scale

This Trig. Station has been:- Note: Cross out word or words which do not apply

1. Completely cleared to permit 360° vision to surrounding Trigs. ✓
2. Cleared by lanes bearing ..... from Trig. Mast
3. Trig. Mast & Vanes have been painted white & black respectively ✓
4. The Trig. was ~~erected~~ <sup>placed</sup> ~~not unplaced~~, dimensions now being: Steel Plug (P.L.) should be explicit, e.g. Steel plug, Brass plug, Bolt, G.I. Pipe

Description of mark: Steel Plug (P.L.)  
 Height of mark: 0.025 m <sup>above</sup> ~~below~~ level/concrete G.L.  
 Height of Top Vanes to Top Mark: 3.030 m  
 Height of Cairn: 1.00 m. Diameter of Cairn: 1.600 m.  
 Diameter of Vanes (vertical): 1.105 m.

5. A. Steel Plug set in conc./soil has been placed 3.139 m. bearing 221°M from Trig. Mast
6. A. Steel Plug set in conc./soil has been placed 3.575 m. bearing 330°M from Trig. Mast
7. A. set in conc./soil has been placed ..... m. bearing .....°M from Trig. Mast
8. A. set in conc./rock has been placed ..... m. bearing .....°M from Trig. Mast
9. Connection Steel Plug to G.I. Pipe ..... m. bearing 6°M
10. Connection ..... to ..... m. bearing .....°M
11. Connection ..... to ..... m. bearing .....°M
12. Connection ..... to ..... m. bearing .....°M
13. Diff. Ht. Concrete Mast in Conc. is 0.056 m. <sup>above</sup> ~~below~~ Steel Plug
14. Diff. Ht. G.I. Pipe in Conc. is 0.112 m. <sup>above</sup> ~~below~~ Steel Plug
15. Diff. Ht. .... is. .... m. <sup>above</sup> ~~below~~ .....
16. Diff. Ht. .... is. .... m. <sup>above</sup> ~~below~~ .....



Date: 2/11/76 New Station Record of Station

Prepared by: M.L. Morrison 29/12/76 Checked: ..... Noted on U.T.M. Card

STATION **BINIGUY G.S. 7165**

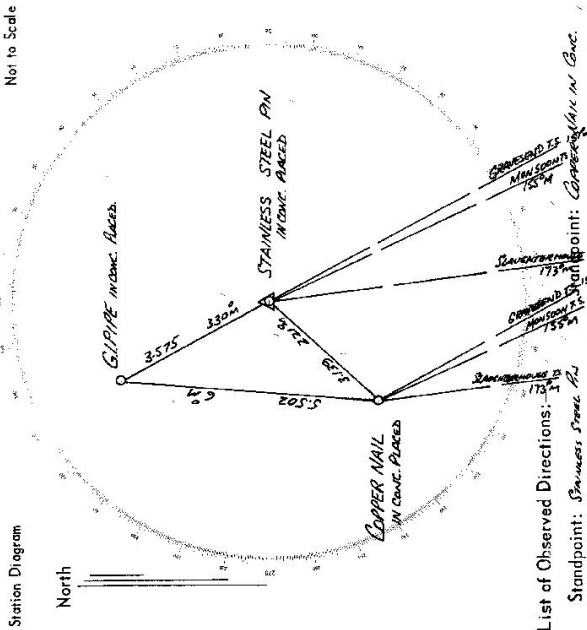
Owners Name..... Current Occupant.....

Address..... Address.....

Access **2-11-1976**

- | MILES | DIRECTION   |
|-------|---|
| 0.00  | MARÉE RD. TRAVEL NW SWINDER HWY TOWARDS MARALDA - INVERELL  |
| 0.80  | CROSS OVER RAILWAY LINE   |
| 21.60 | CROSS OVER RAILWAY LINE AT 'VAGOBIE'  |
| 30.50 | CROSS ROAD BRIDGE OVER 'SPRING CREEK'   |
| 31.80 | TAKE GRAVEL TRACK OFF TO YOUR LEFT THENCE ACROSS 'MARÉE-INVERELL' RAILWAY LINE. FOLLOW TRACK, FENCE ON YOUR LEFT. |
| 32.10 | TAKE GRAVEL TRACK OFF TO YOUR RIGHT   |
| 32.30 | THROUGH IRON GATE, FOLLOW TRACK.  |
| 32.40 | TAKE LEFT FORK IN TRACKS. FOLLOW TRACK UP RIDGE   |
| 32.90 | LEAVE VEHICLE AT END OF TRACK   |
- WALKING ACCESS IS GAINED BY WALKING AROUND WESTERN EDGE OF GRAVESEND G.S. IN A NORTHWELY DIRECTION INTO SADDLE THENCE UP TO BINIGUY G.S.  
WALKING TIME IS ABOUT 10 MINS. EASY WALK WITH LIGHT LOAD.

Not to Scale



List of Observed Directions: -

| Station                      | Direction    | Station                      | Direction    |
|------------------------------|--------------|------------------------------|--------------|
| MONSIEUR TS.                 | 0° 00' 00"   | MONSIEUR TS.                 | 0° 00' 00"   |
| STAINLESS STEEL PIN IN CONC. | 17° 53' 55"  | STAINLESS STEEL PIN IN CONC. | 17° 53' 55"  |
| COPPER NAIL IN CONC.         | 66° 47' 35"  | GIPIPE IN CONC.              | 209° 01' 15" |
| GIPIPE IN CONC.              | 176° 27' 55" | STAINLESS STEEL PIN IN CONC. | 246° 47' 05" |
| GRAVESEND G.S.               | 356° 58' 30" | GRAVESEND G.S.               | 356° 58' 30" |

| Station                      | Direction    | Station | Direction |
|------------------------------|--------------|---------|-----------|
| MONSIEUR TS.                 | 0° 00' 00"   |         |           |
| STAINLESS STEEL PIN IN CONC. | 17° 53' 55"  |         |           |
| COPPER NAIL IN CONC.         | 29° 01' 15"  |         |           |
| STAINLESS STEEL PIN IN CONC. | 356° 29' 05" |         |           |
| GRAVESEND G.S.               | 356° 58' 30" |         |           |

CENTRAL MAPPING AUTHORITY

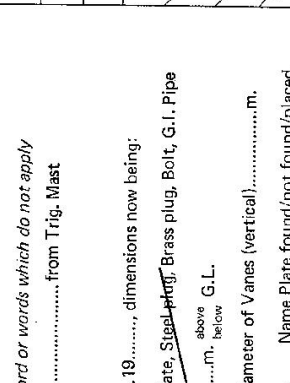
GEODETTIC SURVEY OF N.S.W.

GEODETTIC STATION RECONNAISSANCE and MAINTENANCE REPORT

Description:

1. Cleared by lanes bearing.....
2. Mast & Vanes have been ~~pointed~~ white & black respectively.
3. The station/pillar was unpiled/not unpiled/constructed on..... 19....., dimensions now being: Description of mark..... should be explicit, e.g., S/Steel Pillar Plate, Steel Plug, Brass plug, Bolt, G.I. Pipe  
Height of mark..... m. <sup>above</sup> rock/concrete, ~~Mark is~~ <sup>above</sup> G.L.  
Height of Top Vanes to Top Mark/Pillar Plate..... m. Diameter of Vanes (vertical)..... m.  
Height of Cairn..... m. Diameter of Cairn..... m. Name Plate found/not found/placed.  
Length of Mast..... m. (approximate if not unpiled)
4. A. G.I. PIPE..... set in conc/rock has been ~~placed~~/found, bearing..... ~~61M~~ from Mast/Plug/Pillar
5. A. CB NAIL..... set in conc/rock has been ~~placed~~/found, bearing..... ~~51M~~ from Mast/Plug/Pillar
6. A..... set in conc/rock has been placed/found, bearing..... °M from Mast/Plug/Pillar
7. A..... set in conc/rock has been placed/found, bearing..... °M from Mast/Plug/Pillar
8. Action required: SEE REVIEW OF ENVIRONMENTAL FACTORS 55/11/951

STATION: BUNIGUY No.: 5857  
 MAP SHEET SCALE 1:250 000  
 INSPECTED BY: G. JONES DATE: 5.7.82  
 AUTHORITY: CMA FIELD BOOK: 2008

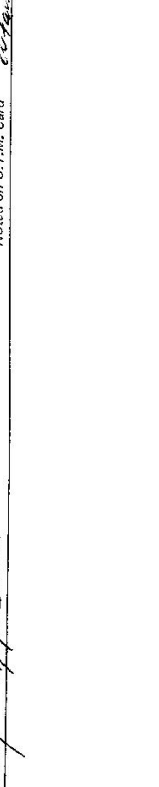


STANDPOINT:

| Mark | Direction | Horiz. Distance | Height Difference | Mark | Direction | Horiz. Distance | Height Difference |
|------|-----------|-----------------|-------------------|------|-----------|-----------------|-------------------|
|      |           |                 | above standpt.    |      |           |                 | above standpt.    |
|      |           |                 | below standpt.    |      |           |                 | below standpt.    |
|      |           |                 | above standpt.    |      |           |                 | above standpt.    |
|      |           |                 | below standpt.    |      |           |                 | below standpt.    |
|      |           |                 | above standpt.    |      |           |                 | above standpt.    |
|      |           |                 | below standpt.    |      |           |                 | below standpt.    |
|      |           |                 | above standpt.    |      |           |                 | above standpt.    |
|      |           |                 | below standpt.    |      |           |                 | below standpt.    |
|      |           |                 | above standpt.    |      |           |                 | above standpt.    |
|      |           |                 | below standpt.    |      |           |                 | below standpt.    |

Prepared by: G. J. Jones 19/8/82 Checked: G. J. Jones 22/11/84  
 Noted on U.T.M. Card

7165  
 No.: 5857  
 DATE: 5.7.82  
 FIELD BOOK: 2008



Prepared by: G. J. Jones 19/8/82 Checked: G. J. Jones 22/11/84  
 Noted on U.T.M. Card



CENTRAL MAPPING AUTHORITY

GEODETTIC SURVEY OF N.S.W.

GEODETTIC STATION RECONNAISSANCE and MAINTENANCE REPORT

STATION: *BUNIGUY G.S. (A)* No.: **7165**

MAP SHEETS SCALE 1:250 000 SCALE 1:100 000

INSPECTED BY: *P. Batts* DATE: *30.3.88*

AUTHORITY: *C.M.A.* FIELD BOOK: *C 382*

Description:  
 1. Cleared by lanes bearing..... *360°M*..... from Trig. Mast  
 Note: Cross cut word or words which do not apply

2. Mast & Vanes have been painted white & black respectively. ✓  
 3. The station/pillar was ~~erected~~ *reconstructed* on *28x198x198s*, dimensions now being:

Description of mark *36 Pole in Conc (U)* should be explicit, e.g., S/Steel Pillar Plate, Steel plug, Brass plug, Bolt, G.I. Pipe  
 Height of mark *1.370* m. above ~~rock~~ *rock/concrete*; / Mark is *1.520* m. above G.L.

Height of Top Vanes to Top Mark/Pillar plate *1.435* m. Diameter of Vanes (vertical) *0.750* m.  
 Height of Cairn..... m. Diameter of Cairn..... m. Name Plate found/not found/placed.

Length of Mast..... m. (approximate if not unspiled)

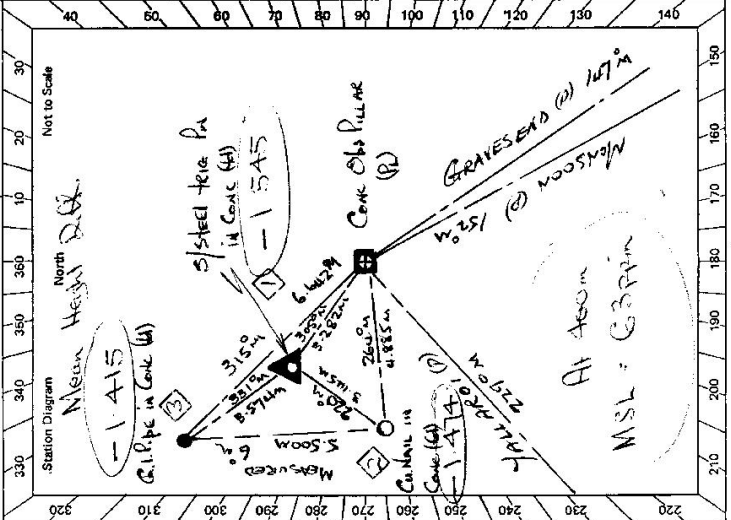
4. *1/2 S. TRIG. PL* set in conc/~~rock~~ has been ~~placed~~ *found*, bearing *305* °M from ~~Rock/Plug/Pillar~~

5. *G.I. PIPE* set in conc/~~rock~~ has been ~~placed~~ *found*, bearing *315* °M from ~~Mast/Plug/Pillar~~

6. *COPPER NAIL* set in conc/~~rock~~ has been ~~placed~~ *found*, bearing *264* °M from ~~Mast/Plug/Pillar~~

7. *A* set in conc/~~rock~~ has been placed/~~found~~, bearing..... °M from Mast/Plug/Pillar

8. Action required:.....  
 STANDPOINT: *1/2 STEEL PILLAR PLATE*



| Mark                      | Direction        | Horiz. Distance | Height Difference           | Mark                          | Direction        | Horiz. Distance | Height Difference           |
|---------------------------|------------------|-----------------|-----------------------------|-------------------------------|------------------|-----------------|-----------------------------|
| <i>M. SPOON (P)</i>       | <i>0 00 00</i>   |                 | above standpt.              | <i>M. SPOON (P)</i>           | <i>0 00 00</i>   |                 | above standpt.              |
| <i>YALLAROI (P)</i>       | <i>73 58 30</i>  |                 | above standpt.              | <i>C.I. NAIL</i>              | <i>66 46 26</i>  | <i>3.445</i>    | <i>0.071</i> below standpt. |
| <i>C.I. NAIL</i>          | <i>68 13 30</i>  | <i>4.895</i>    | <i>7.475</i> below standpt. | <i>YALLAROI (P)</i>           | <i>73 57 50</i>  |                 | above standpt.              |
| <i>1/2 STEEL TRIG. PL</i> | <i>147 43 00</i> | <i>3.982</i>    | <i>7.546</i> below standpt. | <i>G.I. PIPE</i>              | <i>176 34 30</i> | <i>3.574</i>    | <i>0.130</i> below standpt. |
| <i>G.I. PIPE</i>          | <i>162 46 15</i> | <i>6.642</i>    | <i>1.445</i> below standpt. | <i>1/2 STEEL PILLAR PLATE</i> | <i>327 45 00</i> | <i>3.282</i>    | <i>1.543</i> below standpt. |
| <i>GRAVES END (P)</i>     | <i>357 12 10</i> |                 | above standpt.              | <i>GRAVES END (P)</i>         | <i>357 01 20</i> |                 | above standpt.              |



Prepared by: *P. Batts* 30.3.88  
 Checked: *[Signature]*  
 Noted on U.T.M. Card *[Signature]*

Checked: *[Signature]*

GS 24

|   |  |
|---|--|
| STATION <u>BiniGuy ES(P)</u> 7165   | Owner's Name: <u>D. RUINN</u><br>Address: <u>GRAVESEND</u><br>Phone: <u>GRAVESEND RD</u><br>Current Occupant: <u>T.R. 23252</u><br>Address: <u>GRAVE LEASE 1944S</u><br>Phone: <u>PAVE OF D. RUINN</u>   |
| Not to Scale<br>  | ACCESS<br>Access Report of 20/1/1988 was found suitable/unsuitable.<br>FEATURE<br>841 RD GRAVESEND TRAIL TOWARDS MOORE<br>000 TURN RIGHT AND GRAVEL ROAD<br>665 CROSS RAILWAY LINE<br>705 DOUBLE IRON GATES<br>746 CAUSEWAY<br>752 TURN RIGHT ONTO TRACK - TRACK HEADS THE DIRECTION IN WHICH<br>765 YOU HAVE JUST CAME<br>792 WIRE GATE FOLLOW TRACK AROUND FENCE LINE<br>1039 TURN RIGHT THROUGH DOUBLE WIRE GATES, FOLLOW MARKED TRACK TO TRIG<br>1127 MAY REQUIRE MENCH IN THIS SECTION - LOOSE STONE<br>1138 BINI GUY ES(P) |
| This section to be completed by officer constructing pillar.<br>Original station mark found/ <del>not found</del> .<br>Description of mark: <u>STEEL TRIG PA</u><br>Original beacon found/ <del>not found</del> .<br>Description of beacon: <u>CALC PILE &amp; DISC</u><br>Height Top of Vanes to Top Mark: <u>2.930</u> m.<br>Height of mark: <u>0.25</u> m. above <del>below</del> track/cont. above G.L.<br>Diameter of Vanes: <u>1.015</u> m. Height of Cairn: <u>0.930</u> m.<br>Original Beacon has/ <del>has not</del> been destroyed by me. | Date<br>Record of Station  |