

74.38

Department of Lands

Integration Survey of N.S.W.

RECONNAISSANCE and MAINTENANCE REPORT

This Trig. Station has been:

Note: Cross out word or words which do not apply

1. ~~Completely cleared to permit 360° vision to surrounding Trig.~~
2. Cleared by James bearing ~~Antipex 2400M to 335M~~ to 335M from Trig. ~~West~~
3. Trig. Mast & Vane have been painted white & black respectively. D.V.S. (V.C.H.I.D)
4. The Trig. ~~was applied not supplied dimensions now being~~ <sup>Backwards</sup> ~~was applied not supplied dimensions now being~~

Description of mark DEW HOLE IN CONCRETE <sup>Backwards</sup> ~~DEW HOLE IN CONCRETE~~ should be explicit, e.g. Steel plug, Brass plug, Bolt, G.I. Pipe

Height of mark..... m <sup>above</sup> ~~below~~ concrete ..... m <sup>above</sup> ~~below~~ G.L.  
 Height of Top Vane to Top Mark..... m <sup>Diameter of Vane (vertical)</sup>

Height of Cairn..... m <sup>Diameter of Cairn</sup>..... m.

Length of Mast..... m <sup>(approximate if not supplied)</sup>

5. A. SSM set in ~~conc/rock~~ has been placed. 2.514 m. bearing 226° from Trig. ~~West~~
6. A. BM Bolt set in ~~conc/rock~~ has been placed. 3.735 m. bearing 301° from Trig. ~~West~~
7. A. G.I. Pipe set in ~~conc/rock~~ has been placed. 48.293 m. bearing 56.9° from Trig. ~~West~~
8. A. set in ~~conc/rock~~ has been placed..... m. bearing.....°M from Trig. ~~West~~

9. Connection: SSM to BM Bolt : 4.302 m. bearing.....°M
10. Connection: G.I.P to Tower (L) 15.125 m. bearing.....°M

11. Connection..... to..... m. bearing.....°M
12. Connection..... to..... m. bearing.....°M
13. Diff. Hr. SSM is 0.47 m. ~~above~~ <sup>below</sup> BM Bolt (100)
14. Diff. Hr. BM Bolt is 0.44 m. ~~above~~ <sup>below</sup> DEW HOLE (100)
15. Diff. Hr. .... is .. m. ~~above~~ <sup>below</sup> ..
16. Diff. Hr. .... is .. m. ~~above~~ <sup>below</sup> ..

Prepared by: L. HAYES

Checked: A. Buffly

Noted on U.I.M. Card

STATION GIBRALTARE 2479 TS 7068

Co: CAMDEN Ph: MITTAGONG

Map Sheet: BURRAGOONG 1:100,000 No: 8923

Inspected by: L. HAYES Date: 9/1/74

Authority: DEPT OF LANDS Field Book: OS 1153

Beacon Diagram Not to Scale

NO EVIDENCE OF TRIG BEACON

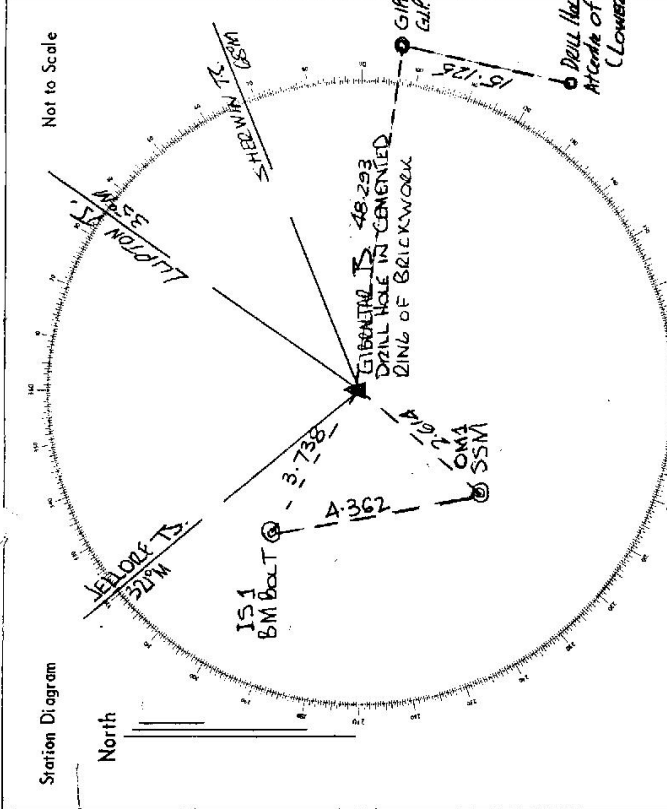
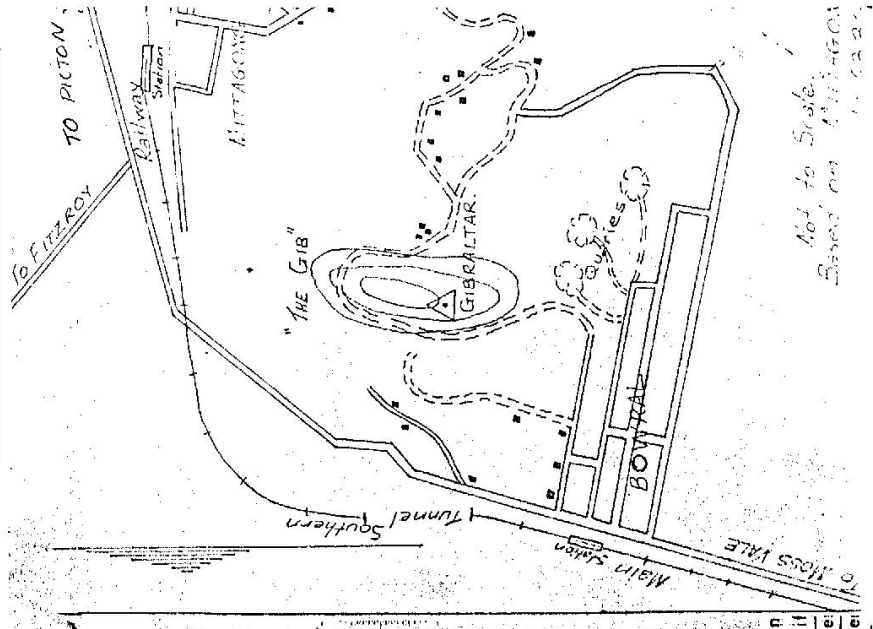
Date	Record of Station

Checked

STATION **GIBRALTAR T.S. 7068**

Current Occupant.....  
Address.....

Owners Name.....  
Address.....  
Access **9/9/1974**  
**SEE MITTAGONG 1:63,360**



List of Observed Directions:-

Standpoint: DRILL HOLE (TRIP)		Standpoint: DRILL HOLE (TRIP)	
Station	Direction	Station	Direction
JALLORE T.S.	389° 55' 60"	JALLORE T.S.	389° 55' 60"
LIFTON T.S.	75° 06' 30"	SSM	211° 35' 28"
SHERWIN T.S.	83° 25' 00"	BM BOLT	359° 25' 02"
		G.I.P. PLACED	127° 28' 44"
SSM		G.I.P. PLACED	
Station	Direction	Station	Direction
DRILL HOLE (GRANDTOWER)	389° 55' 60"	DRILL HOLE (Center Tower)	88° 06' 30"
BM BOLT	302° 24' 18"	DRILL HOLE (Cathedral T.S.)	180° 04' 01"

CENTRAL MAPPING AUTHORITY  
Department of Lands

Trigonometrical Survey of N.S.W.

RECONNAISSANCE and MAINTENANCE REPORT

STATION **GABRIELTAR**

TS-7068

This Trig. Station has been:-

Note: Cross out word or words which do not apply

1. Completely cleared to permit 360° vision to surrounding Trig.

2. Cleared by lanes bearing ..... from Trig. Mast

3. Trig. Mast & Vanes have been painted white & black respectively.

4. The Trig. was unpiled/not unpiled, dimensions now being: ~~.....~~

Description of mark ~~.....~~ should be explicit, e.g. Steel plug, Brass plug, Bolt, G.I. Pipe

Height of mark ..... m above rock/concrete ..... m below G.L.

Height of Top Vanes to Top Mark ..... m. Diameter of Vanes (vertical) ..... m.

Height of Cairn ..... m. Diameter of Cairn ..... m.

Length of Mast ..... m. (approximate if not unpiled)

5. A ~~SSM~~ set in conc/rock has been ~~placed~~ <sup>Found</sup> ~~2.613~~ m. bearing ~~208~~ <sup>208</sup> °M from Trig. ~~Mast~~ <sup>Mast</sup>

6. A ~~SSM~~ set in conc/soil has been ~~placed~~ <sup>Found</sup> ~~3.740~~ m. bearing ~~297~~ <sup>297</sup> °M from Trig. ~~Mast~~ <sup>Mast</sup>

7. A ~~Drill Hole~~ set in conc/soil has been placed. ~~6.354~~ m. bearing ~~129~~ <sup>129</sup> °M from Trig. ~~Mast~~ <sup>Mast</sup>

8. A ..... set in conc/rock has been placed ..... m. bearing ..... °M from Trig. Mast

9. Connection ~~to~~ <sup>Drill Hole to SSM</sup> ..... m. bearing ~~285~~ <sup>285</sup> °M

10. Connection ~~to~~ <sup>to Mast</sup> ..... m. bearing ~~303~~ <sup>303</sup> °M

11. Connection ..... to ..... m. bearing ..... °M

12. Connection ..... to ..... m. bearing ..... °M

13. Diff. Ht. ~~Drill Hole~~ <sup>Drill Hole</sup> is ~~0.525~~ m. above ~~Drill Hole~~ <sup>Drill Hole</sup> (Found) (Found) (Found)

14. Diff. Ht. " is ~~0.227~~ m. above ~~SSM~~ <sup>SSM</sup> in Rock. ~~Bolt in Rock~~ <sup>Bolt in Rock</sup> is ~~0.250~~ m. above ~~Drill Hole~~ <sup>Drill Hole</sup> (Found) (Found) (Found)

15. Diff. Ht. " is ~~0.250~~ m. above ~~SSM~~ <sup>SSM</sup> in Rock. ~~Bolt in Rock~~ <sup>Bolt in Rock</sup> is ~~0.459~~ m. above ~~Drill Hole~~ <sup>Drill Hole</sup> (Found) (Found) (Found)

16. Diff. Ht. ~~SSM~~ <sup>SSM</sup> in Rock is ~~0.459~~ m. above ~~Drill Hole~~ <sup>Drill Hole</sup> (Found) (Found) (Found)

Prepared by: *[Signature]*

Checked: *[Signature]*

Noted on U.T.M. Card

Co: **CADEN**

Map Sheet: **BURRAGOONG SOUTH**

Inspected by: **M. Macdonald**

Authority

Ph: **MITTAGONG**

No: **8929-5**

Date: **20<sup>th</sup> OCTOBER 1976**

Field Book: **37**

Beacon Diagram

Not to Scale

Date

Record of Station

Checked

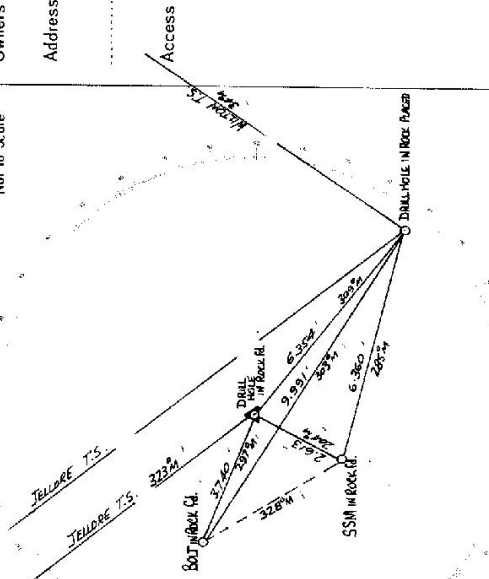
STATION GIBALTAR TS-7068

Owners Name: .....  
 Current Occupant: .....  
 Address: .....  
 Address: .....

Not to Scale

Station Diagram

North



List of Observed Directions:-

Standpoint: DRILL HOLE IN ROCK FACE		Standpoint: DRILL HOLE IN ROCK FACE	
Station	Direction	Station	Direction
TELLORE T.S.	166.75	TELLORE T.S.	289.23
DRILL HOLE IN ROCK CL.	328.75	DRILL HOLE IN ROCK CL.	289.23
SSM IN ROCK CL.	329.27	SSM IN ROCK CL.	289.23
BOT IN ROCK	329.27	BOT IN ROCK	289.23
DRILL HOLE IN ROCK (TRIAL MARK)	329.27	DRILL HOLE IN ROCK (TRIAL MARK)	289.23
TELLORE T.S.	329.27	TELLORE T.S.	289.23

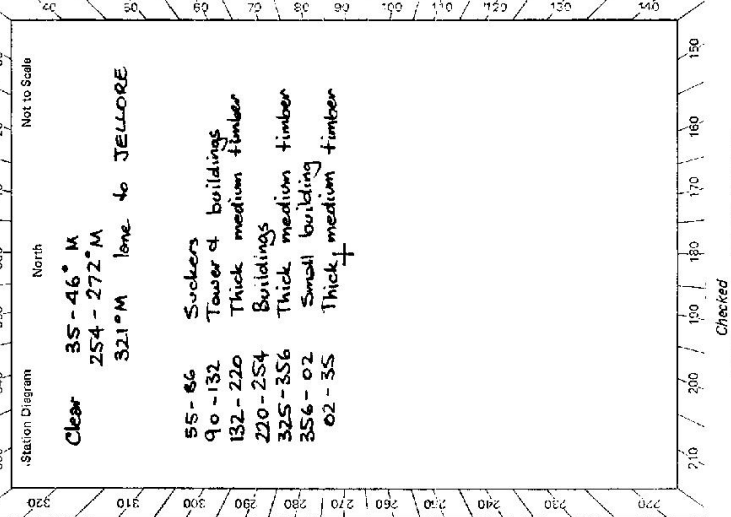
TS 7068  
No. 2110

STATION: GIBALTAR  
MAP SHEET  
SCALE 1:250 000

INSPECTED BY: Wollongong  
A. Sivertsen

DATE: 15-1-79  
FIELD BOOK: 1723

AUTHORITY: CMA



CENTRAL MAPPING AUTHORITY  
GEODETTIC SURVEY OF M.S.D.  
GEODETTIC STATION RECONNAISSANCE and MAIN FINANCE REPORT

Description:  
1. Cleared by vanes bearing..... See → Note: Cross out word or words which do not apply from Trig. Mast

2. Mast & Vanes have been painted white & black respectively.  
3. The station/pillar was unpiled/not unpiled/constructed on..... 19....., dimensions now being:

Description of mark..... should be explicit, e.g., S/Steel Pillar Plate, Steel plug, Brass plug, Bolt, G.I. Pipe  
Height of mark..... m. <sup>above</sup> <sub>below</sub> rock/concrete; Mark is..... m. <sup>above</sup> <sub>below</sub> G.L.  
Height of Top Vanes to Top Mark/Pillar plate..... m. Diameter of Vanes (vertical)..... m.  
Height of Cairn..... m. Diameter of Cairn..... m. Name Plate found/not found/raised.  
Length of Mast..... m. (approximate if not unpiled)

4. A..... set in conc/rock has been placed/found, bearing..... °M from Mast/Plug/Pillar  
5. A..... set in conc/rock has been placed/found, bearing..... °M from Mast/Plug/Pillar  
6. A..... set in conc/rock has been placed/found, bearing..... °M from Mast/Plug/Pillar  
7. A..... set in conc/rock has been placed/found, bearing..... °M from Mast/Plug/Pillar

8. Action required:..... MITTAGONG  
1:25,000

Mark	Direction	Horiz. Distance	Height Difference	Mark	Direction	Horiz. Distance	Height Difference
			above standpt.				above standpt.
			below				below
			above standpt.				above standpt.
			below				below
			above standpt.				above standpt.
			below				below
			above standpt.				above standpt.
			below				below
			above standpt.				above standpt.
			below				below
			above standpt.				above standpt.
			below				below

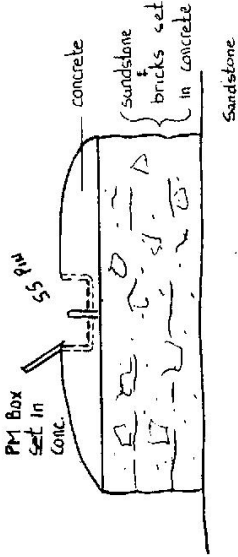
Prepared by: [Signature] Checked: [Signature] Noted on U.T.M. Chart

75-103

7068 **GIBALTAR**  
STATION TS 2479

Co: CAMDEN Ph: MITTAGONG  
Map Sheet: 8289 II.S No: MITTAGONG  
Inspected by: L. Trefarrow Date: 31/1/79  
Authority DEPT LANDS Field Book: 1119

Beacon Diagram Not to Scale



Date	Record of Station
1928	Beacon found dismantled
1940	Can rebuilt & pole centred
1956	Overhead beacon erected by Mk/S & D.B. Iron tripod with wooden mast & vanes found in good order
1965	Overhead beacon not dismantled; most over D.H. in conc. ring of brickwork; SSM in rock & bolt in rock found
1966	D.H. in rock, SSM & Bolt in rock fd.
1976	Name assigned by GEOGRAPHICAL NAMES BOARD

Integration of N.S.W. RECONNAISSANCE and MAINTENANCE REPORT

This Trig. Station has been: Note: Cross out word or words which do not apply

1. ~~Completely cleared to permit 360° vision to surrounding Trig.~~
2. Cleared by lanes bearing ~~319°M~~; ~~207°M~~; ~~some other views~~; ~~31°M~~ from Trig. Mast
3. ~~Trig. Mast & Vanes have been painted white & black respectively. NO MAST AND VANES~~
4. ~~The Trig. was unspiled/not unspiled, dimensions now being:~~

Description of mark... ~~SS PIN IN CONCRETE IN PM BOX~~ should be explicit, e.g. Steel plug, Brass plug, Bolt, Concrete Pillar

Height of mark... ~~863.4~~ <sup>above</sup> rock/concrete ..... m <sup>above</sup> below G.L.  
Height of Top Vanes to Top Mast/Top pillar plate ..... m Diameter of Vanes (vertical) ..... m.

Height of ~~Centre~~ ..... m. Diameter of ~~Centre~~ ..... m.  
conc. border  
Length of Mast ..... m. (approximate if not unspiled)

5. A. ~~SSM~~ set in ~~conc/rock~~ has been ~~placed~~/fd ~~2.621~~ m. bearing ~~202°~~ °M from Trig. Mast/pillar Plug
6. A. ~~BOLT~~ <sup>rock</sup> ~~BM~~ set in ~~conc/soil~~ has been ~~placed~~/fd ~~3.743~~ m. bearing ~~290°~~ °M from Trig. Mast/pillar Plug
7. A. .... set in conc./soil has been placed/fd ..... m. bearing ..... °M from Trig. Mast/pillar
8. A. .... set in conc./rock has been placed/fd ..... m. bearing ..... °M from Trig. Mast/pillar

9. Connection. ~~SSM~~ to ~~BOLT~~ <sup>↑</sup> ~~BM~~: ~~2.619~~ m. bearing ~~327°~~ °M

10. Connection ..... to ..... : ..... m. bearing ..... °M

11. Connection ..... to ..... : ..... m. bearing ..... °M

12. Connection ..... to ..... : ..... m. bearing ..... °M

13. Diff. Ht. .... is ..... m. <sup>above</sup> below

14. Diff. Ht. .... is ..... m. <sup>above</sup> below

15. Diff. Ht. .... is ..... m. <sup>above</sup> below

16. Diff. Ht. .... is ..... m. <sup>above</sup> below

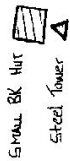
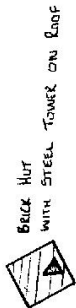
Prepared by: P. EDGAR Checked:

TS 7068  
STATION TS 2179 GIBRALTAR

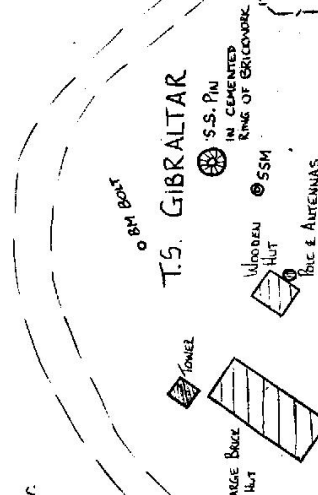
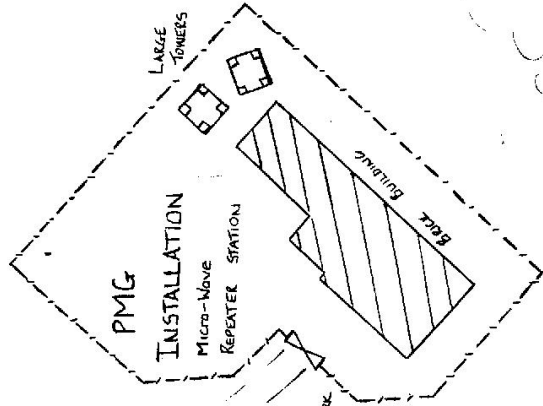
Owners Name.....  
Current Occupant.....

Address.....  
Address.....

Access 31-1-1979



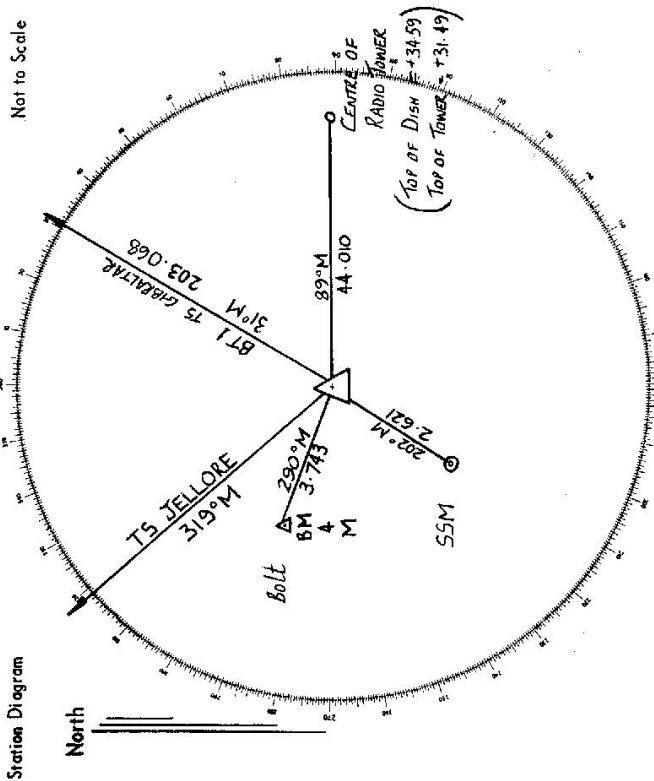
THE GIB  
Mt. Gibraltar.



OXLEY DRIVE scenic road 2.6 Km To HOME HWAY BOWRAL

TIMBER

Not to Scale



List of Observed Directions:-

Standpoint: BM		Standpoint: SSM	
Station	Direction	Station	Direction
TS JELLORE	0° 00' 00"	TS JELLORE	0° 00' 00"
TS GIBRALTAR BT1	70° 20' 57"	BM	6° 08' 02"
TS GIBRALTAR	149° 23' 42"	TS GIBRALTAR	64° 40' 07"
TS GIBRALTAR SSM	186° 03' 00"		
SSM 35021	289° 29' 36"		
Station	Direction	Station	Direction

275-103

TS-7068  
STATION TS 2175 GIBALTAR

Co: CAMDEN Ph: MITTAGONG  
Map Sheet: MITTAGONG 1:25000 No:  
Inspected by: C. STAPLEY Date: 10/12/19  
Authority: DEPT LANDS Field Book: 1464

Beacon Diagram: Not to Scale  
No Beacons.

Department of Lands  
Integra Survey of N.S.W.  
RECONNAISSANCE and MAINTENANCE REPORT

This Trig. Station has been: Note: Cross out word or words which do not apply

1. Completely cleared to permit 360° vision to surrounding Trigs.
2. Cleared by lanes bearing 320°m, 60°m from Trig. Mast
3. Trig. Mast & Vanes have been painted white & black respectively.
4. The Trig. was unpiled/~~not unpiled~~, dimensions now being:

Description of mark: ~~SMALLNESS~~ ~~STONE~~ ~~PILLAR~~ should be explicit, e.g. Steel plug, Brass plug, Bolt, Concrete Pillar  
(on Cover Box) m above rock/concrete m below G.L.

Height of mark: m above rock/concrete m below G.L.

Height of Top Vanes to Top Mark/Top pillar plate: m Diameter of Vanes (vertical): m.

Height of Cairn: m. Diameter of Cairn: m.

Length of Mast: m. (approximate if not unpiled)

5. A BOLT (BM) set in conc/rock has been placed/fd 3.739 m. bearing 789°M from Trig. Mast/pillar

6. A SSM (SM) rock set in conc/rock has been placed/fd 2.614 m. bearing 204°M from Trig. Mast/pillar

7. A BRASS A (BT) rock set in conc/rock has been placed/fd 202.039 m. bearing 29°M from Trig. Mast/pillar

8. A set in conc/rock has been placed/fd m. bearing °M from Trig. Mast/pillar

9. Connection BM to SM: 4.362 m. bearing 145°M

10. Connection: to: m. bearing °M

11. Connection: to: m. bearing °M

12. Connection: to: m. bearing °M

13. Diff. Ht. BM is 0.529 m. above below TRIG PLUG

14. Diff. Ht. SM is 0.546 m. above below TRIG PLUG

15. Diff. Ht. BT is 10.679 m. above below TRIG PLUG

16. Diff. Ht. is m. above below

Prepared by: Checked:

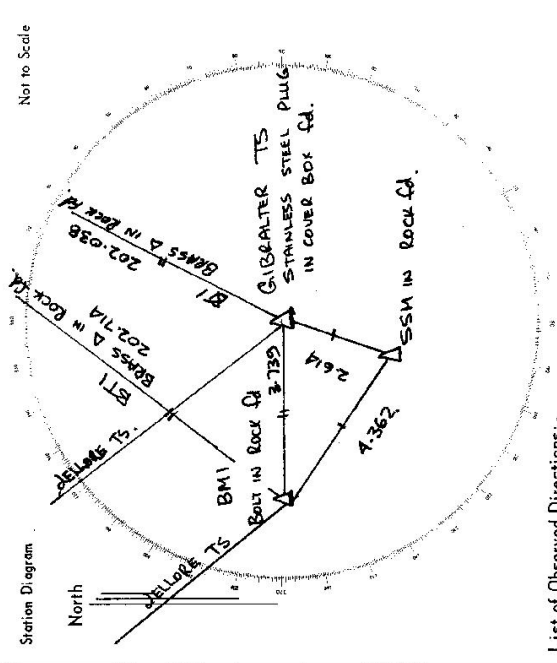
Date	Record of Station



STATION 7068  
TS 215 GIBRALTAR

Owners Name .....  
 Current Occupant .....  
 Address .....  
 Address .....

Access 10-12-1979  
FROM MITTAGONG FOLLOW SIGNS TO "THE GIB"  
WOODKOUT. TS IS NEAR TOWERS.

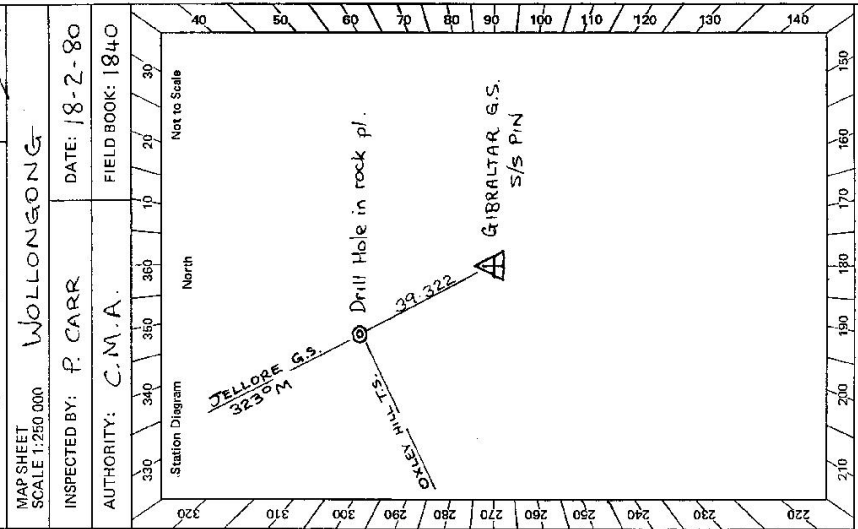


List of Observed Directions:-

Standpoint: TRG PLUG		Standpoint: BOLT	
Station	Direction	Station	Direction
JELLORE TS	0 00 00	BT1	30 00 00
SSM	244 40 22	JELLORE TS	219 39 07
BOLT	329 25 32	GIBRALTAR TS	109 04 30
		SSM	145 42 46
Station	Direction	Station	Direction

TS-7068  
No: 2119

STATION: GIBRALTAR  
MAP SHEET SCALE 1:250,000 WOLLONGONG  
INSPECTED BY: P. CARR  
DATE: 18-2-80  
AUTHORITY: C.M.A.  
FIELD BOOK: 1840



CENTRAL MAPPING AUTHORITY  
GEODETTIC SURVEY OF N.S.W.  
GEODETTIC STATION RECONNAISSANCE and MAINTENANCE REPORT

Description:  
1. Cleared by lanes bearing.....  
2. Mast & Vanes have been painted white & black respectively.  
3. The station/pillar was unplied/net unplied/constructed on.....  
Description of mark: S/S PIN.....  
Height of mark.....  
Height of Top Vanes to Top Mark/Pillar plate.....  
Height of Cairn.....  
Length of Mast.....  
4. A. DRILL HOLE.....  
5. A.....  
6. A.....  
7. A.....  
8. Action required:.....

STANDPOINT: S/S PIN				STANDPOINT: DRILL HOLE placed			
Mark	Direction	Horiz. Distance	Height Difference	Mark	Direction	Horiz. Distance	Height Difference
JELLORE G.S.	0° 00' 00"		above standpt.	JELLORE G.S.	0° 00' 00"		above standpt.
Drill Hole in rock	359 59 01	39.322	below standpt.	GIBRALTAR G.S. S/S PIN	179 58 56	39.323	below standpt.
			above standpt.	OXLEY HILL T.S. (P)	276 09 49		above standpt.
			below standpt.				below standpt.
			above standpt.				above standpt.
			below standpt.				below standpt.
			above standpt.				above standpt.
			below standpt.				below standpt.

Prepared by: P. CARR 24/6/80  
Checked: [Signature]  
Noted on U.T.M. Card  
Checked: [Signature]

TS-7068

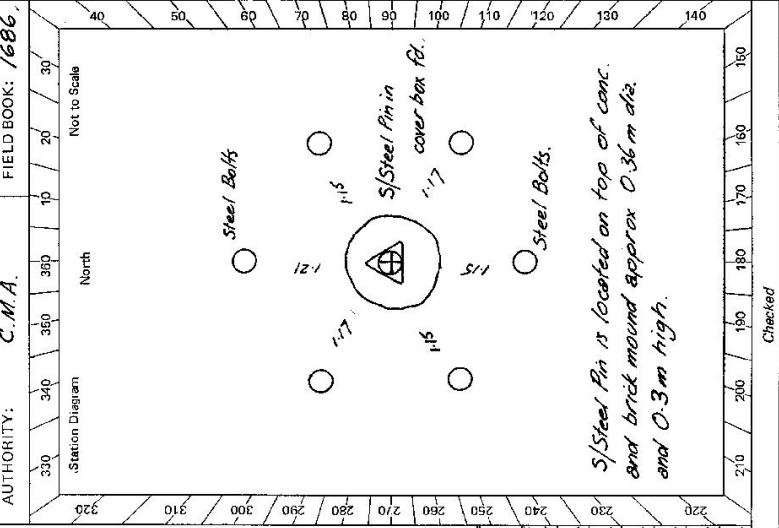
STATION: GIBRALTAR

No.: 2179

MAP SHEET SCALE 1:250 000 Wollongong

INSPECTED BY: P. Naylor DATE: 13.5.82

AUTHORITY: C.M.A. FIELD BOOK: 1686



CENTRAL MAPPING AUTHORITY  
GEODETTIC SURVEY OF M.S.I.V.  
GEODETTIC STATION RECONNAISSANCE and MAINTENANCE REPORT

Description: *Note: Cross out word or words which do not apply*  
 1. Cleared by lanes bearing *Very limited visibility* from Trig. Mast  
 2. Mast & Vanes have been painted white & black respectively  
 3. The station pillar was unspliced/connected on *inspected* 13.5.1982, dimensions now being:  
 Description of mark: *S/Steel Pin* should be explicit, e.g., S/Steel Pillar Plate, Steel plug, Brass plug, Bolt, G.I. Pipe  
 Height of mark: *above* 0.3 m. *below* G.L.  
 Height of Top Vanes to Top Mark/Pillar plate: ..... m. Diameter of Vanes (vertical) ..... m.  
 Height of Cairn: ..... m. Diameter of Cairn: ..... m. Name Plate found/not found/placed.  
 Length of Mast: ..... m. (approximate if not unspliced)  
 4. A. .... set in conc/rock has been placed/found, bearing ..... ° M from Mast/Plug/Pillar  
 5. A. .... set in conc/rock has been placed/found, bearing ..... ° M from Mast/Plug/Pillar  
 6. A. .... set in conc/rock has been placed/found, bearing ..... ° M from Mast/Plug/Pillar  
 7. A. .... set in conc/rock has been placed/found, bearing ..... ° M from Mast/Plug/Pillar  
 8. Action required: .....

STANDPOINT:				STANDPOINT:			
Mark	Direction	Horiz. Distance	Height Difference	Mark	Direction	Horiz. Distance	Height Difference
			above standpt.				above standpt.
			below standpt.				below standpt.
			above standpt.				above standpt.
			below standpt.				below standpt.
			above standpt.				above standpt.
			below standpt.				below standpt.
			above standpt.				above standpt.
			below standpt.				below standpt.

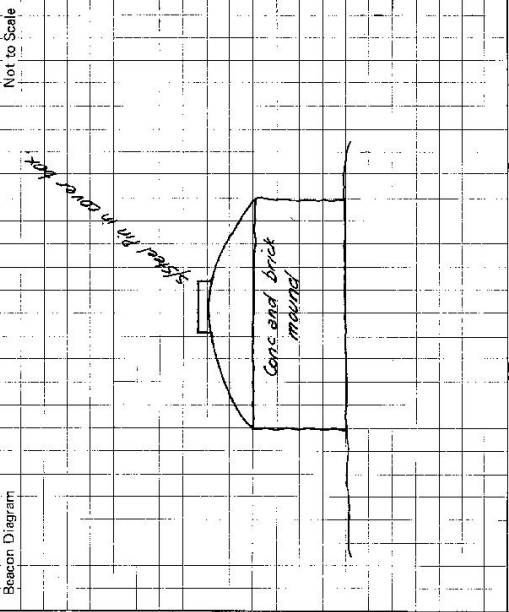
Prepared by: *Paul Naylor 26.1.83* Checked: *Paul Naylor* Noted on U.T.M. Card

STATION **GIBALTAR IS 7068**

Owner's Name: **Wingcarribee Shire Council**  
 Address: **Elizabeth St**  
 Phone: **049 - 911066**  
 Current Occupant: .....  
 Address: .....  
 Phone: .....

Access Report of **5/1/1982** was found suitable/unsuitable. **ACCESS**

*Station inspected to determine suitability for pillar construction. Elevation of mark to 2.0m above C.L. obtains extra visibility, clearing all buildings except Telecom Installation. Placement of concrete pipe over existing mound with concrete pillar on top would be suitable. Wingcarribee Council is willing to assist with supply and transportation of a con. pipe. Tree preservation order exists over this site. Application for approval to undertake clearing is attached to file 55/11/156. Detail plan showing location of all buildings, towers etc is also on that file.*



This section to be completed by officer constructing pillar.

Original station mark found/not found.

Description of mark: .....

Original beacon found/not found.

Description of beacon: .....

Height Top of Vanes to Top Mark: .....m.

Height of mark: .....m. above C.L. below rock/conc. ....m. below

Diameter of Vanes: .....m. Height of Cairn: .....m.

Original Beacon has/has not been destroyed by me.

Date	Record of Station

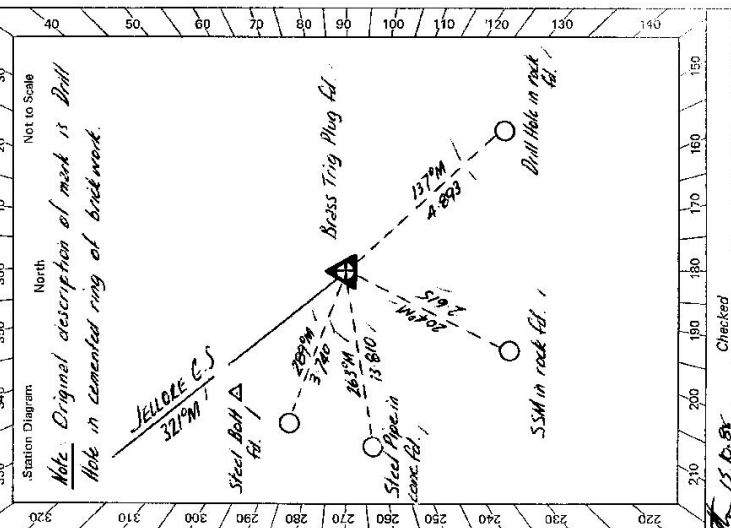
IS: 7068

STATION: GIBRALTAR G.S. / No.: 2775

MAP SHEET SCALE 1:250 000

INSPECTED BY: D. Kain / DATE: 27.7.83

AUTHORITY: C.M.A. / FIELD BOOK: 1931



CENTRAL MAPPING AUTHORITY  
 GEODETIC SURVEY OF M.S.W.  
 GEODETIC STATION RECONNAISSANCE and MAINTENANCE REPORT

- Description: *Note: Cross out word or words which do not apply*
1. Cleared by lanes bearing..... *Note: Cross out word or words which do not apply* from Trig. Mast
  2. Mast & Vanes have been painted white & black respectively.
  3. The station/~~pillar~~ was unplied/~~not unplied~~/~~constructed~~ on 27.7.1983 dimensions now being: *Bress Trig Plug*
  4. Description of mark..... should be explicit, e.g., S/Steel Pillar Plate, Steel plug, Brass plug, Bolt, G.I. Pipe
  5. Height of mark..... m. above rock/concrete; Mark is..... m. above G.L.
  6. Height of Top Vanes to Top Mark/Pillar plate..... m. Diameter of Vanes (vertical)..... m.
  7. Height of Cairn..... m. Diameter of Cairn..... m. Name Plate found/not found/placed.
  8. Length of Mast..... m. (approximate if not unplied)
  9. A..... *Steel Bolt* set in ~~conc~~/~~rock~~ has been ~~placed~~/~~found~~, bearing..... *289* M from Mast/~~Plug~~/~~Pillar~~
  10. A..... *Steel Pipe* set in ~~conc~~/~~rock~~ has been ~~placed~~/~~found~~, bearing..... *263* M from Mast/~~Plug~~/~~Pillar~~
  11. A..... *SSM* set in ~~conc~~/~~rock~~ has been ~~placed~~/~~found~~, bearing..... *204* M from Mast/~~Plug~~/~~Pillar~~
  12. A..... *Drill Hole* set in ~~conc~~/~~rock~~ has been ~~placed~~/~~found~~, bearing..... *137* M from Mast/~~Plug~~/~~Pillar~~
  13. Action required: *5 Steel Pin was removed to uncover this Bress Trig Plug.*

STANDPOINT: *Bress Trig Plug fd in cemented ring of brickwork!*

Mark	Direction	Horiz. Distance	Height Difference	Mark	Direction	Horiz. Distance	Height Difference
JELLORE G.S.	0° 00' 00"		above standpt.				above standpt.
Drill Hole Found	173° 53' 46"	4.893	below standpt.				below standpt.
SSM in rock fd.	244° 36' 25"	2.645	above standpt.				above standpt.
Steel Pipe in conc fd.	303° 38' 34"	13.810	below standpt.				below standpt.
Steel Bolt in rock fd.	328° 27' 02"	3.740	above standpt.				above standpt.
			below standpt.				below standpt.

Prepared by: *Paul Rye* 15.8.83. Checked: *[Signature]* 15.8.83. Noted on U.T.M. Card *[Signature]*

Station Diagram  
 North  
 Not to Scale  
 Note: Original description of mark is Drill Hole in cemented ring of brickwork.

Checked: *[Signature]* 15.8.83

CENTRAL MAPPING AUTHORITY

GEODETIC SURVEY OF N.S.W.

GEODETIC STATION RECONNAISSANCE and MAINTENANCE REPORT

Description:

1. Cleared by lanes bearing *Limited visibility only* *Note: Cross out word or words which do not apply* from Trig. Mast

2. Mast & Vanes have been painted white & black respectively.

3. The station ~~marker~~ *Steel Pin in* was ~~unpiled/not unpiled/constructed~~ on *27.7* *19.83*, dimensions now being:

Description of mark *Steel Pin in* should be explicit, e.g., S/Steel Pillar Plate, Steel plug, Brass plug, Bolt, G.I. Pipe

Height of mark *above* *below* *rock/concrete*; Mark is *above* *below* G.L.

Height of Top Vanes to Top Mark/Pillar plate *above* *below* m. Diameter of Vanes (vertical) *above* *below* m.

Height of Cairn *above* *below* m. Diameter of Cairn *above* *below* m. Name Plate found/~~not found~~/~~placed~~ *in cover box*

Length of Mast *above* *below* m. (approximate if not unpiled)

4. A. *Steel Bolt* set in ~~stone~~/~~rock~~ has been ~~placed~~/~~found~~, bearing *289*° M from Mast/Plug/~~Other~~

5. A. *Steel Pipe* set in ~~stone~~/~~rock~~ has been ~~placed~~/~~found~~, bearing *263*° M from Mast/Plug/~~Other~~

6. A. *S.S.M.* set in ~~stone~~/~~rock~~ has been ~~placed~~/~~found~~, bearing *204*° M from Mast/Plug/~~Other~~

7. A. *Drill Hole* set in ~~stone~~/~~rock~~ has been ~~placed~~/~~found~~, bearing *137*° M from Mast/Plug/~~Other~~

8. Action required: *S/Steel Pin in conc. fd.* STANDPOINT: *Δ Steel Bolt in rock fd.*

Mark	Direction	Horiz. Distance	Height Difference	Mark	Direction	Horiz. Distance	Height Difference
<i>JELLORE GS</i>	<i>0° 00' 00"</i>		<i>above</i> <i>standpt</i>	<i>WATTLE GS (P)</i>	<i>0° 00' 00"</i>		<i>above</i> <i>standpt</i>
<i>Drill Hole in rock</i>	<i>178° 53' 07"</i>	<i>4.891</i>	<i>above</i> <i>standpt</i> / <i>below</i> <i>699</i>	<i>S/Steel Trig Pin</i>	<i>206° 54' 32"</i>	<i>3.739</i>	<i>above</i> <i>standpt</i> / <i>below</i> <i>539</i>
<i>S.S.M. in rock</i>	<i>244° 35' 04"</i>	<i>2.616</i>	<i>above</i> <i>standpt</i> / <i>below</i> <i>560</i>	<i>Drill Hole in rock</i>	<i>222° 00' 52"</i>	<i>8.403</i>	<i>above</i> <i>standpt</i> / <i>below</i> <i>159</i>
<i>Steel Pipe in conc.</i>	<i>303° 31' 48"</i>	<i>13.813</i>	<i>above</i> <i>standpt</i> / <i>below</i> <i>774</i>	<i>S.S.M. in rock</i>	<i>243° 36' 42"</i>	<i>4.362</i>	<i>above</i> <i>standpt</i> / <i>below</i> <i>022</i>
<i>WATTLE GS (P)</i>	<i>302° 28' 38"</i>		<i>above</i> <i>standpt</i> / <i>below</i> <i>537</i>	<i>Steel Pipe in conc.</i>	<i>352° 19' 00"</i>	<i>10.570</i>	<i>above</i> <i>standpt</i> / <i>below</i> <i>235</i>
<i>Steel Bolt in rock</i>	<i>325° 23' 14"</i>	<i>3.739</i>	<i>above</i> <i>standpt</i> / <i>below</i> <i>537</i>				<i>above</i> <i>standpt</i> / <i>below</i> <i>below</i>

Prepared by: *Paul Mayhew*

Checked: *15/6/83*

Noted on U.T.M. Card

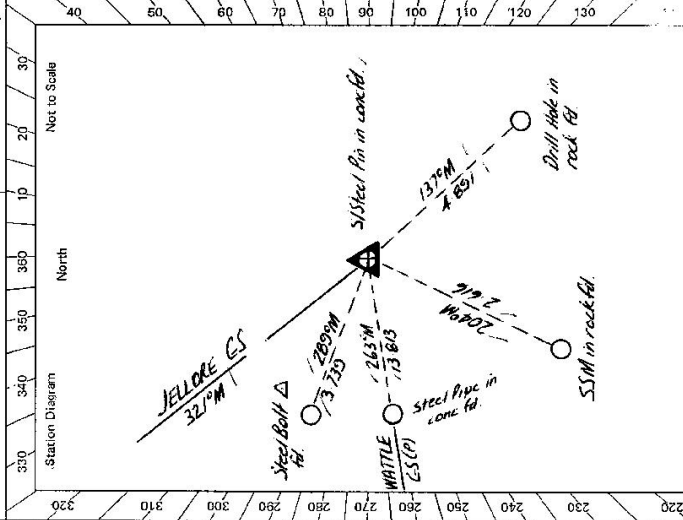
SI 2733-1

STATION: *GIBRALTAR GS* / No: *279*

MAP SHEET SCALE 1:250 000

INSPECTED BY: *D. Keir* / DATE: *27.7.83*

AUTHORITY: *C.M.A.* / FIELD BOOK: *1931*



Station Diagram North

Checked: *15.10.85*



GEODETIC SURVEY OF N.S.W.

CENTRAL MAPPING AUTHORITY

GEODETIC STATION RECONNAISSANCE and MAINTENANCE REPORT

Description:

1. Cleared by lanes bearing *Limited Visibility only* from Trig. Mast

2. Mast & Vanes have been painted white & black respectively.

3. The ~~station~~ pillar was ~~emptied/not emptied~~/constructed on *3 E* 1983, dimensions now being: *Steel Plate*

Description of mark *Steel Plate* should be explicit, e.g., S/Steel Pillar Plate, Steel plug, Brass plug, Bolt, G.I. Pipe

Height of mark *1.37* m. <sup>above</sup> ~~below~~ rock/concrete; Mark is *4.03* m. <sup>above</sup> G.L.

Height of Top Vanes to Top Mark/Pillar plate *1.045* m. Diameter of Vanes (vertical) *0.75* m.

Height of Cairn *0.00* m. Diameter of Cairn *0.00* m. Name Plate ~~found~~/not ~~found~~/placed.

Length of Mast *0.00* m. (approximate if not unplied)

4. A. *Steel Bolt* set in ~~conc~~/rock has been ~~placed~~/found, bearing *289* °M from Mast/Plug/Pillar

5. A. *Steel Pipe* set in ~~conc~~/rock has been ~~placed~~/found, bearing *263* °M from Mast/Plug/Pillar

6. A. *SSM* set in ~~conc~~/rock has been ~~placed~~/found, bearing *264* °M from Mast/Plug/Pillar

7. A. *Drill Hole* set in ~~conc~~/rock has been ~~placed~~/found, bearing *137* °M from Mast/Plug/Pillar

8. Action required: *Placement of Name Plate*

STANDPOINT: <i>Conc Obs Pillar</i>		STANDPOINT: <i>Δ Steel Bolt in rock A</i>	
Mark	Direction	Horiz. Distance	Height Difference
<i>JELLORE CS</i>	<i>0° 00' 00"</i>		
<i>SHERWIN CS (P)</i>	<i>88° 24' 26"</i>		
<i>Drill Hole in rock</i>	<i>178° 45' 10"</i>	<i>4.911</i>	<i>4.372</i> above standpt.
<i>SSM in rock</i>	<i>244° 48' 40"</i>	<i>2.688</i>	<i>4.239</i> above standpt.
<i>WATTLE CS (P)</i>	<i>302° 28' 55"</i>		
<i>Steel Pipe in conc</i>	<i>303° 23' 46"</i>	<i>13.853</i>	<i>4.455</i> above standpt.
<i>Steel Bolt in rock</i>	<i>328° 19' 00"</i>	<i>3.752</i>	<i>4.220</i> above standpt.
Prepared by: <i>Paul Page</i>			
			Checked: <i>15.8.83</i>

Noted on U.T.M. Card

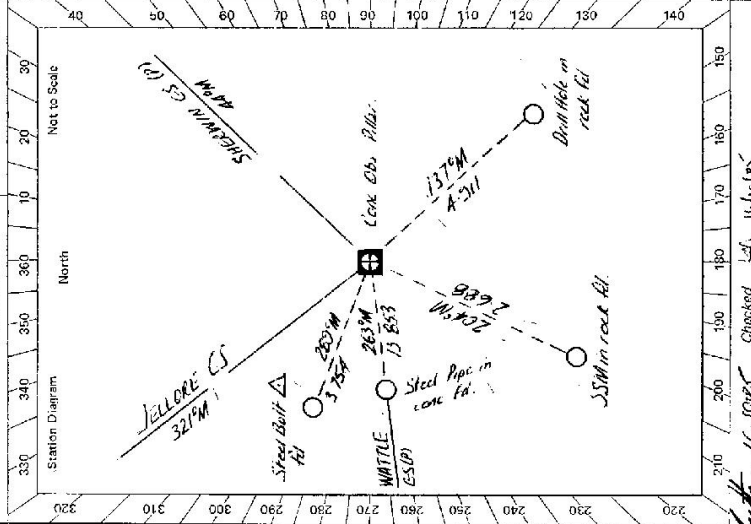
SI-2732-1

STATION: *GIBRALTAR CS (P)* No: *7068*

MAP SHEET SCALE 1:250 000

INSPECTED BY: *D Ken* DATE: *4.8.83*

AUTHORITY: *C.M.A.* FIELD BOOK: *1931*



Checked: *16.8.88* 16/8/88



STATION **C-186ALIME C.S (P) TS 7068**

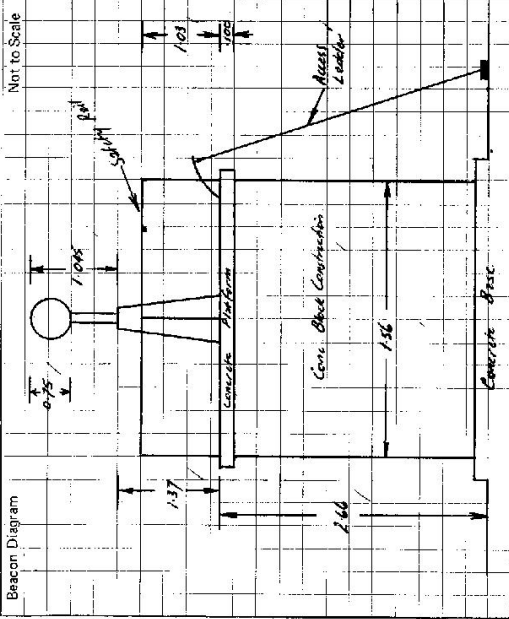
Owner's Name: **WINECHAREBEE SHARE COMPANY**  
 Address: **MOS VALE**  
 Contact: **Spencer Buchanan - Town Planner**  
 Phone: **048 91 1066**

Current Occupant: .....  
 Address: .....  
 Phone: .....

ACCESS

Access Report of 4.12.1983 was found suitable/unsuitable.

**PILLAR IS LOCATED ON THE C-18 " ADJACENT TO THE TELECOM FACILITY. THE C-18 " CAN BE ACCESSED FROM EITHER BONGAL OR MITTAGONGE BY WELL SIGNPOSTED TOURIST ROUTES.**



This section to be completed by officer constructing pillar.

Original station mark found/~~not found~~.  
 Description of mark: **S/Steel Tidy Pin**  
 Original beacon ~~found~~ not found.  
 Description of beacon: **Brick and concrete masonry**  
 Height Top of Vanes to Top Mark: .....m.  
 Height of mark: ~~.....m.~~ **above reconstituted 0.3** above G.L.  
 Diameter of Vanes: .....m. Height of Cairn: .....m.  
 Original Beacon has ~~been~~ been destroyed by me.

Date	Record of Station