

TS 6948
No.: 3262

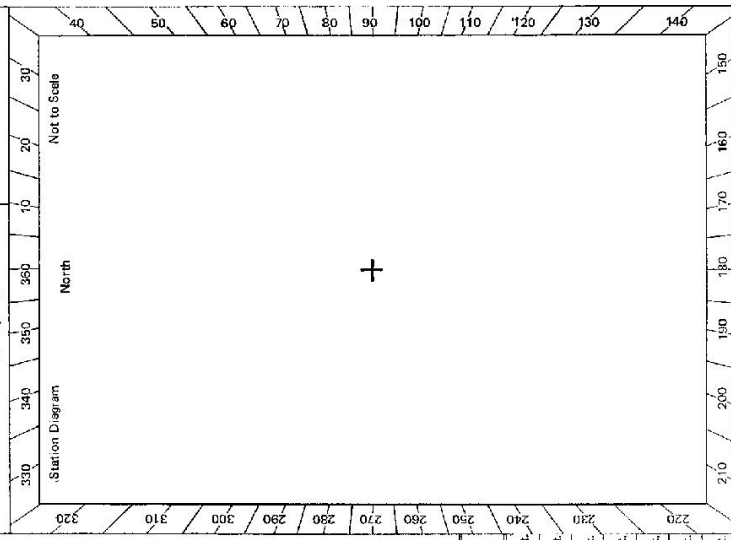
CENTRAL MAPPING AUTHORITY
GEODETTIC SURVEY OF M.S.W.

GEODETTIC STATION RECONNAISSANCE and MAINTENANCE REPORT

STATION: THUNDERBOLT F.S
MAP SHEET SCALE 1:250 000
INSPECTED BY: P. K. BAMOLA
AUTHORITY: C.M.A

DATE: 01. 1978
FIELD BOOK:

Description:
1. Cleared by lances bearing..... Note: Cross out word or words which do not apply
2. Mast & Vanes have been painted white & black respectively.
3. The station/pillar was ~~unplied~~/not unplied/constructed on..... from Trig. Mast
Description of mark..... should be explicit, e.g., S/Steel Pillar Plate, Steel plug, Brass plug, Bolt, G.I. Pipe
Height of mark..... m. above rock/concrete; Mark is m. above G.L.
Height of Top Vanes to Top Mark/Pillar plate m. Diameter of Vanes (vertical)..... m.
Height of Cairn..... m. Diameter of Cairn..... m. Name Plate found/not found/placed.
Length of Mast..... m. above top of Cairn broken. (approximate if not unplied)
4. A..... set in conc./rock has been placed/found, bearing..... M from Mast/Plug/Pillar
5. A..... set in conc./rock has been placed/found, bearing..... M from Mast/Plug/Pillar
6. A..... set in conc./rock has been placed/found, bearing..... M from Mast/Plug/Pillar
7. A..... set in conc./rock has been placed/found, bearing..... M from Mast/Plug/Pillar
8. Action required: Beacon needs to be replaced. Station suitable for pillar construction

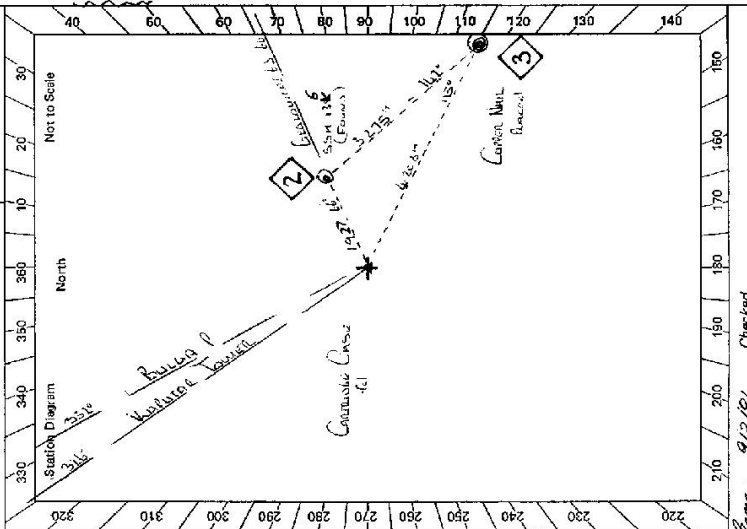


STANDPOINT:	Mark	Direction	Horiz. Distance	Height Difference	Mark	Direct on	Horiz. Distance	Height Difference
				above standpt.				above standpt.
				below				below
				above standpt.				above standpt.
				below				below
				above standpt.				above standpt.
				below				below
				above standpt.				above standpt.
				below				below
				above standpt.				above standpt.
				below				below
				above standpt.				above standpt.
				below				below

Prepared by: P.K. BAMOLA 19/1/78 Checked: Noted on U.T.M. Card

CENTRAL MAPPING AUTHORITY
 GEODETTIC SURVEY OF NSW
 STATION: THUNDERBOLT No: 4322
 MAPSHEET SCALE 1:250 000
 INSPECTED BY: L. O. HOLLIS DATE: 19-11-60
 AUTHORITY: C.M.A. FIELD BOOK: 1315

DESCRIPTION:
 1. Cleared by lanes bearing.....
 2. Mast & Vanes have been painted white & black respectively. ✓
 3. The station/pillar was unpiled/~~re-erected~~/constructed on..... dimensions now being:
 Description of mark..... should be explicit, e.g. S/Steel Pillar Plate, Steel plug, Brass plug, Bolt, G.I. Pipe
 Height of mark..... above G.L.
 Height of Top Vanes to Top Mark/~~Plate~~..... Diameter of Vanes (vertical).....
 Height of Cairn..... Diameter of Cairn..... Name Plate ~~found/not found~~/placed.
 Length of Mast..... (approximate if not supplied)
 4. A..... set in conc/rock has been placed/found, bearing..... M from Mast/Plug/Pillar
 5. A..... set in conc/rock has been placed/~~found~~ bearing..... M from Mast/Plug/Pillar
 6. A..... set in conc/rock has been placed/found, bearing..... M from Mast/Plug/Pillar
 7. A..... set in conc/rock has been placed/found, bearing..... M from Mast/Plug/Pillar
 8. Action required:.....



Mark	Direction	Horiz. Distance	Height Difference	Mark	Direction	Horiz. Distance	Height Difference
GEODETIC CASE	0 00 00		above standpt.	GEODETIC CASE	0 00 00		above standpt.
S.S.M. 136	0 23 45	1428	above standpt.	Cairn Mast	75 33 15	3.275	above standpt.
Cairn Mast	149 15 40	4.203	above standpt.	Calcutta Case	185 20 00	1.116	below standpt.
Vertical Tower	259 38 40		above standpt.	Calcutta Case	259 38 40		below standpt.
Bullseye Pillar	265 08 35		above standpt.	Bullseye P.	265 08 35		above standpt.
			below				below

STANDPOINT: CALCUTTA CASE
 STANDPOINT: S.S.M. 136

Prepared by: [Signature]
 Checked: [Signature]
 Noted on U.T.M. Card 9/3/81

GS

STATION THUNDERBOLT GS TS 6948	Owner's Name: Mr. R. B. RAYNE Address: 12/1880 Phone: 780-233-1111 Current Occupant: Mr. R. B. RAYNE Address: 12/1880 Phone: 780-233-1111 ACCESS Access Report on 12/1880 was found suitable/unsuitable.																																																																																																																																																																																				
Beacon Diagram Not to Scale 	<table border="1" style="width:100%; border-collapse: collapse;"> <thead> <tr> <th style="width: 10%;">km</th> <th style="width: 90%;">Footnote</th> </tr> </thead> <tbody> <tr><td>1200</td><td>CRIBBELL PO HEAD TOWNERS SUBSTATION</td></tr> <tr><td>1300</td><td>TRAIL LEFT SAND BLAZIA</td></tr> <tr><td>1400</td><td>TRAIL LEFT ON LEFT</td></tr> <tr><td>1500</td><td>TRAIL LEFT SAND BLAZIA</td></tr> <tr><td>1600</td><td>TRAIL LEFT SAND BLAZIA</td></tr> <tr><td>1700</td><td>TRAIL LEFT SAND BLAZIA</td></tr> <tr><td>1800</td><td>TRAIL LEFT SAND BLAZIA</td></tr> <tr><td>1900</td><td>TRAIL LEFT SAND BLAZIA</td></tr> <tr><td>2000</td><td>TRAIL LEFT SAND BLAZIA</td></tr> <tr><td>2100</td><td>TRAIL LEFT SAND BLAZIA</td></tr> <tr><td>2200</td><td>TRAIL LEFT SAND BLAZIA</td></tr> <tr><td>2300</td><td>TRAIL LEFT SAND BLAZIA</td></tr> <tr><td>2400</td><td>TRAIL LEFT SAND BLAZIA</td></tr> <tr><td>2500</td><td>TRAIL LEFT SAND BLAZIA</td></tr> <tr><td>2600</td><td>TRAIL LEFT SAND BLAZIA</td></tr> <tr><td>2700</td><td>TRAIL LEFT SAND BLAZIA</td></tr> <tr><td>2800</td><td>TRAIL LEFT SAND BLAZIA</td></tr> <tr><td>2900</td><td>TRAIL LEFT SAND BLAZIA</td></tr> <tr><td>3000</td><td>TRAIL LEFT SAND BLAZIA</td></tr> <tr><td>3100</td><td>TRAIL LEFT SAND BLAZIA</td></tr> <tr><td>3200</td><td>TRAIL LEFT SAND BLAZIA</td></tr> <tr><td>3300</td><td>TRAIL LEFT SAND BLAZIA</td></tr> <tr><td>3400</td><td>TRAIL LEFT SAND BLAZIA</td></tr> <tr><td>3500</td><td>TRAIL LEFT SAND BLAZIA</td></tr> <tr><td>3600</td><td>TRAIL LEFT SAND BLAZIA</td></tr> <tr><td>3700</td><td>TRAIL LEFT SAND BLAZIA</td></tr> <tr><td>3800</td><td>TRAIL LEFT SAND BLAZIA</td></tr> <tr><td>3900</td><td>TRAIL LEFT SAND BLAZIA</td></tr> <tr><td>4000</td><td>TRAIL LEFT SAND BLAZIA</td></tr> <tr><td>4100</td><td>TRAIL LEFT SAND BLAZIA</td></tr> <tr><td>4200</td><td>TRAIL LEFT SAND BLAZIA</td></tr> <tr><td>4300</td><td>TRAIL LEFT SAND BLAZIA</td></tr> <tr><td>4400</td><td>TRAIL LEFT SAND BLAZIA</td></tr> <tr><td>4500</td><td>TRAIL LEFT SAND BLAZIA</td></tr> <tr><td>4600</td><td>TRAIL LEFT SAND BLAZIA</td></tr> <tr><td>4700</td><td>TRAIL LEFT SAND BLAZIA</td></tr> <tr><td>4800</td><td>TRAIL LEFT SAND BLAZIA</td></tr> <tr><td>4900</td><td>TRAIL LEFT SAND BLAZIA</td></tr> <tr><td>5000</td><td>TRAIL LEFT SAND BLAZIA</td></tr> <tr><td>5100</td><td>TRAIL LEFT SAND BLAZIA</td></tr> <tr><td>5200</td><td>TRAIL LEFT SAND BLAZIA</td></tr> <tr><td>5300</td><td>TRAIL LEFT SAND BLAZIA</td></tr> <tr><td>5400</td><td>TRAIL LEFT SAND BLAZIA</td></tr> <tr><td>5500</td><td>TRAIL LEFT SAND BLAZIA</td></tr> <tr><td>5600</td><td>TRAIL LEFT SAND BLAZIA</td></tr> <tr><td>5700</td><td>TRAIL LEFT SAND BLAZIA</td></tr> <tr><td>5800</td><td>TRAIL LEFT SAND BLAZIA</td></tr> <tr><td>5900</td><td>TRAIL LEFT SAND BLAZIA</td></tr> <tr><td>6000</td><td>TRAIL LEFT SAND BLAZIA</td></tr> <tr><td>6100</td><td>TRAIL LEFT SAND BLAZIA</td></tr> <tr><td>6200</td><td>TRAIL LEFT SAND BLAZIA</td></tr> <tr><td>6300</td><td>TRAIL LEFT SAND BLAZIA</td></tr> <tr><td>6400</td><td>TRAIL LEFT SAND BLAZIA</td></tr> <tr><td>6500</td><td>TRAIL LEFT SAND BLAZIA</td></tr> <tr><td>6600</td><td>TRAIL LEFT SAND BLAZIA</td></tr> <tr><td>6700</td><td>TRAIL LEFT SAND BLAZIA</td></tr> <tr><td>6800</td><td>TRAIL LEFT SAND BLAZIA</td></tr> <tr><td>6900</td><td>TRAIL LEFT SAND BLAZIA</td></tr> <tr><td>7000</td><td>TRAIL LEFT SAND BLAZIA</td></tr> <tr><td>7100</td><td>TRAIL LEFT SAND BLAZIA</td></tr> <tr><td>7200</td><td>TRAIL LEFT SAND BLAZIA</td></tr> <tr><td>7300</td><td>TRAIL LEFT SAND BLAZIA</td></tr> <tr><td>7400</td><td>TRAIL LEFT SAND BLAZIA</td></tr> <tr><td>7500</td><td>TRAIL LEFT SAND BLAZIA</td></tr> <tr><td>7600</td><td>TRAIL LEFT SAND BLAZIA</td></tr> <tr><td>7700</td><td>TRAIL LEFT SAND BLAZIA</td></tr> <tr><td>7800</td><td>TRAIL LEFT SAND BLAZIA</td></tr> <tr><td>7900</td><td>TRAIL LEFT SAND BLAZIA</td></tr> <tr><td>8000</td><td>TRAIL LEFT SAND BLAZIA</td></tr> <tr><td>8100</td><td>TRAIL LEFT SAND BLAZIA</td></tr> <tr><td>8200</td><td>TRAIL LEFT SAND BLAZIA</td></tr> <tr><td>8300</td><td>TRAIL LEFT SAND BLAZIA</td></tr> <tr><td>8400</td><td>TRAIL LEFT SAND BLAZIA</td></tr> <tr><td>8500</td><td>TRAIL LEFT SAND BLAZIA</td></tr> <tr><td>8600</td><td>TRAIL LEFT SAND BLAZIA</td></tr> <tr><td>8700</td><td>TRAIL LEFT SAND BLAZIA</td></tr> <tr><td>8800</td><td>TRAIL LEFT SAND BLAZIA</td></tr> <tr><td>8900</td><td>TRAIL LEFT SAND BLAZIA</td></tr> <tr><td>9000</td><td>TRAIL LEFT SAND BLAZIA</td></tr> <tr><td>9100</td><td>TRAIL LEFT SAND BLAZIA</td></tr> <tr><td>9200</td><td>TRAIL LEFT SAND BLAZIA</td></tr> <tr><td>9300</td><td>TRAIL LEFT SAND BLAZIA</td></tr> <tr><td>9400</td><td>TRAIL LEFT SAND BLAZIA</td></tr> <tr><td>9500</td><td>TRAIL LEFT SAND BLAZIA</td></tr> <tr><td>9600</td><td>TRAIL LEFT SAND BLAZIA</td></tr> <tr><td>9700</td><td>TRAIL LEFT SAND BLAZIA</td></tr> <tr><td>9800</td><td>TRAIL LEFT SAND BLAZIA</td></tr> <tr><td>9900</td><td>TRAIL LEFT SAND BLAZIA</td></tr> <tr><td>10000</td><td>TRAIL LEFT SAND BLAZIA</td></tr> </tbody> </table>	km	Footnote	1200	CRIBBELL PO HEAD TOWNERS SUBSTATION	1300	TRAIL LEFT SAND BLAZIA	1400	TRAIL LEFT ON LEFT	1500	TRAIL LEFT SAND BLAZIA	1600	TRAIL LEFT SAND BLAZIA	1700	TRAIL LEFT SAND BLAZIA	1800	TRAIL LEFT SAND BLAZIA	1900	TRAIL LEFT SAND BLAZIA	2000	TRAIL LEFT SAND BLAZIA	2100	TRAIL LEFT SAND BLAZIA	2200	TRAIL LEFT SAND BLAZIA	2300	TRAIL LEFT SAND BLAZIA	2400	TRAIL LEFT SAND BLAZIA	2500	TRAIL LEFT SAND BLAZIA	2600	TRAIL LEFT SAND BLAZIA	2700	TRAIL LEFT SAND BLAZIA	2800	TRAIL LEFT SAND BLAZIA	2900	TRAIL LEFT SAND BLAZIA	3000	TRAIL LEFT SAND BLAZIA	3100	TRAIL LEFT SAND BLAZIA	3200	TRAIL LEFT SAND BLAZIA	3300	TRAIL LEFT SAND BLAZIA	3400	TRAIL LEFT SAND BLAZIA	3500	TRAIL LEFT SAND BLAZIA	3600	TRAIL LEFT SAND BLAZIA	3700	TRAIL LEFT SAND BLAZIA	3800	TRAIL LEFT SAND BLAZIA	3900	TRAIL LEFT SAND BLAZIA	4000	TRAIL LEFT SAND BLAZIA	4100	TRAIL LEFT SAND BLAZIA	4200	TRAIL LEFT SAND BLAZIA	4300	TRAIL LEFT SAND BLAZIA	4400	TRAIL LEFT SAND BLAZIA	4500	TRAIL LEFT SAND BLAZIA	4600	TRAIL LEFT SAND BLAZIA	4700	TRAIL LEFT SAND BLAZIA	4800	TRAIL LEFT SAND BLAZIA	4900	TRAIL LEFT SAND BLAZIA	5000	TRAIL LEFT SAND BLAZIA	5100	TRAIL LEFT SAND BLAZIA	5200	TRAIL LEFT SAND BLAZIA	5300	TRAIL LEFT SAND BLAZIA	5400	TRAIL LEFT SAND BLAZIA	5500	TRAIL LEFT SAND BLAZIA	5600	TRAIL LEFT SAND BLAZIA	5700	TRAIL LEFT SAND BLAZIA	5800	TRAIL LEFT SAND BLAZIA	5900	TRAIL LEFT SAND BLAZIA	6000	TRAIL LEFT SAND BLAZIA	6100	TRAIL LEFT SAND BLAZIA	6200	TRAIL LEFT SAND BLAZIA	6300	TRAIL LEFT SAND BLAZIA	6400	TRAIL LEFT SAND BLAZIA	6500	TRAIL LEFT SAND BLAZIA	6600	TRAIL LEFT SAND BLAZIA	6700	TRAIL LEFT SAND BLAZIA	6800	TRAIL LEFT SAND BLAZIA	6900	TRAIL LEFT SAND BLAZIA	7000	TRAIL LEFT SAND BLAZIA	7100	TRAIL LEFT SAND BLAZIA	7200	TRAIL LEFT SAND BLAZIA	7300	TRAIL LEFT SAND BLAZIA	7400	TRAIL LEFT SAND BLAZIA	7500	TRAIL LEFT SAND BLAZIA	7600	TRAIL LEFT SAND BLAZIA	7700	TRAIL LEFT SAND BLAZIA	7800	TRAIL LEFT SAND BLAZIA	7900	TRAIL LEFT SAND BLAZIA	8000	TRAIL LEFT SAND BLAZIA	8100	TRAIL LEFT SAND BLAZIA	8200	TRAIL LEFT SAND BLAZIA	8300	TRAIL LEFT SAND BLAZIA	8400	TRAIL LEFT SAND BLAZIA	8500	TRAIL LEFT SAND BLAZIA	8600	TRAIL LEFT SAND BLAZIA	8700	TRAIL LEFT SAND BLAZIA	8800	TRAIL LEFT SAND BLAZIA	8900	TRAIL LEFT SAND BLAZIA	9000	TRAIL LEFT SAND BLAZIA	9100	TRAIL LEFT SAND BLAZIA	9200	TRAIL LEFT SAND BLAZIA	9300	TRAIL LEFT SAND BLAZIA	9400	TRAIL LEFT SAND BLAZIA	9500	TRAIL LEFT SAND BLAZIA	9600	TRAIL LEFT SAND BLAZIA	9700	TRAIL LEFT SAND BLAZIA	9800	TRAIL LEFT SAND BLAZIA	9900	TRAIL LEFT SAND BLAZIA	10000	TRAIL LEFT SAND BLAZIA
km	Footnote																																																																																																																																																																																				
1200	CRIBBELL PO HEAD TOWNERS SUBSTATION																																																																																																																																																																																				
1300	TRAIL LEFT SAND BLAZIA																																																																																																																																																																																				
1400	TRAIL LEFT ON LEFT																																																																																																																																																																																				
1500	TRAIL LEFT SAND BLAZIA																																																																																																																																																																																				
1600	TRAIL LEFT SAND BLAZIA																																																																																																																																																																																				
1700	TRAIL LEFT SAND BLAZIA																																																																																																																																																																																				
1800	TRAIL LEFT SAND BLAZIA																																																																																																																																																																																				
1900	TRAIL LEFT SAND BLAZIA																																																																																																																																																																																				
2000	TRAIL LEFT SAND BLAZIA																																																																																																																																																																																				
2100	TRAIL LEFT SAND BLAZIA																																																																																																																																																																																				
2200	TRAIL LEFT SAND BLAZIA																																																																																																																																																																																				
2300	TRAIL LEFT SAND BLAZIA																																																																																																																																																																																				
2400	TRAIL LEFT SAND BLAZIA																																																																																																																																																																																				
2500	TRAIL LEFT SAND BLAZIA																																																																																																																																																																																				
2600	TRAIL LEFT SAND BLAZIA																																																																																																																																																																																				
2700	TRAIL LEFT SAND BLAZIA																																																																																																																																																																																				
2800	TRAIL LEFT SAND BLAZIA																																																																																																																																																																																				
2900	TRAIL LEFT SAND BLAZIA																																																																																																																																																																																				
3000	TRAIL LEFT SAND BLAZIA																																																																																																																																																																																				
3100	TRAIL LEFT SAND BLAZIA																																																																																																																																																																																				
3200	TRAIL LEFT SAND BLAZIA																																																																																																																																																																																				
3300	TRAIL LEFT SAND BLAZIA																																																																																																																																																																																				
3400	TRAIL LEFT SAND BLAZIA																																																																																																																																																																																				
3500	TRAIL LEFT SAND BLAZIA																																																																																																																																																																																				
3600	TRAIL LEFT SAND BLAZIA																																																																																																																																																																																				
3700	TRAIL LEFT SAND BLAZIA																																																																																																																																																																																				
3800	TRAIL LEFT SAND BLAZIA																																																																																																																																																																																				
3900	TRAIL LEFT SAND BLAZIA																																																																																																																																																																																				
4000	TRAIL LEFT SAND BLAZIA																																																																																																																																																																																				
4100	TRAIL LEFT SAND BLAZIA																																																																																																																																																																																				
4200	TRAIL LEFT SAND BLAZIA																																																																																																																																																																																				
4300	TRAIL LEFT SAND BLAZIA																																																																																																																																																																																				
4400	TRAIL LEFT SAND BLAZIA																																																																																																																																																																																				
4500	TRAIL LEFT SAND BLAZIA																																																																																																																																																																																				
4600	TRAIL LEFT SAND BLAZIA																																																																																																																																																																																				
4700	TRAIL LEFT SAND BLAZIA																																																																																																																																																																																				
4800	TRAIL LEFT SAND BLAZIA																																																																																																																																																																																				
4900	TRAIL LEFT SAND BLAZIA																																																																																																																																																																																				
5000	TRAIL LEFT SAND BLAZIA																																																																																																																																																																																				
5100	TRAIL LEFT SAND BLAZIA																																																																																																																																																																																				
5200	TRAIL LEFT SAND BLAZIA																																																																																																																																																																																				
5300	TRAIL LEFT SAND BLAZIA																																																																																																																																																																																				
5400	TRAIL LEFT SAND BLAZIA																																																																																																																																																																																				
5500	TRAIL LEFT SAND BLAZIA																																																																																																																																																																																				
5600	TRAIL LEFT SAND BLAZIA																																																																																																																																																																																				
5700	TRAIL LEFT SAND BLAZIA																																																																																																																																																																																				
5800	TRAIL LEFT SAND BLAZIA																																																																																																																																																																																				
5900	TRAIL LEFT SAND BLAZIA																																																																																																																																																																																				
6000	TRAIL LEFT SAND BLAZIA																																																																																																																																																																																				
6100	TRAIL LEFT SAND BLAZIA																																																																																																																																																																																				
6200	TRAIL LEFT SAND BLAZIA																																																																																																																																																																																				
6300	TRAIL LEFT SAND BLAZIA																																																																																																																																																																																				
6400	TRAIL LEFT SAND BLAZIA																																																																																																																																																																																				
6500	TRAIL LEFT SAND BLAZIA																																																																																																																																																																																				
6600	TRAIL LEFT SAND BLAZIA																																																																																																																																																																																				
6700	TRAIL LEFT SAND BLAZIA																																																																																																																																																																																				
6800	TRAIL LEFT SAND BLAZIA																																																																																																																																																																																				
6900	TRAIL LEFT SAND BLAZIA																																																																																																																																																																																				
7000	TRAIL LEFT SAND BLAZIA																																																																																																																																																																																				
7100	TRAIL LEFT SAND BLAZIA																																																																																																																																																																																				
7200	TRAIL LEFT SAND BLAZIA																																																																																																																																																																																				
7300	TRAIL LEFT SAND BLAZIA																																																																																																																																																																																				
7400	TRAIL LEFT SAND BLAZIA																																																																																																																																																																																				
7500	TRAIL LEFT SAND BLAZIA																																																																																																																																																																																				
7600	TRAIL LEFT SAND BLAZIA																																																																																																																																																																																				
7700	TRAIL LEFT SAND BLAZIA																																																																																																																																																																																				
7800	TRAIL LEFT SAND BLAZIA																																																																																																																																																																																				
7900	TRAIL LEFT SAND BLAZIA																																																																																																																																																																																				
8000	TRAIL LEFT SAND BLAZIA																																																																																																																																																																																				
8100	TRAIL LEFT SAND BLAZIA																																																																																																																																																																																				
8200	TRAIL LEFT SAND BLAZIA																																																																																																																																																																																				
8300	TRAIL LEFT SAND BLAZIA																																																																																																																																																																																				
8400	TRAIL LEFT SAND BLAZIA																																																																																																																																																																																				
8500	TRAIL LEFT SAND BLAZIA																																																																																																																																																																																				
8600	TRAIL LEFT SAND BLAZIA																																																																																																																																																																																				
8700	TRAIL LEFT SAND BLAZIA																																																																																																																																																																																				
8800	TRAIL LEFT SAND BLAZIA																																																																																																																																																																																				
8900	TRAIL LEFT SAND BLAZIA																																																																																																																																																																																				
9000	TRAIL LEFT SAND BLAZIA																																																																																																																																																																																				
9100	TRAIL LEFT SAND BLAZIA																																																																																																																																																																																				
9200	TRAIL LEFT SAND BLAZIA																																																																																																																																																																																				
9300	TRAIL LEFT SAND BLAZIA																																																																																																																																																																																				
9400	TRAIL LEFT SAND BLAZIA																																																																																																																																																																																				
9500	TRAIL LEFT SAND BLAZIA																																																																																																																																																																																				
9600	TRAIL LEFT SAND BLAZIA																																																																																																																																																																																				
9700	TRAIL LEFT SAND BLAZIA																																																																																																																																																																																				
9800	TRAIL LEFT SAND BLAZIA																																																																																																																																																																																				
9900	TRAIL LEFT SAND BLAZIA																																																																																																																																																																																				
10000	TRAIL LEFT SAND BLAZIA																																																																																																																																																																																				
This section to be completed by officer constructing pillar. Original station mark found/not found. Description of mark: Original beacon found/not found. Description of beacon: Height Top of Vanes to Top Mark.....m. Height of mark.....m. above G.L. below Diameter of Vanes.....m. Height of Cairn.....m. Original Beacon has/not been destroyed by me.	Date Record of Station																																																																																																																																																																																				

GEODETIC SURVEY OF M.S.M.

CENTRAL MAPPING AUTHORITY

GEODETIC STATION RECONNAISSANCE and MAINTENANCE REPORT

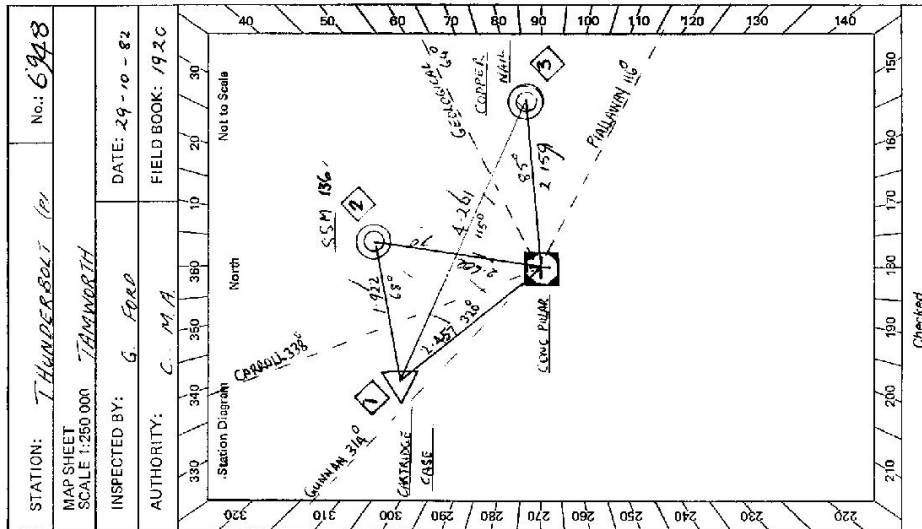
Description:

1. Cleared by lanes bearing 360° *Note: Cross out word or words which do not apply*
2. Mast & Vanes have been painted white & black respectively.
3. The station/pillar was ~~unplaced/not unplaced~~/constructed on 3.8×19.82 dimensions now being: Description of mark ~~SSM, Pillar, Plate~~ should be explicit, e.g. S/Steel Pillar Plate, Steel plug, Brass plug, Belt, G.L. Pipe
Height of mark 1.370 m. ^{above} ~~mark/concrete~~; Mark is 1.570 m. ^{above} ~~G.L.~~
Height of Top Vanes to Top Mark/Pillar plate 1.415 m. Diameter of Vanes (vertical) 0.250 m.
Height of Cairn 0 m. Diameter of Cairn 0 m. Name Plate ~~found/not found~~/placed.
Length of Mast 0 m. (approximate if not unplaced)
4. A ~~CARRILLON CASE~~ set in conc/rock has been placed/found, bearing 340° M from Mast/Plug/Pillar
5. A ~~SSM 136~~ set in conc/rock has been placed/found, bearing 7° M from Mast/Plug/Pillar
6. A ~~COOPER NAVAL~~ set in conc/rock has been placed/found, bearing 85° M from Mast/Plug/Pillar
7. A ~~CONC PILLAR~~ set in conc/rock has been placed/found, bearing 0° M from Mast/Plug/Pillar
8. Action required:

STANDPOINT: CONC PILLAR			STANDPOINT: TRIG PILLAR			
Mark	Direction	Horiz. Distance	Height Difference	Direction	Horiz. Distance	Height Difference
PALLAWAY (C.M.V)	0 00 00		above standpt	0 00 00		above standpt
GUNNAN (P)	191 03 30		above standpt	20 20 30		above standpt
TRIG PILLAR	200 18 50	2.457	above standpt	191 02 10		above standpt
CARRILLON (P)	217 45 50		below standpt	217 45 40		below standpt
SSM 136	244 55 00	2.602	below standpt	308 12 20		below standpt
GEOLOGICAL (P)	308 11 30		above standpt	308 37 20		above standpt
COOPER NAVAL	331 17 30	2.159	below standpt	257 29 20		below standpt

Prepared by: *[Signature]* Checked: *[Signature]* 15/11/22 Noted on U.T.M. Card

SI 2733-1



STATION: THUNDERBOLT (P) No.: 6948
 MAP SHEET SCALE 1:250 000
 INSPECTED BY: G. FORD DATE: 29-10-82
 AUTHORITY: C. M. A. FIELD BOOK: 192C

GEODETIC SURVEY OF A.S.W.

CENTRAL MAPPING AUTHORITY

GEODETIC STATION RECONNAISSANCE and MAINTENANCE REPORT

Description:

1. Cleared by lanes bearing... *368. But for one tree at top*..... from Trig. Mast
2. Mast & Vanes have been painted white & black respectively. ✓
3. The station/pillar was unpiled/not unpiled/constructed on.....19....., dimensions now being:

Description of mark... should be explicit, e.g., S/Steel Pillar Plate, Steel plug, Brass plug, Bolt, G.I. Pipe

Height of mark.....m. above below rock/concrete; Mark is.....m. above below G.L.

Height of Top Vanes to Top Mark/Pillar plate.....m. Diameter of Vanes (vertical).....m.

Height of Cairn.....m. Diameter of Cairn.....m. Name Plate found/~~not found~~/placed.

Length of Mast.....m. (approximate if not unpiled)

4. A. *SSM 136*.....set in conc/~~rock~~ has been ~~placed~~/found, bearing.....°M from Mast/Plug/Pillar

5. A. *CONCRETE 4014*.....set in conc/~~rock~~ has been ~~placed~~/found, bearing.....°M from Mast/Plug/Pillar

6. A. *CONCRETE CASE*.....set in conc/~~rock~~ has been ~~placed~~/found, bearing.....°M from Mast/Plug/Pillar

7. A.....set in conc/~~rock~~ has been placed/~~found~~, bearing.....°M from Mast/Plug/Pillar

8. Action required:.....

STANDPOINT:

STANDPOINT:

Mark	Direction	Horiz. Distance	Height Difference	Mark	Direction	Horiz. Distance	Height Difference
			above standpt				above standpt
			below standpt				below standpt
			above standpt				above standpt
			below standpt				below standpt
			above standpt				above standpt
			below standpt				below standpt
			above standpt				above standpt
			below standpt				below standpt
			above standpt				above standpt
			below standpt				below standpt

Prepared by: *Handwritten signature* 29/12/88

Checked: *Handwritten signature* 8/7/88

Noted on U.I.M. Cont

STATION: *THUNDERBOLT (P)* No.: *6948*
 MAP SHEETS SCALE 1:250 000 SCALE 1:100 000
 INSPECTED BY: *G. FOXD* DATE: *14/4/88*
 AUTHORITY: *C.M.A.* FIELD BOOK: *1949*

Station Diagram
 North
 Not to Scale

Checked: *Handwritten signature* 17/12/88

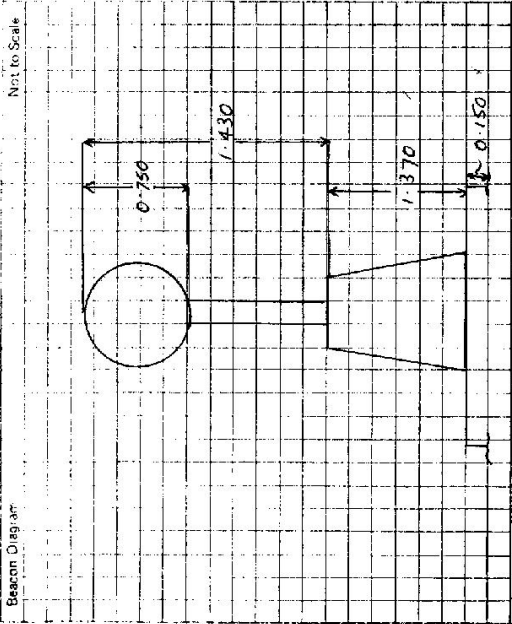
STATION **THUNDERBOLT (P) IS 6948**

Current Occupant:
Address:
Phone:

Owner's Name:
Address:
Phone:

ACCESS

Access Report of /19 was found suitable/unavailable.



This section to be completed by officer constructing pillar.

Original station mark found/not found.

Description of mark:

Original beacon found/not found.

Description of beacon:

Height Top of Vanes to Top Mark m.

Height of mark m. above below rock/conc. G.L.

Diameter of Vanes m. Height of Cairn m.

Original Beacon has/has not been destroyed by me.

Record of Station

Date

GS

STATION THUNDERBOLT TS 6948

Owner's Name: MR. PEB BYRNE
 Address: SPRING MOUNT
 Phone: CARROLL

Current Occupant:
 Address:
 Phone:

ACCESS

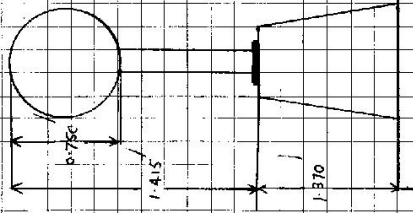
Access Report of 18.12.1985 was found suitable (unsuitable)

* P.O. HAS MOVED 0.47 SOUTH.
 (CLOSER TO BREEZA TOWN OFF)
 14/4/88

- 0.00 CARROLL P.O. HEAD TOWARDS GUNNEBARR
- 1.30 TURN LEFT SIGN "BREEZA"
- 2.70 TURN LEFT SIGN "BREEZA" VIA CLIFTON
- 5.15 TURN LEFT SIGN "KILPHYSIC"
- 12.35 TURN RIGHT
- 12.40 CROSS CREEK
- 13.80 GRID x OWNERS HOUSE - KEEP HOUSE ON LEFT THEN TO SHEARING SHED
- 13.90 IRON GATE - SHEARING SHED ON RIGHT
- 14.00 TANE LEFT FERN
- 14.10 IRON GATE
- 14.20 TURN LEFT T INTERSECTION
- 15.40 IRON GATE TANE RIGHT TARA
- 15.50 CREEK CROSSING
- 16.40 TANE RIGHT FORK
- 17.55 TURN LEFT OFF MAIN TRACK AND HEAD UP RIDGE (YELLOW PAINT)
- 17.82 MAIN WAY THROUGH ACCAS (YELLOW PAINT)
- 17.87 THUNDERBOLT GS

Not to Scale

Beacon Diagram



This section to be completed by officer constructing pillar.

Original station mark found/~~not found~~.

Description of mark: ~~CAST IRON~~ C.A.S.E.

Original beacon found/~~not found~~.

Description of beacon: CAST IRON PILLAR 3.210

Height Top of Vanes to Top Mark: 3.210 m.

Height of mark: 0 m. above G.L. / 0 m. below

Diameter of Vanes: 0.910 m. / Height of Cairn: 1.000 m.

Original Beacon has/~~has not~~ been destroyed by me.

Record of Station

Data