

TS 6777
EVANS HEAD (N)

Department of Lands
Integrate survey of N.S.W.
RECONNAISSANCE and MAINTENANCE REPORT

STATION TS 10285
RICHMOND
Ph: RILEY

Co: RICHMOND
Map Sheet: WOODBURN
Inspected by: P. R. Edwards
Authority:
No: 9539-J-N
Date: 4-12-76
Field Book:

This Trig. Station has been:-
Note: Cross out word or words which do not apply

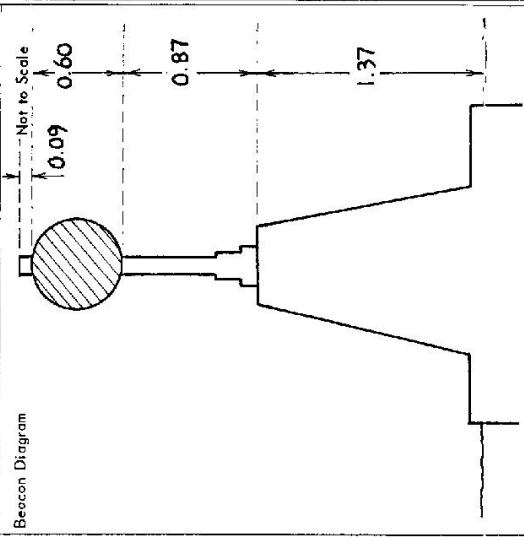
1. Completely cleared to permit 360° vision to surrounding Trigs.
2. Cleared by ~~lines-bearing~~ ~~from Trig. Mast~~
3. Trig. Mast & Vanes have been painted white & black respectively.
4. The Trig. was unpiled/not unpiled, dimensions now being:

Description of mark: **Steel Plate on Conc. Pillar** should be explicit, e.g. Steel plug, Brass plug, Bolt, Concrete Pillar
 Height of mark: m above rock/concrete 1.37 m above G.L.
 Height of Top Vanes to ~~Top Mast~~ Top pillar plate: 1.47 m Diameter of Vanes (vertical): 0.60 m.
 Height of Cairn: m. Diameter of Cairn: m.
 Length of Mast: 1.56 m. (approximate if not unpiled)

5. A. **SSM** set in conc/rock has been placed/46.282 m. bearing 101.0°M from Trig. Mast/pillar
Copper
6. A. **Spike** set in conc/soil has been placed/48.529 m. bearing 330.0°M from Trig. Mast/pillar
7. A. set in conc/soil has been placed/48.529 m. bearing 330.0°M from Trig. Mast/pillar
8. A. set in conc/rock has been placed/48.529 m. bearing 330.0°M from Trig. Mast/pillar

9. Connection: **SSM** to **Spike**: 13.359 m. bearing 309.0°M
10. Connection: to: m. bearing°M
11. Connection: to: m. bearing°M
12. Connection: to: m. bearing°M
13. Diff. Ht. **SSM 20151** is 1.395 m. ~~above~~ ~~below~~ **Pillar Plate**
14. Diff. Ht. **Copper Spike** is 2.005 m. ~~above~~ ~~below~~ **Pillar Plate**
15. Diff. Ht. is m. ~~above~~ ~~below~~
16. Diff. Ht. is m. ~~above~~ ~~below~~

Prepared by: P. R. Edwards Checked: L. J. Griffin



Date	Record of Station
April 76	Pillar erected

STATION TS 6777 EVANS HEAD (P) TS

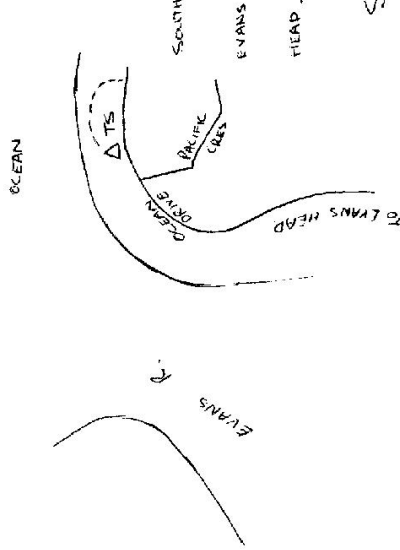
Current Occupant:

Owners Name:

Address:

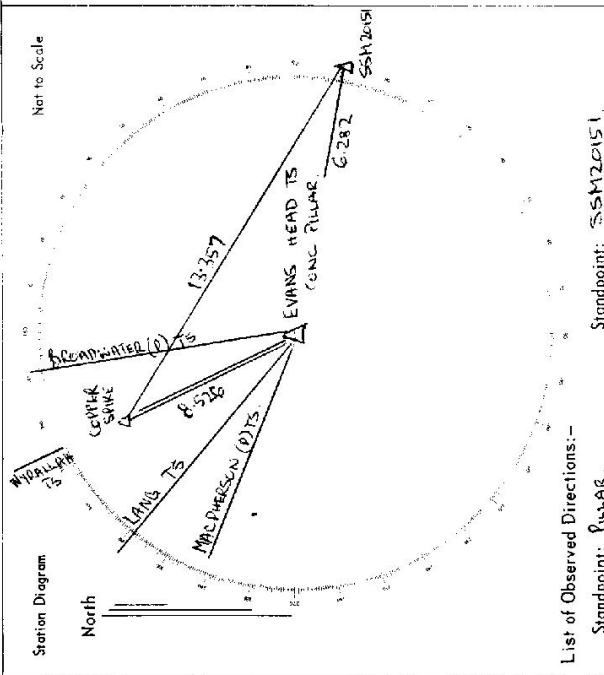
Address:

Access 17-5-1979
 TS IS ON SOUTHERN HEADLAND AT EVANS HEAD.
 FOLLOW OCEAN DRIVE TO TOP OF HEADLAND



See D.P.
4017Z

Net to Scale



List of Observed Directions:-

Station	Direction	Station	Direction
SSM 20151	161°30'51.4"	PILLAR	0°00'00"
COOPER SPIKE	333°18'36.8"	COOPER SPIKE	330°07'04"
BROADWATER TS	352°00'00"		
MADDERSON TS	291°14'55.3"		
KANG TS	309°49'42.3"		
MAYALLA TS	333°40'27.5"		

CENTRAL MAPPING AUTHORITY

GEODETIC SURVEY OF U.S.W.

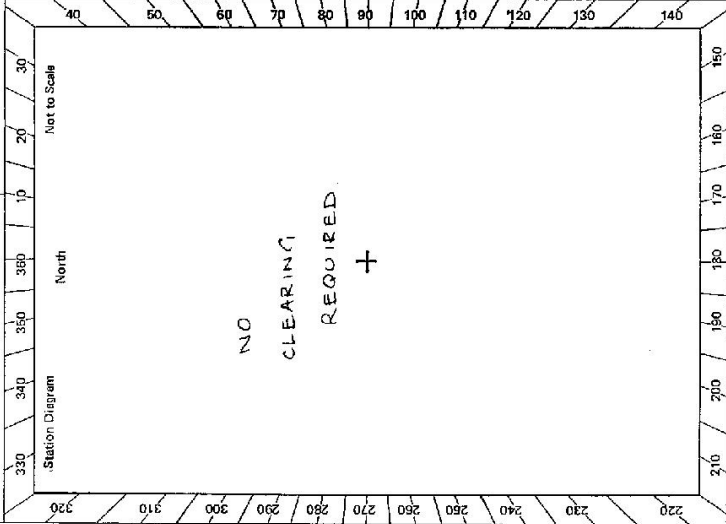
GEODETIC STATION RECONNAISSANCE and MAINTENANCE REPORT

STATION: EVANS HEAD No.: 6777

MAP SHEET SCALE 1:250 000 MACLEAN

INSPECTED BY: D. KINLYSIDE DATE: 21. 4. 80

AUTHORITY: C.M.A. FIELD BOOK: 1653



Description: 360° Note: Cross out word or words which do not apply

1. Cleared by lanes bearing from Trig. Mast

2. Mast & Vanes have been painted white & black respectively.

3. The station/pillar was ~~unplaced~~ constructed on dimensions new being:

Description of mark/s/pillar/plate should be explicit, e.g. S/Steel Pillar Plate, Steel plug, Brass plug, Bolt, G.I. Pipe

Height of mark m. above below rock/concrete; Mark is m. above below G.L.

Height of Top Vanes to Top Mark/Pillar plate m. Diameter of Vanes (vertical) m.

Height of Cairn m. Diameter of Cairn m. Name Plate found/~~not found~~/placed.

Length of Mast m. (approximate if not unplaced)

4. A S.S.M. set in conc/reek has been placed/found, bearing M from ~~base~~/Pillar

5. A C.V. Nail set in conc/reek has been placed/found, bearing M from ~~base~~/Pillar

6. A set in conc/rock has been placed/found, bearing M from Mast/Plug/Pillar

7. A set in conc/rock has been placed/found, bearing M from Mast/Plug/Pillar

8. Action required: Vane stays replaced. Replenishment of vanes need painting

STANDPOINT:

Mark	Direction	Horiz. Distance	Height Difference	Mark	Direction	Horiz. Distance	Height Difference
EGGENTRAL							
OLIVE GAP	hill	224m	above standpt.				above standpt.
MOONIMBA	hill	262m	above standpt.				above standpt.
LANG	Reservoir	309m	below				below
BROADWATER	Pillar	351m	above standpt.				above standpt.
OT WERS			below				below
Mc PHELSON	Pillar	250m	above standpt.				above standpt.
CHARTS WORTH	hill	217m	below				below

Prepared by: D. KinlYSide

Checked: P. Hadden

Checked

Noted on U.T.M. Card

S: 2733-1

CENTRAL MAPPING AUTHORITY

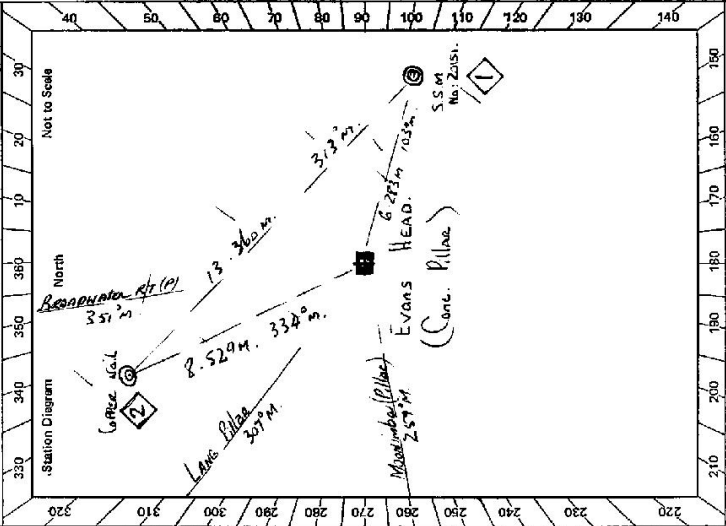
GEODETIC SURVEY OF N.S.W.
 GEODETIC STATION RECONNAISSANCE and MAINTENANCE REPORT

STATION: **EVANS HEAD (Pillar)** No.: **6777**

MAP SHEET: **MacLean**

INSPECTED BY: **DAVID J. KAUF** DATE: **19 February 2022**

AUTHORITY: **C.M.A.** FIELD BOOK: **1827**

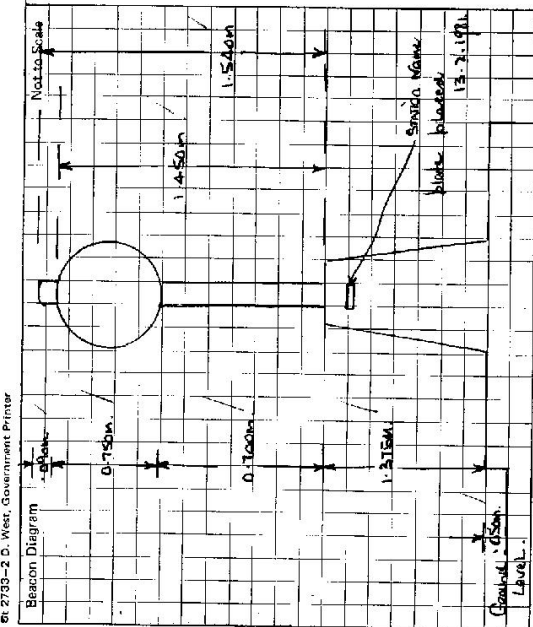


- Description:
- Cleared by fence-bearing... **360°** from Trig. Mast Pillar. Station is surrounded by Central Scrub & heath, **360°** vision over this scrub. Mast & Vanes have been painted white & black respectively. Found.
 - The station/pillar was ~~constructed on~~ constructed on **concrete**. **19.8m** dimensions now being: Description of marks **S.S.M. No. 2015** should be explicit, e.g. S/Steel Pillar Plate, Steel plug, Brass plug, Bolt, G.I. Pipe Height of mark... **3.75m** above ~~mark~~ **concrete**; Mark is **1.475m** above ~~mark~~ **G.L.** Height of Top Vanes to Top ~~Mark~~ Pillar plate **1.45m**. Diameter of Vanes (vertical) **0.150m**. Height of Cairn... **1.540m**. Diameter of Cairn... **13.2m**. Length of Mast... **1.540m** (~~approximate~~).
 - S.S.M. No. 2015** set in conc/rock has been ~~placed~~ found, bearing... **103.0°** from ~~Moonimba~~ Pillar
 - Cape Nail** set in conc/rock has been ~~placed~~ found, bearing... **334.0°** from ~~Moonimba~~ Pillar
 - A** set in conc/rock has been placed/ found, bearing... **0°** from Mast/Plug/Pillar
 - A** set in conc/rock has been placed/ found, bearing... **0°** from Mast/Plug/Pillar
 - Action required: **Concrete observation Pillar** STANDPOINT: **S.S.M. No. 2015**

Mark	Direction	Horiz. Distance	Height Difference	Direction	Horiz. Distance	Height Difference
Lang (Pillar)	0 00 00	307	above standpt	0 00 00	307	above standpt
Cape Nail	23 29 33	252.9	above standpt	1 49 56	334	below standpt
Broadwater RT (P)	42 11 34	351	above standpt	42 11 05	351	above standpt
S.S.M.	151 42 34	6.273	above standpt	313 18 19	6.273	above standpt
Moonimba (Pillar)	313 16 42	334	above standpt	331 43 20	6.272	above standpt
			below standpt			below
			below standpt			below

Prepared by: **D.J. Kauf** Checked: **D.J. Kauf** Noted on U.T.M. Card

61-2793-2-D, West, Government Printer



STATION **Evans Head (Pillar.) TS 6777**

Owner's Name: **CROWN LAND**
 Address:
 Phone:

Current Occupant:
 Address:
 Phone:

ACCESS
 Access Report of 7/11/19 shows found suitable (suitable).

FEATURE.
Evans Head Post Office, head South
Veer Right.
Cross Bridge.
TURN LEFT follow Ocean Drive!
PASS EVANS HEAD ROAD ON R.H.S.
TAKE RIGHT FORK
TURN LEFT onto gravel road.
EVANS HEAD ~ Concrete observation pillar.

kms
 0.0
 0.35
 0.7
 0.9
 1.5
 2.0
 2.4
 2.5

This section to be completed by officer constructing pillar.

Original station mark found/~~was~~ **Concrete Pillar found Placed,**

Description of mark: **S.S.M No. 20151 & Copper nail**

Original beacon found/~~was~~ **End Cap broken, Vanes replaced.**

Description of beacon: **PVC MIXER - Gal Vanes**

Height Top of Vanes to Top mark: **1.470** m. Length mast HGs **1.56m**

Height of mark: m. above rock/conc m. above G.L.
 m. below

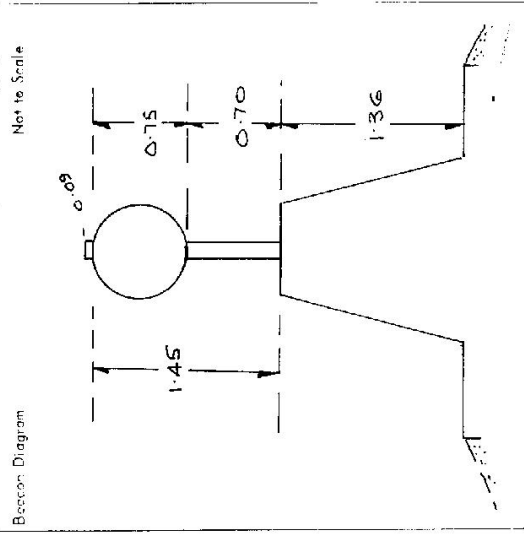
Diameter of Vanes: **600** mm. Height of Cairn: m.

Original Beacon has/~~was~~ **been replaced** by mo.

Date	Record of Station

STATION TS **10263** EVANS HEAD (P)
 Co: CLARENCE | Ph: RILEY
 Map Sheet: WOODBURN (1:4000) No: 5535-1-N
 Inspected by: N. L. HURCUM Date: 31/3/81
 Authority Survey Central Branch Field Book: 1744/19

Department of Lands
 This Trig. Station has been:-
 1. Completely cleared to permit 360° vision to surrounding Trigs. ✓
 2. Cleared by James Beating
 3. Trig. Mast & Vanes have been painted white & black respectively. ✓
 4. The Trig. was unpilled/~~not unpilled~~, dimensions now being:



Description of mark... **Concrete Pillar**... should be explicit, e.g. Steel plug, Brass plug, Bolt, Concrete Pillar
 Height of mark... **1.36** m above ~~concrete~~ **G.L.**
 Height of Top Vanes to ~~Top Mast~~ Top pillar plate... **1.45** m Diameter of Vanes (vertical) **0.75** m.
 Height of ~~Crown~~ **Diameter of Crown**... m
 Length of Mast... **1.54** m. (approximate if not unpilled)
 5. A. **SSM** set in conc/~~soil~~ has been placed/fd **2.84** m. bearing... **104** °M from Trig. Mast/pillar
 6. A. **Copper Spike** set in conc/~~soil~~ has been placed/fd **8.530** m. bearing... **336** °M from Trig. Mast/pillar
 7. A. set in conc/soil has been placed/fd... m. bearing... °M from Trig. Mast/pillar
 8. A. set in conc/rock has been placed/fd... m. bearing... °M from Trig. Mast/pillar
 9. Connection to... m. bearing... °M
 10. Connection to... m. bearing... °M
 11. Connection to... m. bearing... °M
 12. Connection to... m. bearing... °M
 13. Diff. Ht. **SSM 20151** is **1.400** m. ~~below~~ **Pillar Plate (Levelled)**
 14. Diff. Ht. **Copper Spike** is **2.006** m. ~~below~~ **Pillar Plate (Levelled)**
 15. Diff. Ht. is... m. above
 16. Diff. Ht. is... m. above

Beacon Diagram
 Not to Scale

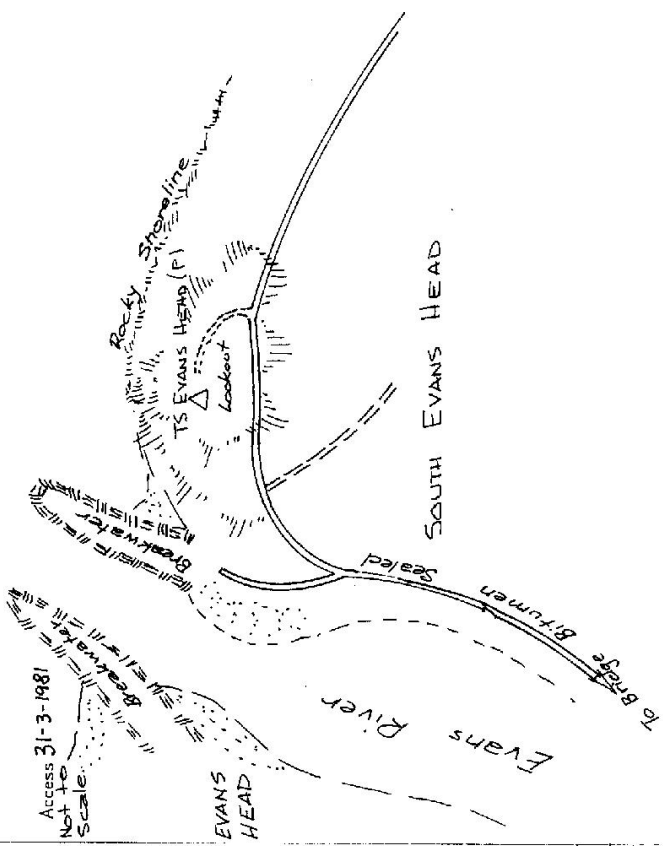
Date	Record of Station
31/3/81	Connections by N. L. Hurcum.

Prepared by: **N. L. Hurcum**
 Checked: **N. L. Hurcum**

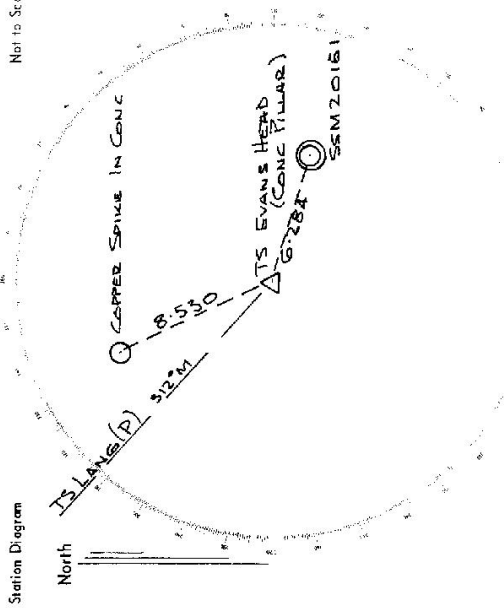
STATION TS 10263 6777 EVANS HEAD (P)

Owners Name: TS 10263 Public Reserve Current Occupant:

Address: MAP SHEET 1: 4000 - 3677-9



Not to Scale



List of Observed Directions:- From FB01 1744/19

Standpoint: PILLAR PLATE		Standpoint:	
Station	Direction	Station	Direction
TS... LANGS (P)	312 00 00		
COPPER SPIKE IN CONC	335 32 46		
SSM 20151	103 42 18		
Station	Direction	Station	Direction