

GEODETTIC SURVEY OF M.S.W.

CENTRAL MAPPING AUTHORITY

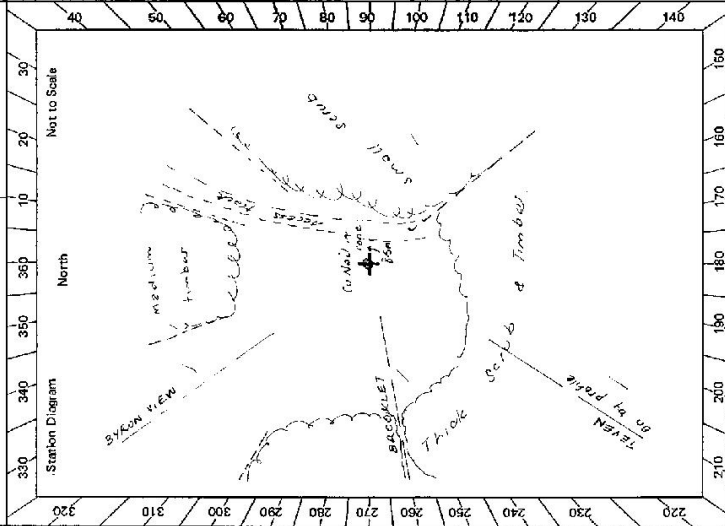
GEODETTIC STATION RECONNAISSANCE and MAINTENANCE REPORT

STATION: NEWRYBAR TS No.: 6649

MAP SHEET SCALE 1:750 000 TWEED HEADS

INSPECTED BY: D. KINLYSIDE DATE: 25.9.80

AUTHORITY: C.M.A. FIELD BOOK: 1813



- Description:
- Cleared by lanes bearing..... *Note: Cross out word or words which do not apply*
 - Mast & Vanes have been painted white & black respectively. *established*
 - The station/pillar was unplaced/not unplaced/constructed on..... *19.8.0., dimensions now being:*
- Description of mark: *Cy Nail in conc.* should be explicit, e.g., S/Steel Pillar Plate, Steel plug, Brass plug, Bolt, G.I. Pipe
- Height of mark..... m. *above* rock/concrete; Mark is..... m. *above* G.L.
- Height of Top Vanes to Top Mark/Pillar plate..... m. Diameter of Vanes (vertical)..... m.
- Height of Cairn..... m. Diameter of Cairn..... m. Name Plate found/not found/placed.
- Length of Mast..... m. (approximate if not unplaced)
- A..... set in conc/rock has been placed/found, bearing.....° M from Mast/Plug/Pillar
 - A..... set in conc/rock has been placed/found, bearing.....° M from Mast/Plug/Pillar
 - A..... set in conc/rock has been placed/found, bearing.....° M from Mast/Plug/Pillar
 - A..... set in conc/rock has been placed/found, bearing.....° M from Mast/Plug/Pillar
8. Action required: *Clearing..... Conc. pillar..... in grass mark.....*

STANDPOINT: *Cy Nail in Conc.*

Mark	Direction	Horiz. Distance	Height Difference	Mark	Direction	Horiz. Distance	Height Difference
REQUIRED							
BROOKLET	260° M	G.S. /	above standpt				above standpt
TEVEN	on by <i>refile at 212° M</i>		above standpt				above standpt
BROKEN HEAD	Destroyed		below standpt				below standpt
OTHERS			below standpt				below standpt
BYRON VIEW	323° M	G.S. /	above standpt				above standpt
			below standpt				below standpt

Prepared by: *D. Kinlyside* Checked: *J. Fleming* Noted on U.T.M. Card

GEODETIC SURVEY OF N.S.W.

CENTRAL MAPPING AUTHORITY

GEODETIC STATION RECONNAISSANCE and MAINTENANCE REPORT

Description:

1. Cleared by lances bearing 211° ~~221~~ 257° ~~267~~ 292° ~~335~~ 16° ~~77~~ from Trig. Mast
 Note: Cross out word or words which do not apply
2. Mast & Vanes have been painted white & black respectively. ✓
3. The ~~station~~ pillar was ~~replaced~~ ~~reconstructed~~ / constructed on 2.12 ~~19.80~~ m, dimensions now being:
 Description of mark: ~~the~~ ~~lance~~ ~~lances~~ should be explicit, e.g., S/Steel Pillar Plate, Steel plug, Brass plug, Bolt, G.I. Pipe
 Height of mark: 1.85 m. above ~~mark~~ ~~concrete~~; Mark is 1.53 m. above G.L.
 Height of Top Vanes to Top ~~Mark~~ / Pillar plate 1.47 m. Diameter of Vanes (vertical) 0.150 m.
 Height of Cairn: 0 m. Diameter of Cairn: 0 m. Name Plate ~~found~~ / ~~replaced~~ / ~~placed~~ / placed.
 Length of Mast: 0 m. (approximate if not unipled)
4. A. ~~Copper Nail~~ set in conc/rock has been ~~placed~~ / found, bearing 387° M from ~~lance~~ / ~~lances~~ / Pillar
5. A. ~~G.I. Pipe~~ set in conc/rock has been placed / ~~found~~, bearing 351° M from ~~lance~~ / ~~lances~~ / Pillar
6. A. set in conc/rock has been placed / found, bearing 0° M from Mast / Plug / Pillar
7. A. set in conc/rock has been placed / found, bearing 0° M from Mast / Plug / Pillar
8. Action required: 0 m from Mast / Plug / Pillar

STANDPOINT: Conc obs ~~found~~

STANDPOINT: Copper Nail in Conc

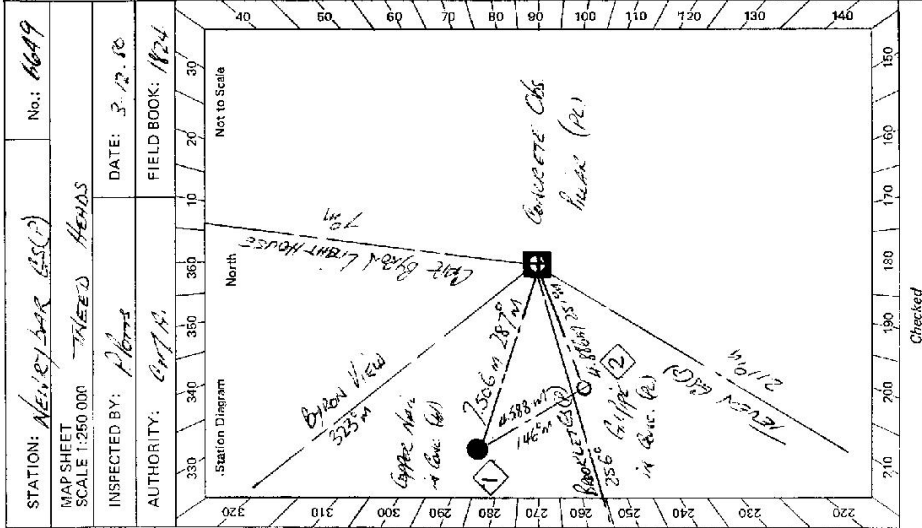
Mark	Direction	Horiz. Distance	Height Difference	Direction	Horiz. Distance	Height Difference
BROCKET GCP	0 00 00		above standpt.	0 00 00		above standpt.
Copper Nail	35 38 00	7.506	above standpt.	0 00 00		above standpt.
BYRON VIEW LIGHTHOUSE	65 2 20		below	16 15 0		below
BYRON LIGHTHOUSE	110 09 30		below	16 13 02		below
TEVEN G.S.(1)	35 40 20		above standpt.	20 59 30	7.506	above standpt.
G.I. PIPE	35 45 40	4.816	below	20 59 02	4.158	below
			below	35 40 00		below

Prepared by: PANTS 16 12 80

Checked:

Noted on U.T.M. Card

St 2738-1



Checked

STATION: NEILBY BAR G.S.(1) No.: 6649

MAP SHEET SCALE 1:280,000

INSPECTED BY: PANTS DATE: 3.12.80

AUTHORITY: C.M.A. FIELD BOOK: 1824

