

CENTRAL MAPPING AUTHORITY  
Department of Lands

Trigonometrical Survey of N.S.W.

RECONNAISSANCE and MAINTENANCE REPORT

This Trig. Station has been:-

Note: Cross out word or words which do not apply

1. Completely cleared to permit 360° vision to surrounding Trigs. ✓
2. Cleared by lanes bearing ..... from Trig. Mast
3. Trig. Mast & Vanes have been painted white & black respectively.
4. The Trig. was unpiled/~~not supported~~, dimensions now being:

Description of mark ~~Do not have to write on this form. It should be explicit, e.g. Steel plug, Brass plug, Bolt, G.I. Pipe~~

Height of mark ..... m <sup>above</sup> / <sub>below</sub> rock/concrete ..... m <sup>above</sup> / <sub>below</sub> G.L.  
 Height of Top Vanes to Top Mark ..... m. Diameter of Vanes (vertical) ..... m.  
 Height of Cairn ..... m. Diameter of Cairn ..... m.

- Length of Mast ..... m. (approximate if not unpiled)
5. A. .... set in conc/rock has been placed ..... m. bearing ..... °M from Trig. Mast
  6. A. .... set in conc/soil has been placed ..... m. bearing ..... °M from Trig. Mast
  7. A. .... set in conc/soil has been placed ..... m. bearing ..... °M from Trig. Mast
  8. A. .... set in conc/rock has been placed ..... m. bearing ..... °M from Trig. Mast

9. Connection ..... to ..... m. bearing ..... °M
10. Connection ..... to ..... m. bearing ..... °M
11. Connection ..... to ..... m. bearing ..... °M
12. Connection ..... to ..... m. bearing ..... °M
13. Diff. Ht. .... is ..... m. <sup>above</sup> / <sub>below</sub>
14. Diff. Ht. .... is ..... m. <sup>above</sup> / <sub>below</sub>
15. Diff. Ht. .... is ..... m. <sup>above</sup> / <sub>below</sub>
16. Diff. Ht. .... is ..... m. <sup>above</sup> / <sub>below</sub>

Prepared by: *M.L. Macerion*

Checked:

Noted on U.T.M. Card

STATION CMA 7-002

7-002  
E.C.C.E. TS 6467

Co: \_\_\_\_\_ Ph: \_\_\_\_\_

Map Sheet: *GAFTON*

Nat: *S438*

Inspected by: *M.L. Macerion*

Date: *21-7-77*

Authority: \_\_\_\_\_

Field Book: *S580*

Beacon Diagram

Net to Scale

*CMA 7-002 (PM 32715)*

*APPROX 37m FROM DRILL HOLE ON RES.*

Date

Record of Station

*ROUNDER SIZE FOR RECONNAISSANCE*

Checked



CENTRAL MAPPING AUTHORITY

GEODETIC SURVEY OF M.S.W.  
 GEODETIC STATION RECONNAISSANCE and MAINTENANCE REPORT

Description:

- Created by lances bearing..... Note: Cross out word or words which do not apply
- Mast & Vanes have been painted white & black respectively. .... from Trig. Mast
- The station/pillar was unpiled/not unpiled/constructed on..... 19....., dimensions now being:  
 Description of mark.....  
 Drill hole in conc platform  
 Description of mark..... should be explicit, e.g., S/Steel Pillar Plate, Steel plug, Brass plug, Bolt, G.I. Pipe  
 Height of mark.....m, above rock/concrete; Mark is.....m, below G.L.  
 Height of Top Vanes to Top Mark/Pillar plate .....m. Diameter of Vanes (vertical).....m.  
 Height of Cairn.....m. Diameter of Cairn.....m. Name Plate found/not found/placed.  
 Length of Mast.....m. (approximate if not unpiled)
- A.....set in conc/rock has been placed/found, bearing.....° M from Mast/Plug/Pillar
- A.....set in conc/rock has been placed/found, bearing.....° M from Mast/Plug/Pillar
- A.....set in conc/rock has been placed/found, bearing.....° M from Mast/Plug/Pillar
- A.....set in conc/rock has been placed/found, bearing.....° M from Mast/Plug/Pillar
- Action required:.....

STANDPOINT:

Trigs	Mark	Grid Direction	Horiz. Distance	Height Difference	Mark	Grid Direction	Horiz. Distance	Height Difference
				above standpt. below				above standpt. below
Pineales	7	7	9.5	above standpt.	Hills	114	23.4	above standpt.
Pine Brook	88	88	22.4	above standpt.	Pillar Valley	188	38.8	above standpt.
Browns Knob	147	147	35.9	above standpt.	Kawkanore	198	32.6	above standpt.
Glenugie	148	148	25.2	above standpt.	Wards Point	210	30.0	above standpt.
Rockview	218	218	27.7	above standpt.	Blairland	226	22.5	above standpt.
Ramornie	274	274	18.4	above standpt.	Chambigne	306	20.9	above standpt.
				below	Caponahurst			below

Prepared by:

Checked:

Noted on U.T.M. Card

St 2733-1

STATION: **EDGECOMBE ECCE.** TS 6467 No. ~~333-1~~

MAP SHEET SCALE 1:250 000 **GRAFTON**

INSPECTED BY: **J. FANNING** DATE: **3rd August 79**

AUTHORITY: **CMAA** FIELD BOOK:

Station Diagram

North

North to Scale

**EDGECOMBE (AGENCY CMA7-002)**

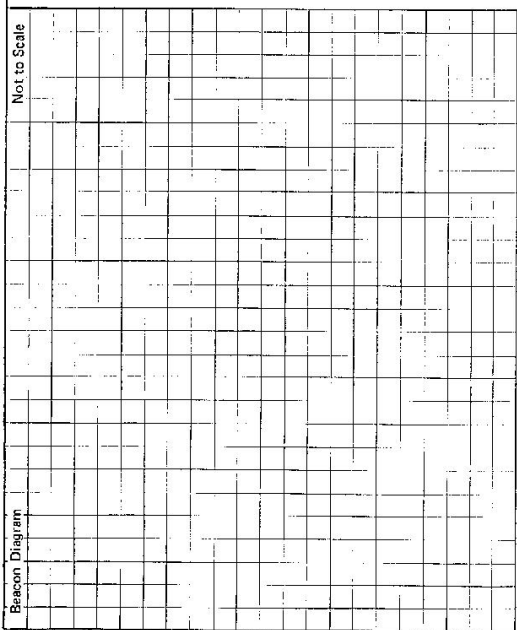
**APPROX. 37m FROM BULL HOLE ON RES.**

Checked

STATION **EDGECLIFFE TS 6467**

Owner's Name: **Grafton City Council**  
 Address: .....  
 Phone: .....  
 Current Occupant: **Approved to erect pillar granted in writing (p.c. 55/1)**  
 Address: .....  
 Phone: .....

Access Report at **3.8.19** was found suitable/unsuitable.  
**ACCESS**  
**Water reservoir at Junction Hill approx 7 kms North of Grafton on Parino road**



This section to be completed by officer constructing pillar.  
 Original station mark found/not found.  
 Description of mark: .....  
 Original beacon found/not found.  
 Description of beacon: .....  
 Height Top of Vanes to Top Mark .....m.  
 Height of mark .....m. above rock/cont. below G.L.  
 Diameter of Vanes .....m. Height of Cairn .....m.  
 Original Beacon has/has not been destroyed by me.

Date	Record of Station

CENTRAL MAPPING AUTHORITY

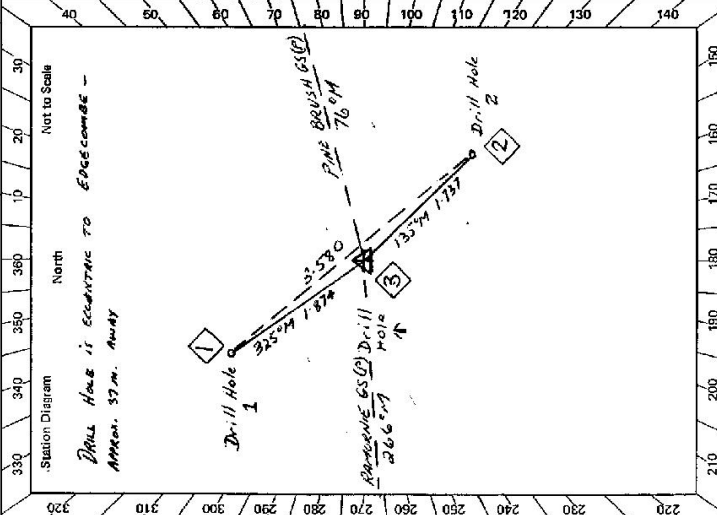
GEODETTIC STATION RECONNAISSANCE and MAINTENANCE REPORT

STATION: **EDGE COMBE GS 624** No.: **15 6467**

MAP SHEET SCALE 1:250 000

INSPECTED BY: **D SHANBOLT** DATE: **6/19/20**

AUTHORITY: **CMAA** FIELD BOOK: **1680**



- Description:
- Cleared by lanes bearing **360°** from Trig. Mast
  - Mast & Vanes have been painted white & black respectively.
  - The station/pillar was unpiled/not unpiled/constructed on **Drill Hole 1**, dimensions now being:
    - Description of mark: **Drill Hole 1** on **Concrete Pylon** on **Water Reservoir**
    - Height of mark: **above G.L.**
    - Height of Top Vanes to Top Mark/Pillar plate: **0.010** m. Diameter of Vanes (vertical): **0.010** m.
    - Height of Cairn: **0.010** m. Diameter of Cairn: **0.010** m. Name Plate found/not found/placed.
    - Length of Mast: **0.010** m. (approximate if not unpiled)
  - A. Drill Hole 1** in **Con Wall of Res.** set in **concrete** has been placed/removed, bearing **325.74°** M from **Mast/Plug/Pillar** Drill Hole 1
  - A. Drill Hole 2** in **Con Wall of Res.** set in **concrete** has been placed/removed, bearing **135°** M from **Mast/Plug/Pillar** Drill Hole 1
  - A.** set in **conc/rock** has been placed/found, bearing **3.170°** M from **Mast/Plug/Pillar**
  - A.** set in **conc/rock** has been placed/found, bearing **13.74°** M from **Mast/Plug/Pillar**
  - Action required: **Drill Hole 1**

STANDPOINT:				STANDPOINT:			
Mark	Direction	Horiz. Distance	Height Difference	Mark	Direction	Horiz. Distance	Height Difference
<b>RAMORNE GS (P)</b>	<b>325 74</b>	<b>187°</b>	<b>above standpt.</b>				<b>above standpt.</b>
<b>DRILL HOLE 1</b>	<b>56 44</b>	<b>015</b>	<b>above standpt.</b>				<b>above standpt.</b>
<b>FINE BRUSH GS (P)</b>	<b>174 25</b>	<b>52</b>	<b>above standpt.</b>				<b>above standpt.</b>
<b>DRILL HOLE 2</b>	<b>222 11</b>	<b>133</b>	<b>below standpt.</b>				<b>below standpt.</b>
			<b>above standpt.</b>				<b>above standpt.</b>
			<b>below</b>				<b>below</b>

Prepared by: **J.C. SHANBOLT** Checked: **[Signature]** Noted on U.T.M. Card

GEODETTIC SURVEY OF N.S.W.

CENTRAL MAPPING AUTHORITY

GEODETTIC STATION RECONNAISSANCE and MAINTENANCE REPORT

Description: *Note: Cross out word or words which do not apply*

1. Cleared by Janes bearing..... from Trig. Mast
2. Mast & Vanes have been painted white & black respectively.
3. The station/pillar was unpiled/not unpiled/constructed on.....19....., dimensions now being:  
Description of mark.....should be explicit, e.g., S/Steel Pillar Plate, Steel plug, Brass plug, Bolt, G.I. Pipe  
Height of mark.....m. <sup>above</sup>/<sub>below</sub> rock/concrete; Mark is.....m. <sup>above</sup>/<sub>below</sub> G.L.  
Height of Top Vanes to Top Mark/Pillar plate.....m. Diameter of Vanes (vertical).....m.  
Height of Cairn.....m. Diameter of Cairn.....m. Name Plate found/not found/placed.  
Length of Mast.....m. (approximate if not unpiled)
4. A.....set in conc/rock has been placed/found, bearing.....° M from Mast/Plug/Pillar
5. A.....set in conc/rock has been placed/found, bearing.....° M from Mast/Plug/Pillar
6. A.....set in conc/rock has been placed/found, bearing.....° M from Mast/Plug/Pillar
7. A.....set in conc/rock has been placed/found, bearing.....° M from Mast/Plug/Pillar
8. Action required:.....

STANDPOINT:

STANDPOINT:

Mark	Direction	Horiz. Distance	Height Difference	Mark	Direction	Horiz. Distance	Height Difference
			above standpt				above standpt
			below				below
			above standpt				above standpt
			below				below
			above standpt				above standpt
			below				below
			above standpt				above standpt
			below				below
			above standpt				above standpt
			below				below
			above standpt				above standpt
			below				below

Prepared by:

Checked:

Noted on U.T.M. Card

Checked

STATION: *Frangcombe GS (S)* No: *IS 6467*

MAP SHEET SCALE 1:250 000

INSPECTED BY: *D. Stubbins* DATE: *13/10/79*

AUTHORITY: *CMR* FIELD BOOK: *1680*

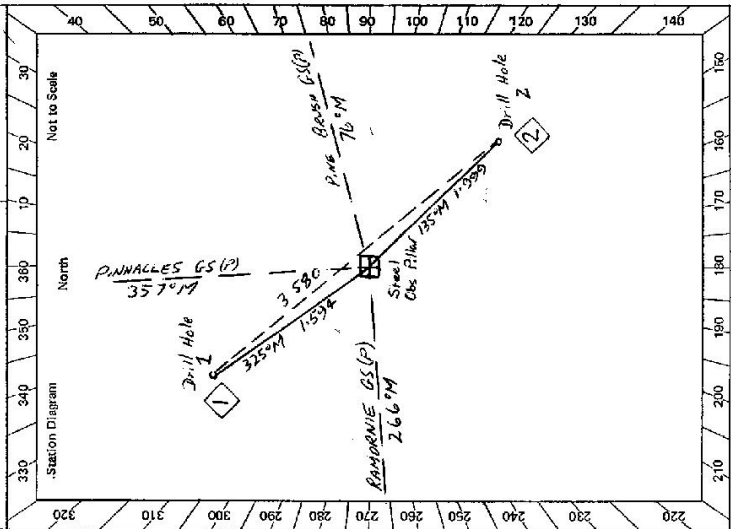
Station Diagram

CENTRAL MAPPING AUTHORITY

GEODETIC STATION RECONNAISSANCE and MAINTENANCE REPORT

Description:  
 1. Cleared by lanes bearing 360° Note: Cross out word or words which do not apply  
 2. Mast & Vanes have been painted white & black respectively.  
 3. The station/pillar was ~~unplaced~~ placed on 10.5m Sp. 19.7m dimensions now being:  
 Description of mark: Steel Pillar should be explicit, e.g., S/Steel Pillar Plate, Steel plug, Brass plug, Bolt, G.I. Pipe  
 Height of mark: 1.375m above ~~rock~~ concrete reservoir  
 Height of Top Vanes to Top Mark/Pillar plate: 1.440m Diameter of Vanes (vertical): 0.735m  
 Height of Cairn: 0m Diameter of Cairn: 0m Name Plate found/~~not found~~/placed:  
 Length of Mast: 1.520m (approximate if not unplied)  
 4. A Drill Hole 1 in Conc. Wall of B.  
 5. A Drill Hole 2 in Conc. Wall of C.  
 6. A set in conc/rock has been placed/found, bearing 335° M from Mast/Plug/Pillar  
 7. A set in conc/rock has been placed/found, bearing 135° M from Mast/Plug/Pillar  
 8. Action required: set in conc/rock has been placed/found, bearing 0° M from Mast/Plug/Pillar  
set in conc/rock has been placed/found, bearing 0° M from Mast/Plug/Pillar

STATION: EDGECOMBE GS (P) No.: 6467  
 MAP SHEET SCALE 1:250 000 GRAFTON  
 INSPECTED BY: D SHADBOLT DATE: 13/10/70  
 AUTHORITY: CMA FIELD BOOK: 1680



Mark	Direction	Horiz. Distance	Height Difference	Mark	Direction	Horiz. Distance	Height Difference
RANORWIE GS (P)	357	3.580	above standpt				above standpt
DRILL HOLE 1	56	08 10	1.481				above standpt
PINNACLES GS (P)	92	28 40					above standpt
PINE BRASS GS (P)	174	26 25					above standpt
DRILL HOLE 2	224	24 15	1.478				below standpt
							above standpt
							below standpt

Prepared by: [Signature] Checked: [Signature]  
 Noted on U.T.M. Card

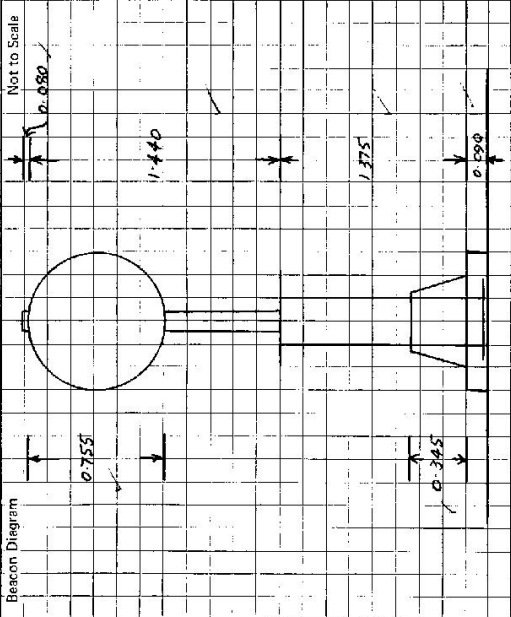
STATION EDGECOMBE CS (P) TS-6467

Owner's Name: Spencerwood Shire Council Current Occupant: .....  
 Address: 22, Beech St, Grafton NSW 2460 Address: .....  
 Phone: ..... Phone: .....

ACCESS

Access Report of: 21.1.1979 was found suitable/unsuitable.

*Steel Obs Plate placed on concrete platform  
on Water Reservoir at Junction Hill*



This section to be completed by officer constructing pillar.

Original station mark found/~~not found~~.

Description of mark: Drill hole in conc. Platform on Water Reservoir

~~Original beacon found/not found.~~

Description of beacon: .....

Height Top of Vanes to Top Mark: .....m.

Height of mark: .....m. above G.L.  
 Below

Diameter of Vanes .....m. Height of Cairn .....m.

Original Beacon has/has not been destroyed by me.

Date	Record of Station