

CENTRAL MAPPING AUTHORITY

GEODETIC SURVEY OF M.S.B. GEODETIC STATION RECONNAISSANCE and MAINTENANCE REPORT

STATION: GOODOOGA G.S. No.: 6220

MAP SHEET SCALE 1:250 000

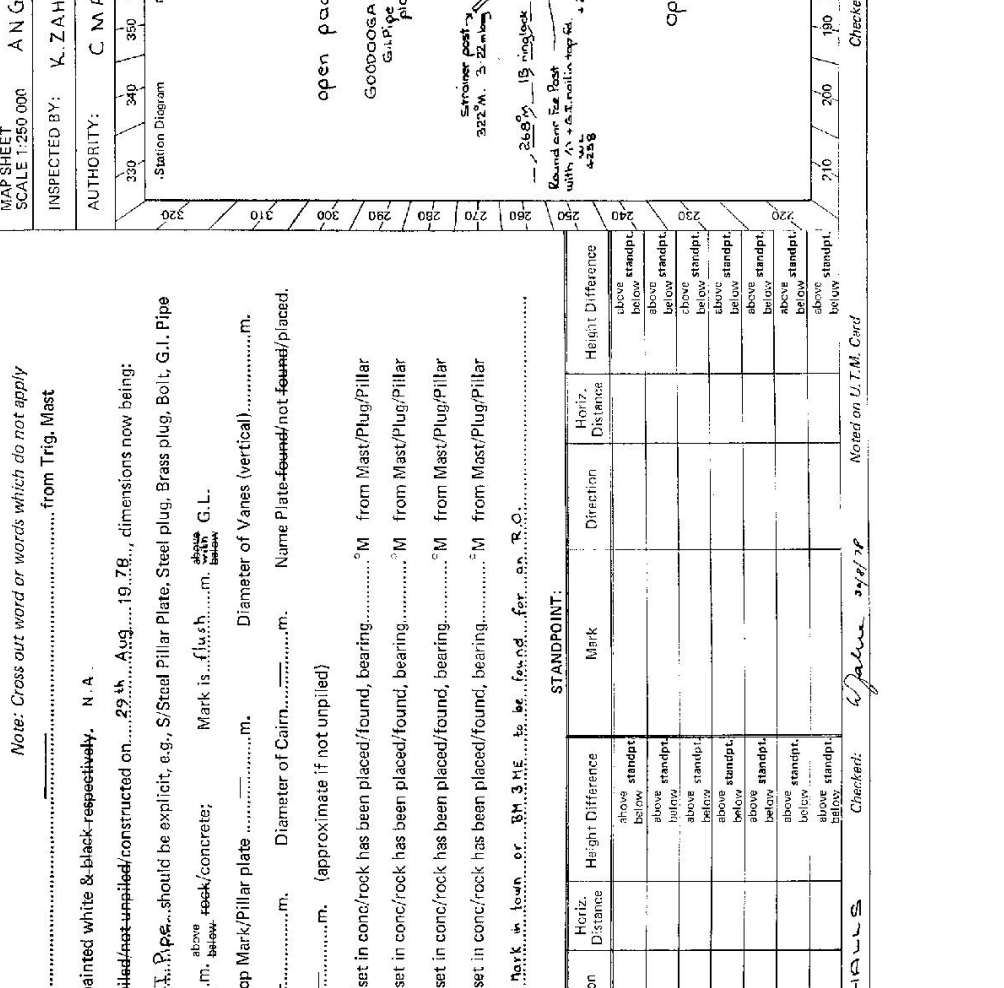
INSPECTED BY: K. ZAHRA

DATE: 25-8-78

AUTHORITY: C M A

FIELD BOOK: 157215

- Description:
- Note: Cross out word or words which do not apply
- Cleared by lanes bearing..... from Trig. Mast
 - Mast & Vanes have been painted white & black-respectively. N. A.
 - The station/pillar was applied/not applied/constructed on..... 29th Aug..... 1978..... dimensions now being:
 Description of mark..... G.I. Pipe..... should be explicit, e.g., S/Steel Pillar Plate, Steel plug, Brass plug, Bolt, G.I. Pipe
 Height of mark..... 0.93..... m. above ^{below} rock/concrete; Mark is ^{above} ~~below~~ G.L.
 Height of Top Vanes to Top Mark/Pillar plate m. Diameter of Vanes (vertical)..... m.
 Height of Cairn..... m. Diameter of Cairn..... m. Name Plate-found/not-found/placed.
 Length of Mast..... m. (approximate if not unplied)
 - A..... set in conc/rock has been placed /found, bearing.....° M from Mast/Plug/Pillar
 - A..... set in conc/rock has been placed /found, bearing.....° M from Mast/Plug/Pillar
 - A..... set in conc/rock has been placed /found, bearing.....° M from Mast/Plug/Pillar
 - A..... set in conc/rock has been placed /found, bearing.....° M from Mast/Plug/Pillar
 - Action required: A Bench mark to be set in conc/rock for..... R.O.....



STANDPOINT:

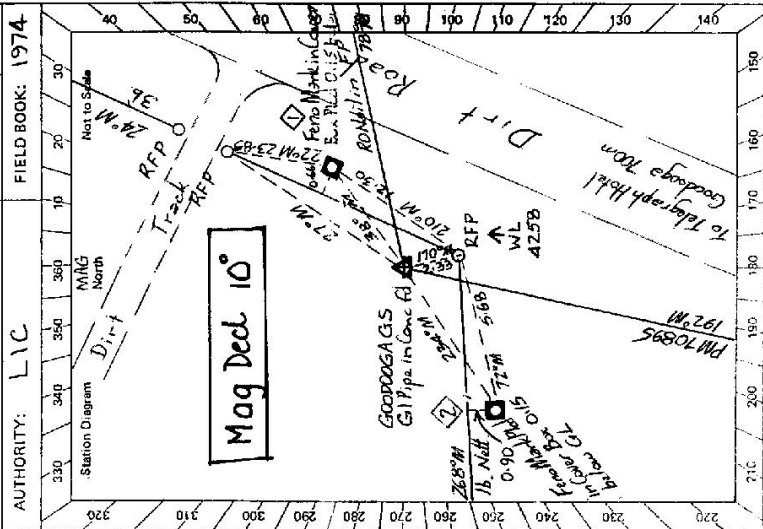
Mark	Direction	Horiz. Distance	Height Difference	Mark	Direction	Horiz. Distance	Height Difference
			above standpt.				above standpt.
			below				below
			above standpt.				above standpt.
			below				below
			above standpt.				above standpt.
			below				below
			above standpt.				above standpt.
			below				below
			above standpt.				above standpt.
			below				below
			above standpt.				above standpt.
			below				below
			above standpt.				above standpt.
			below				below

Prepared by: D. HALLS
 Checked: K. Zahra 24/8/78
 Noted on U.T.M. Card

Checked

CARD 1 of 2 CARDS
 No.: 6220
 STATION: GOODDOGA GS

MAP SHEETS
 SCALE 1:250 000
 ANGLE DOOL
 INSPECTED BY: J Sutton
 DATE: 29th April 1991
 FIELD BOOK: 1974



CENTRAL MAPPING AUTHORITY
 GEODETIC SURVEY OF N.S.W.
 GEODETIC STATION RECONNAISSANCE and MAINTENANCE REPORT

Description:
 Note: Cross out word or words which do not apply

- Cleared by lines bearing Cleared 360° from Trig. Mast
- ~~Mast & Vanes have been painted white & black respectively.~~
- The station/~~pillar~~ was unpiled/~~not unpiled~~/~~constructed~~ on 29th April 1991, dimensions now being:
 Description of mark GI Pipe in Conc should be explicit, e.g., S/Steel Pillar Plate, Steel Plug, Brass plug, Bolt, G.I. Pipe
 Height of mark 0.224 m. above ~~feet~~/~~concrete~~/~~soil~~/~~G.L.~~ Mark is 0.020 m. above ~~soil~~/~~G.L.~~
 Height of Top Vanes to Top Mark/Pillar platem. Diameter of Vanes (vertical)m.
 Height of Cairnm. Diameter of Cairnm. ~~Name Plate found/not found/placed~~
 Length of Mastm. (approximate if not unpiled)
- Feno Mark in Cover set in ~~soil~~ Box has been placed ~~found~~ bearing 228° 30' M from ~~Mast/Plug/Pillar~~ GI Pipe fd
- Feno Mark in Cover Box set in ~~soil~~ Soil has been placed ~~found~~ bearing 234° 00' M from ~~Mast/Plug/Pillar~~ GI Pipe fd
- A set in conc./rock has been placed/ found, bearing° M from Mast/Plug/Pillar
- A set in conc./rock has been placed/ found, bearing° M from Mast/Plug/Pillar

8. Action required:

Mark	Direction	Horiz. Distance	Height Difference	Mark	Direction	Horiz. Distance	Height Difference
PM 70895	0° 00' 00"		below standpt.	PM 70895	0° 00' 00"		above standpt.
Feno Mark in Cover Box	244° 01' 24"	6.738	0.224	Gooddoga GS GI Pipe	26° 30' 49"	10.596	0.091
Feno Mark in Cover Box	208° 26' 29"	10.593	0.091	Feno Mark in Cover Box	32° 56' 08"	16.657	0.134
Ro Nail in Fee Post	248° 31' 39"		below standpt.	Ro Nail in Fee Post	249° 51' 11"		above standpt.
			below standpt.				above standpt.
			below standpt.				above standpt.
			below standpt.				above standpt.
			below standpt.				above standpt.
			below standpt.				above standpt.
			below standpt.				above standpt.
			below standpt.				above standpt.

STANDPOINT: GI Pipe in Conc. fd. STANDPOINT: Feno Mark in Cover Box Pied RMI

Prepared by: J Sutton 29.4.91 Checked: 6 Oct 30.4.91
 Normal on U.T.M. Grid

Checked

407

CARD 2 OF 2 CARDS

GEODETTIC SURVEY OF A.S.M.

CENTRAL MAPPING AUTHORITY

GEODETTIC STATION RECONNAISSANCE and MAINTENANCE REPORT

- Description:**
- Note: Cross out word or words which do not apply*
- Cleared by lanes bearing..... from Trig. Mast
 - Mast & Vanes have been painted white & black respectively.
 - The station/pillar was unpiled/not unpiled/constructed on..... 19....., dimensions now being:
 - Description of mark..... should be explicit, e.g., S/Steel Pillar Plate, Steel plug, Brass plug, Bolt, G.I. Pipe
 - Height of mark..... m. above rock/concrete; Mark is..... m. above G.L.
 - Height of Top Vanes to Top Mark/Pillar plate..... m. Diameter of Vanes (vertical)..... m.
 - Height of Cairn..... m. Diameter of Cairn..... m. Name Plate found/not found/placed.
 - Length of Mast..... m. (approximate if not unpiled)
 - A..... set in conc/rock has been placed/found, bearing.....° M from Mast/Plug/Pillar
 - A..... set in conc/rock has been placed/found, bearing.....° M from Mast/Plug/Pillar
 - A..... set in conc/rock has been placed/found, bearing.....° M from Mast/Plug/Pillar
 - A..... set in conc/rock has been placed/found, bearing.....° M from Mast/Plug/Pillar
8. Action required:.....

STANDPOINT: *Feno Mark in Cover Box Piled RM2* STANDPOINT:

Mark	Direction	Horiz. Distance	Height Difference	Mark	Direction	Horiz. Distance	Height Difference
PM 70825	0° 00' 00"		above standpt.				above standpt.
Feno Mark in Cover Box	217° 37' 23"	16.655	below standpt.				below standpt.
Goodloga G.S.G. Pipe	224° 24' 25"	6.237	above standpt.				above standpt.
Ro Nail in Tee Post	248° 15' 34"		below standpt.				below standpt.

Prepared by: *J. Sutton* 29.4.91
 Checked: *6 Jan 30 4.91*
 Noted on U.T.M. Grid

STATION: *GOODLOGA G.S.* No.: *6220*

MAP SHEETS *ANGLE DOOL* SCALE 1:100 000

SCALE 1:250 000 *GOODLOGA*

INSPECTED BY: *J. SUTTON* DATE: *29th April 1991*

AUTHORITY: *L.I.C.* FIELD BOOK: *1974*

Not to Scale

Checked