

CENTRAL MAPPING AUTHORITY

Department of Lands

Trigonometrical Survey of N.S.W.

RECONNAISSANCE and MAINTENANCE REPORT

This Trig. Station has been:-

Note: Cross out word or words which do not apply

1. Completely cleared to permit 360° vision to surrounding Trig. ☒
2. Cleared by lances bearing 9.7° to 55° ☒ from Trig. Mast
3. Trig. Mast & Vanes have been painted white & black respectively. ☒
4. The Trig. was unpiled/~~not unpiled~~, dimensions now being: ☒ should be explicit, e.g. Steel plug, Brass plug, Bolt, G.L. Pipe

Description of mark. Brass Top of Mast Range 1:180 above rock/concrete below G.L.Height of Top Vanes to Top Mast 144.3 m. Diameter of Vanes (vertical) 750 m.Height of Spire 0.15 m. Diameter of Cairn 0.15 m.Length of Mast 0.15 m. (approximate if not unpiled)5. A Brass Top set in conc/rock has been placed 2.523 m. bearing 36° from Trig. Mast6. A SSM set in conc/soil has been placed 2.438 m. bearing 203° from Trig. Mast7. A SSM set in conc/soil has been placed 2.438 m. bearing 203° from Trig. Mast8. A SSM set in conc/rock has been placed 2.438 m. bearing 203° from Trig. Mast9. Connection Brass Top to SSM is 4.388 m. bearing 210°10. Connection Brass Top to SSM is 4.388 m. bearing 210°11. Connection Brass Top to SSM is 4.388 m. bearing 210°12. Connection Brass Top to SSM is 4.388 m. bearing 210°13. Diff. Ht. Brass Top to SSM is 1.242 m. below Brass Top14. Diff. Ht. SSM to Brass Top is 1.242 m. above Brass Top15. Diff. Ht. SSM to Brass Top is 1.242 m. above Brass Top16. Diff. Ht. SSM to Brass Top is 1.242 m. above Brass Top

Prepared by:

Checked:

27-7-77

Noted on U.T.M. Card

STATION TS 5925

Co: GeographicalMap Sheet: W1411111Inspected by: L. Q. WilliamsAuthority: C.M.A.

Beacon Diagram

Ph: KIMBLICKNo: 935ADate: 17th July 1977Field Book: 01540

Not to Scale

750

144.3

180

365

Concrete

Concrete

Concrete

Concrete

Concrete

Concrete

Concrete

Concrete

Concrete

Concrete

Concrete

Concrete

Concrete

Concrete

Concrete

Concrete

Concrete

Concrete

Concrete

Concrete

Concrete

Concrete

Concrete

Concrete

Concrete

Concrete

Concrete

Concrete

Concrete

Concrete

Concrete

Concrete

Concrete

Concrete

Concrete

Concrete

Concrete

Concrete

Concrete

Concrete

Concrete

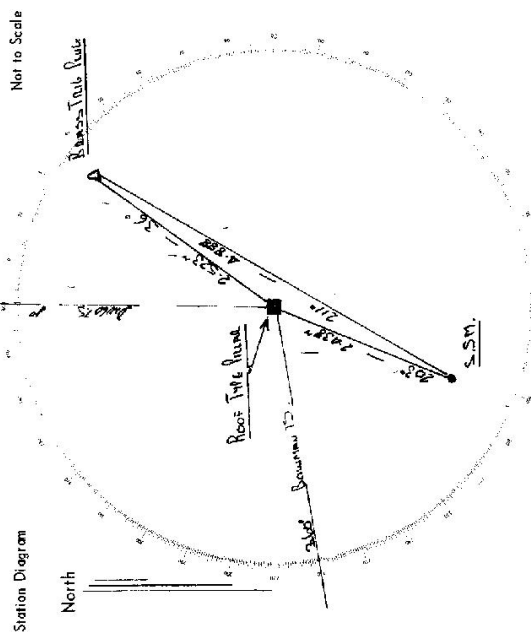
Date: 2/1/73

Record of Station

Reel Top Brass concreteChecked: W. Williams

Current Occupant:

Address:



List of Observed Directions:--

Standpoint: Love Type Value

Station	Direction	Station	Direction
Burleso Tj.	9. 00. 00	Durleso Tj.	9. 00. 00
Burleso Tj. to Durleso Tj.	41. 27. 50	Durleso Tj. to Burleso Tj.	21. 24. 10
Burleso Tj. to Durleso Tj.	20. 36. 00	Durleso Tj. to Burleso Tj.	21. 24. 10
Burleso Tj. to Durleso Tj.	25. 2. 11. 10	Durleso Tj. to Burleso Tj.	25. 2. 11. 10

[illegible]

CENTRAL MAPPING AUTHORITY

GEODETTIC SURVEY OF N.S.W

GEODETTIC STATION RECONNAISSANCE and MAINTENANCE REPORT

Description:

1. Cleared by lanes bearing..... *Note: Cross out word or words which do not apply*

2. Mast & Vanes have been painted white & black respectively.

3. The station/pillar was unpiled/not unpiled/constructed on..... 19....., dimensions now being:

Description of mark..... should be explicit, e.g., S/Steel Pillar Plate, Steel plug, Brass plug, Bolt, G.I. Pipe

Height of mark.....m. ^{above} _{below} rock/concrete; Mark is.....m. ^{above} _{below} G.L.

Height of Top Vanes to Top Mark/Pillar plate.....m. Diameter of Vanes (vertical).....m.

Height of Cairn.....m. Diameter of Cairn.....m. Name Plate found/not found/placed.

Length of Mast.....m. (approximate if not unpiled)

4. A.....set in conc/rock has been placed/found, bearing.....°M from Mast/Plug/Pillar

5. A.....set in conc/rock has been placed/found, bearing.....°M from Mast/Plug/Pillar

6. A.....set in conc/rock has been placed/found, bearing.....°M from Mast/Plug/Pillar

7. A.....set in conc/rock has been placed/found, bearing.....°M from Mast/Plug/Pillar

8. Action required:.....

STANDPOINT:

STANDPOINT:

Mark	Direction	Horiz. Distance	Height Difference	Mark	Direction	Horiz. Distance	Height Difference
			above below				above below
			standpt.				standpt.
			above below				above below
			standpt.				standpt.
			above below				above below
			standpt.				standpt.
			above below				above below
			standpt.				standpt.
			above below				above below
			standpt.				standpt.
			above below				above below
			standpt.				standpt.
			above below				above below
			standpt.				standpt.

Prepared by:

Checked:

S: 2733-1

Noted on U.T.M. Card

Checked

STATION: GANGAT G.S. OR	No.: 5925
MAP SHEET SCALE 1:250 000	NEWCASTLE
INSPECTED BY: Glenn Jones	DATE: 4/3/78
AUTHORITY: CMA	FIELD BOOK:

S. 2733-2 D. West, Government Printer

STATION TS 5925	
<p>Owner's Name:</p> <p>Address:</p> <p>Phone:</p>	<p>Current Occupant:</p> <p>Address:</p> <p>Phone:</p>
<p style="text-align: center;">ACCESS</p> <p>Access Report of <u>4/3/1978</u> was found unsuitable <u>unsuitable</u>.</p> <p>000. — Railway crossing at Gloucester, on road to TAREE. (Buckett's way)</p> <p>100. — Pass Road on right, sign says "walkway 16 Bulahdelah 6". (See Mr Terry Carson down this road for key to locked gate. House is second on left, 2 km off Taree road. "Bunbar" Finia - 2 garages)</p> <p>23.5 — Pass road on left. Sign says "Bundook in."</p> <p>25.9 — Group of houses on left.</p> <p>27.0 — Turn left off main road.</p> <p>27.7 — Grid</p> <p>31.8 — Take right fork (left goes to house)</p> <p>33.5 — Grid</p> <p>Pass tracks on left — (37.6, 38.5) 39.3 — Pass track on right.</p> <p>40.0 — Take left fork. Pass tracks on right — (40.45, 40.8, 41.5)</p> <p>41.7 — Take left fork (Right fork leads to transmitter tower)</p> <p>42.4 — Straight ahead track on left. 42.65 — Quarry on right.</p> <p>43.0 — Keep left. 44.1 — Straight ahead. Track on left.</p> <p>46.3 — Veer right, down thru quarry and make way up to top of ridge.</p> <p>47.3 — Stop truck at end of track. 10 min walk to trig. (some blazes)</p> <p>Track goes west, along LHS of ridge then up.</p>	
<p>Beacon Diagram</p> <p style="text-align: right;">Not to Scale</p>	<p>This section to be completed by officer constructing pillar.</p> <p>Original station mark found/not found.</p> <p>Description of mark:</p> <p>Original beacon found/not found.</p> <p>Description of beacon:</p> <p>Height Top of Vanes to Top Mark m.</p> <p>Height of mark m. above G.L. below</p> <p>Diameter of Vanes m. Height of Cairn m.</p> <p>Original Beacon has/has not been destroyed by me.</p>
<p>Date:</p> <p>Record of Station</p>	

GEODETTIC SURVEY OF N.S.W.

CENTRAL MAPPING AUTHORITY

GEODETTIC STATION RECONNAISSANCE and MAINTENANCE REPORT

Description:

1. Cleared by lanes bearing..... 260°M to 10°M *Note: Cross out word or words which do not apply*
 from Trig. Mast

2. Mast & Vanes have been painted white & black respectively.

3. The station/pillar was ~~unplaced~~/not unplaced/~~constructed~~ on..... 20th March 1986., dimensions now being:

Description of mark SSM in Concrete should be explicit, e.g., S/Steel Pillar Plate, Steel plug, Brass plug, Bolt, G.I. Pipe

Height of mark..... 1.180 m. ^{above} ~~below~~ rock/concrete; Mark is..... m. ^{above} ~~below~~ G.L.

Height of Top Vanes to Top Mast/Pillar plate..... 1.443 m. Diameter of Vanes (vertical)..... 0.750 m.

Height of Cairn..... m. Diameter of Cairn..... m. Name Plate found/~~not found~~/placed.

Length of Mast..... 1.523 m. (approximate if not unplaced)

4. ~~Brass Trig. Plug~~..... set in conc/~~rock~~ has been ~~placed~~/found, bearing..... 65° M from ~~Mast/Plug~~/Pillar

5. An..... SSM..... (N.A.M.) set in conc/~~rock~~ has been ~~placed~~/found, bearing..... 22.5° M from ~~Mast/Plug~~/Pillar

6. A..... set in conc/rock has been placed/found, bearing..... °M from Mast/Plug/Pillar

7. A..... set in conc/rock has been placed/found, bearing..... °M from Mast/Plug/Pillar

8. Action required:..... 360° Clearing

STANDPOINT:

STANDPOINT:

Mark	Direction	Horiz. Distance	Height Difference	Mark	Direction	Horiz. Distance	Height Difference
			above standpt.				above standpt.
			below				below
			above standpt.				above standpt.
			below				below
			above standpt.				above standpt.
			below				below
			above standpt.				above standpt.
			below				below
			above standpt.				above standpt.
			below				below
			above standpt.				above standpt.
			below				below
			above standpt.				above standpt.
			below				below

Prepared by:

Checked:

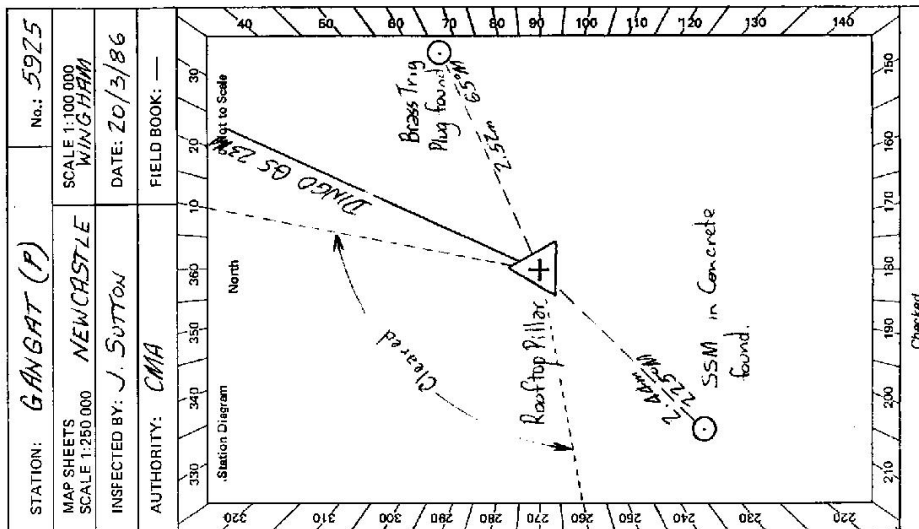
Noted on U.T.M. Card

20/3/86

2-2-86

Checked:

Prepared by:



Checked

S-2733-2 D. West, Government Printer

STATION BANGAT (P) 5925

Owner's Name:

Address:

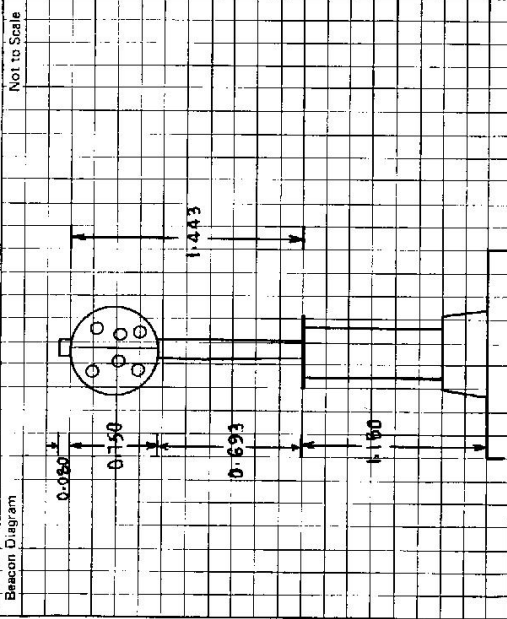
Phone:

Current Occupant:

Address:

Phone:

ACCESS

Access Report of 4.3/19.78 was found suitable ~~Access~~

This section to be completed by officer constructing pillar.

Original station mark found/~~not found~~.

Description of mark:

Original beacon found/not found.

Description of beacon:

Height Top of Vanes to Top Mark:m.

Height of mark:m. above rock/conc.m. above G.L. below

Diameter of Vanesm.

Height of Calmm.

Original Beacon has/has not been destroyed by me.

Date

Record of Station