

75-103

Department of Lands

Integration by of N.S.W.

RECONNAISSANCE and MAINTENANCE REPORT 10/08

STATION

BATHURST

Map Sheet

Co: BATHURST

Ph: W.A. MARSH

No: ANSON

Inspected by: W.A. MARSH

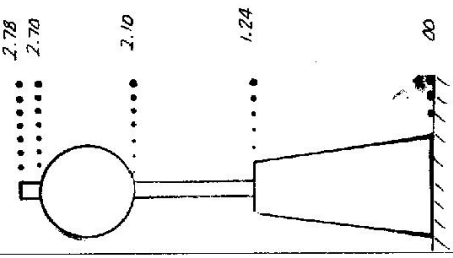
Date: Nov 75

Authority: DRAINAGE LBO.

Field Book No: 427

Beacon Diagram

Not to Scale



This Trig. Station has been:-

Note: Cross out words or words which do not apply

1. Completely cleared to permit 360° vision to surrounding Trigs.
2. Cleared by Jones bearing - BOUNDRIES BLACK VISION 330 - 360° M from Trig. Mast
3. Trig. Mast & Vanes have been painted white & black respectively.
4. The Trig. was ~~unpiled~~/not unpiled, dimensions now being:
 - Description of mark... CONCRETE PILLAR... should be explicit, e.g. Steel plug, Brass plug, Bolt, Concrete Pillar
 - Height of mark... 1.24 m above ~~concrete~~ ^{concrete} ... 1.24 m above G.L.
 - Height of Top Vanes to Top Mast/Top pillar plate... 1.46 m Diameter of Vanes (vertical)... 0.60 m.
 - Height of Mast... m. Diameter of Mast... m.
 - Length of Mast... 1.54 m. (approximate if not unpiled)

5. A... ~~CS 1~~ set in conc./~~soil~~ has been placed ~~at 3.006~~ m. bearing... °M from Trig. Mast/pillar
6. A... ~~GP 3~~ set in conc./~~soil~~ has been placed ~~at 4.022~~ m. bearing... °M from Trig. Mast/pillar
7. A... ~~GP 5~~ set in conc./~~soil~~ has been placed ~~at 2.655~~ m. bearing... °M from Trig. Mast/pillar
8. A... ~~CS 4~~ set in conc./~~soil~~ has been placed ~~at 3.103~~ m. bearing... °M from Trig. Mast/pillar

9. Connection ~~PILLAR~~ to ~~CONC. BLOCK~~ 13.412 m. bearing... °M UNDER CENTRE OF MAST PILLAR

10. Connection ~~GP 3~~ to ~~CS 4~~ 10.087 m. bearing... °M

11. Connection ~~GP 3~~ to ~~GP 5~~ 24.230 m. bearing... °M

12. Connection ~~GP 3~~ to ~~CONC. BLOCK~~ 10.718 m. bearing... °M

13. Diff. Ht. ... is ... m. above/below

14. Diff. Ht. ... is ... m. above/below

15. Diff. Ht. ... is ... m. above/below

16. Diff. Ht. ... is ... m. above/below

Prepared by: *[Signature]* Checked: *[Signature]*

Date: OCT 75

Record of Station: PILLAR ERRECTED

CENTRAL MAPPING AUTHORITY

Department of Lands

Trigonometrical Survey of N.S.W.

RECONNAISSANCE and MAINTENANCE REPORT

This Trig. Station has been:

Note: Cross out word or words which do not apply

1. Completely cleared to permit 360° vision to surrounding Trig.
2. Cleared by James bearing 10° - 300° (100° to 10° rotated by 20°) from ~~Trig~~ ^{Stainless Steel Pin}
3. Trig. Mast & Vanes have been painted white & black respectively. ✓
4. The Trig. was unpiled/~~not unpiled~~, dimensions now being:

Description of mark... ~~Concrete Observing Pillars~~... should be explicit, e.g. Steel plug, Brass plug, Bolt, G.I. Pipe
 Height of mark ~~Spigot~~ ^{Pillar Plate} ~~0.014~~ m above ~~level~~ ^{level} ~~below~~ ^{above} G.L.
 Height of Top Vanes to Top Mark... ~~1.76~~ m. Diameter of Vanes (vertical)... ~~0.60~~ m.
 Height of ~~Cairn~~ ^{Pillar}... ~~1.22~~ m. Diameter of Cairn... m.

Length of Mast... ~~1.54~~ m. (approximate if not unpiled)

5. A ~~Steel Pin~~ ^{Found} set in conc./teck has been placed... ~~13.412~~ m. bearing... ~~312~~ °M from Trig. Mast
6. A ~~Copper Nail (1)~~ ^{Found} set in conc./soil has been placed... ~~13.105~~ m. bearing... ~~344~~ °M from Trig. Mast
7. A ~~G.I. Pipe (1)~~ ^{Found} set in conc./soil has been placed... ~~26.633~~ m. bearing... °M from Trig. Mast
8. (a) A ~~Copper Nail (2)~~ ^{Found} set in conc./teck has been placed... ~~3.006~~ m. bearing... ~~76~~ °M from Trig. Mast
 (b) A ~~G.I. Pipe (2)~~ ^{Found} set in conc. has been found... ~~3.022~~ m. bearing... ~~338~~ °M from Trig. Mast
9. Connection ~~Steel Pin to Copper Nail (1)~~ ^{Found} 5.584 m. bearing... ~~76~~ °M

10. Connection ~~Steel Pin to G.I. Pipe (1)~~ ^{Found} 13.644 m. bearing... ~~303~~ °M ~~Copper Nail (2) to Copper Nail (1)~~ 9.222 m. bearing... ~~340~~ °M
11. Connection ~~G.I. Pipe (2) to Copper Nail (1)~~ ^{Found} 10.093 m. bearing... ~~354~~ °M ~~Copper Nail (2) to Stainless Steel Pin~~ 9.143 m. bearing... ~~338~~ °M
12. Connection ~~G.I. Pipe (2) to Copper Nail (1)~~ ^{Found} 4.257 m. bearing... ~~124~~ °M ~~Copper Nail (2) to Stainless Steel Pin~~ 10.724 m. bearing... ~~317~~ °M
13. Diff. Ht. ~~Stainless Steel Pin~~ ^{Found} is 0.750 m. ~~below~~ ^{below} ~~Pillar Plate~~
14. Diff. Ht. ~~Copper Nail (1)~~ ^{Found} is 0.784 m. ~~below~~ ^{below} ~~Pillar Plate~~
15. Diff. Ht. ~~Copper Nail (2)~~ ^{Found} is 1.459 m. ~~below~~ ^{below} ~~Pillar Plate~~
16. Diff. Ht. ~~G.I. Pipe (2)~~ ^{Found} is 1.092 m. ~~below~~ ^{below} ~~Pillar Plate~~

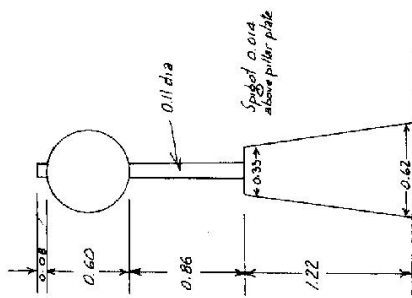
Prepared by: AL Morrison Checked:

Noted on U.T.M. Card

STATION TOTTEN (PILLAR) TS. 5583

Co: BATHURST Ph: ANSON
 Map Sheet: ORANGE 1:25,000
 Inspected by: AL Morrison
 Authority: Field Book: 1470
 No: 8731/11-N
 Date: 7th July 1976
 Not to Scale

Beacon Diagram



All Pillar Plate engraved survey only

Date	Record of Station
	G.I. Pipe (2) is 0.307 below Copper Nail (1)
	G.I. Pipe (2) is 0.367 above Copper Nail (2)
	Copper Nail (2) is 0.674 below Copper Nail (1)

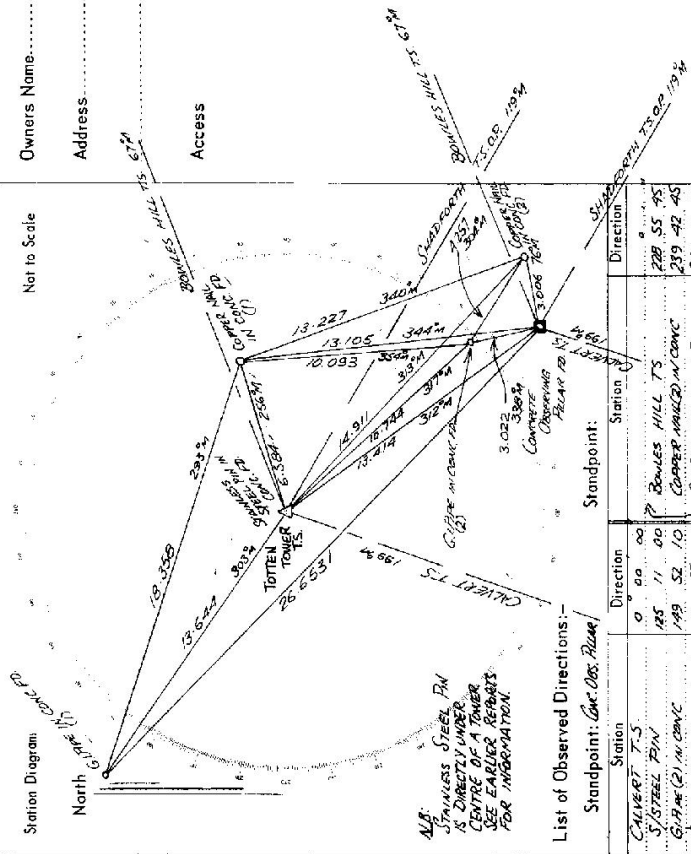
Checked

STATION TOTTEN (Pillar) T.S. 5583

Current Occupant:
 Address:

Owners Name:
 Address:

Not to Scale



All STEINLERS STEEL PILLAR IS DIRECTLY UNDER CENTRE OF A TOWER. SEE EARLIER REPORTS FOR INFORMATION.

List of Observed Directions:-

Station	Direction	Station	Direction
CALVERT T.S.	0° 00' 00"	BOWLES HILL T.S.	228° 55' 45"
S STEEL PILLAR	185° 11' 00"	COPPER HALLS IN CONC	239° 42' 45"
CALVERT (2) IN CONC	199° 52' 10"	SHADWORTH T.S. O.P.	281° 00' 00"
BOWLES HILL (1) IN CONC	153° 55' 00"		

Station	Direction	Station	Direction
CALVERT T.S.	0° 00' 00"	SHADWORTH T.S. O.P.	281° 05' 00"
G.P. PILLAR IN CONC	105° 28' 45"	CMT. ASS. PILLAR	305° 12' 40"
BOWLES HILL T.S.	229° 00' 30"		
COPPER HALLS IN CONC	232° 10' 25"		

GEODETTIC SURVEY OF A.S.W.

CENTRAL MAPPING AUTHORITY

GEODETTIC STATION RECONNAISSANCE and MAINTENANCE REPORT

STATION: **TOTTEN** No.: **5583**

MAP SHEETS SCALE 1:250 000

SCALE 1:100 000

INSPECTED BY: **R. ELLIS** DATE: **28 Aug 87**

AUTHORITY: **C-M-A** FIELD BOOK:

Description: *Note: Cross out word or words which do not apply*

1. Cleared by lanes bearing from Trig. Mast
2. Mast & Vanes have been painted white & black respectively. ✓
3. The ~~structure~~/pillar was unpiled/not unpiled/constructed on 19 dimensions now being: Description of mark.....should be explicit, e.g. S/Steel Pillar Plate, Steel plug, Brass plug, Bolt, G.I. Pipe
Height of mark.....m. above below rock/concrete; Mark is.....m. above below G.L.
Height of Top Vanes to Top Mark/Pillar platem. Diameter of Vanes (vertical).....m.
Height of Cairn.....m. Diameter of Cairn.....m. Name Plate found/not found/placed.
Length of Mastm. (approximate if not unpiled)
4. A.....set in conc/rock has been placed/found, bearing.....°M from Mast/Plug/Pillar
5. A.....set in conc/rock has been placed/found, bearing.....°M from Mast/Plug/Pillar
6. A.....set in conc/rock has been placed/found, bearing.....°M from Mast/Plug/Pillar
7. A.....set in conc/rock has been placed/found, bearing.....°M from Mast/Plug/Pillar
8. Action required: **NIL - AS PER 7/9/87. NO CHANGE IN STATION.**

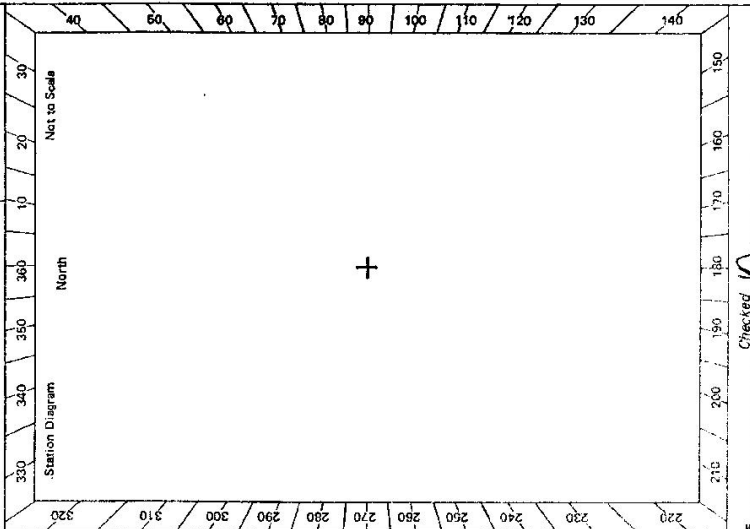
STANDPOINT:

Mark	Direction	Horiz. Distance	Height Difference	Mark	Direction	Horiz. Distance	Height Difference
			above standpt				above standpt
			below standpt				below standpt
			above standpt				above standpt
			below standpt				below standpt
			above standpt				above standpt
			below standpt				below standpt
			above standpt				above standpt
			below standpt				below standpt
			above standpt				above standpt
			below standpt				below standpt

Prepared by: *[Signature]*

Checked: *[Signature]*

Named on U.T.M. Grid



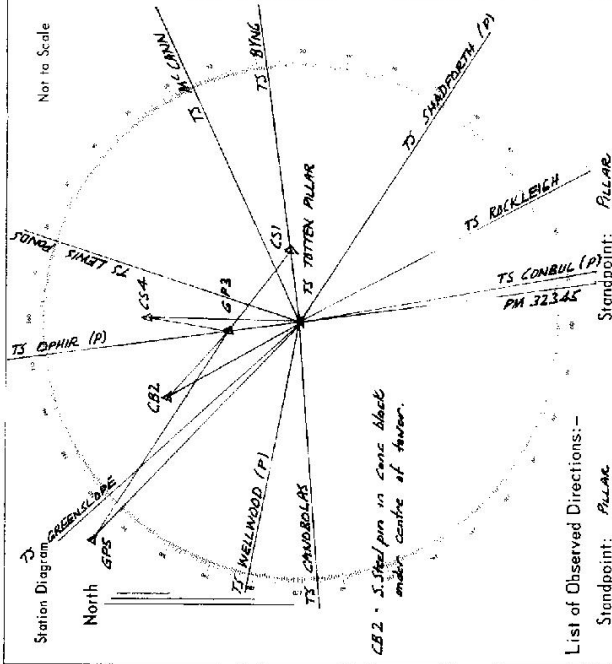
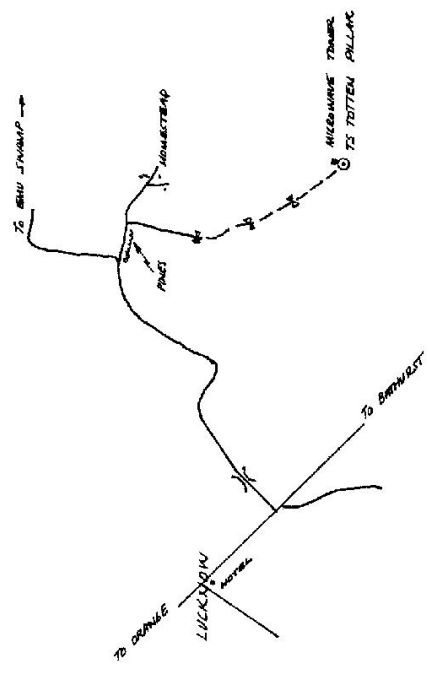
Checked *[Signature]*

STATION **TOTTEN(P) TS 5583**

Owners Name **MERUNGIE Pty. LTD** Current Occupant **BLUNT F.L.**

Address **LUCKNOW** Address **LUCKNOW**

Access **Nov 1975**
 00 FROM JUNCTION EMU SWAMP Rd & MICHELL HIGHWAY 0.5K S.E. OF LUCKNOW HOTEL
 FOLLOW EMU SWAMP ROAD.
 1-6 ROAD THRU LEFT - ENTRANCE TO MERUNGIE STRAIGHT ON,
 GO THRU GATE & GATE.
 1-9 TURN RIGHT AT END OF PINES ON RIGHT FOLLOW TRACK
 2-4 THRU GATE CROSS Paddock HEAD TOWARD TOWER
 2-6 THRU WHITE GATE AT INTN. OF FENCES FOLLOW FENCE ALONG RIDGE
 2-9 THRU GATE BY POWER POLE FOLLOW TRACK UP HILL
 3-2 PILLAR.



List of Observed Directions:-

Station	Direction	Station	Direction
BYUL TS	359 59 60	BYUL TS	359 59 60
SHADPOETH TS (P)	41 18 59.9	CS1	0 00 00
ROCKLEIGH TS	71 43 23.3	GPS	235 31 58.2
CONBUL TS (P)	80 13 18.2	CB2	245 29 11.2
PM 32345	92 45 27.2	GPS	270 09 50.6
SANDBOLAS TS	183 01 22.5	CS4	274 73 12.8
		STANDPOINT GPS	
		Station	Direction
WELLSWOOD TS (P)	208 12 57.2	DAPIR TS (P)	359 59 60
GREENSLIPE TS	235 33 37.8	CS4	5 16 08
DAPIR TS (P)	270 09 50.6	CS1	135 05 04
LEMUIS FIELDS TS	295 58 13.8	GPS	321 18 13
MICKENNAE TS	344 34 44.6	CB2	328 34 13