

Department of Lands

Trigonometrical Survey of N.S.W.

RECONNAISSANCE and MAINTENANCE REPORT

STATION

SKILLION T.S.O.P. T5 5563

This Trig. Station has been:-

Note: Cross out word or words which do not apply

1. ~~Completely cleared to permit 360° vision to surrounding trig.~~

2. Cleared by lanes bearing 2574 to 14094 & 20794 to 28194 from Trig. Mast

3. Trig. Mast & Vanes have been painted white & black respectively.

4. The Trig. was unpiled/~~not unpiled~~, dimensions now being: ~~3.60 m~~ ^{3.60 m} above ~~concrete~~ ^{concrete} ~~3.60 m~~ below ~~concrete~~ ^{concrete} ~~3.60 m~~ from Trig. Mast

Description of mark: Concrete Ob. Pillar should be explicit, e.g. Steel plug, Brass plug, Bolt, G.I. Pipe

Height of ~~mark~~ ^{Pillar} ~~0.016~~ ^{0.016} m above ~~concrete~~ ^{concrete}

Height of Top Vanes to Top Mark ~~1.432~~ ^{1.432} m.

Height of ~~mark~~ ^{Pillar} ~~1.37~~ ^{1.37} m. ^{above cone.}

Length of Mast m. (approximate if not unpiled) Date of Construction $24/5/76$

5. A. SSM set in conc/~~rock~~ has been ~~placed~~ ^{placed} 2.298 m. bearing 248 ^{0M} from Trig. Mast

6. A. Cu. Nail set in conc/~~rock~~ has been ~~placed~~ ^{placed} 4.780 m. bearing 323 ^{0M} from Trig. Mast

7. A. Brass Plug set in ~~conc/rock~~ ^{rock} has been ~~placed~~ ^{placed} 2.555 m. bearing 295 ^{0M} from Trig. Mast

8. A. set in conc/rock has been placed m. bearing ^{0M} from Trig. Mast

9. Connection Brass Plug to SSM : 2.162 m. bearing 186 ^{0M}

10. Connection Brass Plug to Cu. Nail : 2.720 m. bearing 346 ^{0M}

11. Connection: to m. bearing ^{0M}

12. Connection: to m. bearing ^{0M}

13. Diff. Ht. Pillar Plate is 1.344 m. above SSM in Conc. Pl.

14. Diff. Ht. Pillar Plate is 1.350 m. above Cu. Nail in Conc.

15. Diff. Ht. Pillar Plate is 1.879 m. above Brass Plug in rock

16. Diff. Ht. Brass Plug is 0.592 m. above Conc. in Conc.

Prepared by: E. GARCIA

Checked: E. GARCIA

Noted on U.T.M. Card $24/5/76$

Co: DUDLEY

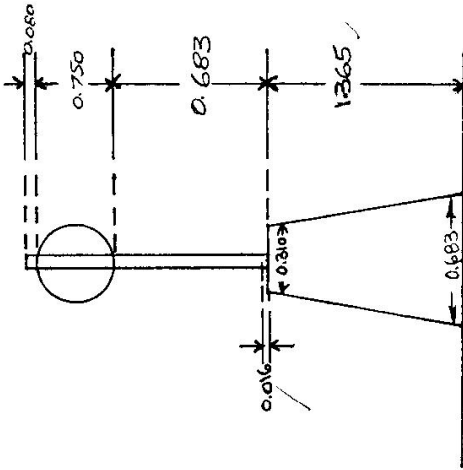
Map Sheet: KEMPSEY

Inspected by: E. GARCIA

Authority: C.M.A

Beacon Diagram

Not to Scale



Date: 24/5/76

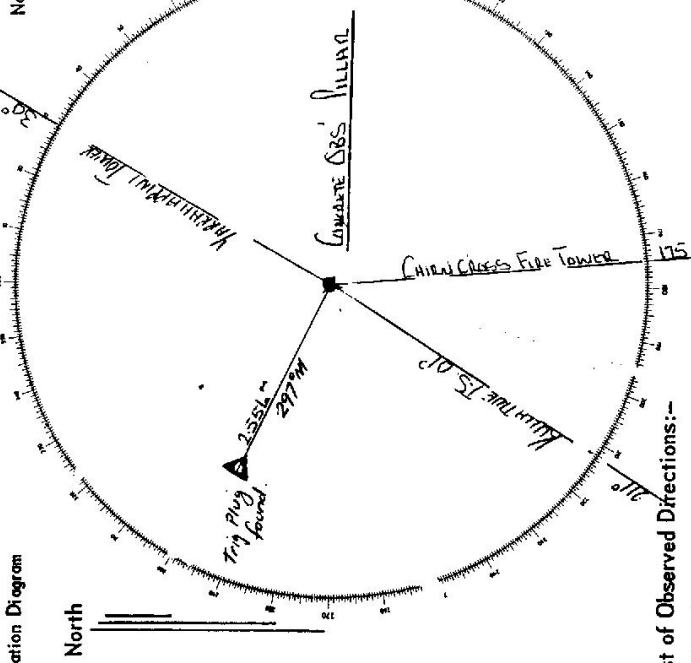
Record of Station: Conc observing pillar established

Checked

STATION SKILLIAN PILLAR: TS 5563

Owners Name.....
 Current Occupant.....
 Address.....
 Address.....
 Access.....

Not to Scale



List of Observed Directions:-

Standpoint: Corcaine Obs Pillar		Standpoint: Tellu Puk	
Station	Direction	Station	Direction
WARRIMUNG TOWER	300	KULLAMUNG TOWER	0
S.S.M. MOUNTAIN ISLAND	175	CHINA CROSS FIRE TOWER	175
Tellu Puk	115	CHINA CROSS FIRE TOWER	175
CORCAINE MOUNTAIN ISLAND	115	CHINA CROSS FIRE TOWER	175
MOUNTAIN ISLAND	175	CHINA CROSS FIRE TOWER	175
CHINA CROSS FIRE TOWER	175	CHINA CROSS FIRE TOWER	175

Station	Direction	Station	Direction

GEODETIC SURVEY OF N.S.W.

CENTRAL MAPPING AUTHORITY

GEODETIC STATION RECONNAISSANCE and MAINTENANCE REPORT

Description:

1. Cleared by Janes bearing.....
 Note: Cross out word or words which do not apply from Trig, Mast

2. Mast & Vanes have been painted white & black respectively.

3. The station/pillar was unpiled/not unpiled/constructed on.....19....., dimensions now being:

Description of mark.....should be explicit, e.g., S/Steel Pillar Plate, Steel plug, Brass plug, Bolt, G.I. Pipe

Height of mark.....m. ^{above} rock/concrete; Mark is.....m. ^{above} G.L. _{below}

Height of Top Vanes to Top Mark/Pillar plate.....m. Diameter of Vanes (vertical).....m.

Height of Cairn.....m. Diameter of Cairn.....m. Name Plate found/not found/placed.

Length of Mast.....m. (approximate if not unpiled)

4. A.....set in conc/rock has been placed/found, bearing.....°M from Mast/Plug/Pillar

5. A.....set in conc/rock has been placed/found, bearing.....°M from Mast/Plug/Pillar

6. A.....set in conc/rock has been placed/found, bearing.....°M from Mast/Plug/Pillar

7. A.....set in conc/rock has been placed/found, bearing.....°M from Mast/Plug/Pillar

8. Action required: New mast required.....

STANDPOINT:

Mark	Direction	Horiz. Distance	Height Difference	Mark	Direction	Horiz. Distance	Height Difference
			above standpt.				above standpt.
			below standpt.				below standpt.
			above standpt.				above standpt.
			below standpt.				below standpt.
			above standpt.				above standpt.
			below standpt.				below standpt.
			above standpt.				above standpt.
			below standpt.				below standpt.

Prepared by: [Signature]

Checked: [Signature]

ST 2733-1

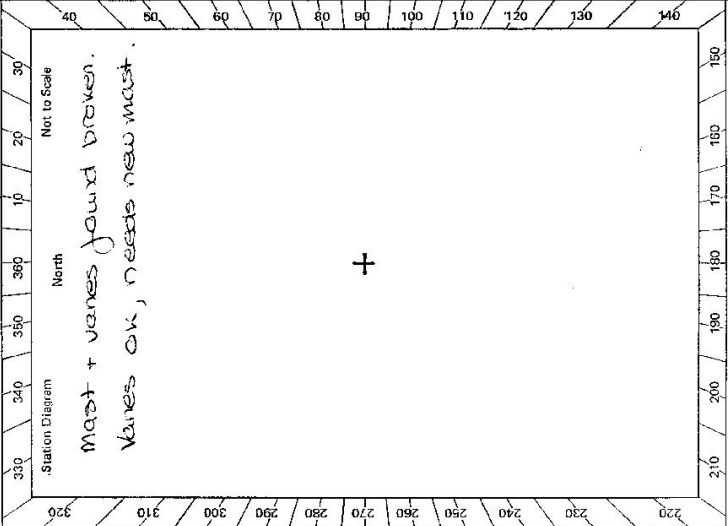
Noted on U.T.M. Card

STATION: Skullion (P) No.: 5563

MAP SHEET SCALE 1:250 000

INSPECTED BY: D.R. HALLS DATE: 16/1/70

AUTHORITY: CMA FIELD BOOK:



Checked

CENTRAL MAPPING AUTHORITY

STATION: SULLIVAN HILL No.: 5563

GEODETTIC STATION RECONNAISSANCE and MAINTENANCE REPORT

Description:
 1. Cleared by lanes bearing.....
 Note: Cross out word or words which do not apply
 from Trig. Mast

2. Mast & Vanes have been painted white & black respectively.

3. The station/pillar was unpiled/not unpiled/constructed on.....19....., dimensions now being:

Description of mark.....should be explicit, e.g., S/Steel Pillar Plate, Steel plug, Brass plug, Bolt, G.I. Pipe

Height of mark.....m. ^{above} rock/concrete; Mark is.....m. ^{above} G.L.

Height of Top Vanes to Top Mark/Pillar platem. Diameter of Vanes (vertical).....m.

Height of Cairn.....m. Diameter of Cairn.....m. Name Plate found/not found/placed.

Length of Mast.....m. (approximate if not unpiled)

4. A.....set in conc/rock has been placed/found, bearing.....° M from Mast/Plug/Pillar

5. A.....set in conc/rock has been placed/found, bearing.....° M from Mast/Plug/Pillar

6. A.....set in conc/rock has been placed/found, bearing.....° M from Mast/Plug/Pillar

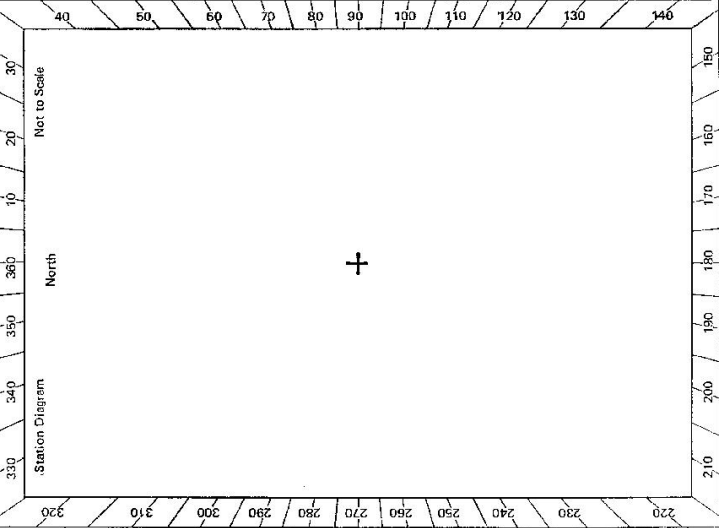
7. A.....set in conc/rock has been placed/found, bearing.....° M from Mast/Plug/Pillar

8. Action required:.....

MAP SHEET SCALE 1:250 000

INSPECTED BY: L. J. BROWN DATE: 30 AUGUST 14

AUTHORITY: C.M.A. FIELD BOOK: 1681



STANDPOINT:			
Mark	Direction	Horiz. Distance	Height Difference
			above standpt.
			below
			above standpt.
			below
			above standpt.
			below
			above standpt.
			below
			above standpt.
			below
			above standpt.
			below
			above standpt.
			below

Prepared by: [Signature] 5/9/19. Checked: [Signature] Noted on U.T.M. Card

GS

<p>St: 2733-2-D, West, Government Printer</p> <p>Beacon Diagram</p>	<p>Not to Scale</p> <p style="text-align: center;">New West Service</p>	<p style="text-align: center;">STATION <u>SULLY</u> <u>TS 5563</u></p> <p>Owner's Name: Address: Phone:</p> <p>Current Occupant: Address: Phone:</p> <p>Access Report of...../19.....was found suitable/unsuitable. <u>ACCESS</u></p>
<p>This section to be completed by officer constructing pillar.</p> <p>Original station mark found/not found.</p> <p>Description of mark:</p> <p>Original beacon found/not found.</p> <p>Description of beacon:</p> <p>Height Top of Vanes to Top Mark.....m.</p> <p>Height of mark.....m, above rock/conc.....m, below G.L.</p> <p>Diameter of Vanesm. Height of Cairnm.</p> <p>Original Beacon has/has not been destroyed by me.</p>		<p>Date</p> <p>Record of Station</p>

CENTRAL MAPPING AUTHORITY

GEODETIC SURVEY OF N.S.W.

GEODETIC STATION RECONNAISSANCE and MAINTENANCE REPORT

STATION: **SKILLION GSOP** No.: **5563**

MAP SHEET
SCALE 1:250 000 HASTING 5

INSPECTED BY: **D. FREDRIKSEN** DATE: **18-10-79**

AUTHORITY: **C.M.A.** FIELD BOOK:

Description: *Note: Cross out word or words which do not apply*

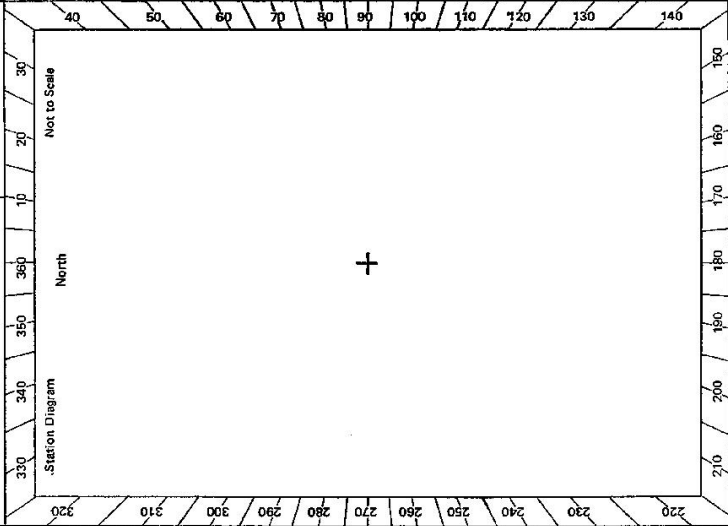
1. Cleared by lanes bearing..... from Trig. Mast
2. Mast & Vanes have been painted white & black respectively.
3. The station/pillar was unpiled/not unpiled/constructed on.....¹⁹....., dimensions now being:
Description of mark.....should be explicit, e.g., S/Steel Pillar Plate, Steel plug, Brass plug, Bolt, G.I. Pipe
Height of mark.....m. ^{above} _{below} rock/concrete; Mark is.....m. ^{above} _{below} G.L.
- Height of Top Vanes to Top Mark/Pillar platem. Diameter of Vanes (vertical).....m.
- Height of Cairn.....m. Diameter of Cairn.....m. Name Plate found/not found/placed.
- Length of Mast.....m. (approximate if not unpiled)
- BRASS TRIG PLUG WAS FOUND TO BE LOOSE
4. A...BRASS...TRIG. PLUG set in conc/rock has been placed/~~found~~, bearing.....° M from Mast/Plug/Pillar
5. A.....set in conc/rock has been placed/found, bearing.....° M from Mast/Plug/Pillar
6. A.....set in conc/rock has been placed/found, bearing.....° M from Mast/Plug/Pillar
7. A.....set in conc/rock has been placed/found, bearing.....° M from Mast/Plug/Pillar
8. Action required:.....

STANDPOINT: **Pillar Plate** **BRASS TRIG PLUG**

Mark	Direction	Horiz. Distance	Height Difference	Mark	Direction	Horiz. Distance	Height Difference
SSM IN CONC	00° 00' 00"		above standpt.	CU NAIL IN CONC	00° 00' 00"		above standpt.
BRASS TRIG PLUG IN PIECE-CLASS	47° 32' 20"	2.564	above standpt. 1.877	Pillar Plate	130° 02' 40"	2.564	below standpt. 1.877
CU NAIL IN CONC	73° 13' 50"		above standpt.	SSM IN CONC	303° 02' 00"		above standpt.
			above standpt.				below
			below				above standpt.
			below				below
			above standpt.				above standpt.
			below				below
			above standpt.				above standpt.
			below				below

Prepared by: **R. COOK** Checked: **8.12.79 20/10/79** 1/11/79 Noted on U.T.M. Card

SI 2733--1

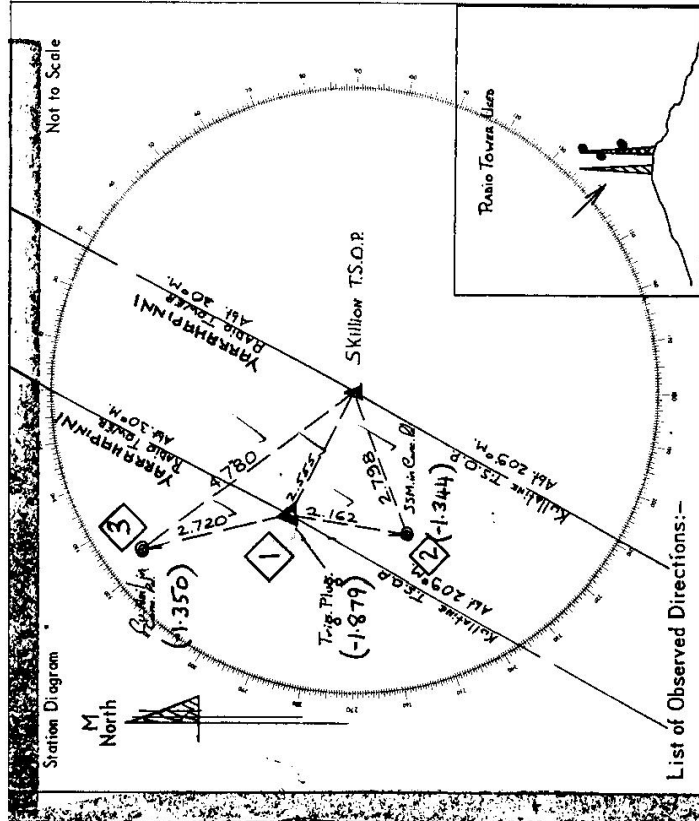


STATION SKILLION T.S.O.P. TS 5563

Owners Name.....
 Current Occupant.....
 Address.....
 Address.....

Access 2,3/6/1976

KM. DIRECTION
 0.00 WEST KEMPSEY RD. TRAVELLING TOWARD WILLAWARRIN.
 16.20 TURN RIGHT SIGN 'JACKS CROSSING' AND THROUGH
 WOODEN RAIL GATE
 16.40 CROSS CREEK
 17.15 TAKE R.H. TRACK
 17.40 DOUBLE WOODEN GATE
 17.55 TURN RIGHT
 17.65 THROUGH WIRE GATE
 19.30 FENCE - LET DOWN DRIVE THROUGH
 19.40 TRIG



List of Observed Directions:-

Station	Direction	Station	Direction
KULLATINE T.S.O.P.	359 59 60	KULLATINE T.S.O.P.	359 59 60
SSM in Conc. Pl.	89 49	Cr. Hill in Conc. Pl.	137 12
Trig. Plug (Signal)	81 13	YARRAPPINI RADIO TOWER	174 40 28
Cr. Hill in Conc. Pl.	113 03	Pillar Signal	267 14
YARRAPPINI RADIO TOWER	178 39 15	SSM in Conc. Pl.	339 30

Handwritten notes and markings on the right side of the page, including a large '1' and some illegible scribbles.