

LOCALITY SKETCH PLAN



TS 4709 Weltie

Local Government Area CobarTown/Suburb/Locality Cobar

Office Use - Barcode Including Number Inserted Here

Approx MGA Coordinate: Zone

Description of Mark

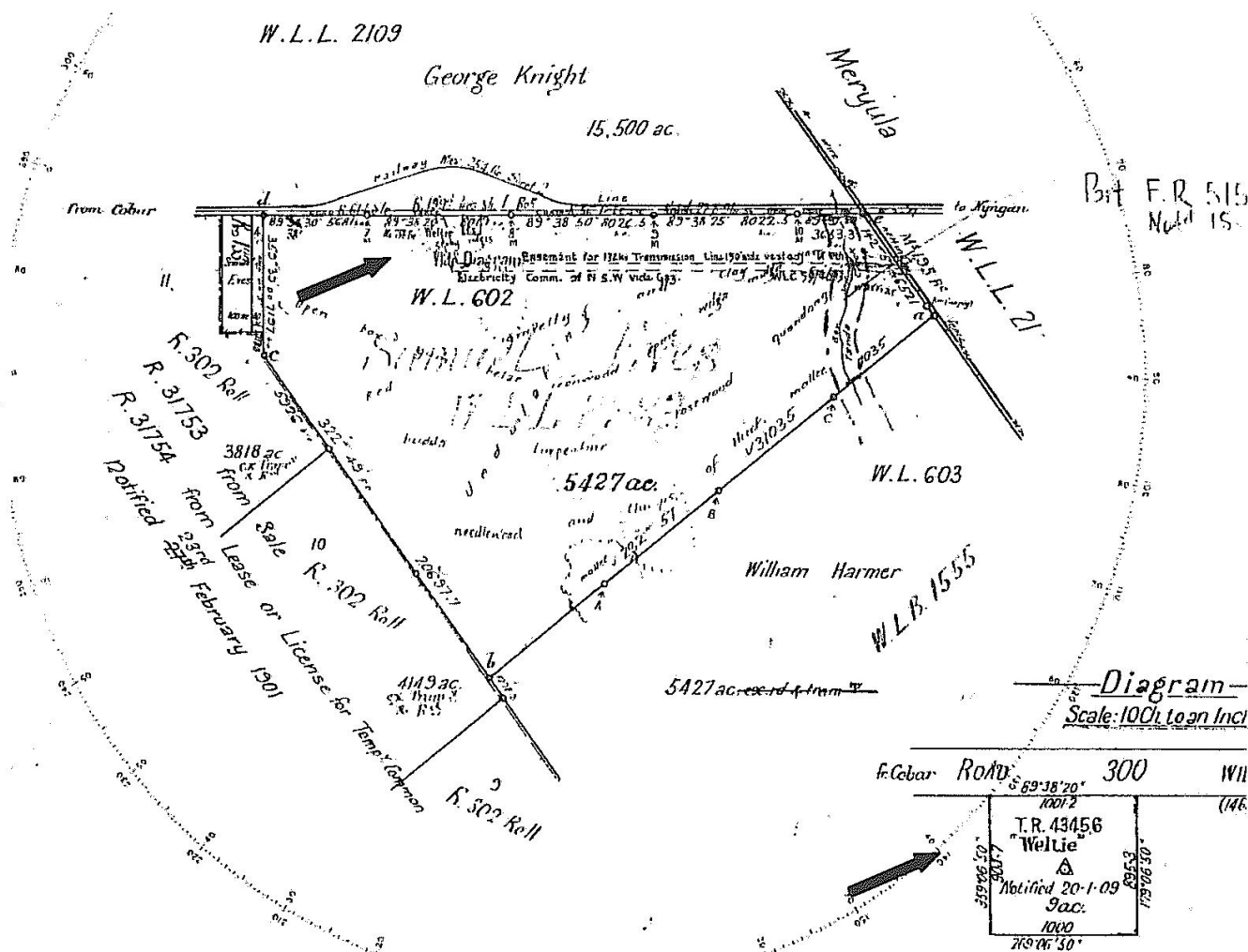
Image of Weltie Trig Reserve
below from
DP 761556 -W.L Por 602

E:

N:

CIRCA 1962 MAST AND VANES ON GROUND CAIRN IN POOR CONDITION, SSM PLACED.

CIRCA 1964 TRIG REPILED MAST AND VANES PLACED OVER ORIGINAL PLUG.



Please use black ink only

SURVEYING REGULATION			
MARK	AHD	SOURCE	DATE
HEIGHT DETERMINED BY - DIFF. LEVELLING (Specify) - TRIG HEIGHTING			
ADOPTED MARKS - GPS			

Measurements are in links

TS 4709 Weltie

PM
Replaces
SS

I certify that the mark has been placed/found and numbered as detailed hereon.

Signed: _____

Name: _____

Organisation placing mark: _____

Date mark placed/found: 1 / 1

Ref: _____