

CENTRAL MAPPING AUTHORITY
Department of Lands

Trigonometrical Survey of N.S.W.

RECONNAISSANCE and MAINTENANCE REPORT

STATION **TUPA** TS **4474**

This Trig. Station has been:-

Note: Cross out word or words which do not apply

1. Completely cleared to permit 360° vision to surrounding Trigs.
2. Cleared by vanes bearing..... from Trig. Mast
3. Trig. Mast & Vanes have been painted white & black respectively.
4. The Trig. was unpiled/not unpiled, dimensions now being: *Original Station Mark found, not visible*

Description of mark. ~~Brass disc~~..... should be explicit, e.g. Steel plug, Brass plug, Bolt, G.I. Pipe

Height of mark..... m ^{above} _{below} rock/concrete..... m ^{above} _{below} G.L.

Height of Top Vanes to Top Mark..... m. Diameter of Vanes (vertical)..... m.

Height of Cairn..... m. Diameter of Cairn..... m.

Length of Mast..... m. (approximate if not unpiled)

5. A..... set in conc./rock has been placed..... m. bearing.....°M from Trig. Mast

6. A..... set in conc./soil has been placed..... m. bearing.....°M from Trig. Mast

7. A..... set in conc./soil has been placed..... m. bearing.....°M from Trig. Mast

8. A..... set in conc./rock has been placed..... m. bearing.....°M from Trig. Mast

9. Connection..... to..... m. bearing.....°M

10. Connection..... to..... m. bearing.....°M

11. Connection..... to..... m. bearing.....°M

12. Connection..... to..... m. bearing.....°M

13. Diff. Ht. is..... m. ^{above} _{below}

14. Diff. Ht. is..... m. ^{above} _{below}

15. Diff. Ht. is..... m. ^{above} _{below}

16. Diff. Ht. is..... m. ^{above} _{below}

Prepared by:

Checked:

Noted on U.T.M. Card

Co: _____ Ph: _____

Map Sheet: **SLALBANS** No: **9031**

Inspected by: _____ Date: _____

Authority: _____ Field Book: _____

Beacon Diagram: _____ Not to Scale

Date: _____ Record of Station

1942 Station Established

Checked

LOCALITY SKETCH PLAN



Local Government Area **Yass**

Town/Suburb/Locality **Yass River**

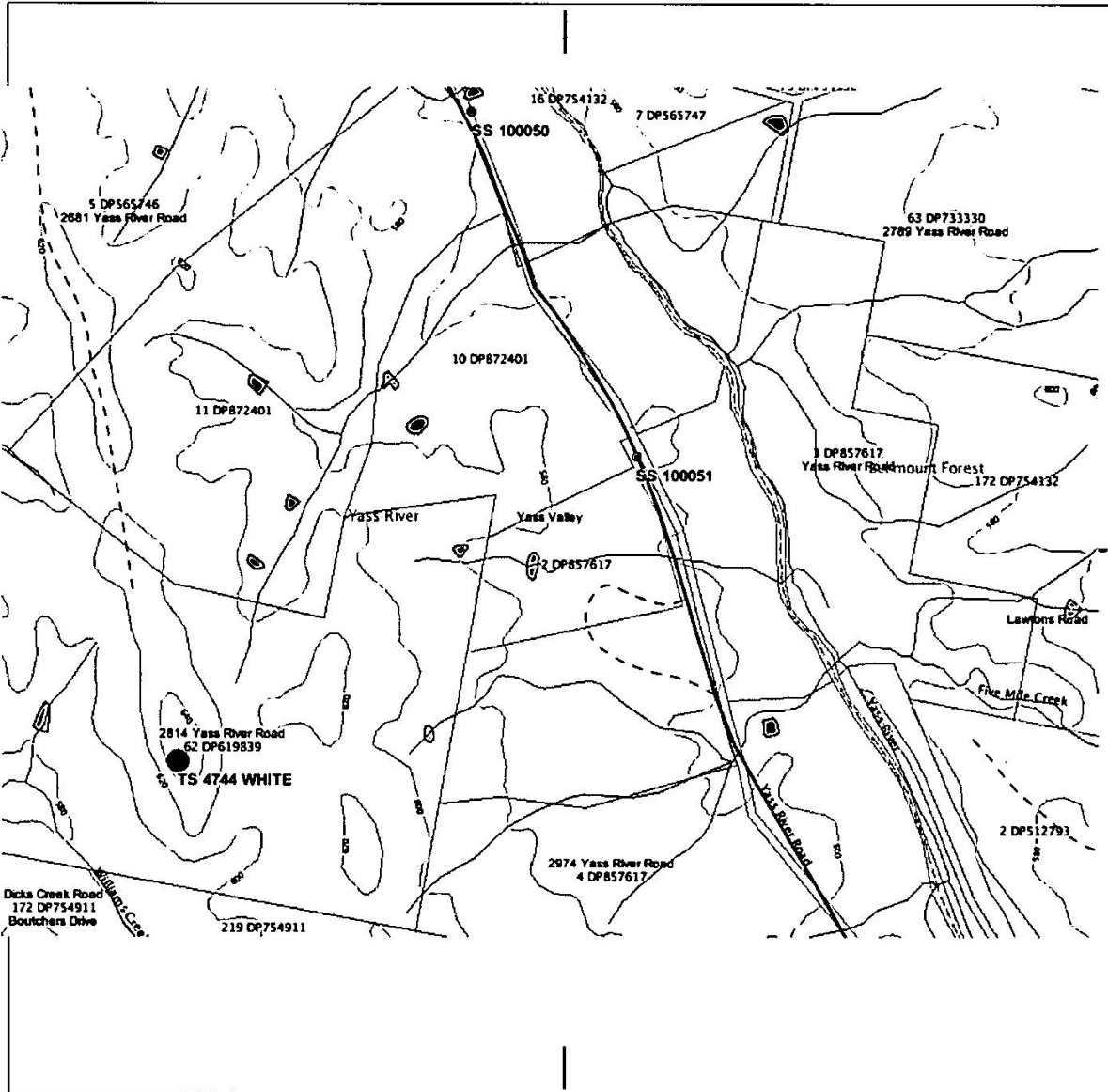
TS4474

Approx MGA Coordinate: Zone

Description of Mark **Round Post , Cairn Vanes**

E:

N:



Please use black ink only

SURVEYING REGULATION			
MARK	AHD	SOURCE	DATE
HEIGHT DETERMINED BY		- DIFF. LEVELLING	
(Specify)		- TRIG HEIGHTING	
ADOPTED MARKS		- GPS	

Measurements are in metres

TS 4474 White

PM

Replaces

SS

I certify that the mark has been placed/ found and numbered as detailed hereon.

Signed:

Name:

Organisation placing mark:

Date mark placed/ found: / /

Ref: