

75-03

Department of Lands

Integral Survey of N.S.W.

RECONNAISSANCE and MAINTENANCE REPORT 4394

STATION TOMAH TS

4394

This Trig. Station has been:

Note: Cross out word or words which do not apply

Co: COOK Ph: IRVINE

Map Sheet: KATOOMBA

No: 8930.

Inspected by: L.M HAYES

Date: MARCH 1976

Authority: DEPT LANDS.

Field Book: 68L 93

1. Completely cleared to permit 360° vision to surrounding trig.

2. Cleared by lanes bearing  $270^\circ - 360^\circ$  from Trig. Mast

3. Trig. Mast & Vanes have been painted (max. size Vanes: black in need of painting (max. size Vanes: black) ~~white & black respectively.~~

4. The Trig. was unpiled/~~not unpiled~~, dimensions now being:

Description of mark: ~~st. steel pin~~ should be explicit, e.g. Steel plug, Brass plug, Bolt, Concrete Pillar

Height of mark: 0.10 m above rock/concrete 0.10 m below G.L.

Height of Top Vanes to Top Mark/Top of pillar: 5.02 m Diameter of Vanes (vertical) 0.92 m.

Height of Cairn: m. Diameter of Cairn: m.

Length of Mast: 2.97 m. (approximate if not unpiled)

5. A. S.S.M. ~~set in concrete has been placed~~ <sup>not found</sup> m. bearing  $0^\circ$  from Trig. Mast/pillar

6. A. DUMPY set in conc./soil has been placed  $19.384$  m. bearing  $315^\circ$  from Trig. Mast/pillar

7. A. set in conc./soil has been placed  $fd$  m. bearing  $0^\circ$  from Trig. Mast/pillar

8. A. set in conc./rock has been placed  $fd$  m. bearing  $0^\circ$  from Trig. Mast/pillar

9. Connection: to m. bearing  $0^\circ$

10. Connection: to m. bearing  $0^\circ$

11. Connection: to m. bearing  $0^\circ$

12. Connection: to m. bearing  $0^\circ$

13. Diff. Ht. DUMPY is 0.12 m. <sup>above</sup> ~~below~~ st. steel pin

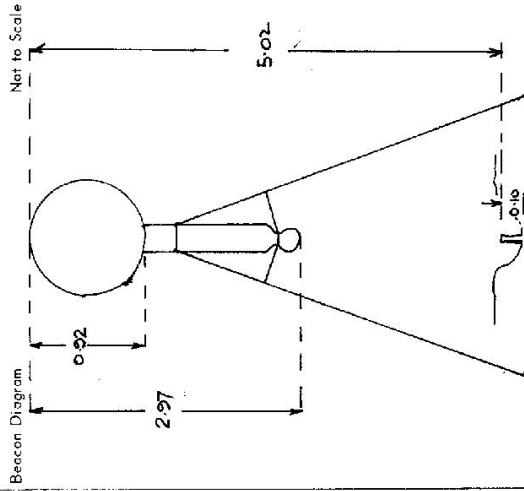
14. Diff. Ht. is m. <sup>above</sup> ~~below~~

15. Diff. Ht. is m. <sup>above</sup> ~~below~~

16. Diff. Ht. is m. <sup>above</sup> ~~below~~

Prepared by: L.M HAYES.

Checked: P.R. SATTN



Date: 7/1/78  
Record of Station: Vanes Destroyed

STATION TOMAH TS 4394

Owners Name: ..... Current Occupant: .....

Address: ..... Address: .....

Access: **March M76**  
**CONVENTIONAL VEHICLE**

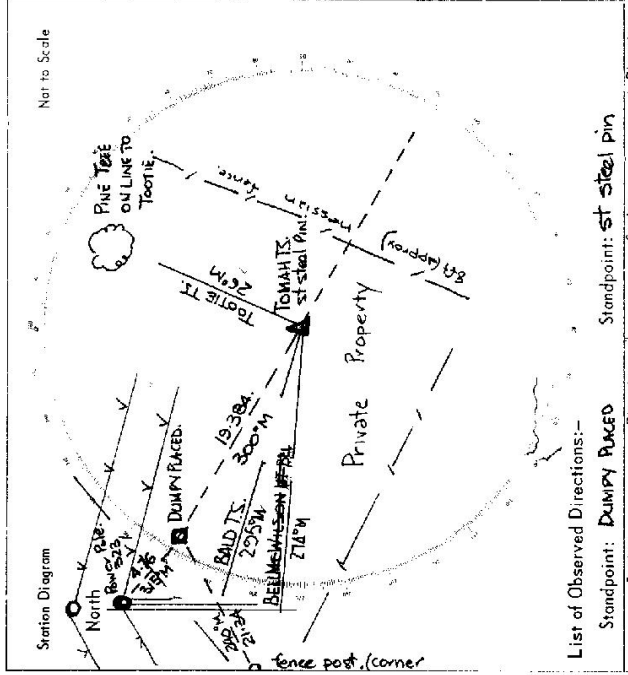
0.00 kms SHELL SERVICE STATION, BILPIN ON BELL LINE OF ROAD.  
 continue towards LITTLETON

0.35 BILPIN P.O signpost AT LEFT continue on Bell Line of Road

9.95 BECAMBING TOWNSHIP. " " " " "

13.60 TURN RIGHT SKYLINE ROAD.

13.85 TOMAH TS. AT RIGHT ON PRIVATE PROPERTY.  
 (30 metre walk to T.S.)



List of Observed Directions:-

Station	Direction	Station	Direction
TOOTIE TS (SSM)	359° 59' 60"	BELL T.S.	357° 59' 60"
BELL T.S.	244° 25' 57.3"	BALD T.S.	18° 45' 24.5"
BALD T.S.	263° 13' 11.8"	DUMPY PLACED	27° 01' 17.2"

Standpoint: DUMPY RAGED

Standpoint: st steel pin

Station	Direction	Station	Direction