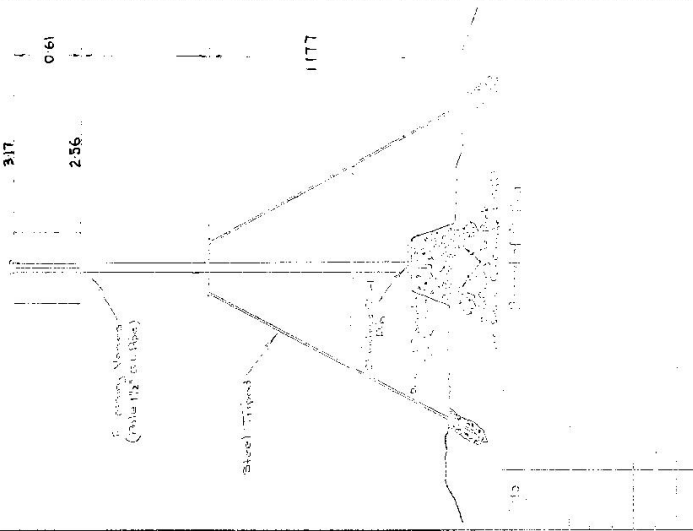


TS 4004 (35)
STATION S 35

Co: CAMDEN Sh: BUDDEROO
Map Sheet: KANGAROO VALLEY CMA 125000 Trig: 9018-IV-S
Respected by: 1066
Authority: M.V. 13 & 13 68 Trig. Mark:
Beacon Diagram: Not to Scale



Trigonometrical Survey of N.S.W.
RECONNAISSANCE and MAINTENANCE REPORT

This Trig. Station has been: *Note: Cross out any words which do not apply*

1. Completely destroyed by lightning.
 2. Cleared by local surveyors.
 3. Trig. Mark & Vane damaged. **SEE OVER** from Trig. Mast
 4. The Trig. was replaced with a 1.5m x 1.5m x 1.5m concrete block. Description of mark: **STAINLESS STEEL PIN IN CONC. BLOCK** should be explicit, e.g. Steel plug, Brass plug, P.V. G.I. Pipe
- Height of mark: m above rock/concrete m below G.L.
 Height of Top Vane to Top of Mark: m. Diameter of Vane (vertical): 0.4 m.
 Height of Coin: m. Diameter of Coin: m.
 Length of Mast: m. (approximate if not supplied)
5. A connection to cone/rock has been placed: m. bearing: 9M from Trig. Mast
 6. A connection to cone/rock has been placed: m. bearing: 9M from Trig. Mast
 7. A connection to cone/rock has been placed: m. bearing: 9M from Trig. Mast
 8. A connection to cone/rock has been placed: m. bearing: 9M from Trig. Mast

9. Connection to: m. bearing: 9M
 10. Connection to: m. bearing: 9M
 11. Connection to: m. bearing: 9M
 12. Connection to: m. bearing: 9M
 13. Diff. Ht. m. above m. below
 14. Diff. Ht. m. above m. below
 15. Diff. Ht. m. above m. below
 16. Diff. Ht. m. above m. below
- Prepared by: Checked: *Noted on U.T.M. Grid*

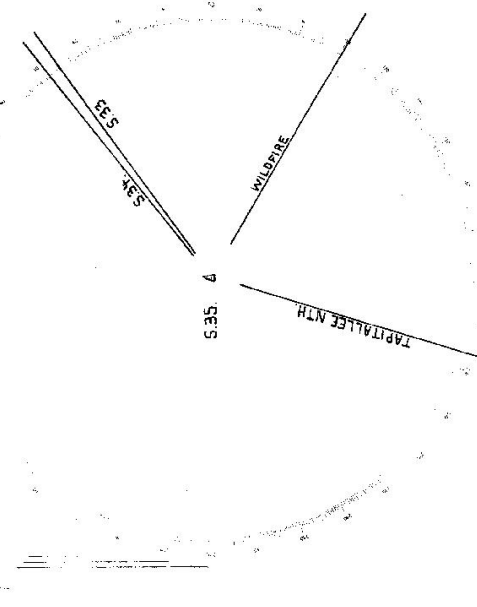
S.35

TS 4004

Owners Name:

Address:

Map to Scale



List of Observed Distances:

Standpoint: S.35

Station	Distance
S.35	0'00" 0'00"
WILDFIRE	2'06" 29'63"
TAPITALLEE NTH	5'4" 169'00" 17'38"
	144'47" 31'39"

Mean 10 Sets (1Set=FL/R)

