

CENTRAL MAPPING AGENCY OF
INDIA

Trigonometrical Survey of I.S.W.

Proprietary of

RECONNAISSANCE and MAINTENANCE REPORT

This Trig. Station has been:-

Noted. Corrected word or words which do not apply

1. Checked by level by spirit level to top of Trig.
2. Checked by tapes bearing. See Over. from Trig. Mast
3. Trig. Mast & V-arms have been painted white & black respectively.
4. The Trig. was in fair condition, dimensions now being: *Steel Plug, Brass Plug, Bolt, G.I. Pipe*

Description of mark: *Steel, Pt. m. Concrete, Block* should be explicitly e.g. *Steel plug, Brass plug, Bolt, G.I. Pipe*

Height of mark: *in above below* m. *rock/concrete* m. Diameter of V-arms (vertical) *0.61* m.

Height of Top V-arms to Top Mark: *in above below* m. Diameter of Cairn: m.

Length of Mast: m. (specify if not supplied)

5. A. *set in concrete/rock* has been placed. m. bearing. m. from Trig. Mast
6. A. *set in concrete/soil* has been placed. m. bearing. m. from Trig. Mast
7. A. *set in concrete/soil* has been placed. m. bearing. m. from Trig. Mast
8. A. *set in concrete/rock* has been placed. m. bearing. m. from Trig. Mast

9. Connection: to: m. bearing. m.
10. Connection: to: m. bearing. m.
11. Connection: to: m. bearing. m.
12. Connection: to: m. bearing. m.

13. Diff. Ht. is: m. *above below*
14. Diff. Ht. is: m. *above below*
15. Diff. Ht. is: m. *above below*
16. Diff. Ht. is: m. *above below*

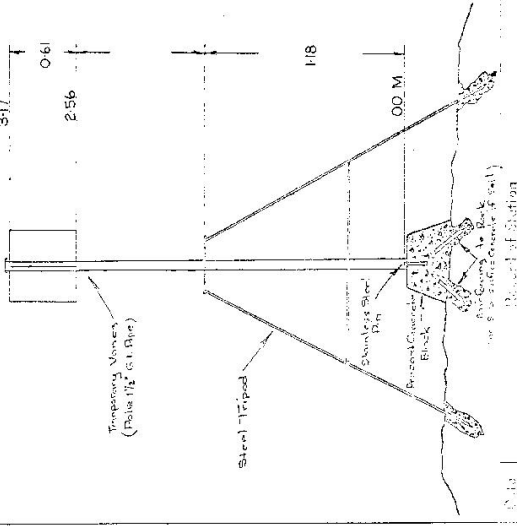
Checked: *Noted on U.T.M. Cord*

TS 3996 (25)

STATION S25

Co: CAMDEN
Map Sheet: KANGAROO VALLEY CMA. 1125000
Authority: M.V.S. & D.D.
Date: 1966
Field Book:

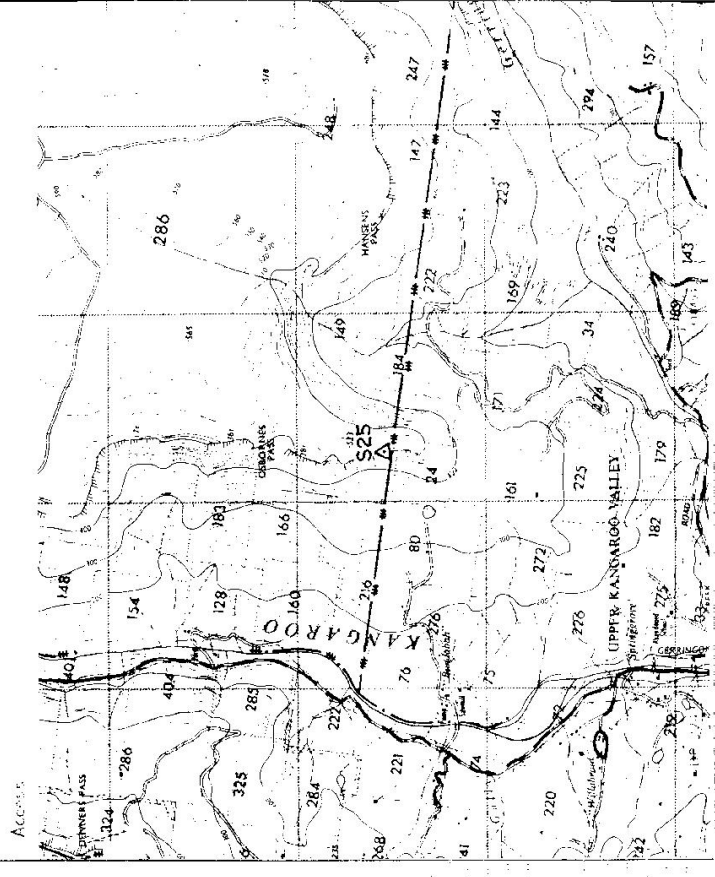
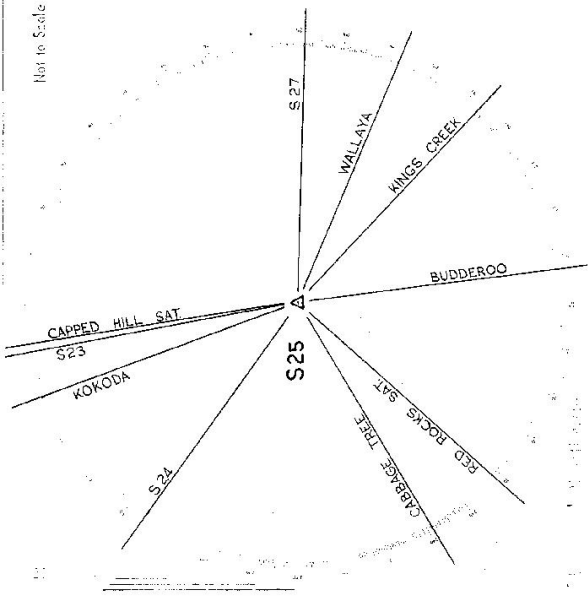
Beacon Diagram
Not to Scale
347
256
0.61



Checked:

TS 3996 STATE S25

Owner's Name:
 Add:



Section: S25

Section	Mag. Dip	Mag. Dip
S27	0° 00' 00.00"	
WALLAYA	S12 21° 21' 20.70"	
KINGS CREEK	S28 141° 42' 53.31"	
BUDDEROO	S13 81° 32' 49.24"	
RED ROCKS SAT	S6 130° 36' 01.69"	
CABBAGE TREE	S26 148° 13' 12.99"	
S24	S21 213° 27' 25.01"	
KOKODA	S21 224° 49' 53.88"	
S23	S25 258° 15' 59.86"	
CAPPED HILL SAT	S15 259° 31' 03.12"	

MEAN TO SETS (SET - F.L.R)