

CENTRAL ADAPTS AUTHORITY  
Department of Lands

Trigonometric Survey of N.S.W.  
RECONNAISSANCE and MAINTENANCE REPORT

TS 3995 (S 24)  
STATION S24

This Trig. Station has been:-

Note: Cross out word or words which do not apply

1. Completely cleared to get a 360° vision to surrounding Trigs.
2. Cleared by Jones bearing ..... See Over ..... from Trig. Mast
3. Trig. Mast & Vanes have been painted white & black respectively.
4. The Trig. was upright / not upright, diameter of top being: Original is 100 mm Black Band / not from 8

Description of mark: **Steinless Steel** ... should be explicit, e.g. Steel plug, Brass plug, Bell, G.I. Pipe

Height of mark ..... m <sup>above</sup> / <sub>below</sub> G.L. Diameter of Vanes (vertical) ... 0.01 m.

Height of Top Vanes to Top Mark ..... m.

Height of Mast ..... m. Diameter of Cairn ..... m.

Length of Mast ..... m. (specify if not upright)

5. A ..... set in concrete has been placed ..... m. bearing ..... 0M from Trig. Mast
6. A ..... set in concrete has been placed ..... m. bearing ..... 0M from Trig. Mast
7. A ..... set in concrete has been placed ..... m. bearing ..... 0M from Trig. Mast
8. A ..... set in concrete has been placed ..... m. bearing ..... 0M from Trig. Mast

9. Connection ..... to ..... m. bearing ..... 0M

10. Connection ..... to ..... m. bearing ..... 0M

11. Connection ..... to ..... m. bearing ..... 0M

12. Connection ..... to ..... m. bearing ..... 0M

13. Diff. Ht. .... is ..... m. <sup>above</sup> / <sub>below</sub>

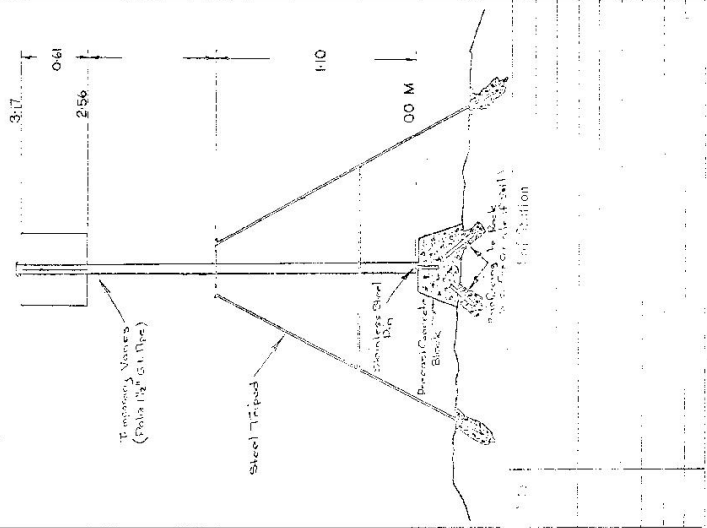
14. Diff. Ht. .... is ..... m. <sup>above</sup> / <sub>below</sub>

15. Diff. Ht. .... is ..... m. <sup>above</sup> / <sub>below</sub>

16. Diff. Ht. .... is ..... m. <sup>above</sup> / <sub>below</sub>

Page 1 of 2 Checked Noted on U.T.M. Grid

Co: CAMDEN  
Map Sheet: KANGAROO VALLEY GWA. 1:25000  
No: 9028-IV-S  
Inspected by: 1965  
Authority: M.V.S. & D.B.  
Station Description: Beacon Disposition

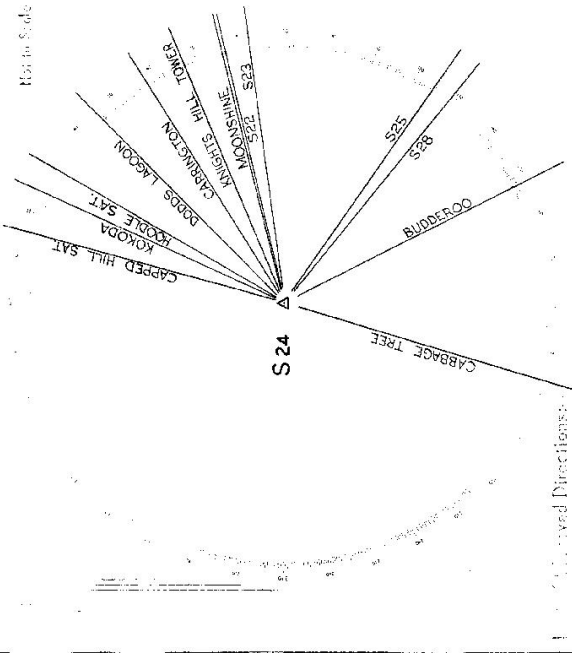
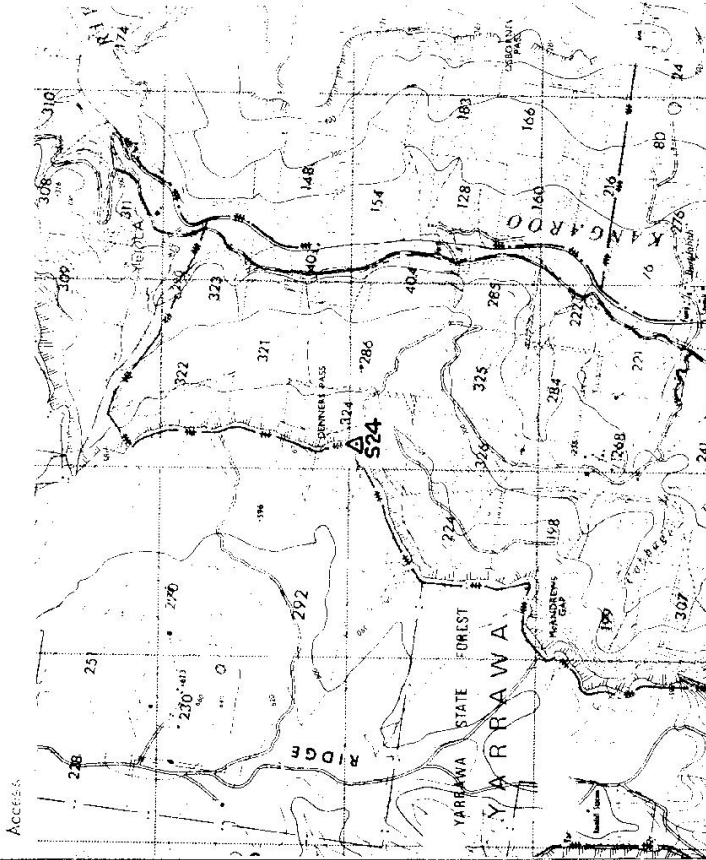


Checked

TS 3995 S 24

Owner's Name: \_\_\_\_\_

Address: \_\_\_\_\_



Station: S24

Point	Bearing	Distance
CAPPED HILL SAT	S15 0° 00' 00.00"	S28 103° 27' 55.46"
KOKODA	S21 9° 01' 56.88"	S13 137° 38' 09.22"
HOODLE SAT	S7 14° 29' 52.70"	S56 160° 55' 00.54"
DODDS LAGOON	S19 19° 29' 45.42-54"	
CARRINGTON	S18 42° 24' 19.44"	
KNIGHTS HILL TWR	S11 51° 26' 06.83"	
MOONSHINE	S20 60° 27' 01.13"	
S22	61° 05' 28.77"	
S23	66° 22' 28.75"	
S25	109° 17' 04.46"	

MEAN 10 SETS (1 SET = FLTR)