

CENTRAL MAPPING AUTHORITY  
Department of Lands

Trigonometrical Survey of N.S.W.

RECONNAISSANCE and MAINTENANCE REPORT

This Trig. Station has been:-

Note: Cross out word or words which do not apply

1. Completely cleared to permit 360° of visibility including Trig.
2. Cleared by lines bearing ..... See Over
3. Trig. Mast & Vanes have been painted black ..... black respectively.
4. The Trig. was unpiled/not unpiled, descriptions now being: (e.g. Mast: Station; Mark found / not found / Description of mark: Stainless Steel Pin in Concrete Block, should be explicit, e.g. Steel plug, Brass plug, Bell, G.L. Pipe

Height of mark..... m <sup>above</sup> <sub>below</sub> rock/concrete ..... m <sup>above</sup> <sub>below</sub> G.L.  
 Height of Top Vanes to Top Mark..... m. Diameter of Vanes (vertical) . . . . . 0.61..... m.

Height of Cairn..... m. Diameter of Cairn..... m.

Length of Mast..... m. (approximate if not unpiled)

5. A..... set in conc/rock has been placed..... m. bearing.....°M from Trig. Mast
6. A..... set in conc/soil has been placed..... m. bearing.....°M from Trig. Mast
7. A..... set in conc/soil has been placed..... m. bearing.....°M from Trig. Mast
8. A..... set in conc/rock has been placed..... m. bearing.....°M from Trig. Mast

9. Connection..... to..... m. bearing.....°M
10. Connection..... to..... m. bearing.....°M
11. Connection..... to..... m. bearing.....°M
12. Connection..... to..... m. bearing.....°M

13. Diff. Ht. .... is..... m. <sup>above</sup> <sub>below</sub>
14. Diff. Ht. .... is..... m. <sup>above</sup> <sub>below</sub>
15. Diff. Ht. .... is..... m. <sup>above</sup> <sub>below</sub>
16. Diff. Ht. .... is..... m. <sup>above</sup> <sub>below</sub>

Prepared by: .....

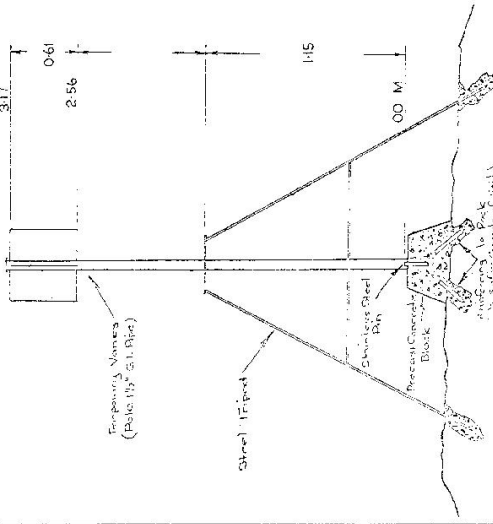
Checked: .....

Noted on U.T.M. Card

TS 3994 ( = 23 )  
STATION S 23

Ce: CAMBEN Pht: WALLAYA  
 Map Sheet: KANGAROO VALLEY CMA. 1125000 No: 902B-IV-S  
 Inspected by: Date: 1966  
 Authority: M.W.S. & O.B. Field Book:

Branson Diagram Not to Scale



Date .....

Checked

S.23

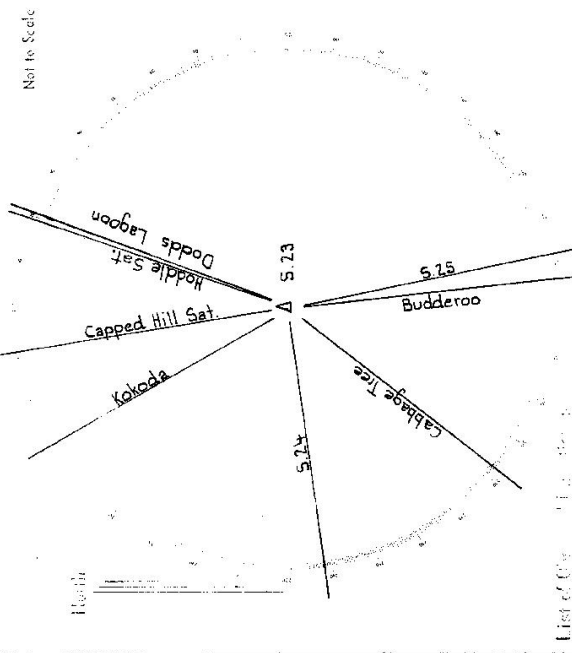
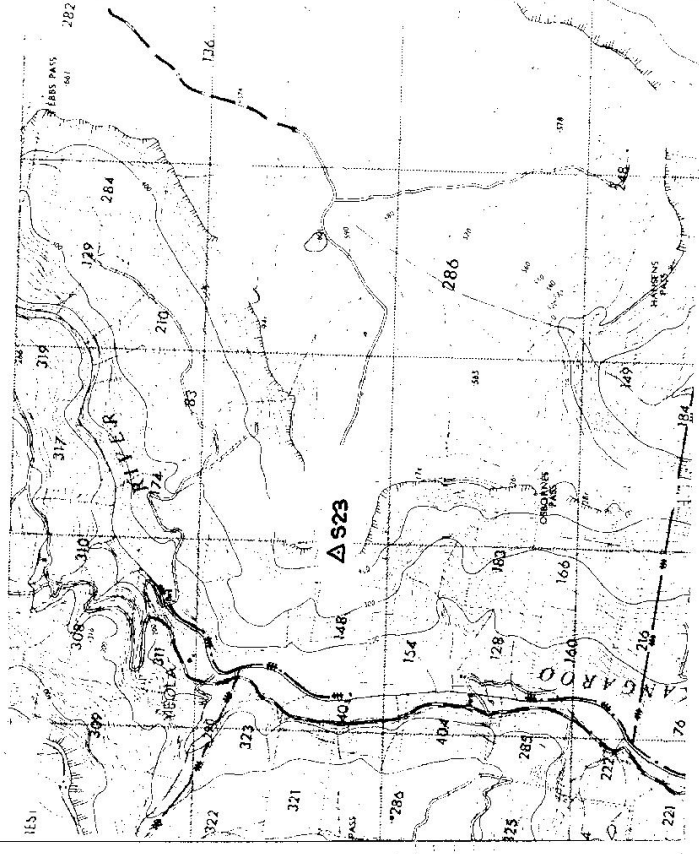
TS 3994

STATION

Owner: Name

Address

Access



List of Observations

Station	Distance	Direction
S.23		
KOKODA	5.21	309°35'16.51"
CAPPED HILL SAT	5.15	831°38'17.87"
DODDS LAGOON	5.19	149°50'53.88"
BUDDEROO	5.13	152°03'30.37"
CABBAGE TREE	5.16	195°15'45.38"
HODDLE SAT	5.99	0°00'00.00"

Mean 10 sets (15 set TL FR)