

RECONNAISSANCE and MAINTENANCE REPORT

STATION S22

Co: CAMDEN
Map Sheet: KANGAROO VALLEY CMA. 1:25000
Inspected by: M.W.S. & D.B.
Authority: M.W.S. & D.B.
Date: 1966
Field Book: [Blank]
P.O: WALLAYA
No: 902B-N-S

This Trig. Station has been: [Blank]

1. Completely cleared for [Blank]
2. Cleared by [Blank] See Over [Blank] from Trig. Mast
3. Trig. Mast & Vases have been [Blank] respectively.
4. The Trig. was [Blank] by [Blank] Transitions now being: [Blank] Description of mark: **Stainless Steel, Pin in Concrete Block**, should be explicit, e.g. Steel plug, Brass plug, Bolt, G.I. Pipe

Height of mark..... m above rock/concrete m above G.L.
Height of Top Vases to Top Mark..... m. Diameter of Vases (vertical)..... m.

Height of Cairn..... m. Diameter of Cairn..... m.

Length of Mast..... m. (Approximate if not uplifted)

5. A..... to..... m. bearing..... m. from Trig. Mast
6. A..... to..... m. bearing..... m. from Trig. Mast
7. A..... to..... m. bearing..... m. from Trig. Mast
8. A..... to..... m. bearing..... m. from Trig. Mast

9. Connection..... to..... m. bearing..... m.

10. Connection..... to..... m. bearing..... m.

11. Connection..... to..... m. bearing..... m.

12. Connection..... to..... m. bearing..... m.

13. Diff. Ht. m. above below

14. Diff. Ht. m. above below

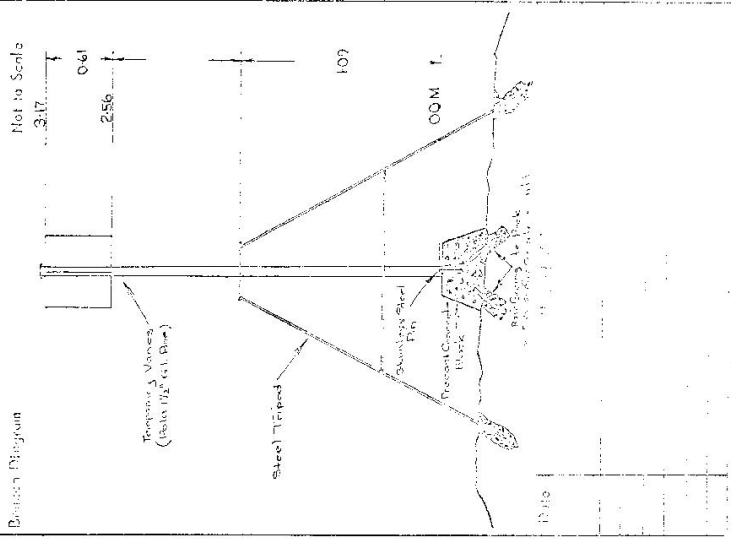
15. Diff. Ht. m. above below

16. Diff. Ht. m. above below

Prepared by: [Blank]

Checked by: [Blank]

Noted on U.T.M. Card



Checked by: [Blank]

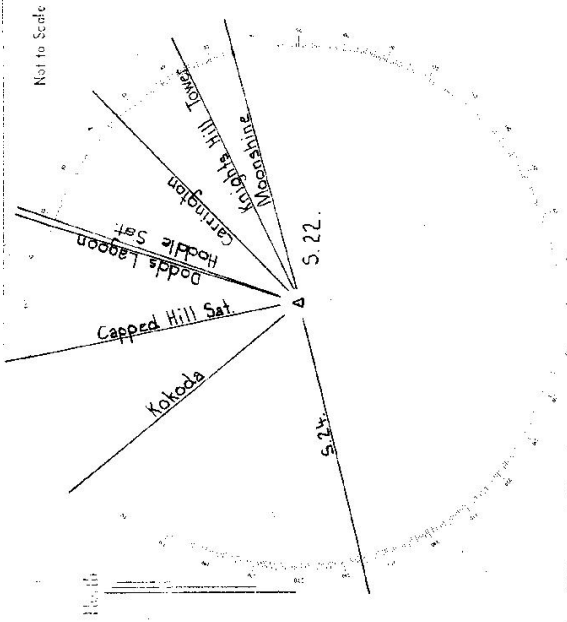
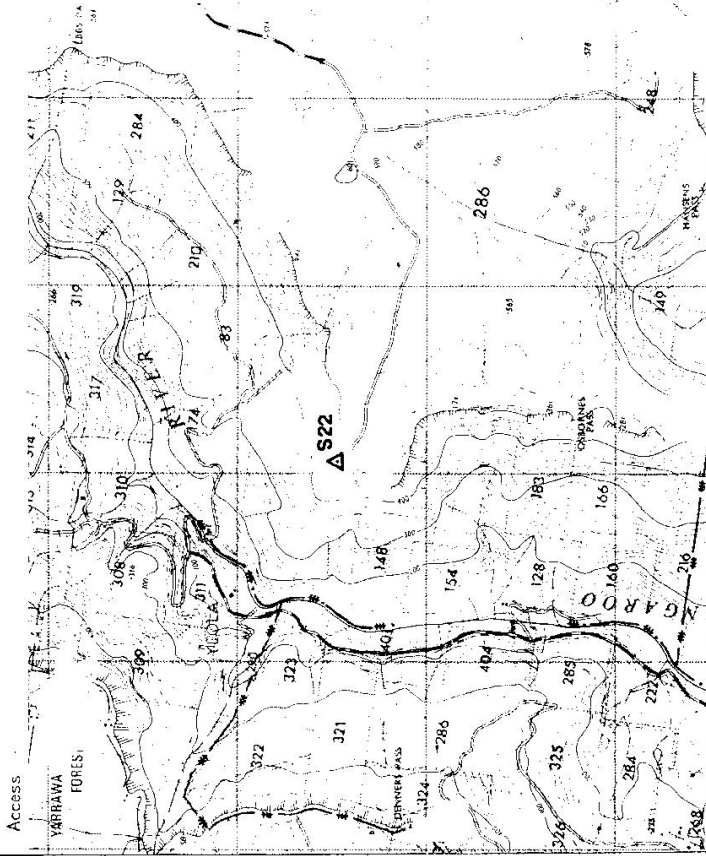
S.22

STATION

TS 3993

Owners Name:

Address:



List of Observed Directions:-

Station	Direction	Station	Direction
S.22	KOKODA	S.22	KOKODA
S.22	CAPPED HILL SAT.	S.22	CAPPED HILL SAT.
S.22	DODDS LAGOON	S.22	DODDS LAGOON
S.22	CARRINGTON	S.22	CARRINGTON
S.22	KNIGHTS HILL TOWER	S.22	KNIGHTS HILL TOWER
S.22	MOONSHINE	S.22	MOONSHINE

Mean IO Sets (1 Set = TL, TR)