

CENTRAL MAPPING AUTHORITY  
Department of Lands

Trigonometrical Survey of N.S.W.  
RECONNAISSANCE and MAINTENANCE REPORT

STATION **POPRAN (Pillar) TS 3782**

Co: **NORTHLIMBERLAND** Ph: **Eglington**  
Map Sheet: **GOSFORD** No: **9131-5**

Inspected by: **J. P. JACKSON** Date: **JULY 1974**  
Authority: **C.M.A. Trig Survey Division** File Book: **1355**

Beacon Diagram Not to Scale

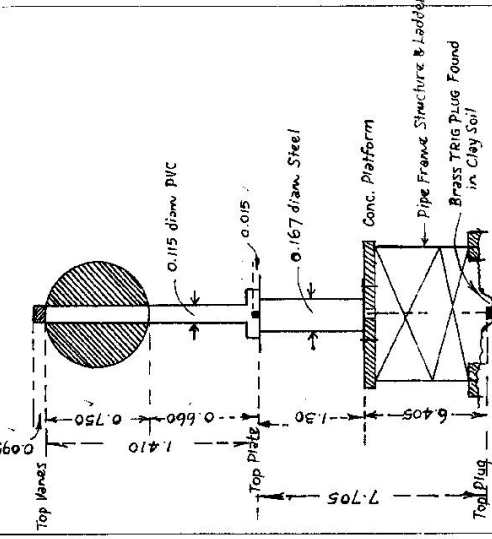
This Trig. Station has been:-

Note: Cross out word or words which do not apply

1. Completely cleared to permit 360° vision to surrounding Trigs.
2. Cleared by lances bearing 355° 32' 36" - 191° 25' 7" - 295° 1' M from Trig. Mast
3. Trig. Mast & Vanes have been painted white & black respectively. ✓
4. The Trig. was unpiled / not unpiled, dimensions now being:
  - Description of mark: **Steel Pillar, Plate & Pillar** ... should be explicit, e.g. Steel plug, Brass plug, Bolt, G.I. Pipe
  - Height of mark: **1.30** m above rock/concrete platform **6.4** m above G.L.
  - Height of Top Vanes to Top Mark: **1.410** m. Diameter of Vanes (vertical): **0.750** m.
  - Pillar Spigot is **0.015** m above Pillar Plate.
  - Height of Conn: \_\_\_\_\_ m. Diameter of Conn: \_\_\_\_\_ m.

5. A ..... m. (approximate if not unpiled)
6. A ..... set in conc/rock has been placed ..... m. bearing ..... M from Trig. Mast
7. A ..... set in conc/soil has been placed **13.575** m. bearing **354** M from Trig. Mast
8. A ..... set in conc/soil has been placed **13.205** m. bearing **293** M from Trig. Mast
9. A ..... set in conc/rock has been placed ..... m. bearing ..... M from Trig. Mast
10. Connection **G.I. PIPE to G.I. BUMPY** **13.685** m. bearing **232** M
11. Connection ..... to ..... m. bearing ..... M
12. Connection ..... to ..... m. bearing ..... M
13. Diff. Ht. **Brass Trig Plug Found** is **7.705** m. **Steel Pillar Plate Fd.**
14. Diff. Ht. **G.I. PIPE placed** is **7.62** m. **Steel Pillar Plate Fd.**
15. Diff. Ht. **G.I. BUMPY placed** is **8.025** m. **Steel Pillar Plate Fd.**
16. Diff. Ht. **G.I. PIPE placed** is **0.085** m. **Brass Trig Plug Found.**

Prepared by: **M. P. JACKSON** Checked: **[Signature]** 20/1/75  
Noted on U.I.M. Card



Date	Record of Station

Checked

7-4-94

TS - 3782

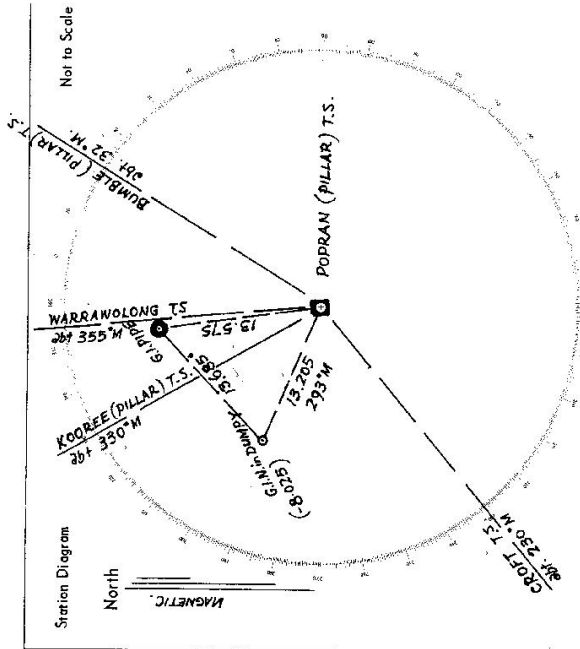
STATION POPRAN T.S. ELEVATED CONC. PLATFORM W/ IRON RAILS PILLAR.

Owners Name.....

Address.....

Current Occupant..... P.M.G.

Access July 1974



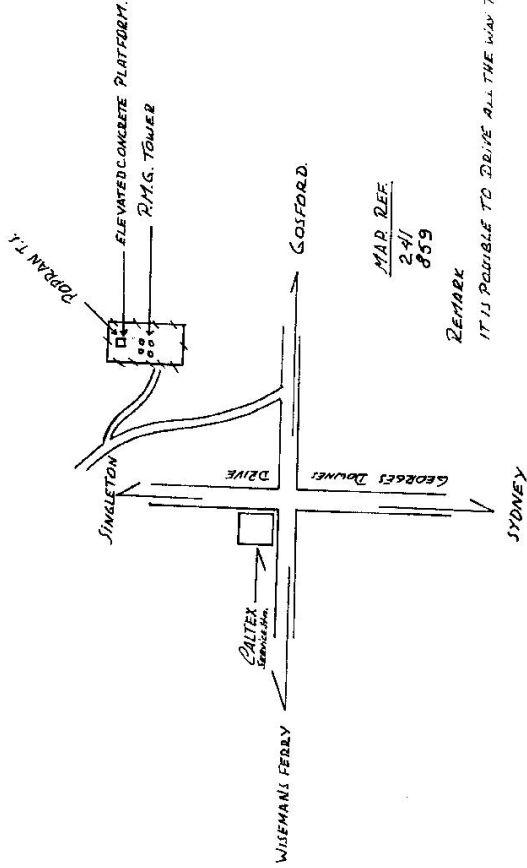
List of Observed Directions:-

Station	Direction	Station	Direction
WARRAWOLONG T.S.	359° 59' 60"	CROFT T.S.	359° 59' 60"
POP RAN PILLAR Fd.	177° 58' 20"	G.I. PIPE Placed	179° 52' 00"
POP RAN TRIG. PLUG Fd.	177° 58' 20"	POP RAN TRIG. PLUG Fd.	240° 21' 00"
G.I. NAIL in DUMPY Placed	235° 55' 00"	POP RAN PILLAR Fd.	240° 29' 00"
CROFT T.S.	236° 02' 58"		

Standpoint: G.I. NAIL in DUMPY placed

Station	Direction	Station	Direction
AT: POPRAN PILLAR Fd.			
KOORREE (PILLAR) T.S.	359° 59' 60"		
G.I. PIPE Placed	22° 26' 20"		
WARRAWOLONG T.S.	24° 28' 49"		
BUMBLE (PILLAR) T.S.	62° 20' 06"		
G.I. NAIL in DUMPY Placed	321° 00' 20"		



MAR REF  
24/ 859

REMARK

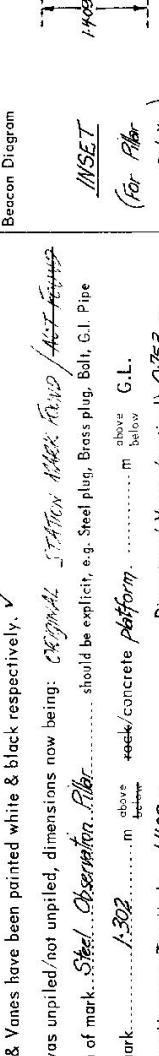
IT IS POSSIBLE TO DRIVE ALL THE WAY TO T.S. JTY

CENTRAL MAPPING AUTHORITY  
 Department of Lands  
 Trigonometrical Survey of N.S.W.  
 RECONNAISSANCE and MAINTENANCE REPORT  
 STATION **POPRAN O.P.** Ph: **EGLINGTON** TS **3782**  
 Co: **NORTHUMBERLAND** Map Sheet: **GOSFORD** No: **9131**

This Trig. Station has been:-  
 1. Completely cleared to permit 360° vision to surrounding Trigs.  
 2. Cleared by iron bearing  
 3. Trig. Mast & Vanes have been painted white & black respectively. ✓  
 4. The Trig. was unpiled/not unpiled, dimensions now being: **ORIGINAL STATION MARK FOUND / NOT FOUND**  
 Description of mark... **Steel Observation Pillar**... should be explicit, e.g. Steel plug, Brass plug, Bolt, G.I. Pipe  
 Height of mark... **1.302** m above ~~mark~~ **concrete platform**... m above ~~mark~~ **G.L.**  
 Height of Top Vanes to Top Mark... **1.409** m. Diameter of Vanes (vertical): **0.753** m.  
 Height of Centre... **1.41** m. Diameter of Centre... m.  
 Length of Mast... ~~0.656~~ m. (approximate if not unpiled)

5. **A Trig. Flag**... set in conc... has been placed... m bearing... from Trig. Mast  
**TBM 0659**  
 6. **A (G.I. Pipe)**... set in conc./soil has been placed... m bearing... from Trig. Mast  
 7. A... set in conc./soil has been placed... m bearing... from Trig. Mast  
 8. A... set in conc./rock has been placed... m bearing... from Trig. Mast  
 9. Connection... to... m. bearing... m  
 10. Connection... to... m. bearing... m  
 11. Connection... to... m. bearing... m  
 12. Connection... to... m. bearing... m  
 13. Diff. Ht. **ORIGINAL Trig. Plug** is **7.712** m. ~~above~~ **Pillar Plate**  
 14. Diff. Ht. **TBM 0659 (G.I. P.)** is **7.590** m. ~~above~~ **Pillar Plate**  
 15. Diff. Ht. is... m. ~~above~~ **Pillar Plate**  
 16. Diff. Ht. is... m. ~~above~~ **Pillar Plate**

Prepared by: **GOSWAMINASSY** 30/5/76 Checked: **Sag** 2d+1m. Noted on U.T.M. Card



Date	Record of Station

Checked

