

Department of Lands Integral Survey of N.S.W.
RECONNAISSANCE and MAINTENANCE REPORT

STATION **PEARCE** TS. (3688)
 Co: **CUMBERLAND** Ph: **PROSPECT**
 Map Sheet: **BLACKTOWN 1/10 000** No: **9160**
 Inspected by: **J. KWASNJICA** Date: **30-5-77**
 Authority: **ISD** Field Book: **535/3**
 Beacon Diagram Not to Scale

This Trig. Station has been:- Note: Cross out word or words which do not apply

1. Completely cleared to permit 360° vision to surrounding Trigs.
2. Cleared by lanes bearing..... from Trig. Mast
3. Trig. Mast & Vanes have been painted white & black respectively.
4. The Trig. was unpiled/not unpiled, dimensions now being:

Description of mark **Brass Plug** should be explicit, e.g. Steel plug, Brass plug, Bell Concrete Pillar
 Height of mark.....m ^{above} rock/concretem ^{below} G.L.
 Height of Top Vanes to Top Mark/Top pillar plate.....m Diameter of Vanes (vertical).....m.
 Height of Cairn.....m. Diameter of Cairn.....m.
 Length of Mast.....m. (approximate if not unpiled)

5. A.....set in conc/rock has been placed/fd.....m. bearing.....°M from Trig. Mast/pillar
6. A.....set in conc/soil has been placed/fd.....m. bearing.....°M from Trig. Mast/pillar
7. A.....set in conc/soil has been placed/fd.....m. bearing.....°M from Trig. Mast/pillar
8. A.....set in conc/rock has been placed/fd.....m. bearing.....°M from Trig. Mast/pillar

9. Connection.....to.....m. bearing.....°M
10. Connection.....to.....m. bearing.....°M
11. Connection.....to.....m. bearing.....°M
12. Connection.....to.....m. bearing.....°M

13. Diff. Ht. is.....m. ^{above} ^{below}
14. Diff. Ht. is.....m. ^{above} ^{below}
15. Diff. Ht. is.....m. ^{above} ^{below}
16. Diff. Ht. is.....m. ^{above} ^{below}

Prepared by: Julian Kwasnjica 16/4/77. Checked: SL

Cover Box.

Date	Record of Station
30/5/77	New Cover Box, Traverse Connection

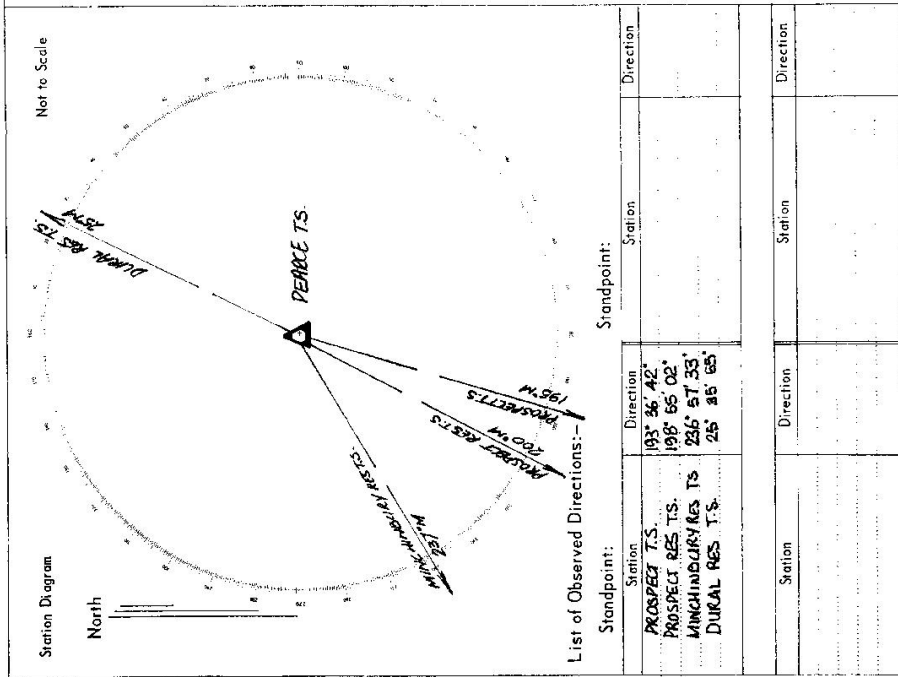
STATION **PEARCE T.S. 3688**

Current Occupant.....

Address.....

Owners Name **Council**

Address.....



ACCESS : UBD 36
M2

LOCALITY SKETCH PLAN



Local Government Area BLACKTOWN

Town/Suburb/Locality SEVEN HILLS

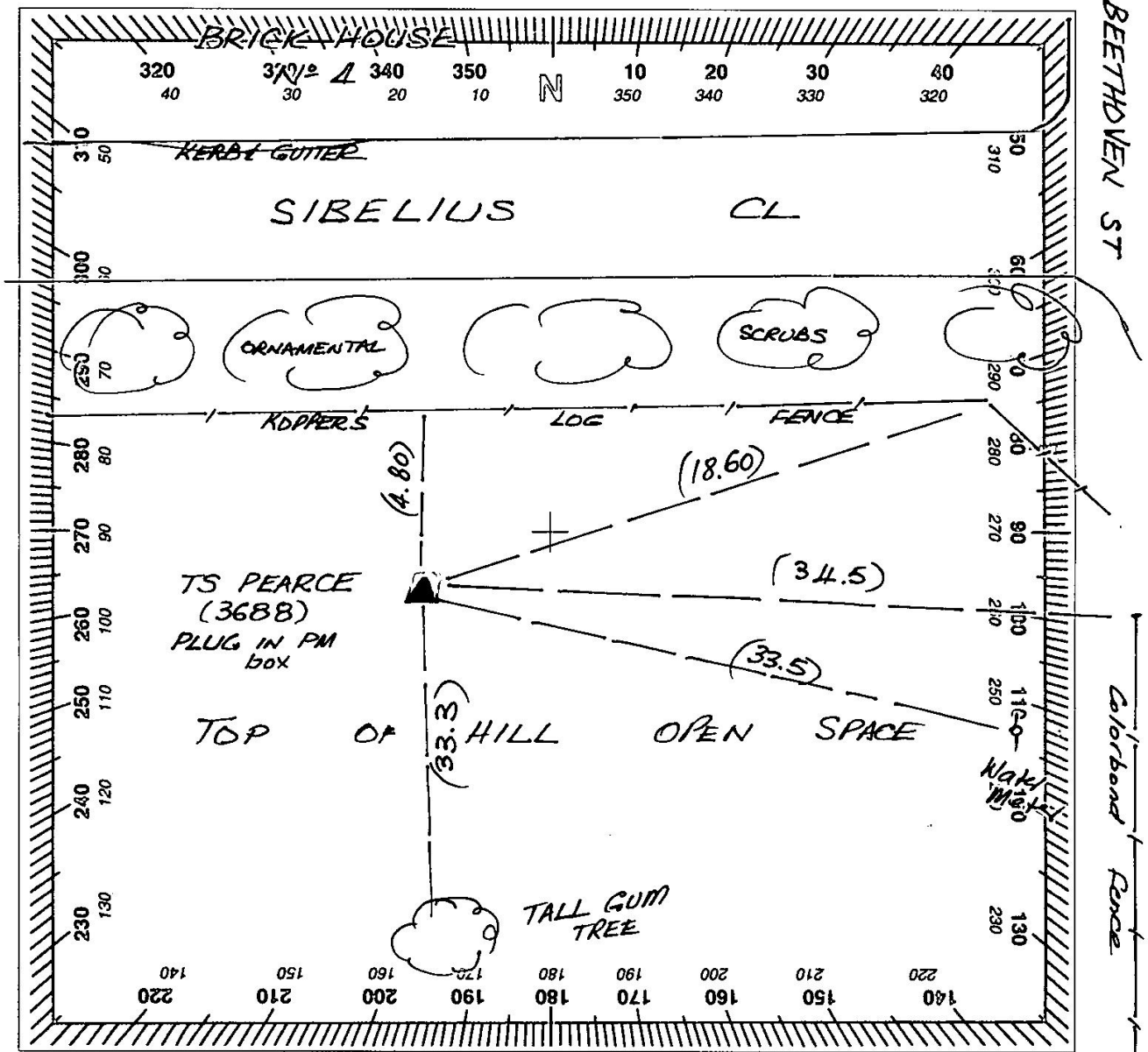
TS3688

Approx MGA Coordinate: Zone

Description of Mark TRIG PLUG

E:

N:



Please use black ink only

SURVEYING REGULATION			
MARK	AHD	SOURCE	DATE
HEIGHT DETERMINED BY (Specify)		- DIFF. LEVELLING	- TRIG HEIGHTING
ADOPTED MARKS		- GPS	

Measurements are in metres

PM TS PEARCE
SS TS 3688

PM

Replaces

SS

RESKETCH BY

I certify that the mark has been placed/ found and numbered as detailed hereon.

Signed: J. Knasnica

Name: J. KNASNICA

Organisation placing mark: LANDS

Date mark placed/ found: 6/9/06

Ref:

Department of Lands Integrat. Survey of N.S.W.
RECONNAISSANCE and MAINTENANCE REPORT

STATION **PEARCE T.S. (3688)**

This Trig. Station has been: Note: Cross out word or words which do not apply

1. Completely cleared to permit 360° vision to surrounding Trigs.
2. Cleared by lances bearing..... from Trig. Mast
3. Trig. Mast & Vanes have been painted white & black respectively.
4. The Trig. was unpiled/not unpiled, dimensions now being:

Description of mark: **Brass Plug**..... should be explicit, e.g. Steel plug, Brass plug, Bolt, Concrete Pillar
 Height of mark: m above rock/concrete m above G.L.
 Height of Top Vanes to Top Mark/Top pillar plate m Diameter of Vanes (vertical) m.
 Height of Cairn m. Diameter of Cairn m.
 Length of Mast m. (approximate if not unpiled)

5. A..... set in conc/rock has been placed/rd m. bearing °M from Trig. Mast/pillar
6. A..... set in conc/soil has been placed/rd m. bearing °M from Trig. Mast/pillar
7. A..... set in conc/soil has been placed/rd m. bearing °M from Trig. Mast/pillar
8. A..... set in conc/rock has been placed/rd m. bearing °M from Trig. Mast/pillar
9. Connection..... to..... m. bearing °M
10. Connection..... to..... m. bearing °M
11. Connection..... to..... m. bearing °M
12. Connection..... to..... m. bearing °M
13. Diff. Ht. is..... m. above below
14. Diff. Ht. is..... m. above below
15. Diff. Ht. is..... m. above below
16. Diff. Ht. is..... m. above below

Prepared by: *Sullivan Kershner* 16/4/77. Checked: *SP*

Co: CUMBERLAND		Ph: PROSPECT.	
Map Sheet: BLACKTOWN 1/10000	No: 9160		
Inspected by: J. KWASNIKA	Date: 30.5.77		
Authority: ISD	Field Book: 535/3		
Beacon Diagram	Not to Scale		

Cover Box.

Date	Record of Station
30/5/77	New Cover Box, Traverse Connection

