

GEODETIC STATION RECONNAISSANCE and MAINTENANCE REPORT

STATION: **NM/L192** No.: **3522**
 MAP SHEET SCALE 1:250 000 **WALGETT**
 INSPECTED BY: **D. FREDRIKSEN** DATE: **29/6/19**
 AUTHORITY: **C.M.A.** FIELD BOOK: **1572**

- Description: *Note: Cross out word or words which do not apply*
- Cleared by lanes bearing..... from Trig. Mast
 - Mast & Vanes have been painted white & black respectively.
 - The station/pillar was unpiled/not unpiled/constructed on.....19....., dimensions now being: Description of mark.....
 Height of mark.....m. above rock/concrete; Mark is.....m. above G.L.
 Height of Top Vanes to Top Mark/Pillar plate.....m. Diameter of Vanes (vertical).....m.
 Height of Cairn.....m. Diameter of Cairn.....m. Name Plate found/not found/placed.
 Length of Mast.....m. (approximate if not unpiled)
 - A.....cu.....tube.....set in conc/rock has been placed/found, bearing.....° M from Mast/Plug/Pillar
 - A.....cu.....tube.....set in conc/rock has been placed/found, bearing.....° M from Mast/Plug/Pillar
 - A.....cu.....tube.....set in conc/rock has been placed/found, bearing.....° M from Mast/Plug/Pillar
 - A.....cu.....tube.....set in conc/rock has been placed/found, bearing.....° M from Mast/Plug/Pillar
 - Action required:.....

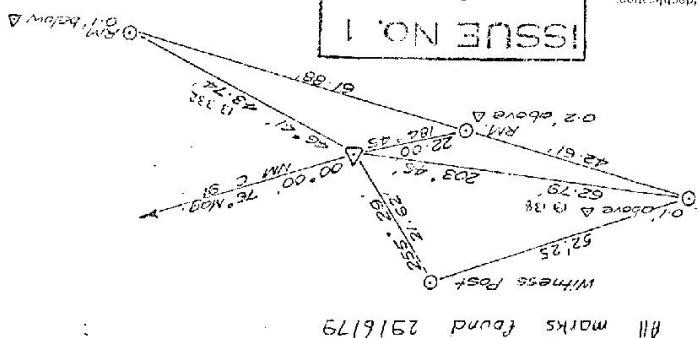
STANDPOINT: **NM/L192 Cu Tube**

Mark	Direction TRD	Horiz. Distance	Height Difference	Mark	Direction	Horiz. Distance	Height Difference
Cu Tube RM	291° 01'	19.138	above standpt.				above standpt.
Cu Tube	134° 00'	13.332	below standpt.				below standpt.
PP1 Tree 6m High 4m Cover	351°	149.4	below standpt.				below standpt.
PP2 2 Trees 6m High 3m Cover	353°	84.5	above standpt.				above standpt.
PP3 Tree 6m High 3m Cover	30°	88.0	below standpt.				below standpt.
PP4 Tree 3m Cover	136°	125.2	below standpt.				below standpt.

Prepared by: **D. FREDRIKSEN** 29/6/19 Checked: **Upele** Noted on U.T.M. Card

St 2733-2 D, West, Government Printer

LATITUDE 34.7245
 EAST LONGITUDE ZONE EASTING 517521.053
 NORTHING 6574590.720
 CONVERGENCE HEIGHT 310.4
 ADJ LENGTH 25309.415
 2450.868
 SERIAL 400 4214014
 WH 0 91 39 37 13 5.97
 WH 0 93 40 273 31 7.01



STATION NM/C/192	TS 3522	
Owner's Name:	Current Occupant:	Access Report of 29.6.1979 was found suitable/unsuitable. NM/C/192 is situated on the south side of the Walgett - Brewarrina road. 55km from Walgett and 40km from Brewarrina. See sketch
Address:	Address:	
Phone:	Phone:	
<u>ACCESS</u>		NM/C/192 was pinned on C.M.A photo NSW 2717/272 " " " " " RASC " NSW 2717/271
Date		
Record of Station		