

GEODETIC SURVEY OF N.S.W.

CENTRAL MAPPING AUTHORITY

GEODETIC STATION RECONNAISSANCE and MAINTENANCE REPORT

Particulars of station marking and beacon:

Access and Locality Sketch:

1. Station Mark. 1/2" diameter copper tube inserted in a 5' length of 2" diameter G.I. pipe which has been driven to G.L. and set in a concrete block marked with the station number.

2. Beacon. Nil.

REFERENCE MARKS. Three 1/2" diameter copper tubes set in lengths of G.I. water pipe driven to G.L. and set in concrete blocks. One with the Post on line to NM/C/77 and one roofing nail driven flush with B.M. cut in blazed tree.

ACCESS. NM/C/78 is sited on the north side of the Walgett-Brewarrina road, just east of the 9 mile post. It is close to the telephone line to see east along the clearing of the road and telephone line about 3 miles, and west about 1 1/2 miles to the next bend. Timber North and South of the road restricts views in all other directions. A 10' tower was used for all observations and measurements. A 12" diameter trench was dug around the station mark.

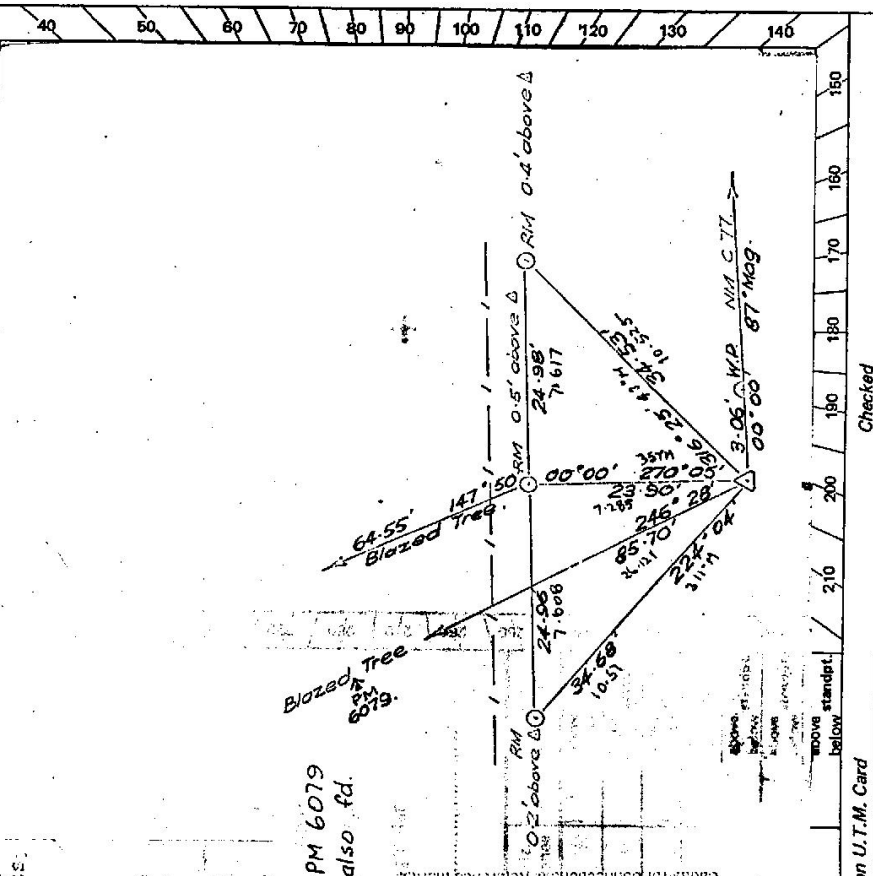
- 6. A.....set in conc/rock has been placed/found, bearing.....° M from Mast/P also fd.
- 7. A.....set in conc/rock has been placed/found, bearing.....° M from Mast/P
- 8. Action required:.....

Mark	Direction	Horiz. Distance	Height Difference	Mark	Direction
			above standpt		
			below		
			above standpt		
			below		
			above standpt		
			below		
			above standpt		
			below		
			above standpt		
			below		
			above standpt		
			below		

Prepared by: D. Fredriksen 15/10/79 Checked: Noted on U.T.M. Card

St 2735-1

STATION: NM/C/78 No.: 3512
 MAP SHEET SCALE 1:250 000 ANGELDOOL
 INSPECTED BY: D. Fredriksen DATE: 10/7/79
 AUTHORITY: C.M.A. FIELD BOOK:
 330 340 350 360 370 380 390



Checked

