

CENTRAL MAPPING AUTHORITY
 Department of Lands
 Trigonometrical Survey of N.S.W.
RECONNAISSANCE and MAINTENANCE REPORT

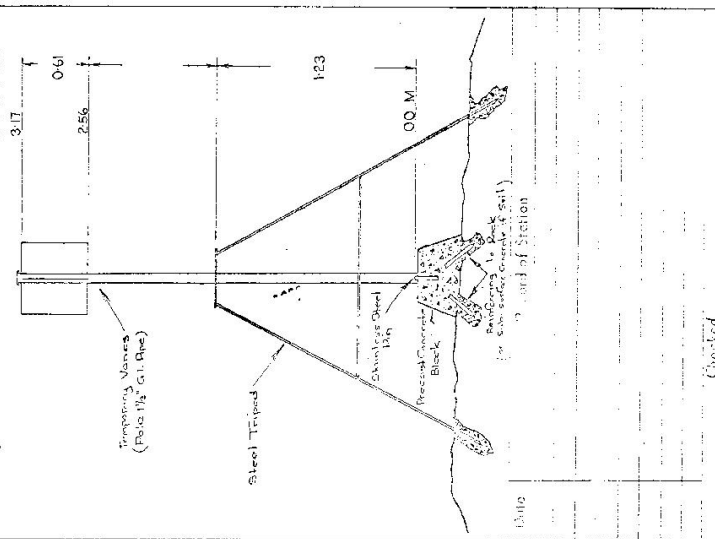
TS 2753 (K) 00A) IS 2753
 STATION KOKODA
 Co: CAMDEN Pn: YARRAWA
 Map Sheet: KANGAROO VALLEY CMA 1:25000 No: 9028-IV-S
 Inspected by: M. W. S. & D. B. Date: 1966
 Authority: Fish & Game Dept. Fish & Game Dept.
 Beacon Diagram: Not to Scale

This Trig. Station has been:

1. Completely cleared to ground level in an open bounding Trig.
 2. Cleared by line a bearing of ... from Trig. Mast
 3. Trig. Mast & Vanes have been painted white & black respectively.
 4. The Trig. was repaired/not unpiled, dimensions now being: Original Station Mark found first found
 Description of mark: **Stainless Steel Pin in Concrete Block**, should be explicit, e.g. **Steel plug, Bolt, G.I. Pipe**
 Height of mark: ... m above rock/concrete ... m above G.I.
 Height of Top Vanes to Top Mark: ... m. Diameter of Vanes (vertical) 0.61 m.
 Height of Cairn: ... m. Diameter of Cairn: ... m.
 Length of Mast: ... m. (approximate if not unpiled)

5. A. ... set in conc/rock has been placed. ... m, bearing ...°M from Trig. Mast
 6. A. ... set in conc/soil has been placed. ... m, bearing ...°M from Trig. Mast
 7. A. ... set in conc/soil has been placed. ... m, bearing ...°M from Trig. Mast
 8. A. ... set in conc/rock has been placed. ... m, bearing ...°M from Trig. Mast
 9. Connection: ... to ... m, bearing ...°M
 10. Connection: ... to ... m, bearing ...°M
 11. Connection: ... to ... m, bearing ...°M
 12. Connection: ... to ... m, bearing ...°M
 13. Diff. Ht. ... is ... m, above below
 14. Diff. Ht. ... is ... m, above below
 15. Diff. Ht. ... is ... m, above below
 16. Diff. Ht. ... is ... m, above below

Prepared by: ... Checked: ...
 Noted on U.T.M. Cord ... Checked

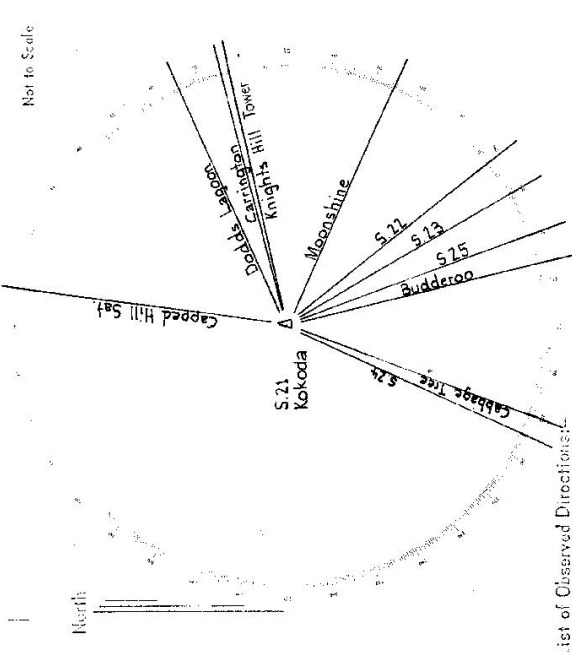
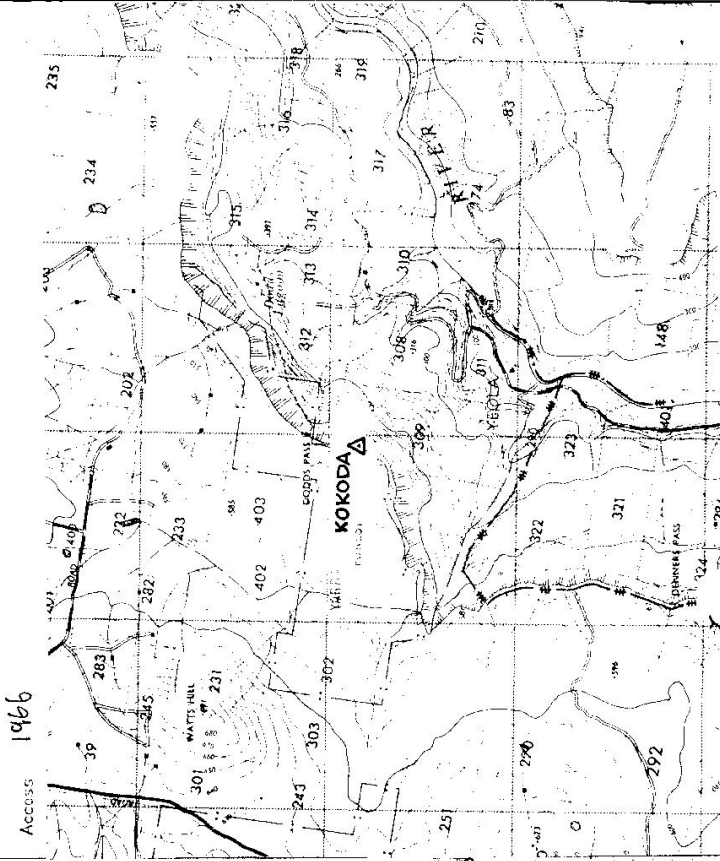


TS 2753

KOKODP

STATION

Owners Name:
Address:



List of Observed Directions:

Station	Direction	Station	Direction
CAPPED HILL SAT	S.15 0°00'00"	STATION	196°33'30.69"
DODDS LAGOON	S.19 58°13'17.19"		
CARRINGTON	S.18 67°26'16.53"		
KNIGHTS HILL TWR	S.11 167°31'49.55"		
MOONSHINE	S.20 105°37'33.37"		
S.21	133°33'46.46"		
S.23	141°21'37.05"		
S.25	151°11'09.64"		
BUDDEROO	S.13 158°06'05.15"		
CABBAGE TREE	S.16 151°25'32.71"		

Mean 10 Sets (1 Sat + 9 TR)