

CENTRAL MAPPING AUTHORITY  
Department of Lands

Trigonometrical Survey of N.S.W.

RECONNAISSANCE and MAINTENANCE REPORT

This Trig. Station has been:-

Note: Cross out word or words which do not apply

1. Completely cleared to permit 360° vision to surrounding Trigs.
2. ~~Cleared by felled-bearing.~~ ..... from Trig. Mast
3. Trig. Mast & Vanes ~~have been painted white & black respectively.~~ need painting
4. The Trig. was ~~erected~~/not upiled, dimensions now being:
  - Description of mark ~~Not upiled.~~ ..... should be explicit, e.g. Steel plug, Brass plug, Bolt, G.I. Pipe
  - Height of mark ..... m above rock/concrete ..... m below G.L.
  - Height of Top Vanes to Top Mark ..... m. Diameter of Vanes (vertical) 0.9 m.
  - Height of Cairn 1 m. Diameter of Cairn 2 m. m.

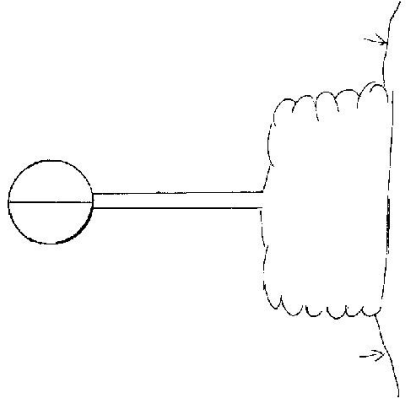
5. A ..... set in conc/rock has been placed ..... m. bearing ..... °M from Trig. Mast
6. A ..... set in conc/soil has been placed ..... m. bearing ..... °M from Trig. Mast
7. A ..... set in conc/soil has been placed ..... m. bearing ..... °M from Trig. Mast
8. A ..... set in conc/rock has been placed ..... m. bearing ..... °M from Trig. Mast

9. Connection ..... to ..... bearing ..... °M
10. Connection ..... to ..... bearing ..... °M
11. Connection ..... to ..... bearing ..... °M
12. Connection ..... to ..... bearing ..... °M

13. Diff. Ht. .... is ..... m. above below
14. Diff. Ht. .... is ..... m. above below
15. Diff. Ht. .... is ..... m. above below
16. Diff. Ht. .... is ..... m. above below

Prepared by: A. Patterson Checked: \_\_\_\_\_  
Noted on U.T.M. Card

STATION GRUBBEN TS 2340  
Co: Mitchell Ph: Grubben  
Map Sheet: Wagga Wagga No: 8327  
Inspected by: A. Patterson A.T.S. Date: Aug '76  
Authority Geodetic Survey CMA Field Book:  
Beacon Diagram Not to Scale



Date \_\_\_\_\_ Record of Station \_\_\_\_\_

Checked

