

CENTRAL MAPPING AUTHORITY

GEODETIC STATION RECONNAISSANCE and MAINTENANCE REPORT

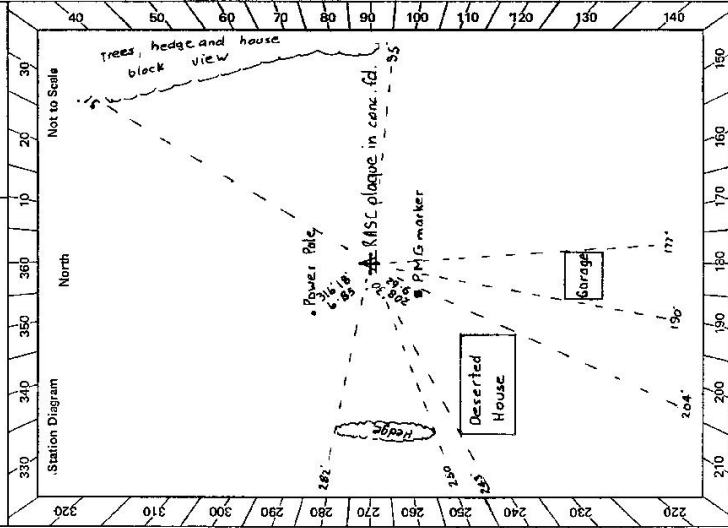
GEODETIC SURVEY OF N.S.W.

STATION: GRANVILLE No: 2296

MAP SHEET SCALE 1:250 000 TWEED HEADS

INSPECTED BY: D. FREDRIKSEN DATE: 14/3/80

AUTHORITY: C.M.A. FIELD BOOK: 1852



- Description: *Note: Cross out word or words which do not apply*
- Cleared by lanes bearing..... from Trig. Mast
  - Mast & Vanes have been painted white & black respectively.
  - The station/pillar was unpiled/not unpiled/constructed on..... 19....., dimensions now being:
    - Description of mark: *MASC*... *plaque* should be explicit, e.g., S/Steel Pillar Plate, Steel plug, Brass plug, Bolt, G.I. Pipe
    - Height of mark.....m, above below rock/concrete; Mark is.....m, above below G.L.
    - Height of Top Vanes to Top Mark/Pillar plate.....m. Diameter of Vanes (vertical).....m.
    - Height of Cairn.....m. Diameter of Cairn.....m. Name Plate found/not found/placed.
    - Length of Mast.....m. (approximate if not unpiled)
  - A..... set in conc/rock has been placed/found, bearing.....° M from Mast/Plug/Pillar
  - A..... set in conc/rock has been placed/found, bearing.....° M from Mast/Plug/Pillar
  - A..... set in conc/rock has been placed/found, bearing.....° M from Mast/Plug/Pillar
  - A..... set in conc/rock has been placed/found, bearing.....° M from Mast/Plug/Pillar
  - Action required: *to be replaced*

STATIONS LOOKED FOR				STANDPOINT:			
Mark	Direction	Horiz. Distance	Height-Difference	Mark	Direction	Horiz. Distance	Height Difference
CHINCOGAN	342° 45' R <sub>2</sub>	G.SOP	above standpt. below	PALMWOOD	319° 59'	hill	above standpt. below
BRUNSWICK	1° 12' "	G.SOP	above standpt. below	BROKEN HEAD	132° 40'	hill	above standpt. below
BYRON VIEW	101° 22' "	G.SOP	above standpt. below	NOMULGT	245° 05'	above hill	above standpt. below
BROOKLET	198° 37' "	G.SOP	above standpt. below	TERUBALEM	311° 48'	net on	above standpt. below
CAPE BYRON	79° 13' "	Not on (tree)	above standpt. below	CHOWAN	327° 07'	hill	above standpt. below
PEACH MTN	298° 03' "	hill	above standpt. below	BURRINGBAR	345° 41'	hill	above standpt. below
GOONENGERY	301° 14' "	pruned	above standpt. below				above standpt. below

Prepared by: D. Fredriksen 17/4/80 Checked: *[Signature]* Noted on U.T.M. Card

