

CENTRAL MAPPING AUTHORITY

GEODETIC SURVEY OF N.S.W.

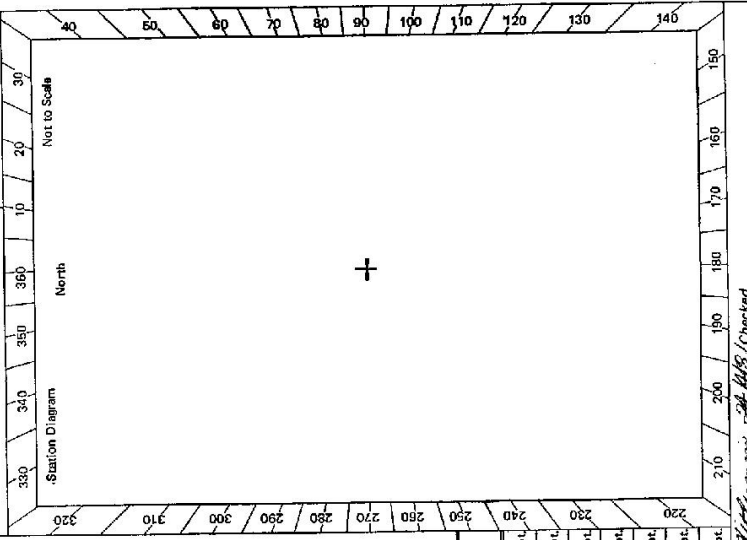
GEODETIC STATION RECONNAISSANCE and MAINTENANCE REPORT

STATION: **GOOD GOOD** No.: **2251**

MAP SHEET SCALE 1:250 000 **BEGA**

INSPECTED BY: **G. C. HANNA** DATE: **27-8-80**

AUTHORITY: **C.M.A.** FIELD BOOK:



- Description:
- Cleared by lanes bearing..... from Trig. Mast  
*Note: Cross out word or words which do not apply*
  - Mast & Vanes have been painted white & black respectively.
  - The station/pillar was unpiled/not unpiled/constructed on..... 19....., dimensions now being:  
Description of mark..... should be explicit, e.g., S/Steel Pillar Plate, Steel plug, Brass plug, Bolt, G.I. Pipe  
Height of mark..... m. <sup>above</sup> rock/concrete; Mark is..... m. <sup>above</sup> G.L.  
Height of Top Vanes to Top Mark/Pillar plate..... m. Diameter of Vanes (vertical)..... m.  
Height of Cairn..... m. Diameter of Cairn..... m. Name Plate found/not found/placed.  
Length of Mast..... m. (approximate if not unpiled)
  - A..... set in conc/rock has been placed/found, bearing.....° M from Mast/Plug/Pillar
  - A..... set in conc/rock has been placed/found, bearing.....° M from Mast/Plug/Pillar
  - A..... set in conc/rock has been placed/found, bearing.....° M from Mast/Plug/Pillar
  - A..... set in conc/rock has been placed/found, bearing.....° M from Mast/Plug/Pillar
  - Action required:.....

STANDPOINT:

Mark	Direction	Horiz. Distance	Height Difference	Mark	Direction	Horiz. Distance	Height Difference
			above standpt				above standpt
			below				below
			above standpt				above standpt
			below				below
			above standpt				above standpt
			below				below
			above standpt				above standpt
			below				below
			above standpt				above standpt
			below				below
			above standpt				above standpt
			below				below

Prepared by: *G. Hanna* 2/9/80  
 Checked: *G. Hanna* 2/9/80  
 Noted on U.T.M. Card *15/1/80*  
 Checked: *24/1/80*

