

STATION FULTON GS (Pillar) IS 2117

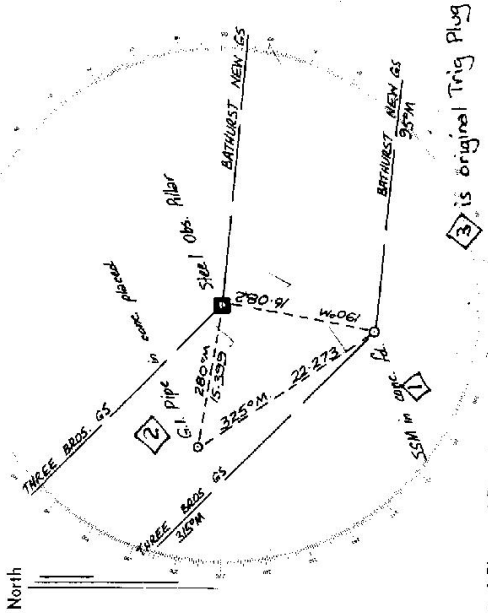
Owners Name.....
 Current Occupant.....

Address.....
 Address.....

Access.....

Not to Scale

Station Diagram



List of Observed Directions:-

Station	Direction	Station	Direction
THREE BRGS GS	359 59 60	THREE BRGS GS	359 59 60
BATHURST NEW GS	140 23 35	G.I. Pipe in conc.	10 53 05
SSM in conc.	234 40 25	Steel Pillar	54 36 55
G.I. Pipe in conc.	324 42 15	BATHURST NEW GS	140 17 05

Standpoint: Steel Pillar / Standpoint: SSM in conc. ✓

Station	Direction

CENTRAL MAPPING AUTHORITY
Department of Lands

Topographical Survey of N.S.W.

RECONNAISSANCE and MAINTENANCE REPORT

This Trig. Station has been:-

Note: Cross out word or words which do not apply

1. Completely cleared to permit 360° vision to surrounding Trigs.
2. Cleared by lanes bearing..... from Trig. Mast
3. Trig. Mast & Vanes have been painted white & black respectively.
4. The Trig. was unpiled/~~not-unpiled~~, dimensions now being:

Trig Plug in cone

SSM conc found 16.081 190 Plus
G.I. Pipe 15.400 280

SSM G.I. Pipe 22.268 325

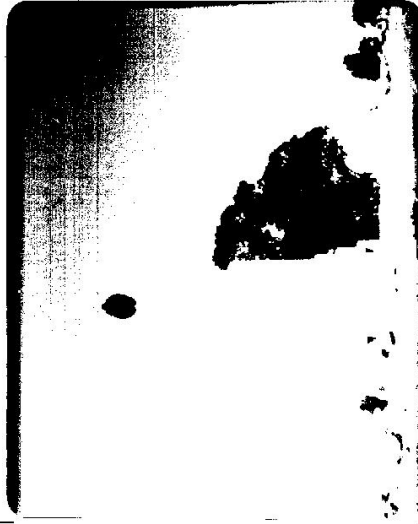
10. Connection..... to..... m. bearing.....°M
11. Connection..... to..... m. bearing.....°M
12. Connection..... to..... m. bearing.....°M
13. Diff. Ht. Trig Plug is 0.598 m. above SSM
14. Diff. Ht. Trig Plug is 0.615 m. above G.I. Pipe
15. Diff. Ht. is..... m. above
16. Diff. Ht. is..... m. above

Prepared by: *[Signature]*

Checked: *[Signature]*

Noted on U.T.M. Card

STATION FULTON GS TS 2117
Co: GEORGIANA Ph: GILMUNDYKE
Map Sheet: BLANEY No: 8730
Inspected by: P. Naylor Date: 2 Aug 1977
Authority: CMA Field Book: ISSS
Beacon Diagram Not to Scale



Date

Record of Station

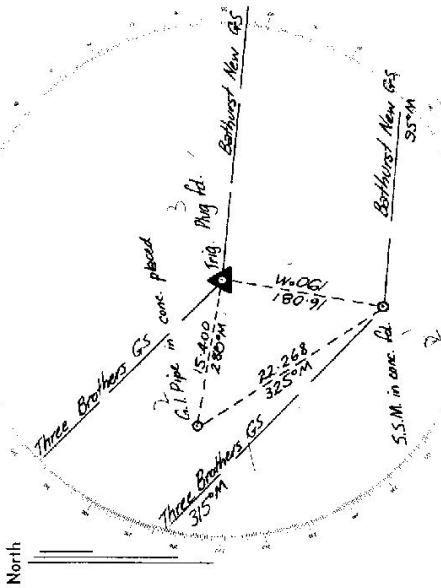
Checked

STATION FULTON GS TS 2117

Owners Name.....
 Current Occupant.....
 Address.....
 Address.....
 Access.....

Not to Scale

Station Diagram



List of Observed Directions:-

Standpoint: Trig Plug in conc. v		Standpoint: SSM in conc. v	
Station	Direction	Station	Direction
Three Bros GS	359 59 60	Three Bros GS	359 59 60
Bothurst New GS	40 22 10	G.I. Pipe in conc.	10 53 00
SSM in conc.	214 39 20	Trig Plug	54 37 35
G.I. Pipe in conc.	324 41 50	Bothurst New GS	140 17 10

Standpoint: G.I. Pipe in conc. v	
Station	Direction
Three Bros GS	359 59 60
Bothurst New GS	40 20 30
Trig Plug in conc.	44 38 55
SSM in conc.	190 53 10

CENTRAL MAPPING AUTHORITY

GEODETIC SURVEY OF M.S.W.

GEODETIC STATION RECONNAISSANCE and MAINTENANCE REPORT

Description:

Note: Cross out word or words which do not apply

1. Cleared by lances bearing..... from Trig. Mast
2. Mast & Vanes have been painted white & black respectively.
3. The station/pillar was unpiled/not unpiled/constructed on..... dimensions now being:
- Description of mark..... should be explicit, e.g., S/Steel Pillar Plate, Steel plug, Brass plug, Bolt, G.I. Pipe
- Height of mark..... m. above rock/concrete; Mark is..... m. above G.L.
- Height of Top Vanes to Top Mark/Pillar plate..... m. Diameter of Vanes (vertical)..... m.
- Height of Cairn..... m. Diameter of Cairn..... m. Name Plate found/not found/placed.
- Length of Mast..... m. (approximate if not unpiled)
4. A..... set in conc/..... has been..... found, bearing.....° M from...../Pillar
5. A..... set in conc/..... has been..... found, bearing.....° M from...../Pillar
6. A..... set in conc/rock has been placed/..... bearing.....° M from Mast/Plug/Pillar
7. A..... set in conc/rock has been placed/..... bearing.....° M from Mast/Plug/Pillar
8. Action required:..... is orig. Trig. Plug

STANDPOINT: Reef Top Pillar

STANDPOINT: S.S.W. in Cairn (L)

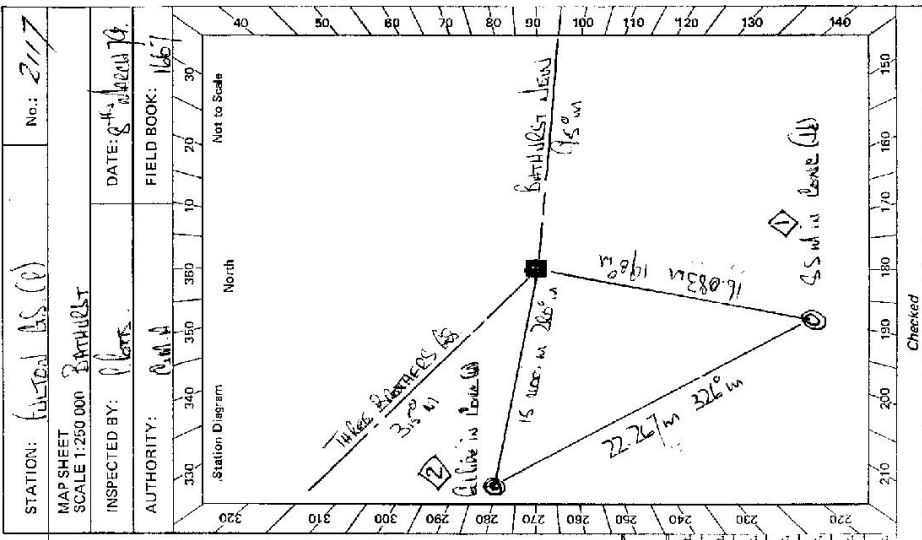
Mark	Direction	Horiz. Distance	Height Difference	Mark	Direction	Horiz. Distance	Height Difference
THREE BATTERIES	0 00 00	00	above standpt.	THREE BATTERIES	0 00 00	00	above standpt.
REEF TOP PILLAR	110 27 50	110.275	above standpt.	A. PIPE IN CAIRN (L)	52 40 22.266	22.266	above standpt.
S.S.W. IN CAIRN (L)	324 14 30	324.143	above standpt.	A.P. TRIG. PLUG	54 37 40	54.374	above standpt.
A. PIPE IN CAIRN (L)	324 14 30	324.143	above standpt.	REEF TOP PILLAR	54 37 40	54.374	above standpt.
			below standpt.	BATHURST ALONG BS	110 17 20	110.172	below standpt.
			below standpt.				below standpt.

Prepared by: KERTS. JON NORTON 1979

Noted on U.T.M. Card

8: 2733-1

Checked



STATION: FULTON BS (P) No.: 2117

MAP SHEET SCALE 1:250 000 BATHURST

INSPECTED BY: KERTS. DATE: 8/12/19

AUTHORITY: G.M.A. FIELD BOOK: 1667

CENTRAL MAPPING AUTHORITY

GEODETIC SURVEY OF W.S.W.

GEODETIC STATION RECONNAISSANCE and MAINTENANCE REPORT

- Description: *Note: Cross out word or words which do not apply*
- Cleared by lanes bearing..... from Trig. Mast
 - Mast & Vanes have been painted white & black respectively.
 - The station/pillar was unpiled/not unpiled/constructed on..... 19....., dimensions now being: Description of mark..... should be explicit, eg, S/Steel Pillar Plate, Steel plug, Brass plug, Bolt, G.I. Pipe
Height of mark..... m. above rock/concrete; Mark is..... m. above G.L.
 - Height of Top Vanes to Top Mark/Pillar plate m. Diameter of Vanes (vertical)..... m.
 - Height of Cairn..... m. Diameter of Cairn..... m. Name Plate found/not found/placed.
 - Length of Mast..... m. (approximate if not unpiled)
 - A. S.S.W. set in conc/ has been placed/found, bearing..... M from Mast/Plug/Pillar
 - A. S.S.W. set in conc/ has been placed/found, bearing..... M from Mast/Plug/Pillar
 - A. set in conc/rock has been placed/found, bearing..... M from Mast/Plug/Pillar
 - A. set in conc/rock has been placed/found, bearing..... M from Mast/Plug/Pillar

8. Action required: *See note in 1.*

STANDPOINT: *See note in 1.*

Mark	Direction	Horiz. Distance	Height Difference	Mark	Direction	Horiz. Distance	Height Difference
<i>THREE BEARINGS</i>	<i>to</i>	<i>00</i>	<i>above</i>				<i>standpt</i>
<i>BEARINGS</i>	<i>to</i>	<i>76</i>	<i>above</i>				<i>standpt</i>
<i>Rock Top</i>	<i>to</i>	<i>15</i>	<i>above</i>				<i>standpt</i>
<i>Large rock</i>	<i>to</i>	<i>16</i>	<i>below</i>				<i>standpt</i>
<i>S.S.W.</i>	<i>to</i>	<i>27</i>	<i>above</i>				<i>standpt</i>

Prepared by: *P. Potts* Checked: *P. Potts*
 Notes on U.T.M. Card

STATION: *W.S.W. (S.S.P)* No.: *2117*
 MAP SHEET SCALE 1:250 000
 INSPECTED BY: *P. Potts* DATE: *9th March 19*
 AUTHORITY: *W.S.W.* FIELD BOOK: *167*

Station Diagram

North

Not to Scale

Checked

CENTRAL MAPPING AUTHORITY

GEODETIC SURVEY OF A.S.W.
 GEODETIC STATION RECONNAISSANCE and MAINTENANCE REPORT

STATION: FULFORD (P) No.: 2117

MAP SHEET SCALE 1:250 000 EASTING

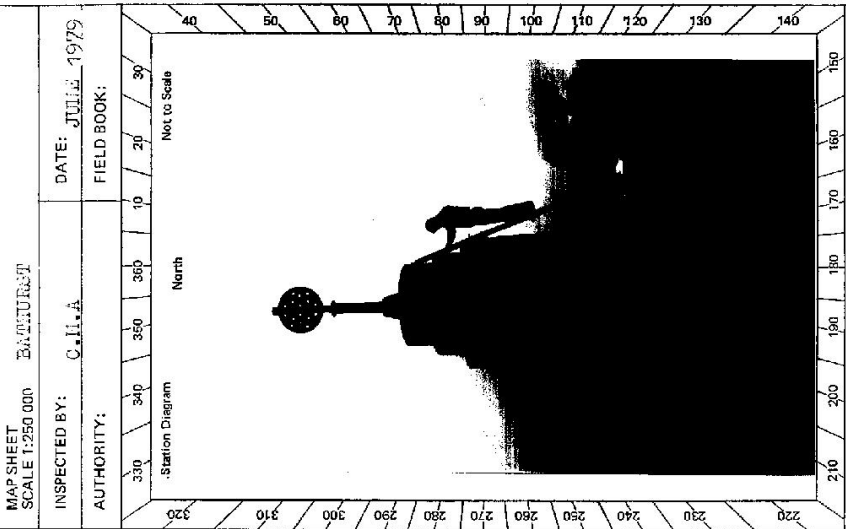
INSPECTED BY: C.H.A. DATE: JULY 1979
 AUTHORITY: FIELD BOOK:

Note: Cross of

Description:

- Cleared by lanes bearing.....
- Mast & Vanes have been painted white & black respectively.
- The station/pillar was unpiled/not unpiled/constructed on.....
 Description of mark..... should be explicit, e.g., S/Steel Pill
 Height of mark.....m. ^{above} rock/concrete; Mark is.....
 Height of Top Vanes to Top Mark/Pillar platem.
 Height of Cairn.....m. Diameter of Cairn.....
 Length of Mast.....m. (approximate if not unpiled)
- A.....set in conc/rock has been placed/found, bea
- A.....set in conc/rock has been placed/found, bea
- A.....set in conc/rock has been placed/found, bea
- A.....set in conc/rock has been placed/found, bea
- Action required:.....

STATION	Mark	Direction	Horiz. Distance	Height Difference	Mark	Direction	Distance	Height Difference
				above standpt				above standpt
				below				below
				above standpt				above standpt
				below				below
				above standpt				above standpt
				below				below
				above standpt				above standpt
				below				below
				above standpt				above standpt
				below				below
				above standpt				above standpt
				below				below



Prepared by: Noted on U.T.M. Card

Checked:

Checked:

CENTRAL MAPPING AUTHORITY

GEODETIC SURVEY OF NSW

GEODETIC STATION RECONNAISSANCE and MAINTENANCE REPORT

Description: *Note: Cross out word or words which do not apply*

1. Cleared by lanes bearing..... *Note: Cross out word or words which do not apply* from Trig. Mast
2. Mast & Vanes have been painted white & black respectively.
3. The station/pillar was unpiled/not unpiled/constructed on..... 19....., dimensions now being: Description of mark..... should be explicit, e.g., S/Steel Pillar Plate, Steel plug, Brass plug, Bolt, G.I. Pipe
Height of mark..... m. above rock/concrete; Mark is..... m. above G.L.
- Height of Top Vanes to Top Mark/Pillar plate m. Diameter of Vanes (vertical)..... m.
- Height of Cairn..... m. Diameter of Cairn..... m. Name Plate found/not found/placed.
- Length of Mast..... m. (approximate if not unpiled)
4. A *SS.M.*..... set in conc./rock has been placed/found, bearing..... 198° M from ~~SS.M.~~ *Brass/Pillar*
5. A *G.I. Pipe*..... set in conc./rock has been placed/found, bearing..... 281° M from ~~Mast/Plug/Pillar~~
6. A..... set in conc./rock has been placed/found, bearing..... ° M from Mast/Plug/Pillar
7. A..... set in conc./rock has been placed/found, bearing..... ° M from Mast/Plug/Pillar
8. Action required: *② is original Trig. Plug*..... STANDPOINT: *SS.M. in Conc.*

Mark	Direction	Horiz. Distance	Height Difference	Mark	Direction	Horiz. Distance	Height Difference
<i>CP 8750001</i>				<i>CP 8750001</i>			
<i>THREE BROTHERS CS</i>	0 00 00		above standpt.	<i>THREE BROTHERS CS</i>	0 00 00		above standpt.
<i>BURNUSST NEW CS</i>	40 22 40		below standpt.	<i>G.I. Pipe</i>	6 52 30	22.27	0.05
<i>SS.M. in Conc.</i>	230 40 20	16.02	above standpt.	<i>Brass Pillar</i>	54 37 30	6.06	6.85
<i>G.I. PIPE</i>	320 41 20	15.38	below standpt.	<i>ARMURIST NEW CS</i>	40 17 10		
			below standpt.				
			above standpt.				
			below standpt.				
			above standpt.				
			below standpt.				

Prepared by: *PLONS 23rd MAY 1981* Checked: *Noted on U.T.M. Card*

SA 2738-1

STATION: *FULTON CS (P)* No.: *2117*
 MAP SHEET SCALE 1:250 000 *BATHURST*
 INSPECTED BY: *P. HORS* DATE: *29th May 1981*
 AUTHORITY: *C.M.A.* FIELD BOOK: *1825*

Station Diagram

North

Not to Scale

Checked

CENTRAL MAPPING AUTHORITY

GEODETIC SURVEY OF NSW

GEODETIC STATION RECONNAISSANCE and MAINTENANCE REPORT

Description:

1. Cleared by lanes bearing.....
 Note: Cross out word or words which do not apply
 from Trig. Mast

2. Mast & Vanes have been painted white & black respectively.

3. The station/pillar was unpiled/not unpiled/constructed on.....19....., dimensions now being:

Description of mark.....should be explicit, e.g., S/Steel Pillar Plate, Steel plug, Brass plug, Bolt, G.I. Pipe

Height of mark.....m. above below Mark is.....m. above below G.L.

Height of Top Vanes to Top Mark/Pillar plate.....m. Diameter of Vanes (vertical).....m.

Height of Cairn.....m. Diameter of Cairn.....m. Name Plate found/not found/placed.

Length of Mast.....m. (approximate if not unpiled)

4. A.....set in conc./rock has been placed/found, bearing.....° M from Mast/Plug/Pillar

5. A.....set in conc./rock has been placed/found, bearing.....° M from Mast/Plug/Pillar

6. A.....set in conc./rock has been placed/found, bearing.....° M from Mast/Plug/Pillar

7. A.....set in conc./rock has been placed/found, bearing.....° M from Mast/Plug/Pillar

8. Action required:.....

STANDPOINT: *CR. PIPE*

STANDPOINT:

Mark	Direction	Horiz. Distance	Height Difference	Mark	Direction	Horiz. Distance	Height Difference
<i>TRIG. MAST</i>	<i>0 00 00</i>		above standpt. below				above standpt. below
<i>BRASS PLUG</i>	<i>140 21 00</i>		above standpt. below				above standpt. below
<i>STEEL PILLAR</i>	<i>140 40 00</i>	<i>1.406</i>	above standpt. below				above standpt. below
<i>S.S. PLATE</i>	<i>140 50 00</i>	<i>2.272</i>	above standpt. below				above standpt. below
			above standpt. below				above standpt. below
			above standpt. below				above standpt. below
			above standpt. below				above standpt. below

Prepared by: *Plotts*

Checked: *28 May 1981*

Noted on U.T.M. Card

Sr 2738-1

STATION: *FURON GARD* TS No.: *2117*

MAP SHEET SCALE 1:250 000 *BATHURST*

INSPECTED BY: *P. Plotts* DATE: *28-5-81*

AUTHORITY: *C.M.A.* FIELD BOOK: *1125*

Station Diagram

Not to Scale

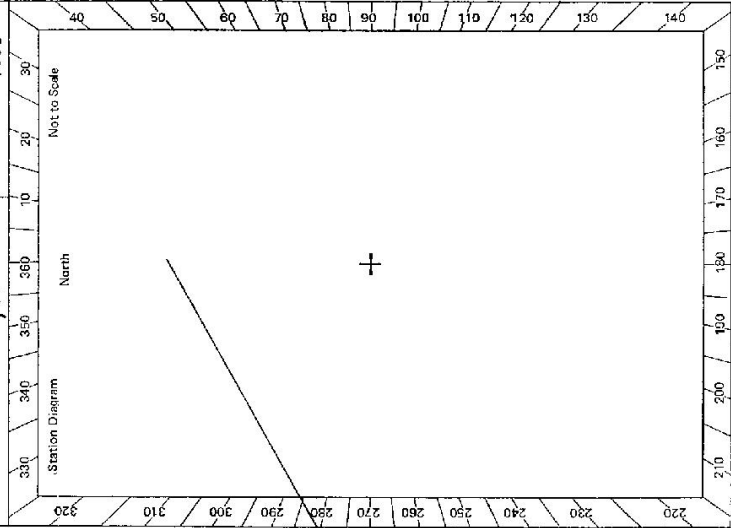
Checked

CENTRAL MAPPING AUTHORITY

GEODETIC STATION RECONNAISSANCE and MAINTENANCE REPORT

Description:
 1. Cleared by lanes bearing.....
 2. Mast & Vanes have been painted white & black respectively.
 3. The station/pillar was unpiled/hot unpiled/constructed on.....19....., dimensions now being:
 Description of mark.....should be explicit, e.g., S/Steel Pillar Plate, Steel plug, Brass plug, Bolt, G.I. Pipe
 Height of mark.....m. ^{above} _{below} rock/concrete: Mark is.....m. ^{above} _{below} G.L.
 Height of Top Vanes to Top Mark/Pillar plate.....m. Diameter of Vanes (vertical).....m.
 Height of Cairn.....m. Diameter of Cairn.....m. Name Plate found/hot found/placed.
 Length of Mast.....m. (approximate if not unpiled)

STATION: *FULTON GS(2)* No.: *2117*
 MAP SHEET SCALE *1:250 000*
 INSPECTED BY: *P. BATHURST*
 DATE: *28.4.82*
 AUTHORITY: *C.M.A.* FIELD BOOK: *1663*



4. A.....set in conc/rock has been placed/found, bearing.....° M from Mast/Plug/Pillar
 5. A.....set in conc/rock has been placed/found, bearing.....° M from Mast/Plug/Pillar
 6. A.....set in conc/rock has been placed/found, bearing.....° M from Mast/Plug/Pillar
 7. A.....set in conc/rock has been placed/found, bearing.....° M from Mast/Plug/Pillar
 8. Action required:.....

STANDPOINT: *NEW*

Mark	Direction	Horiz. Distance	Height Difference	Mark	Direction	Horiz. Distance	Height Difference
			above standpt				above standpt
			below				below
			above standpt				above standpt
			below				below
			above standpt				above standpt
			below				below
			above standpt				above standpt
			below				below
			above standpt				above standpt
			below				below

Prepared by:.....
 Checked: *g...*
 Noted on U.T.M. Card

