

CENTRAL MAPPING AUTHORITY

GEODETIC SURVEY OF M.S.W

GEODETIC STATION RECONNAISSANCE and MAINTENANCE REPORT

STATION: DRINA No: 1875

MAP SHEET SCALE 1:250 000 CAN/BE RRA

INSPECTED BY: K HADJOU DATE: 17 Oct. 1979

AUTHORITY: CAN A FIELD BOOK:

Description: *Note: Cross out word or words which do not apply*

- 1. Cleared by lanes bearing..... from Trig. Mast
- 2. Mast & Vanes have been painted white & black respectively.
- 3. The station/pillar was unpiled/not unpiled/constructed on..... 19....., dimensions now being: Description of mark..... should be explicit, e.g., S/Steel Pillar Plate, Steel plug, Brass plug, Bolt, G.I. Pipe
 Height of mark.....m. ^{above} _{below} rock/concrete; Mark is.....m. ^{above} _{below} G.L.
 Height of Top Vanes to Top Mark/Pillar platem. Diameter of Vanes (vertical).....m.
 Height of Cairn.....m. Diameter of Cairn.....m. Name Plate found/not found/placed.
 Length of Mastm. (approximate if not unpiled)
- 4. A.....set in conc/rock has been placed/found, bearing.....° M from Mast/Plug/Pillar
- 5. A.....set in conc/rock has been placed/found, bearing.....° M from Mast/Plug/Pillar
- 6. A.....set in conc/rock has been placed/found, bearing.....° M from Mast/Plug/Pillar
- 7. A.....set in conc/rock has been placed/found, bearing.....° M from Mast/Plug/Pillar
- 8. Action required:.....

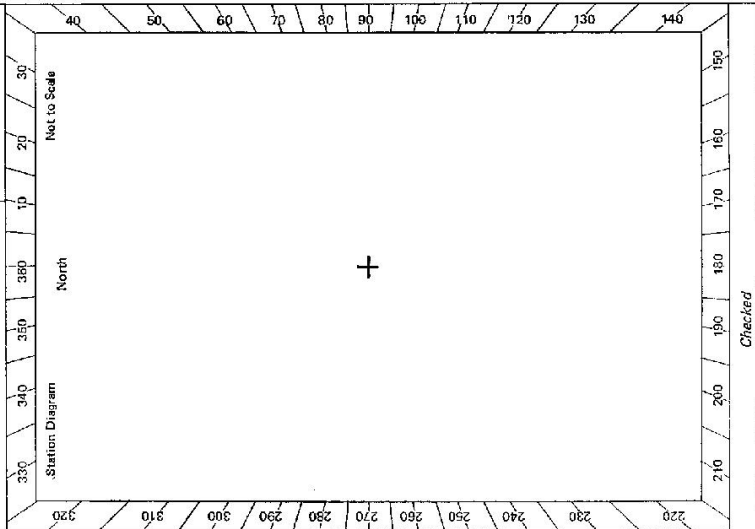
STANDPOINT:

Mark	Direction	Horiz. Distance	Height Difference	Mark	Direction	Horiz. Distance	Height Difference
			above standpt.				above standpt.
			below standpt.				below standpt.
			above standpt.				above standpt.
			below standpt.				below standpt.
			above standpt.				above standpt.
			below standpt.				below standpt.
			above standpt.				above standpt.
			below standpt.				below standpt.
			above standpt.				above standpt.
			below standpt.				below standpt.

Prepared by: K. Hadjou

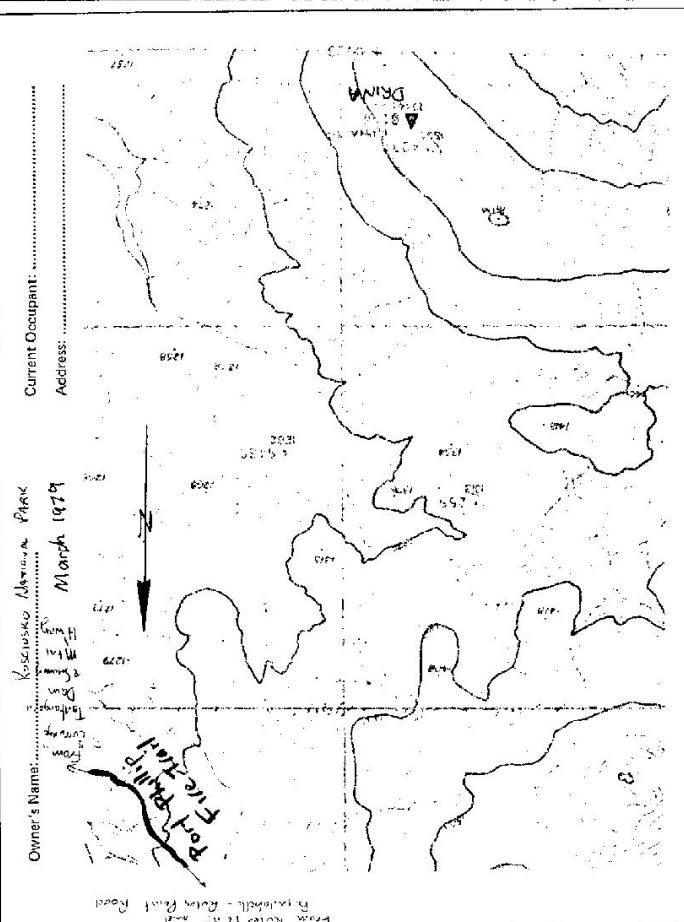
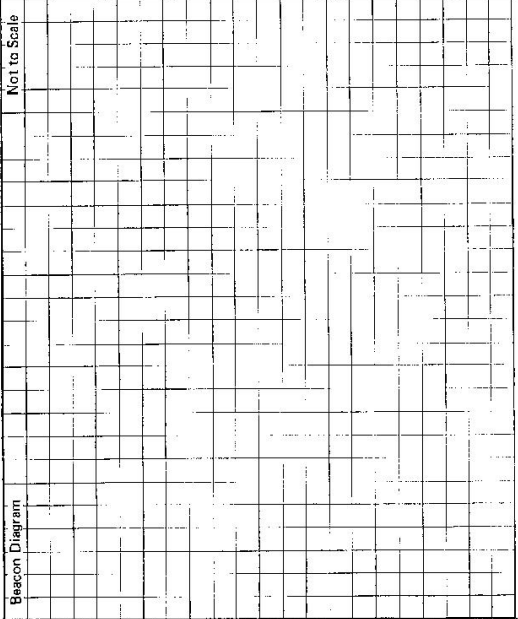
Checked: _____

SI 2733-1



STATION DRINA TS 1875

SR 2733-2 D. West. Government Printer



This section to be completed by officer constructing pillar.

Original station mark found/not found.

Description of mark:

Original beacon found/not found.

Description of beacon:

Height Top of Varies to Top Mark.....m.
 Height of mark.....m. above G.L. below
 rock/conc.....m. below

Diameter of Variesm. Height of Cairnm.

Original Beacon has/has not been destroyed by ma.

Date	Record of Station
March 1979	Beacon sighted from road approx 3km North of station.