

TRIGONOMETRIC RECONNAISSANCE and MAINTENANCE REPORT

CENTRAL MAPPI NG AUTHORITY
Department of Lands

Trigonometric Survey of N.S.W.

TS 1337 (CABBAGE TREE)
STATION CABBAGE TREE (S26)

This Trig. Station has been:

Noted on U.T.M. Card

Co: CAMDEN Ph: YARRAWA

Map Sheet: KANGAROO VALLEY C.M.A. 1:25000 No: 9028-IV-S

Inspected by: Authority M.W.S. & D.B. Date: 1966 Field Book:

1. Trig. Station is on a concrete block.
2. Classed by means bearing See Over
3. Trig. Mast & Vanes have been painted white & black respectively.
4. The Trig. was uniplaced/not uniplaced, dimensions now being: Original Station Mark found in not found

Description of mark: Stainless Steel Pin in Concrete Block, should be explicitly, esp. Steel plug, Brass plug, Bell, G.I. Pipe
Height of mark: m above mark/concrete m above below G.L.
Height of Top Vanes in Top Block: m Diameter of Vanes (vertical): 0.61 m.

Height of Cairn: m Diameter of Cairn: m.

Length of Mast: m (if not uniplaced)

5. A in concrete has been placed m bearing m from Trig. Mast
6. A in concrete/soil has been placed m bearing m from Trig. Mast
7. A in concrete/soil has been placed m bearing m from Trig. Mast
8. A in concrete has been placed m bearing m from Trig. Mast

9. Connection: to m bearing m

10. Connection: to m bearing m

11. Connection: to m bearing m

12. Connection: to m bearing m

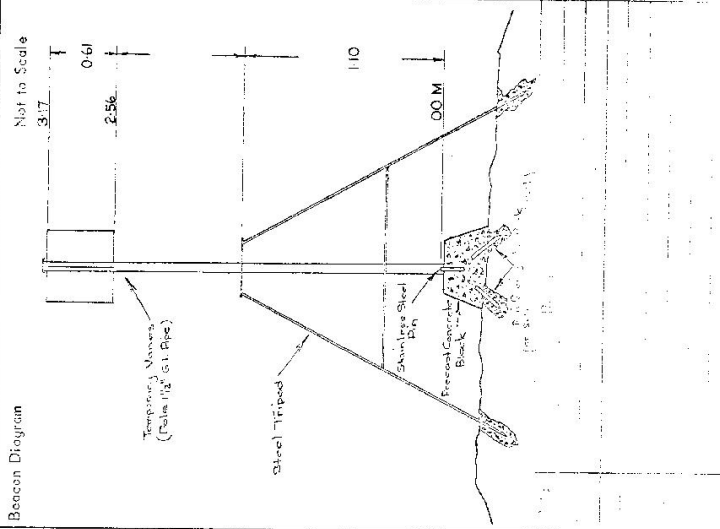
13. Diff. Ht. is m above below

14. Diff. Ht. is m above below

15. Diff. Ht. is m above below

16. Diff. Ht. is m above below

Drawn by: Checked:
Noted on U.T.M. Card



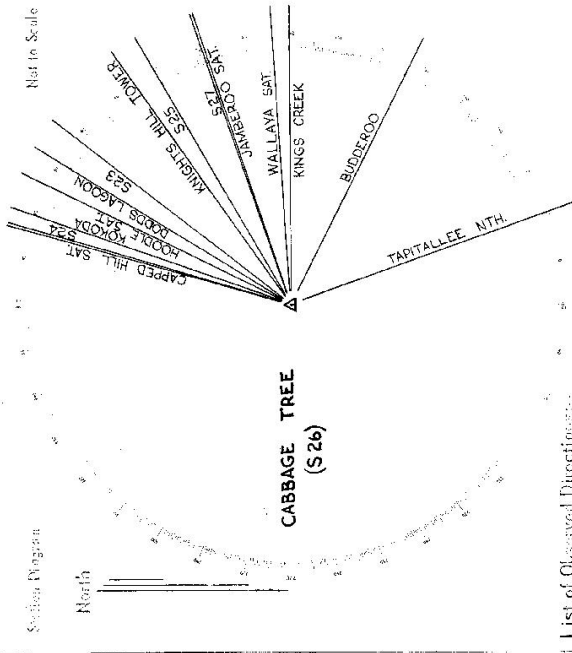
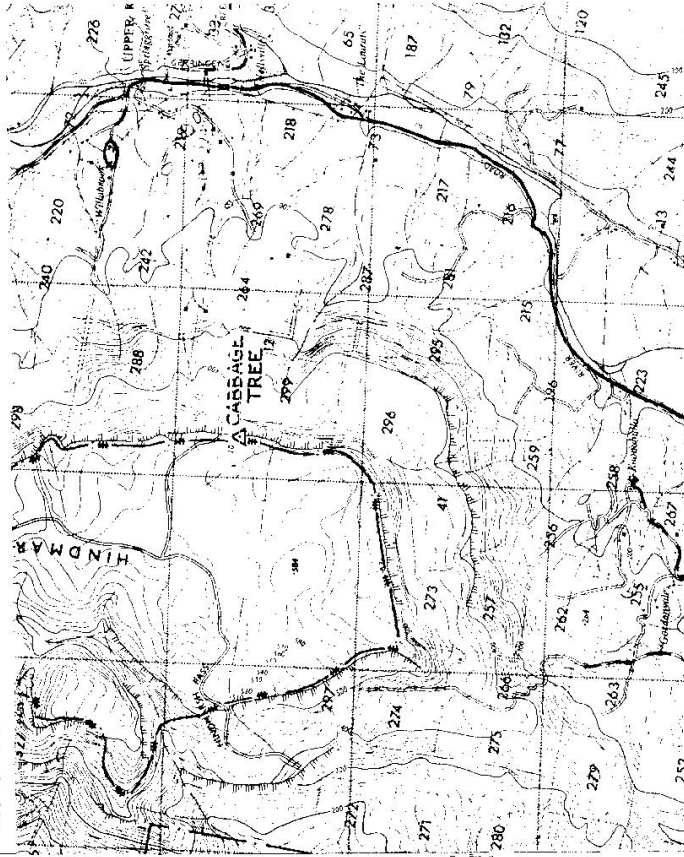
STATION CABBAGE TREE (S26)

TS 1327

Owners Name:

Address:

Access:



List of Observed Directions:

Station	Direction	Dist. (ft)
CAPPED HILL SAT	S15 10' 00" 00' 00"	S12 70' 22' 14.23'
S24	07 31' 03' 67"	S28 74' 01' 10.90'
KOKODA	S21 3' 33' 03' 32"	S13 100' 52' 20.33'
HOODLE SAT	S19 10' 22' 36' 13"	S5 144' 36' 11.24' 280'
DODDS LAGOON	S19 15' 43' 01' 71"	
WALLAYA SAT		
KINGS CREEK		
BUDDEROO		
TAPITALLEE NTH		
KINGS HILL TOWER		
KINGS SAT		
COOPER SAT		
WALLAYA SAT		
KINGS CREEK		
BUDDEROO		
TAPITALLEE NTH		

MEAN TO SETS (1 SET = 1 FLTR)

Station	Direction	Dist. (ft)
S23	22' 06' 35' 02"	
KNIGHTS HILL TWR	S11 39' 04' 32' 83"	
S25	43' 38' 56' 60"	
S27	55' 02' 58' 37"	
JAMBEROO SAT	S3 55' 22' 33' 19"	