

# LOCALITY SKETCH PLAN



Local Government Area CLARENCE VALLEY

Town/Suburb/Locality HERNANI CORS

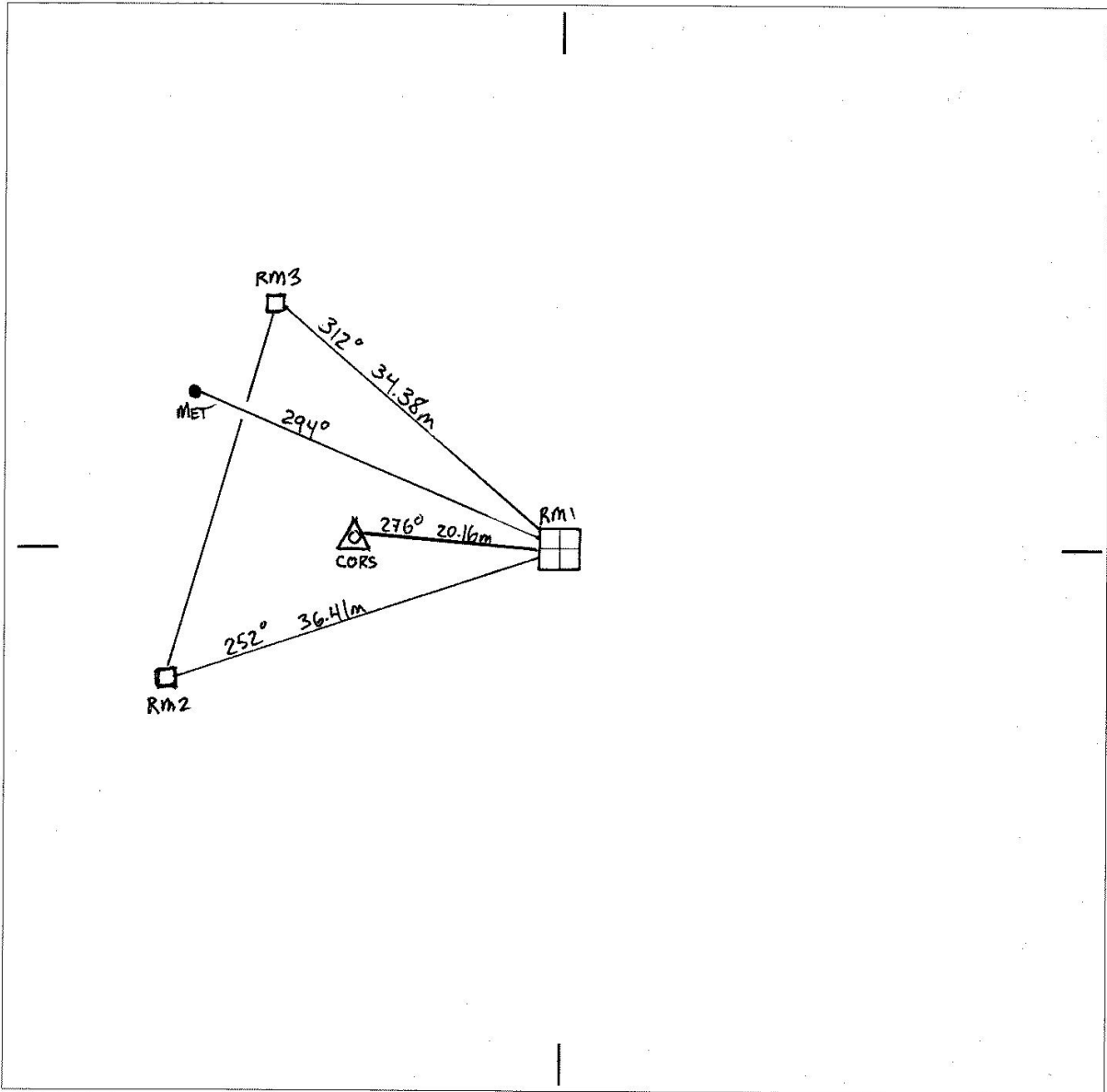
Approx MGA Coordinate: Zone 56

E: 450690.232 by RM Survey

N: 6644902.653

Office Use - Barcode Including Number Inserted Here

Description of Mark Reference Mark #1



Please use black ink only

SURVEYING REGULATION			
MARK	AHD	SOURCE	DATE
HEIGHT DETERMINED BY (Specify)		- DIFF. LEVELLING	
		- TRIG HEIGHTING	
ADOPTED MARKS		- GPS	

Measurements are in metres

~~PM~~ TS 12222-1

~~SS~~ \_\_\_\_\_

PM \_\_\_\_\_

Replaces \_\_\_\_\_

SS \_\_\_\_\_

I certify that the mark has been placed/found and numbered as detailed hereon.

Signed: Tom Grinter +

Name: Joel Haasduk

Organisation placing mark: LPMA/LP1

Date mark placed/found: 17/10/2013

Ref: \_\_\_\_\_

# LOCALITY SKETCH PLAN



Local Government Area CLARENCE VALLEY

Town/Suburb/Locality HERNANI CORS

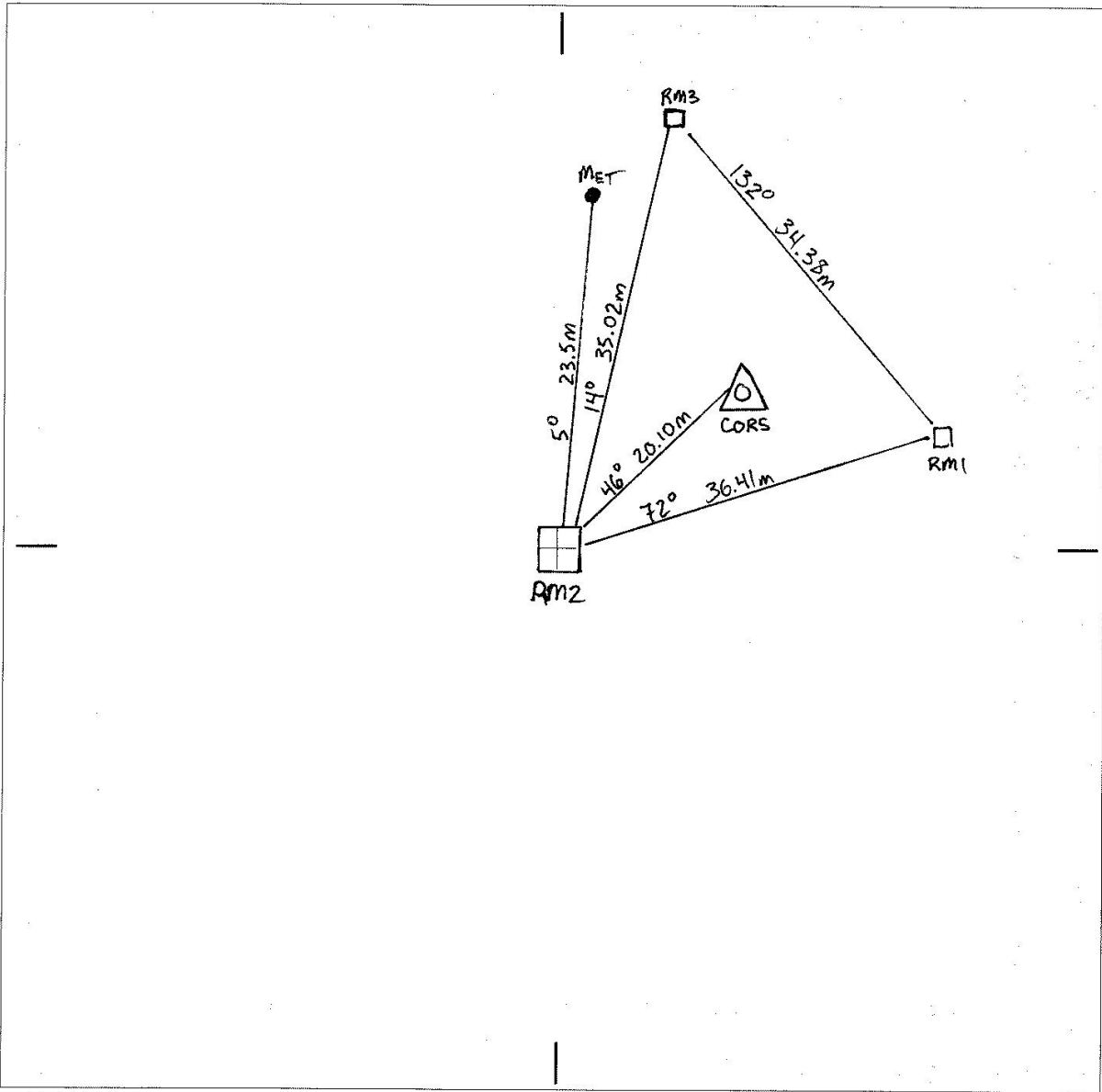
Approx MGA Coordinate: Zone 56

E: 450654.065 by RM Survey

N: 6644898.609

Description of Mark Reference Mark #2

Office Use - Barcode Including Number Inserted Here



Please use black ink only

SURVEYING REGULATION			
MARK	AHD	SOURCE	DATE
HEIGHT DETERMINED BY (Specify)		- DIFF. LEVELLING	- TRIG HEIGHTING
ADOPTED MARKS		- GPS	

Measurements are in metres

~~PM~~ TS 12222-2

~~SS~~

PM \_\_\_\_\_  
Replaces \_\_\_\_\_  
SS \_\_\_\_\_

I certify that the mark has been placed/found and numbered as detailed hereon.

Signed: Tom Crinter

Name: Joel Haasdyk

Organisation placing mark: LPMA / LPI

Date mark placed/found: 17/10/2013

Ref: \_\_\_\_\_

# LOCALITY SKETCH PLAN



Local Government Area CLARENCE VALLEY

Town/Suburb/Locality HERNANI CORS

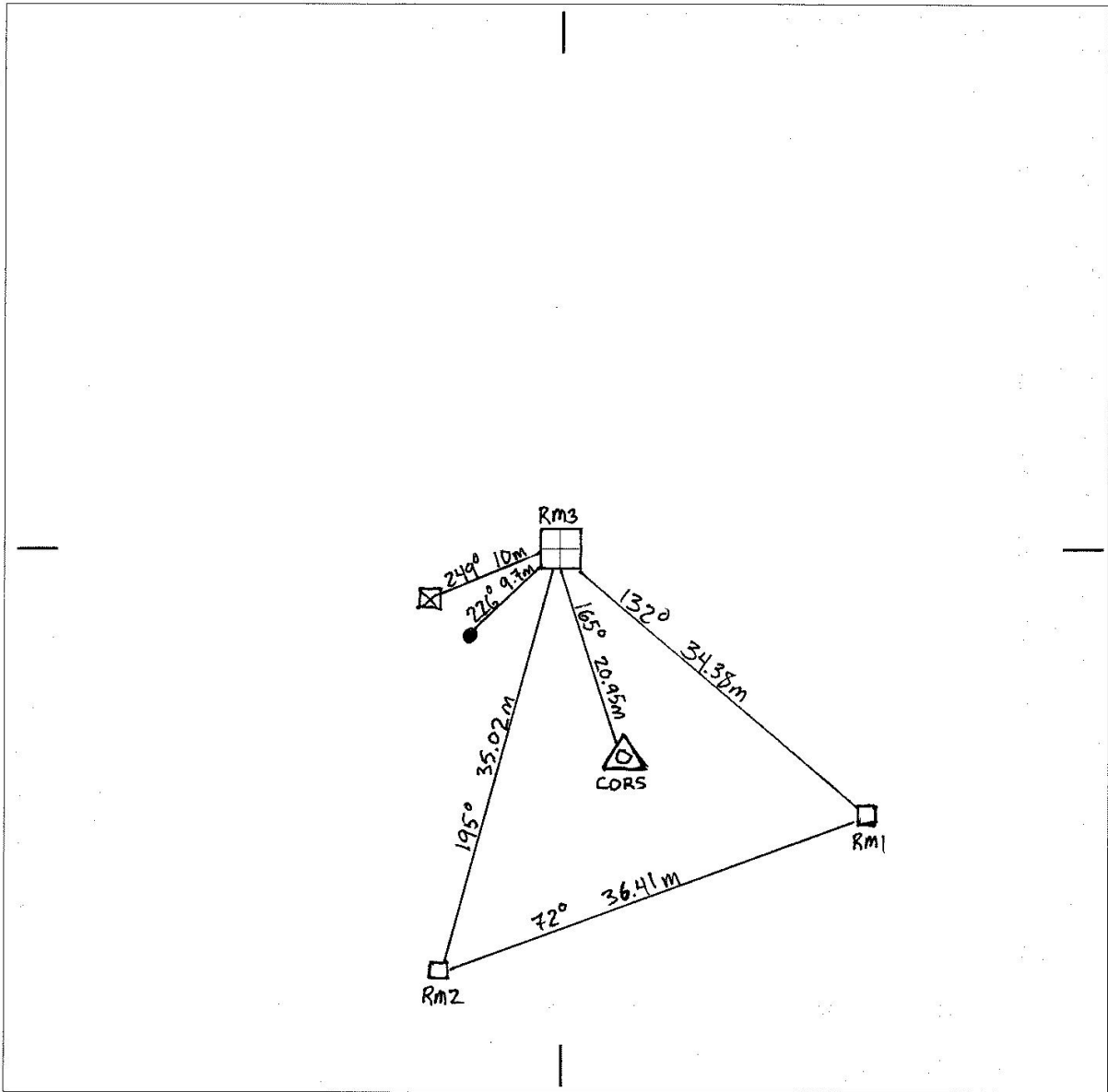
Approx MGA Coordinate: Zone 56

E: 450669.470 by RM Survey

N: 6644930.033

Office Use - Barcode Including Number Inserted Here

Description of Mark Reference Mark #3



Please use black ink only

SURVEYING REGULATION			
MARK	AHD	SOURCE	DATE
HEIGHT DETERMINED BY (Specify)		- DIFF. LEVELLING	- TRIG HEIGHTING
ADOPTED MARKS		- GPS	

Measurements are in metres

~~PM~~ TS 12222-3

~~SS~~

PM

Replaces

SS

I certify that the mark has been placed/found and numbered as detailed hereon.

Signed: Tom Grinter +

Name: Joel Haasdyk

Organisation placing mark: LPMA / LPI

Date mark placed/found: 17/10/2013

Ref: .....