

CENTRAL MAPPING AUTHORITY

Trigonometrical Survey of N.S.W.

Department of Lands

RECONNAISSANCE and MAINTENANCE REPORT 2014

STATION

JEW'S MOUNTAIN (P)

TS 5458

This Trig. Station has been:-

Note: Cross out word or words which do not apply

1. Completely cleared to permit 360° vision to surrounding Trigs.

2. Cleared by ~~vanes~~ bearing ~~from Trig. Mast~~

3. Trig. Mast & Vanes have been painted ~~white & black respectively.~~

4. The Trig. was unpiled/~~not unpiled~~ steel ~~dimensions now being~~

Description of mark Steel Pipe should be explicit, e.g. Steel plug, Brass plug, Bolt, G.I. Pipe

Height of mark 2.40 m ^{above} ~~below~~ rock/concrete 0.76 m above G.L.

Height of Top Vanes to Top Mark 2.40 m. Diameter of Vanes (vertical) 0.76 m.

Height of Cairn 1.0 m. Diameter of Cairn 2.20 m.

Length of Mast 2.40 m. (~~approximate if not specified~~)

5. A SSM set in conc/~~rock~~ has been placed 3.44 m. bearing 60°M from Trig. Mast

6. A set in conc/soil has been placed m. bearing °M from Trig. Mast

7. A set in conc/soil has been placed m. bearing °M from Trig. Mast

8. A set in conc/rock has been placed m. bearing °M from Trig. Mast

9. Connection to m. bearing °M

10. Connection to m. bearing °M

11. Connection to m. bearing °M

12. Connection to m. bearing °M

13. Diff. Ht. SSM is 0.18 m. ^{above} ~~below~~ Trig. Mast

14. Diff. Ht. is m. ^{above} ~~below~~

15. Diff. Ht. is m. ^{above} ~~below~~

16. Diff. Ht. is m. ^{above} ~~below~~

Prepared by: LM HAYES

Checked: C S MCELROY

Noted on U.T.M. Card

Co: ROX BULLUGH

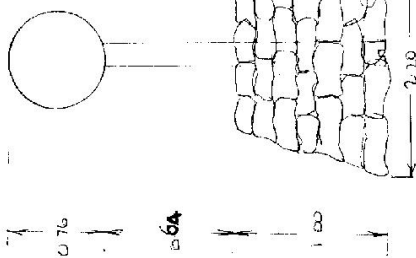
Map Sheet:

Inspected by: L M HAYES

Authority: DEPT OF LANDS

Beacon Diagram

Net to Scale



NB: When unpiled the masts were bad some of DISORDERLY - TIMBER MAST HAD BOTTLED & MISSED VANES WERE LACKING IN PAINT. TOWER WAS REPAIRED ONLY FOR THE SAKE OF LEAVING INDICATING ANGLES TO IT IT WILL BE REPAIRED FOR ANOTHER MAST & VANES TO BE USED TO REPAIR OLD ONES.

17/7/75

Date

BEACON LEFT DOWN DUE TO DISORDERLY (REPAIR)

Date

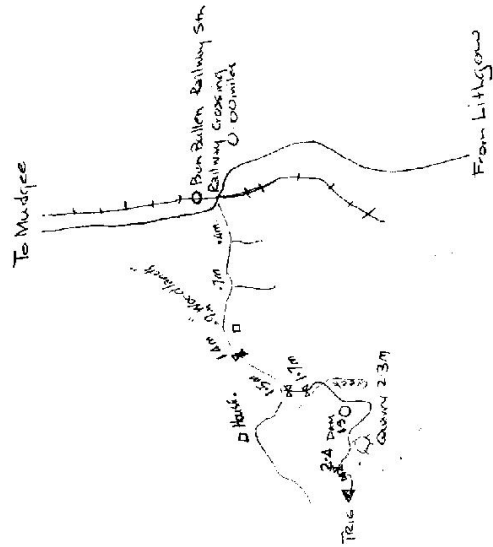
Record of Station

Checked

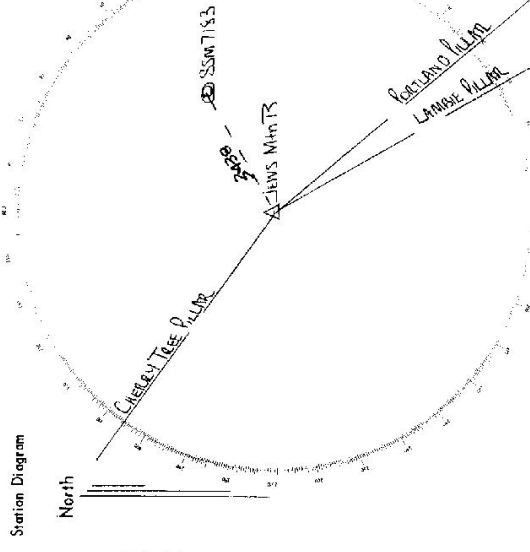
STATION **JEW MOUNTAINS** 5458

Owners Name.....
 Current Occupant.....
 Address.....
 Address.....

Access 15-5-1975
FOUR WHEEL DRIVE ACCESS



Not to Scale



List of Observed Directions: - 15/5/75

Station	Direction	Station	Direction
PORTLAND PILLAR	359° 59' 60"	PORTLAND PILLAR	359° 59' 60"
LAMBIE PILLAR	304° 56' 51.8"	CHEELEY TREE PILLAR	167° 50' 45.6"
WALKER IS	340° 51' 45"	SSM 7183	28° 15' 03"
PORTLAND PILLAR	349° 56' 04.1"		
BIRD'S ROCKS IS	298° 56' 00"		

AT TELIC RUG		AT TELIC RUG.	
Station	Direction	Station	Direction
LAMBIE PILLAR	359° 59' 60"	LAMBIE PILLAR	359° 59' 60"
WOLGAN GAP IS	304° 56' 51.8"	SSM 7183	271° 04' 50"
WALKER IS	340° 51' 45"	WALKER IS	340° 51' 45"
PORTLAND PILLAR	349° 56' 04.1"	PORTLAND PILLAR	349° 56' 04.1"

AT SSM 7183
 LAMBIE PILLAR 359° 59' 60"
 JEW MOUNTAINS 210° 01' 28"
 WALKER IS 340° 51' 45"
 PORTLAND PILLAR 349° 56' 26.5"
 WOLGAN GAP IS 304° 56' 49.5"

CENTRAL MAPPING AUTHORITY
Department of Lands

Trigonometrical Survey of N.S.W.

RECONNAISSANCE and MAINTENANCE REPORT

This Trig. Station has been:-

Note: Cross out word or words which do not apply

1. Completely cleared to permit 360° vision to surrounding Trig. ✓
2. Cleared by lanes bearing..... from Trig. Mast
3. Trig. Mast & Vanes have been painted white & black respectively. ✓
4. The Trig. was unpiled/~~not-unpiled~~, dimensions now being: *Original Mark Found.*

Description of mark *Calc. Observation Pillar*..... should be explicit, e.g. Steel plug, Brass plug, Bolt, G.I. Pipe

Height of mark..... m above rock/concrete .. *1.49* m above G.L. ✓

Height of Top Vanes to Top Mark... *1.400* m. Diameter of Vanes (vertical) *0.750* m.

Height of *Column*..... m. Diameter of *Column*..... m.

Length of Mast... *0.650* m. (approximate if not unpiled)

5. *Trig. Plug* set in ~~conc~~/*rock* has been placed. *2.643* m. bearing... *57*° from Trig. Mast

6. *S.S.M. 7183* set in conc/~~rock~~ has been placed. *5.906* m. bearing... *67*° from Trig. Mast

7. *G.I. Pipe* set in conc/~~rock~~ has been placed. *3.425* m. bearing... *108*° from Trig. Mast

8. *A* set in conc/~~rock~~ has been placed..... m. bearing.....° from Trig. Mast

9. Connection *Trig. Plug* to *S.S.M. 7183*: *3.436* m. bearing... *79*° M

10. Connection *Trig. Plug* to *G.I. Pipe*: *2.944* m. bearing... *156*° M

11. Connection..... to..... m. bearing.....° M

12. Connection..... to..... m. bearing.....° M

13. Diff. Ht. *Brass Trig. Plug in Rock*: *1.654* m. ^{above}/_{below} *Pillar. Plate*

14. Diff. Ht. *S.S.M. 7183 in Conc.*: *1.832* m. ^{above}/_{below} *Pillar. Plate*

15. Diff. Ht. *G.I. Pipe in Conc.*: *1.586* m. ^{above}/_{below} *Pillar. Plate*

16. Diff. Ht. *A*: *15* m. ^{above}/_{below}.....

Prepared by: *C. J. Brown* Checked: *M. Miller*

Noted on U.T.M. Card

Checked

STATION **JEWES MOUNT O.P. 5458**

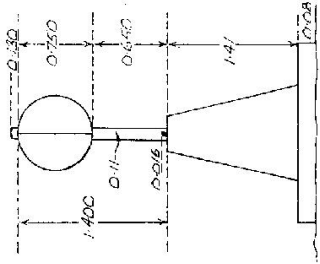
Co: **AOXBURGH** | Ph: **BEN BULLEN**

Map Sheet: **BATHURST** | No: **8831 - N**

Inspected by: **C. J. BROWN** | Date: **25th November 1973**

Authority: **C. M. A.** | Field Book: **1472**

Beacon Diagram Not to Scale

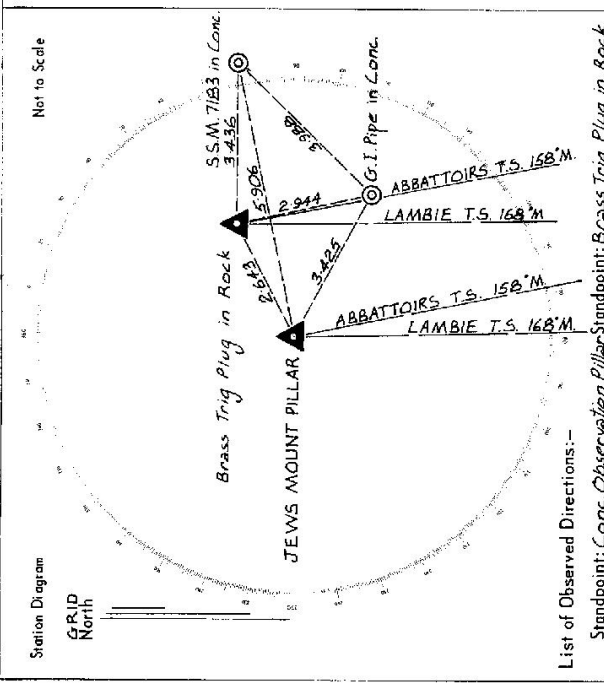


Date

Record of Station

STATION JEWES MOUNT O.P. 5458

Owners Name.....
 Address.....
 Current Occupant.....
 Address.....



List of Observed Directions:-

Standpoint: Conc. Observation Pillar Standpoint: Brass Trig Plug in Rock

Station	Direction	Station	Direction
ABBATTOIRS T.S.	359.59.60	ABBATTOIRS T.S.	359.59.60
LAMBIE T.S.	10.04.18	LAMBIE T.S.	10.03.50
Brass Trig Plug in Rock	283.29	Pillar Spigot	73.28
S.S.M. 7183 in Conc.	289.10.00	S.S.M. 7183 in Conc.	281.09
G.I. Pipe in Conc.	309.46	G.I. Pipe in Conc.	358.04

Station	Direction	Station	Direction

CENTRAL MAPPING AUTHORITY
Department of Lands

Trigonometrical Survey of N.S.W.

RECONNAISSANCE and MAINTENANCE REPORT

This Trig. Station has been:-

Note: Cross out word or words which do not apply

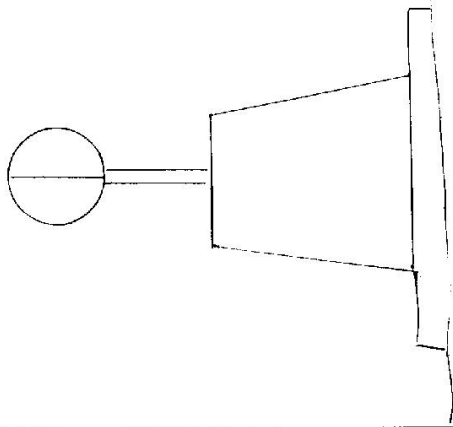
1. Completely cleared to permit 360° vision to surrounding Trigs.
2. Cleared by ~~lines-bearing~~ from Trig-Mast
3. Trig. Mast & Vanes have been painted white & black respectively.
4. The Trig. was unpiled/~~not-unpiled~~, dimensions now being:
Description of mark..... PILLAR PLATE..... should be explicit, e.g. Steel plug, Brass plug, Bolt, G.I. Pipe
Height of mark..... m ^{above} / _{below} rock/concrete m ^{above} / _{below} G.L.
Height of Top Vanes to Top Mark..... m. Diameter of Vanes (vertical)..... m.
Height of Cairn..... m. Diameter of Cairn..... m.
Length of Mast..... m. (approximate if not unpiled)

5. A..... set in conc/rock has been placed..... m. bearing.....°M from Trig. Mast
6. A..... set in conc/soil has been placed..... m. bearing.....°M from Trig. Mast
7. A..... set in conc/soil has been placed..... m. bearing.....°M from Trig. Mast
8. A..... set in conc/rock has been placed..... m. bearing.....°M from Trig. Mast
9. Connection..... to..... m. bearing.....°M
10. Connection..... to..... m. bearing.....°M
11. Connection..... to..... m. bearing.....°M
12. Connection..... to..... m. bearing.....°M
13. Diff. Ht. is..... m. ^{above} / _{below}
14. Diff. Ht. is..... m. ^{above} / _{below}
15. Diff. Ht. is..... m. ^{above} / _{below}
16. Diff. Ht. is..... m. ^{above} / _{below}

Prepared by: Alan Checked: _____

Noted on U.T.M. Card

74.98
IS 5458
STATION JEWS MOUNT G.S.O.P.
Cap: ROXBURGH | Ph: BEN BULLEN
Map Sheet: BATHURST | No: 8831
Inspected by: P CARR | Date: 17/2/77
Authority: C.M.A. | Field Book:
Beacon Diagram Net to Scale



Date	Record of Station

Checked

GEODETIC SURVEY OF N.S.W.

CENTRAL MAPPING AUTHORITY

GEODETIC STATION RECONNAISSANCE and MAINTENANCE REPORT

STATION: **JEWES MTN GSDP** No.: **5458**

MAP SHEET
SCALE 1:250 000

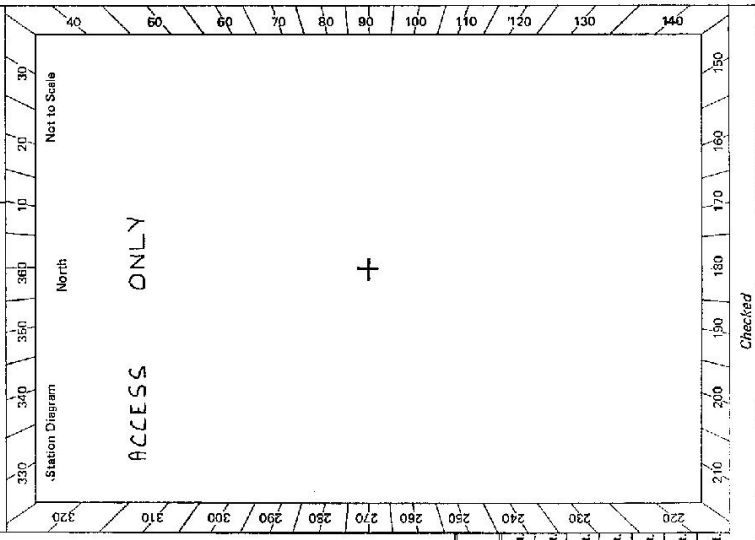
INSPECTED BY: **D. Fredriksen**

DATE: **3 - 1 - 79**

AUTHORITY:

FIELD BOOK:

- Description:
- Cleared by lanes bearing..... from Trig. Mast
Note: Cross out word or words which do not apply
 - Mast & Vanes have been painted white & black respectively.
 - The station/pillar was unpiled/not unpiled/constructed on.....10....., dimensions now being:
Description of mark.....should be explicit, e.g., S/Steel Pillar Plate, Steel plug, Brass plug, Bolt, G.I. Pipe
Height of mark.....m. ^{above} _{below} rock/concrete; Mark is.....m. ^{above} _{below} G.L.
 - Height of Top Vanes to Top Mark/Pillar platem. Diameter of Vanes (vertical).....m.
 - Height of Cairn.....m. Diameter of Cairn.....m. Name Plate found/not found/placed.
 - Length of Mast.....m. (approximate if not unpiled)
 - A.....set in conc/rock has been placed/found, bearing.....° M from Mast/Plug/Pillar
 - A.....set in conc/rock has been placed/found, bearing.....° M from Mast/Plug/Pillar
 - A.....set in conc/rock has been placed/found, bearing.....° M from Mast/Plug/Pillar
 - A.....set in conc/rock has been placed/found, bearing.....° M from Mast/Plug/Pillar
 - Action required:.....



STANDPOINT:

Mark	Direction	Horiz. Distance	Height Difference	Mark	Direction	Horiz. Distance	Height Difference
			above standpt.				above standpt.
			below				below
			above standpt.				above standpt.
			below				below
			above standpt.				above standpt.
			below				below
			above standpt.				above standpt.
			below				below
			above standpt.				above standpt.
			below				below
			above standpt.				above standpt.
			below				below

Prepared by:
Checked:
Notes on U.T.M. Card

St 2733 - 2 D. Watt, Government Printer

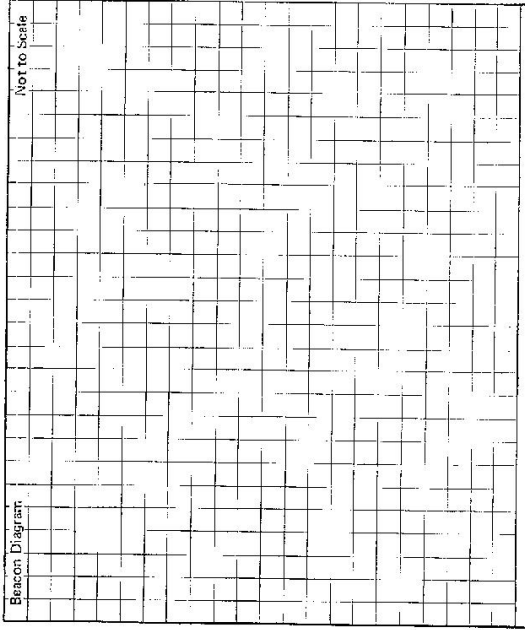
STATION **JEW'S MOUNTAIN G.S.O.P 5458**

Owner's Name:
 Address:
 Phone:
 Current Occupant:
 Address:
 Phone:

ACCESS 3-1-1979

Access Report of 15.7.5/19.75 was found suitable; unsuitable
 Feature

<u>Kms.</u>	Ben Bullen railway X-ing head west
0.0	Grid and end of bitumen
1.1	Gate
2.2	Turn LEFT off road at house turn off just after gully crossing
2.45	Iron Gate
2.5	Iron Gate
2.7	Track veers left at fence corner in gully
2.8	Dam on R.H.S.
3.1	Turn Right just before embankment and proceed up into saddle just before old quarry
3.4	In saddle veer left and follow spur
3.7	Through 2 gates
3.9	At trig.
4.1	



This section to be completed by officer constructing pillar.

Original station mark found/not found.

Description of mark:

Original beacon found/not found.

Description of beacon:

Height Top of Vanes to Top Markm.

Height of markm. above rock/concm. below C.L.

Diameter of Vanesm. Height of Cairnm.

Original Beacon has/has not been destroyed by ms.

Date	Beacon of Station