

12-19-3

Department of Lands

Integrated Survey of N.S.W.

RECONNAISSANCE and MAINTENANCE REPORT 10271

STATION MOOLA T.S (P) 10271

Co: COOK Ph: JAMISON

Map Sheet: Katoomba No: 8930-1-S

Inspected by: L.M HAYES Date: 20-10-76

Authority: Dept of Lands Field Book: P100130

Beacon Diagram: Not to Scale

This Trig. Station has been:-

1. Completely cleared to permit 360° vision to surrounding Trigs.
2. Cleared by limes bearing
3. Trig. Mast & Vanes have been painted white & black respectively. ✓
4. The Trig. was unpiled/~~not unpiled~~, dimensions now being:

Description of mark: Steel rooftop pillar should be explicit, e.g. Steel plug, Brass plug, Bolt, Concrete Pillar

Height of mark: rock/concrete m above rock/concrete m below G.L.

Height of Top Vanes to ~~Top~~ Top pillar plate: rock/concrete m Diameter of Vanes (vertical): rock/concrete m.

Height of Cairn: rock/concrete m. Diameter of Cairn: rock/concrete m.

Length of Mast: rock/concrete m. (approximate if not unpiled)

5. A. ~~set in conc/rock has been placed/fd~~ m. bearing ~~0°M from Trig. Mast/pillar~~

6. A. ~~set in conc/soil has been placed/fd~~ m. bearing ~~0°M from Trig. Mast/pillar~~

7. A. ~~set in conc/soil has been placed/fd~~ m. bearing ~~0°M from Trig. Mast/pillar~~

8. A. ~~set in conc/rock has been placed/fd~~ m. bearing ~~0°M from Trig. Mast/pillar~~

9. Connection: ~~to~~ m. bearing ~~0°M~~

10. Connection: ~~to~~ m. bearing ~~0°M~~

11. Connection: ~~to~~ m. bearing ~~0°M~~

12. Connection: ~~to~~ m. bearing ~~0°M~~

13. Diff. Ht. ~~is~~ ^{above} ~~is~~ ^{below} m.

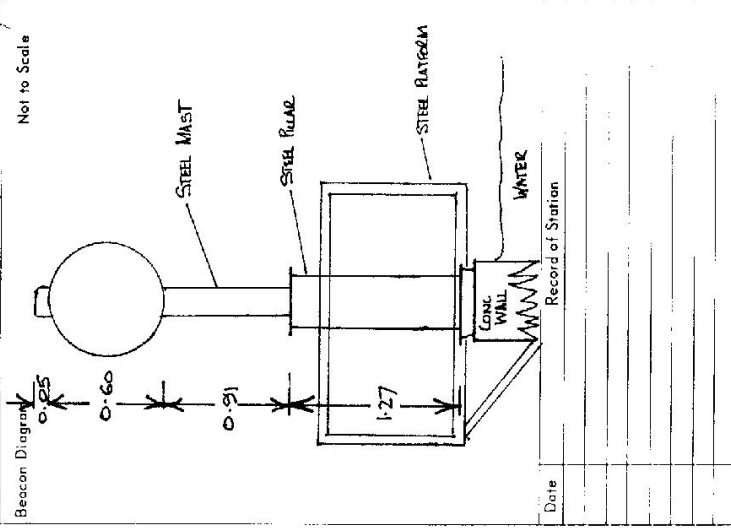
14. Diff. Ht. ~~is~~ ^{above} ~~is~~ ^{below} m.

15. Diff. Ht. ~~is~~ ^{above} ~~is~~ ^{below} m.

16. Diff. Ht. ~~is~~ ^{above} ~~is~~ ^{below} m.

Prepared by: L.M HAYES 21/10/76

Checked:



Date

STATION 10271 MOOLA TS (P)

Current Occupant

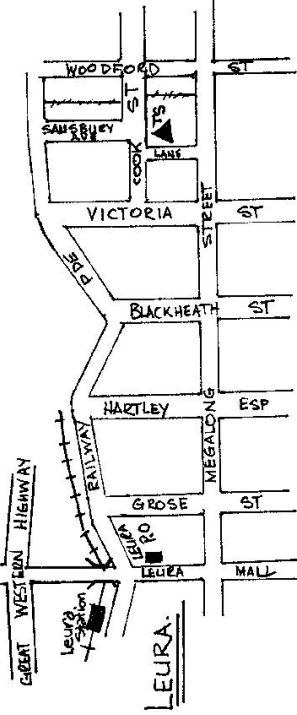
Owners Name: Blue Mountains Council

Address: Council Offices
Katoomba

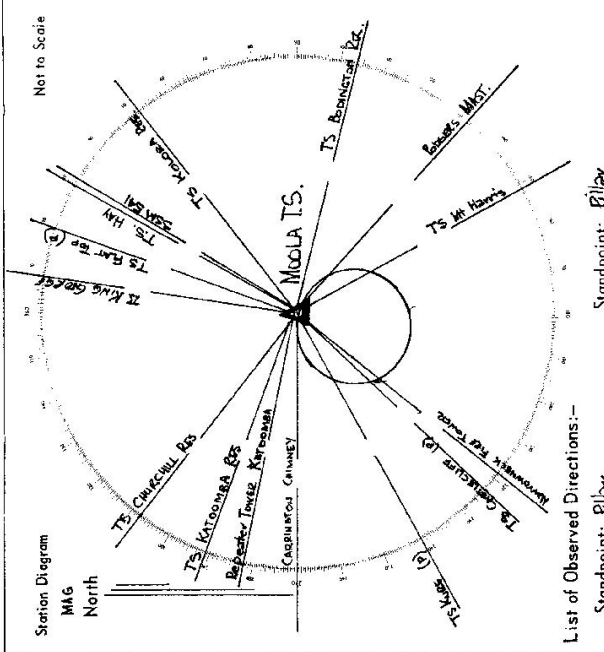
Access: 20-10-1976
Conventional Vehicle

Note Key for access is available at Blue Mountains Council Katoomba. -- For heavy gear to be used at this station it is advisable to use a strong rope to get gear to platform as the ladder to top has no safety cage.

Access: From Laneway off Megalong St



D. West, Government Printer, New South Wales - 1976



List of Observed Directions:-

Standpoint: Pillar		Standpoint: Pillar	
Station	Direction	Station	Direction
Beddingfong TS (Res)	359 59' 50"	Hay TS	285 09' 00"
Paddy's Tower	38 57' 55.2"	Salm B&L	308 40' 02"
Mt Harris TS	47 51' 58"	Kolowa TS (Res)	308 10' 04"
Nerrawinec Fire Tower	115 21' 07"	NERRAWINEC TS	115 24' 38"
Castle Cliff TS (P)	128 29' 21"		
Kure TS (P)	177 05' 27"		
Carrington Chimney	185 23' 10"		
Repeater Tower Katoomba	178 27' 38"		
Katoomba TS (Res)	187 45' 09"		
Churehill TS (Res)	204 56' 38.2"		
King George TS	224 01' 15"		
Flat Top (P)	275 37' 15"		