

7-193

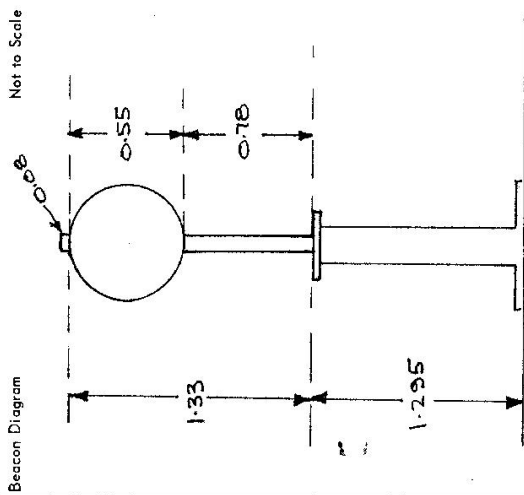
Department of Lands Integral Survey of N. S. W. RECONNAISSANCE and MAINTENANCE REPORT

STATION TS 10624 BROADWAY [P]
 COUMBERLAND | CITY OF SYDNEY
 Map Sheet: SYDNEY | No: 1845
 Inspected by: H.G. HELSHAM | Date: 2 APR 1979
 Authority: INTEGRATION SURVEYS | Field Book: 1306

This Trig. Station has been: Note: Cross out word or words which do not apply

1. Completely cleared to permit 360° vision to surrounding Trias.
2. Cleared by limes bearing from Trig-Mast
3. Trig. Mast & Vanes have been painted white & black respectively. ✓
4. The Trig. was unpiled/not unpiled, dimensions now being:
 - Description of mark: Steel Pillar should be explicit, e.g. Steel plug, Brass plug, Bolt, Concrete Pillar
 - Height of mark: rock/concrete roof above 0.55 m below G.L.
 - Height of Top Vanes to Top-Mark/Top pillar plate: 0.78 m Diameter of Vanes (vertical).....m.
 - Height of Cairn: 0.00 m Diameter of Cairn.....m.
 - Length of Mast: 1.33 m. (approximate-if not-unpiled)
5. A set in conc/rock has been placed/d 0.00 m-bearing 0.00 m from Trig-Mast/pillar
6. A set in conc/soil has been placed/d 0.00 m-bearing 0.00 m from Trig-Mast/pillar
7. A set in conc/soil has been placed/d 0.00 m-bearing 0.00 m from Trig-Mast/pillar
8. A set in conc/rock has been placed/d 1.295 m-bearing 0.00 m from Trig-Mast/pillar
9. Connection to 0.00 m-bearing 0.00 m
10. Connection to 0.00 m-bearing 0.00 m
11. Connection to 0.00 m-bearing 0.00 m
12. Connection to 0.00 m-bearing 0.00 m
13. Diff. Ht. 0.00 m. above below
14. Diff. Ht. 0.00 m. above below
15. Diff. Ht. 0.00 m. above below
16. Diff. Ht. 0.00 m. above below

Prepared by: H.G. Hershman Checked:



Date	Record of Station
2/4/78	H.G. HERSHAM - OCCUPATION & FIXATION

STATION 10624 BROADWAY [P]

Owners Name: DEPT. of T.A.F.E.

Current Occupant:

Address: NSW Institute of Technology

Address:

2-4-1979

Access: Parking in Basement of Building 1 (Level 2). Entry from Thomas St, Ultimo.

Access to TS on roof (Level 33)

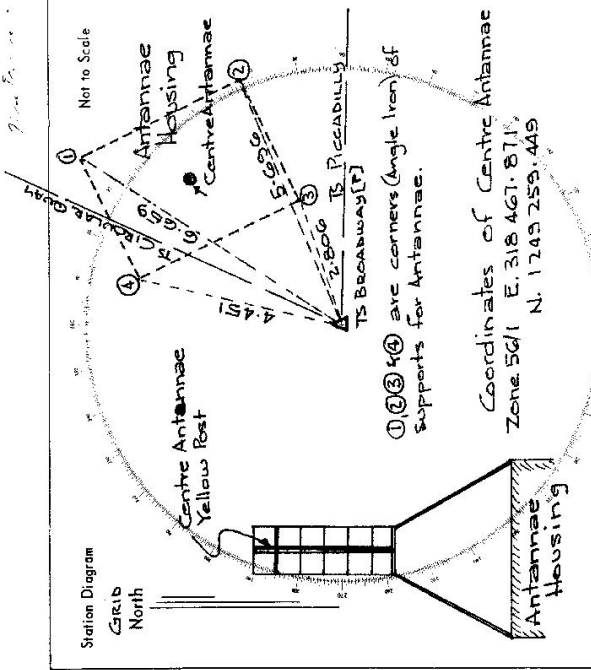
Take lift from level 2 to Reception desk Level 4. A security officer will open lift (2 or 6 only) to gain access to level 28.

At level 28 take small lift to level 32 (Antennae Laboratory). Then up one flight of stairs to roof and TS.

Security officer may have to open two fire doors between Antennae Laboratory and Roof.

Note: A security officer is needed with keys for the upward journey.

All doors and lifts can be operated on the downward journey.



List of Observed Directions: - From FB 01 1306 Folio 2

Station	Direction	Station	Direction
TS Circular Quay (P)	159 00 00		
①	74 36 57		
②	59 17 36		
③	62 57 50		
TS Piccadilly (P)	83 28 39		
④	4 46 03		

