

25.18

Department of Lands
 RECONNAISSANCE and MAINTENANCE REPORT

Integrated survey of N.S.W.

This Trig. Station has been:-

Note: Cross out word or words which do not apply

1. Completely cleared to permit 360° vision to surrounding ~~trigon~~
2. Cleared by lanes bearing 20°M to 260°M from Trig. Mast
3. Trig. Mast & Vanes have been painted white & black respectively. ✓
4. The Trig. was unpiled/~~not unpiled~~, dimensions now being:
 - Description of mark: **ROOFTOP BEACON** should be explicit, e.g. Steel plug, Brass plug, Bolt, Concrete Pillar
 - Height of mark: 1.305 m above ~~rock~~ concrete **1.305** m above G.L.
 - Height of Top Vanes to ~~top of pillar~~ Top pillar plate 1.445 m Diameter of Vanes (vertical) 0.60 m.
 - Height of Cairn: 1.235 m. Diameter of Cairn m.
 - Length of Mast: 1.525 m. (approximate if not unpiled)
5. A ~~Copper Spike~~ set in conc/~~rock~~ has been placed at 3.516 m bearing 340°M from Trig. ~~Mast~~ pillar
6. A ~~SSM~~ **SSM** set in ~~concretion~~ **rock** has been placed at 5.761 m bearing 233°M from Trig. ~~Mast~~ pillar
7. A ~~Bolt~~ set in conc/~~rock~~ has been placed at 34.643 m bearing 180°M from Trig. ~~Mast~~ pillar
8. A set in conc/rock has been placed at m bearing°M from Trig. Mast/pillar
9. Connection ~~SSM~~ to ~~Spike~~ **7.77** m bearing 26°M
10. Connection ~~SSM~~ to ~~Bolt~~ **31.062** m bearing 160°M
11. Connection to m bearing°M
12. Connection to m bearing°M
13. Diff. Ht. ~~SSM~~ is 1.464 m ~~above~~ **Pillar Plate**
14. Diff. Ht. ~~Bolt~~ is 3.326 m ~~below~~ **Pillar Plate**
15. Diff. Ht. ~~Copper Spike~~ is 1.523 m ~~below~~ **Pillar Plate**
16. Diff. Ht. is m ~~above~~ **below**

Prepared by: **L.M. HAYES** Checked: _____

STATION TS 10623 MYOORA (P)

Co: NORTHUMBERLAND Pt: NARARA

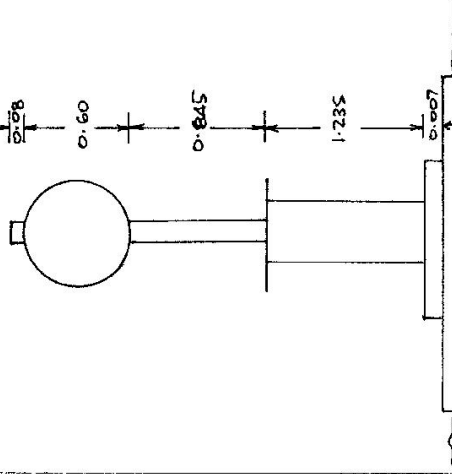
Map Sheet: GOSFORD 1:25,000 No: 9131-11-S

Inspected by: L.M. HAYES Date: MARCH 1979

Authority DEPT LANDS Field Book: 1291

Beacon Diagram

Not to Scale



Date: 25-3-79

Record of Station: **Pillar erected.**

CENTRAL MAPPING / THORITY

GEODETTIC SURVEY OF N.S.W.

GEODETTIC STATION RECONNAISSANCE and MAINTENANCE REPORT

Description:

1. Cleared by Vane bearing.....
Note: Cross out word or words which do not apply
2. Mast & Vane have been painted white & black respectively.
..... from Trig. Mast
3. The station/pillar was unpiled/constructed on..... 19....., dimensions now being:
Description of mark.....
Height of mark..... m. ^{above} _{below} rock/concrete. Mark is..... m. ^{above} _{below} G.L.

4. A..... m. Diameter of Cairn..... m. Name Plate found/not found/placed.
Length of Mast..... m. (approximate if not unpiled)
5. A..... set in conc/rock has been placed/found, bearing..... ° M from Mast/Plug/Pillar
6. A..... set in conc/rock has been placed/found, bearing..... ° M from Mast/Plug/Pillar
7. A..... set in conc/rock has been placed/found, bearing..... ° M from Mast/Plug/Pillar

B. Action required:.....

STANDPOINT:

STANDPOINT:

Mark	Direction	Horiz. Distance	Height Difference	Mark	Direction	Horiz. Distance	Height Difference
			above standpt				above standpt
			below				below
			above standpt				above standpt
			below				below
			above standpt				above standpt
			below				below
			above standpt				above standpt
			below				below
			above standpt				above standpt
			below				below
			above standpt				above standpt
			below				below

Prepared by: O. Moss

Checked: Noted on U.T.M. Card

STATION: MYOORA T.S. No.: 10623
 MAP SHEETS SCALE 1:100 000 SYDNEY GOSFORD
 INSPECTED BY: O. MOSS DATE: OCT. 1984
 AUTHORITY: C. M. A. FIELD BOOK:

