

CENTRAL MAPPING AUTHORITY
Department of Lands

Trigonometrical Survey of N.S.W.

RECONNAISSANCE & MAINTENANCE REPORT 10436

STATION KOLGDON TS (P) 10436

This Trig. Station has been:-

Co: Macquarie | Pht: Taree

Map Sheet: Taree | No: 9334-11-9

Inspected by: Erected by P.R. Hudson | Date: March 1976

Authority LANDS DEPT | Field Book: 4757-58 P25

Beacon Diagram | Not to Scale

Note: Cross out word or words which do not apply

1. Completely cleared to permit 360° vision to surrounding Trigs.

2. Cleared by lanes bearing..... from Trig. Mast

3. Trig. Mast & Vanes have been painted white & black respectively.

4. The Trig. was unpiled/not unpiled, dimensions now being:

Description of mark..... should be explicit, e.g. Steel plug, Brass plug, Bolt, G.I. Pipe

Height of mark..... m above ~~rock~~ concrete..... m above below G.L.

Height of Top Vanes to Top ~~Mark~~ ^{Pillar/Mark}..... m. Diameter of Vanes (vertical): 60..... m.

Height of ~~Cairn~~ ^{Pillar}..... m. Diameter of Cairn..... m.

Length of Mast 1.22..... m. (approximate if not unpiled)

5. A..... set in conc/rock has been placed..... m. bearing.....°M from Trig. Mast

6. A..... set in conc/soil has been placed..... m. bearing.....°M from Trig. Mast

7. A..... set in conc/soil has been placed..... m. bearing.....°M from Trig. Mast

8. A..... set in conc/rock has been placed..... m. bearing.....°M from Trig. Mast

9. Connection..... to..... m. bearing.....°M

10. Connection..... to..... m. bearing.....°M

11. Connection..... to..... m. bearing.....°M

12. Connection..... to..... m. bearing.....°M

13. Diff. Ht. is..... m. ^{above} _{below}

14. Diff. Ht. is..... m. ^{above} _{below}

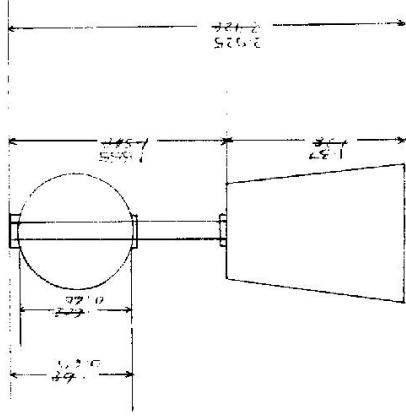
15. Diff. Ht. is..... m. ^{above} _{below}

16. Diff. Ht. is..... m. ^{above} _{below}

Prepared by:

Checked:

Noted on U.T.M. Card



Record of Station

Date

Mar 76 Erected.

27-7-77 Observations commenced

