

CENTRAL MAPPING AUTHORITY

Trigonometrical Survey of N.S.W.

7-4-96

Department of Lands

RECONNAISSANCE MAINTENANCE REPORT

STATION WINGHAM RES T.S. 10434

This Trig. Station has been:-

Note: Cross out word or words which do not apply

1. Completely cleared to permit 360° vision to surrounding Trigs.
2. Cleared by lances bearing..... from Trig. Mast
3. Trig. Mast & Vanes have been painted white & black respectively. ✓
4. The Trig. was unpiled/not unpiled, dimensions now being:

Description of mark..... Conc. Pillar - 5/8 plate..... should be explicit, e.g. Steel plug, Brass plug, Bolt, G.L. Pipe

Height of mark..... 1.37 m above below rock/concrete..... m above below G.L.

Height of Top Vanes to Top Mark..... 1.49 m. Diameter of Vanes (vertical)..... 0.60 m.

Height of Cairn..... m. Diameter of Cairn..... m.

Length of Mast..... m. (approximate if not unpiled)

5. A..... set in conc/rock has been placed..... m. bearing.....°M from Trig. Mast
6. A..... set in conc/soil has been placed..... m. bearing.....°M from Trig. Mast
7. A..... set in conc/soil has been placed..... m. bearing.....°M from Trig. Mast
8. A..... set in conc/rock has been placed..... m. bearing.....°M from Trig. Mast

9. Connection..... to..... m. bearing.....°M

10. Connection..... to..... m. bearing.....°M

11. Connection..... to..... m. bearing.....°M

12. Connection..... to..... m. bearing.....°M

13. Diff. Ht. is..... m. above below.....

14. Diff. Ht. is..... m. above below.....

15. Diff. Ht. is..... m. above below.....

16. Diff. Ht. is..... m. above below.....

Prepared by:

Checked:

Noted on U.T.M. Card

Co: GLOUCESTER

Ph: WINGHAM

Map Sheet:

No:

Inspected by: P. Holton

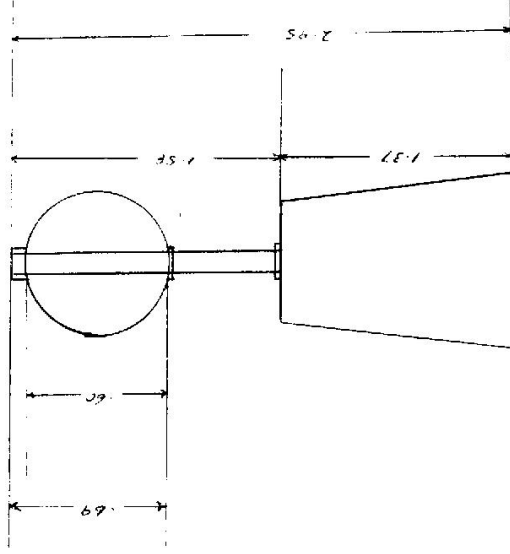
Date: 2 8 77

Authority LANDS DEPT

Field Book: PP-933P-31

Beacon Diagram

Not to Scale



Date

Record of Station

Mar 76 Erected

2-8-77 Observations carried out

Checked

