

75 103

Department of Lands

Integratio ivy of N.S.W.

RECONNAISSANCE and MAINTENANCE REPORT

This Trig. Station has been:-

Note: Cross out word or words which do not apply

1. Completely cleared to permit 360° vision to surrounding Trigs. ✓
2. Cleared by lanes bearing..... cleared ..... from Trig. Mast
3. Trig. Mast & Vanes have been painted white & black respectively. ✓
4. The Trig. was unpiled/not unpiled, dimensions now being:

Description of mark Concrete Pillar..... should be explicit, e.g. Steel plug, Brass plug, Bolt, Concrete Pillar

Height of mark..... 1.375 ..... m above rock concrete ..... m above below G.L.  
 Height of Top Vanes to ~~Top pillar plate~~ Top pillar plate 1.31 m Diameter of Vanes (vertical) 60 m.

Height of Cairn..... m. Diameter of Cairn..... m.

Length of Mast..... 1.45 ..... m. (approximate if not unpiled)

5. A. 6.11 set in conc/~~rock~~ has been placed/~~to~~ 5.01 m bearing 230 °M from Trig. Mast/pillar
6. A. 6.11 set in conc/~~rock~~ has been placed/~~to~~ 5.840 bearing 50 °M from Trig. Mast/pillar
7. A. 6.11 set in conc/~~rock~~ has been placed/~~to~~ 6.864 n. bearing 150 °M from Trig. Mast/pillar
8. A. 15.36 set in conc/~~rock~~ has been placed/~~to~~ 2.802 m bearing 132 °M from Trig. Mast/pillar
9. A screw set in conc has been ~~found~~ found to 385 m bearing 138 °M from Trig. pillar
- Connection screw to bolts..... 4.341 m bearing 286 °M
10. Connection screw to Bolt A..... 12.101 m bearing 290 °M
11. Connection screw to A15.36..... 7.580 m bearing 320 °M
12. Connection screw to 6.11 bearing 1.602 m bearing 15 °M below pillar plate
13. Diff. Ht. Bolt A..... is 1.532 m below Pillar plate
14. Diff. Ht. Bolt B..... is 1.757 m below Pillar plate
15. Diff. Ht. Bolt C..... is 1.200 m below Pillar plate
16. Diff. Ht. A.15.36..... is 1.354 m below Pillar plate

Prepared by: H. J. Green

Checked: David Beal

STATION DOUGLAS PARK (P) T.S. 10421

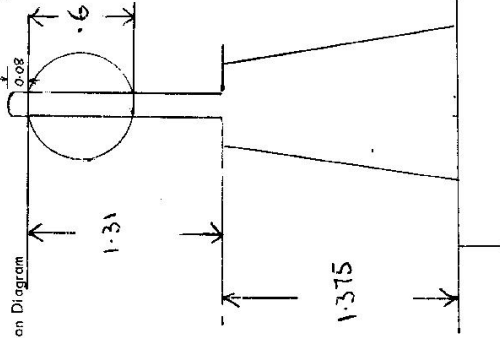
Co: CAMDEN Ph: CAMDEN

Map Sheet: DOUGLAS PARK No: 7315

Inspected by: H. J. Green Date: 24-8-76

Authority: Investigation Surveys Field Book: Misc Book

Beacon Diagram: PPP 521 Not to Scale



Date: \_\_\_\_\_ Record of Station

30-7-76 Pillar Erected on 24-8-76

29-4-77 Water set in 17m dia. CAMDEN Book 644

H. J. Green

STATION DOUGLAS PARK (P) TS 10421

Current Occupant.....

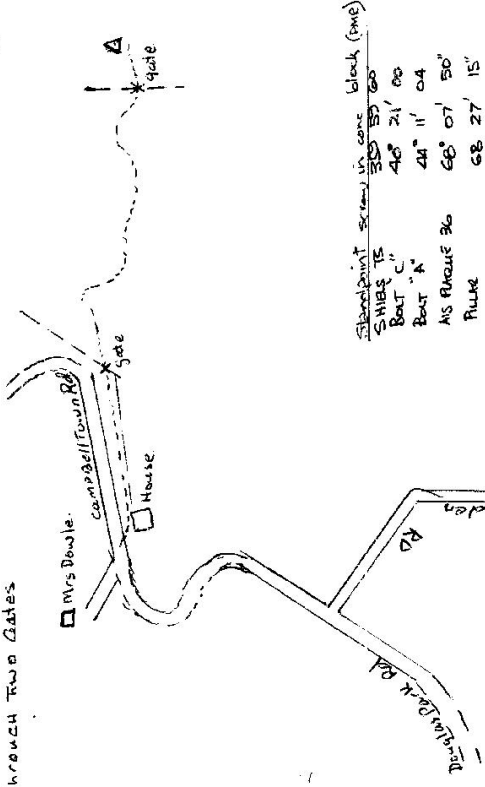
Address.....

Owners Name: MRS. DAWELE...

Address: SPANARDS HILL

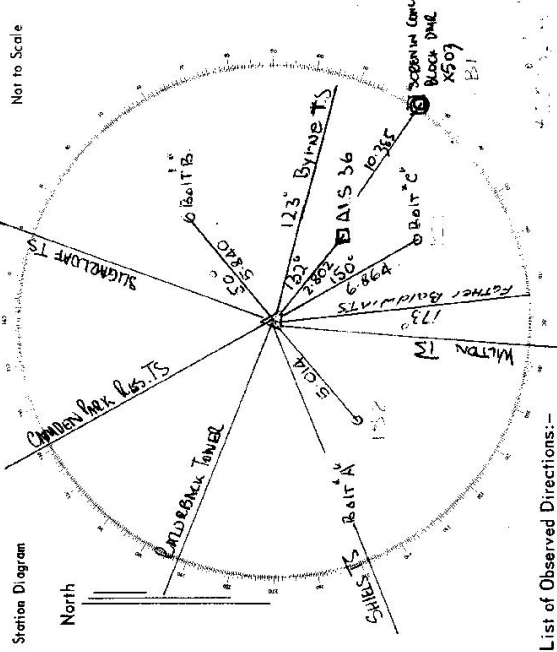
DOUGLASS PARK

From Douglas Park Railway Take Camelon Rd For 1 Km Then Access Turn Right onto Campbelltown Rd. Go For 1 Km To Top of Hill Then Turn Right along Fence and Follow Track to TS 1 km. By Passing Through Two Gates



Standpoint Screen in case block (PWE)  
 SHIES TS 350° 59' 60"  
 Bolt "C" 46° 21' 00"  
 Bolt "A" 44° 11' 04"  
 HIS RAQUE 36 60° 07' 50"  
 RILKE 68° 27' 15"  
 FATHER BALDWIN 208° 12' 14"

Not to Scale



List of Observed Directions:-

Station	Direction	Station	Direction
FATHER BALDWIN TS	309° 59' 60"	SHIES TS	359° 59' 60"
Bolt A	57° 43' 24"	RADOBACK TOWER	41° 54' 10"
Bolt B	73° 43' 00"	CAMDEN PARK TS	84° 04' 01"
BYRNE TS	305° 47' 00"	SUGARLOAF TS	84° 20' 36"
ALS 36	321° 05' 18"	BYRNE TS	238° 01' 01"
		FATHER BALDWIN TS	208° 14' 00"
		WILTON TS	299° 18' 24"
Bolt C	337° 37' 36"	SHIES	359° 59' 60"
		Screen in case block (PWE)	208° 31' 02"
		HIS RAQUE 36 one block	209° 25' 14"
		Bolt "C"	46° 53' 20"
		FATHER BALDWIN	208° 14' 00"
		Bolt "A"	44° 59' 06"