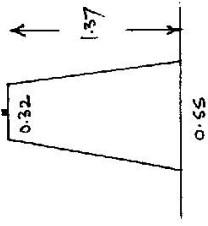


STATION TS 10373 (ELIZABETH [F])  
 Co: COOK | Ph: STRATHDON  
 Map Sheet: PENRITH | No: U6460-IV  
 Inspected by: D.A.K. VINCENT | Date: 23.8.77  
 Authority: DEPT. OF LANDS | Field Book: G17/1  
 Beacon Diagram: Not to Scale



Direction lines to distant towns are engraved on this steel plate. It was advised by the Blue Mountains City Council not to erect a mast & vanes on this pillar.

Date	Record of Station

Department of Lands  
 Reconnaissance and Maintenance Report

This Trig. Station has been:-  
 1. Completely cleared to permit 360° vision to surrounding trig.  
 2. Cleared by lanes bearing 60° M. to 140° M. from Trig. Mast  
 3. Trig. Mast & Vanes have been painted white & black respectively.

4. The Trig. was unpiled/not unpiled, dimensions now being:  
 Description of mark Steel plate on concrete pillar should be explicit, e.g. Steel plug, Brass plug, Bolt, Concrete Pillar  
 Height of mark: 1.37 m <sup>above</sup> rock, concrete <sup>below</sup> G.L.  
 Height of Top Vanes to Top Mark/Top pillar plate:   m Diameter of Vanes (vertical):   m.  
 Height of Cairn:   m. Diameter of Cairn:   m.

Length of Mast:   m. (approximate if not unpiled)  
 5. SSM 12955 set in conc/rock has been placed/fd 5.208 m. bearing 282° 35' 45" from Trig. ~~Mast~~ pillar  
 6. Lead plug set in conc/rock has been placed/fd 5.981 m. bearing 39° 37' 10" from Trig. ~~Mast~~ pillar  
 7. A set in conc/sail has been placed/fd   m. bearing   °M from Trig. Mast/pillar  
 8. A set in conc/rock has been placed/fd   m. bearing   °M from Trig. Mast/pillar

9. Connection:   to   m. bearing   °M  
 10. Connection:   to   m. bearing   °M  
 11. Connection:   to   m. bearing   °M  
 12. Connection:   to   m. bearing   °M  
 13. Diff. Ht. Pillar plate is 0.366 m. <sup>above</sup> SSM 12955  
 14. Diff. Ht. Pillar plate is 2.03 m. <sup>above</sup> Lead plug  
 15. Diff. Ht.   is   m. <sup>above</sup>    
 16. Diff. Ht.   is   m. <sup>above</sup>  

Prepared by: [Signature] Checked: [Signature]

STATION T S 10373 (ELIZABETH [P])

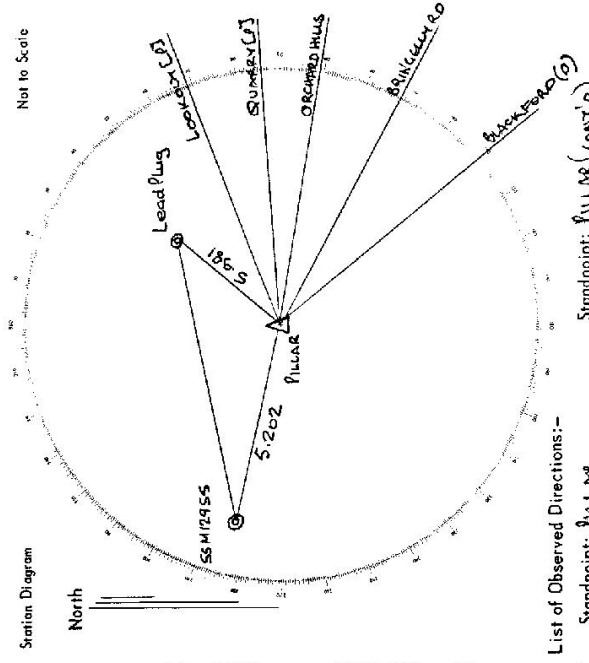
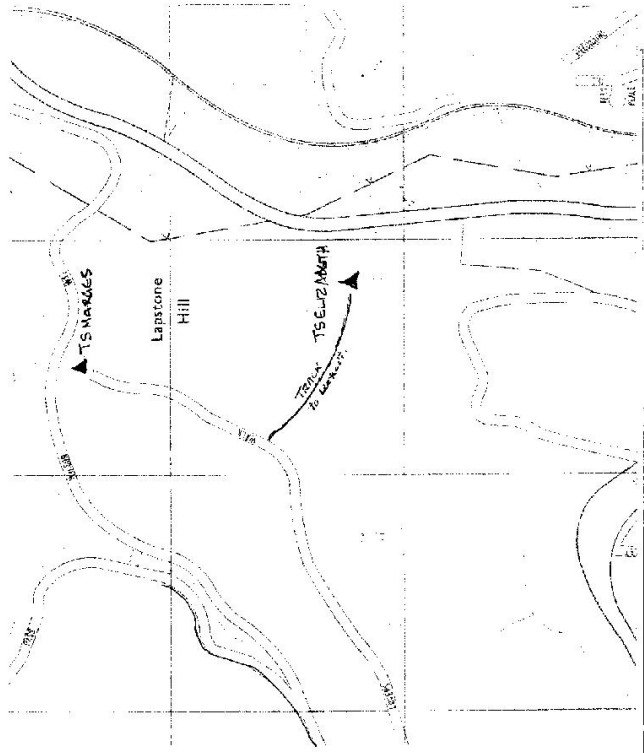
Current Occupant

Owners Name

Address

Address

Access 23-8-1977  
UBD J7 (11th Edition)



List of Observed Directions:-

Station	Direction	Station	Direction
Lookout (P)	69 50 00	SSM12955	233 55 43
Quarry (P)	86 57 00	Lead Plug	383 37 11
Orchard Hills	99 45 20		
Brinkley Rd	118 47 24		
Blackford (P)	140 28 20		

Standpoint: Pillar (Cont'd)

Station	Direction	Station	Direction