

Department of Lands Integral Survey of N.S.W.

RECONNAISSANCE and MAINTENANCE REPORT

STATION **10368** **BNH PLAINS (P)**

Note: Cross out word or words which do not apply

This Trig. Station has been:

1. Completely cleared to permit 360° vision to surrounding Trigs.
2. Cleared by lones bearing.

from Trig. Mast

Co: _____ No: _____
 Inspected by: _____ Date: _____
 Authority: _____ Field Book: _____

Beacon Diagram Not to Scale

ABSTRACT OF OBSERVATIONS

STATION	ILL.	Dist. in metres at M.S.C.	Variance	Inst.	Observer	Date
To						
8468	13	30.75				
18	192	60.00				
		108.81				
		165.62				
		225.00				
		285.00				
		345.00				
		405.00				
		465.00				
		525.00				
		585.00				
		645.00				
		705.00				
		765.00				
		825.00				
		885.00				
		945.00				
		1005.00				
		1065.00				
		1125.00				
		1185.00				
		1245.00				
		1305.00				
		1365.00				
		1425.00				
		1485.00				
		1545.00				
		1605.00				
		1665.00				
		1725.00				
		1785.00				
		1845.00				
		1905.00				
		1965.00				
		2025.00				
		2085.00				
		2145.00				
		2205.00				
		2265.00				
		2325.00				
		2385.00				
		2445.00				
		2505.00				
		2565.00				
		2625.00				
		2685.00				
		2745.00				
		2805.00				
		2865.00				
		2925.00				
		2985.00				
		3045.00				
		3105.00				
		3165.00				
		3225.00				
		3285.00				
		3345.00				
		3405.00				
		3465.00				
		3525.00				
		3585.00				
		3645.00				
		3705.00				
		3765.00				
		3825.00				
		3885.00				
		3945.00				
		4005.00				
		4065.00				
		4125.00				
		4185.00				
		4245.00				
		4305.00				
		4365.00				
		4425.00				
		4485.00				
		4545.00				
		4605.00				
		4665.00				
		4725.00				
		4785.00				
		4845.00				
		4905.00				
		4965.00				
		5025.00				
		5085.00				
		5145.00				
		5205.00				
		5265.00				
		5325.00				
		5385.00				
		5445.00				
		5505.00				
		5565.00				
		5625.00				
		5685.00				
		5745.00				
		5805.00				
		5865.00				
		5925.00				
		5985.00				
		6045.00				
		6105.00				
		6165.00				
		6225.00				
		6285.00				
		6345.00				
		6405.00				
		6465.00				
		6525.00				
		6585.00				
		6645.00				
		6705.00				
		6765.00				
		6825.00				
		6885.00				
		6945.00				
		7005.00				
		7065.00				
		7125.00				
		7185.00				
		7245.00				
		7305.00				
		7365.00				
		7425.00				
		7485.00				
		7545.00				
		7605.00				
		7665.00				
		7725.00				
		7785.00				
		7845.00				
		7905.00				
		7965.00				
		8025.00				
		8085.00				
		8145.00				
		8205.00				
		8265.00				
		8325.00				
		8385.00				
		8445.00				
		8505.00				
		8565.00				
		8625.00				
		8685.00				
		8745.00				
		8805.00				
		8865.00				
		8925.00				
		8985.00				
		9045.00				
		9105.00				
		9165.00				
		9225.00				
		9285.00				
		9345.00				
		9405.00				
		9465.00				
		9525.00				
		9585.00				
		9645.00				
		9705.00				
		9765.00				
		9825.00				
		9885.00				
		9945.00				
		10005.00				

At directions Contracted to Centre At Vert's Contracted to 1000

13. Diff. Ht. m. above
m. below
14. Diff. Ht. m. above
m. below
15. Diff. Ht. m. above
m. below
16. Diff. Ht. m. above
m. below

Prepared by: _____ Checked: _____

Date _____ Record of Station _____

STATION EMV PLAINS 16368

Current Occupant.....

Owners Name.....

Address.....

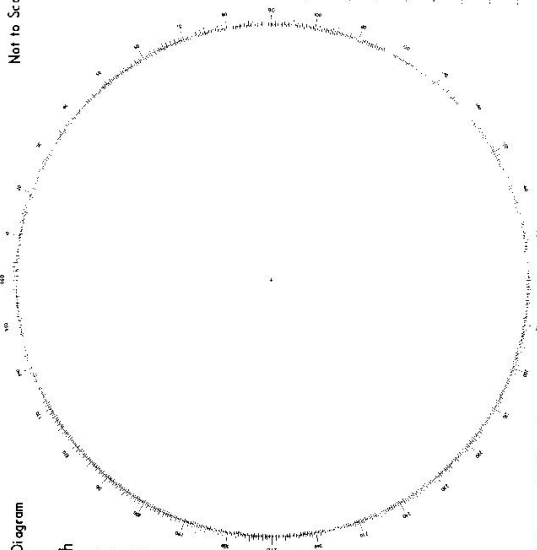
Address.....

Access.....

Not to Scale

Station Diagram

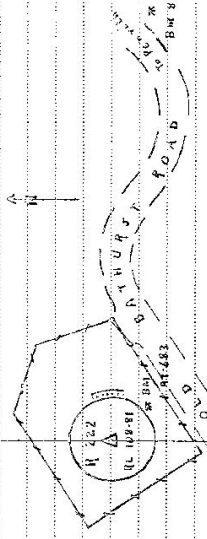
North



From EMV PLAINS RES To R 222

Remarks

Coordinates (ISS Zone SSI)
 E 100551.501 N 1054951.334
 View blocked except to NE and a gap North of Pen with
 5000 Mchmond
 See 2 distant tanks North of Pen with possible
 Highway of 400- and 612
 Drought Res



ADDITIONAL TANG. PROVIDED FOR THIS SITE
 UNIVERSAL KEY REQUIRED
 NOT TO SCALE 1:14

List of Observed Directions:-

Standpoint:		Station:	
Station	Direction	Station	Dir

TS-103

Department of Lands
 Integrative Survey of N.S.W.
 RECONNAISSANCE and MAINTENANCE REPORT

STATION TS 10368 EMO PLAINS (D)
 Co: COOK Ph: STRATHDON
 Map Sheet: PENRITH No: 06460-IV
 Inspected by: J. KWASNICA Date: 12.1.78
 Authority MWS + DB Field Book: 96819

Note: Cross out word or words which do not apply

This Trig. Station has been:-

1. Completely cleared to permit 360° vision to surrounding Trigs.
2. Cleared by lanes bearing..... from Trig. Mast
3. Trig. Mast & Vanes have been painted white & black respectively.
4. The Trig. was unpiled/not unpiled, dimensions now being:
 Description of mark: ~~Steel plate on top of steel pillar~~ should be explicit, e.g. Steel plug, Brass plug, Bolt, Concrete Pillar
 Height of mark: 1.275 m above ~~rock-concrete~~ steel platform m above G.L.
 Height of Top Vanes to Top Mark/Top pillar plate: 2.56 m Diameter of Vanes (vertical) 0.60 m.
 Height of Cairn: m. Diameter of Cairn: m.

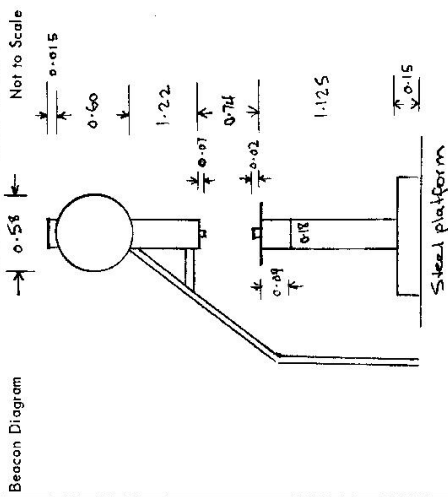
Length of Mast: m. (approximate if not unpiled)

5. A set in conc/rock has been placed/fd m. bearing°M from Trig. Mast/pillar
6. A set in conc/soil has been placed/fd m. bearing°M from Trig. Mast/pillar
7. A set in conc/soil has been placed/fd m. bearing°M from Trig. Mast/pillar
8. A set in conc/rock has been placed/fd m. bearing°M from Trig. Mast/pillar

9. Connection: to m. bearing°M
10. Connection: to m. bearing°M
11. Connection: to m. bearing°M
12. Connection: to m. bearing°M

13. Diff. Ht. is m. ^{above}/_{below}
14. Diff. Ht. is m. ^{above}/_{below}
15. Diff. Ht. is m. ^{above}/_{below}
16. Diff. Ht. is m. ^{above}/_{below}

Prepared by: [Signature] Checked: [Signature]



ON STEEL RESERVOIR.

Date	Record of Station

