

Department of Lands
Integral Survey of N.S.W.
RECONNAISSANCE and MAINTENANCE REPORT

STATION TS 10262 (MOONEE BEACH)

Co: FITZROY Ph: MOONEE
Map Sheet: MOONEE BEACH No: 9537-IV-S
Inspected by: P.R. Edwards Date: 2-12-76
Authority: Field Book:

This Trig. Station has been:- Note: Cross out word or words which do not apply

1. Completely cleared to permit 360° vision to surrounding Trigs.
2. Cleared by ~~lines-bearing~~ from Trig-Mast
3. Trig. Mast & Vanes have been painted white & black respectively.
4. The Trig. was unpiled/not unpiled, dimensions now being:

Description of mark: **Steel Plate on Conc. Pillar** should be explicit, e.g. Steel plug, Brass plug, Bolt, Concrete Pillar
 Height of mark m above rock/concrete 1.38 m above G.L.
 Height of Top Vanes to ~~Top Mast~~ Top pillar plate 1.45 m Diameter of Vanes (vertical) 0.60 m.
 Height of Cairn m. Diameter of Cairn m.

Length of Mast 1.54 m. (approximate if not unpiled)

5. A. ~~SSM~~ Copper set in conc/~~rock~~ has been placed/~~fd~~ 4.90 m. bearing 77 °M from ~~Trig-Mast~~ pillar
6. A. ~~Spike~~ set in conc/~~soil~~ has been placed/~~fd~~ 5.32 m. bearing 166 °M from ~~Trig-Mast~~ pillar
7. A. set in conc./soil has been placed/~~fd~~ m. bearing °M from Trig. Mast/pillar
8. A. set in conc./rock has been placed/~~fd~~ m. bearing °M from Trig. Mast/pillar

9. Connection: Copper SSM to Spike : 7.232 m. bearing... 209 °M

10. Connection: to m. bearing °M

11. Connection: to m. bearing °M

12. Connection: to m. bearing °M

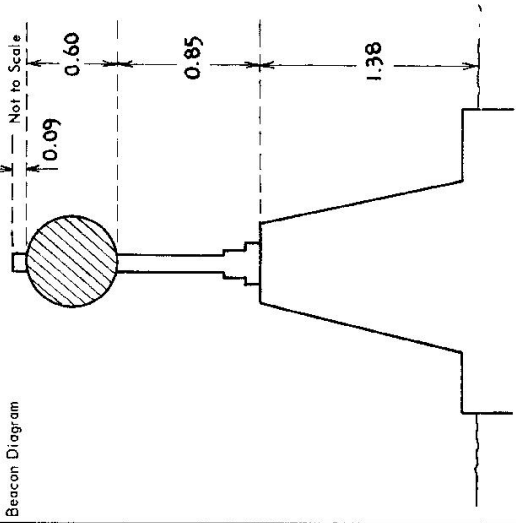
13. Diff. Ht. SSM 23335 is 1.545 m. ~~above~~ below Pillar Plate

14. Diff. Ht. Copper Spike is 1.490 m. ~~above~~ below Pillar Plate

15. Diff. Ht. is m. above

16. Diff. Ht. is m. above

Prepared by: P. R. Edwards Checked: L. J. Griffin



Date	Record of Station
Oct '76	Pillar erected

STATION TS10262 (MOONEE BEACH)

Current Occupant.....

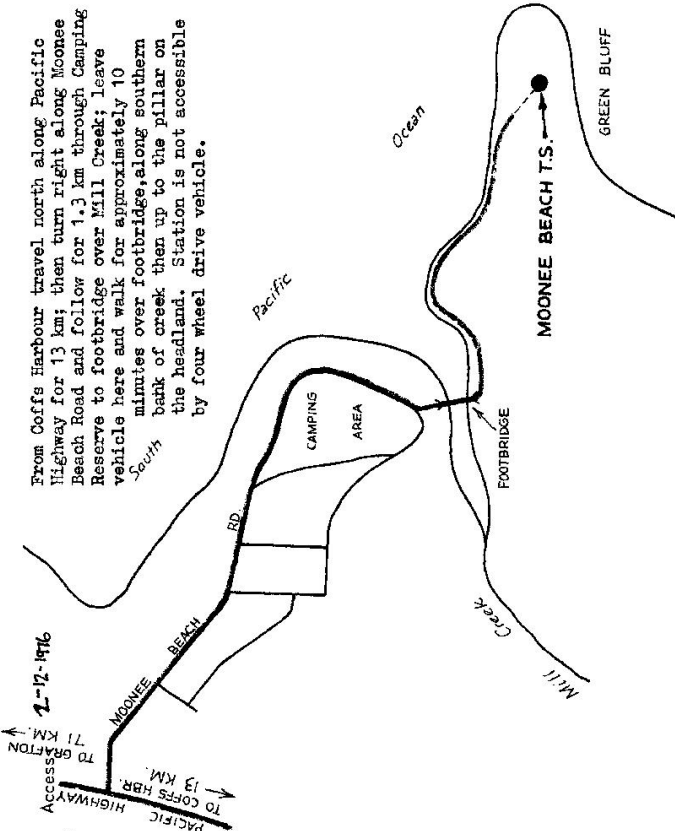
Address.....

Owners Name... **Crown Land**...

Address... **Part V.R.14**

Note: 24.12.1861

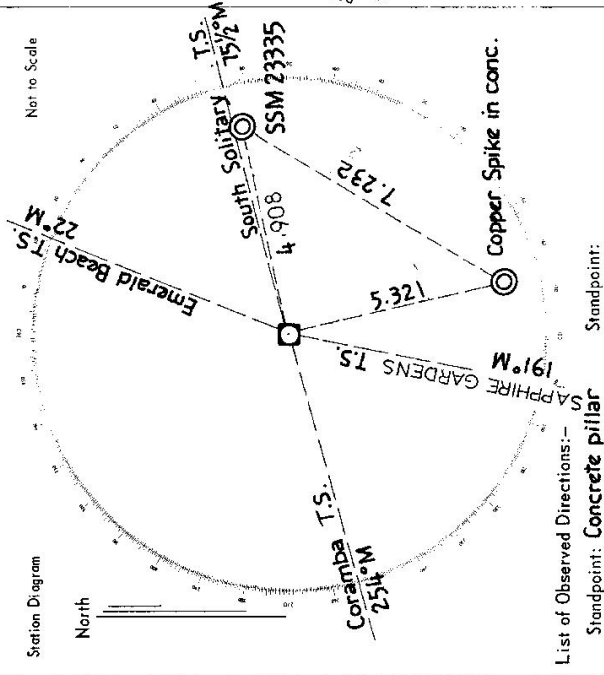
From Coffe Harbour travel north along Pacific Highway for 13 km; then turn right along Moonee Beach Road and follow for 1.3 km through Camping Reserve to footbridge over Mill Creek; Leave vehicle here and walk for approximately 10 minutes over footbridge, along southern bank of creek then up to the pillar on the headland. Station is not accessible by four wheel drive vehicle.



D. West. Government Printer, New South Wales - 1976

Station Diagram Not to Scale

North



List of Observed Directions:-
Standpoint: **Concrete pillar**

Standpoint:		Station		Direction	
Station	Direction	Station	Direction	Station	Direction